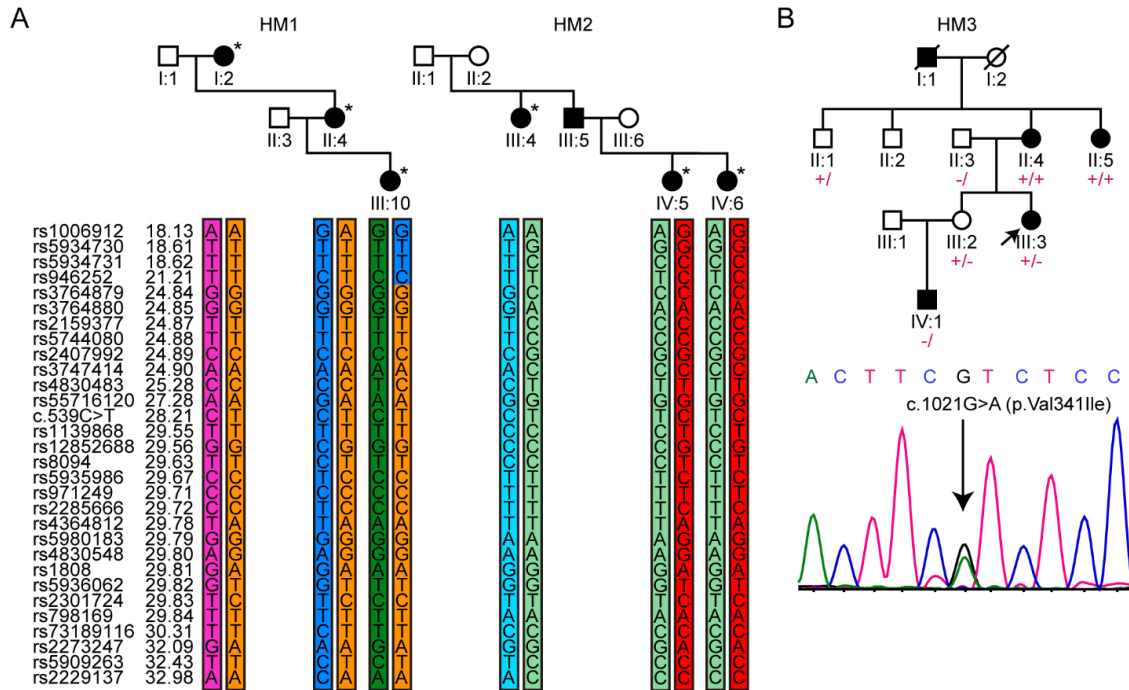
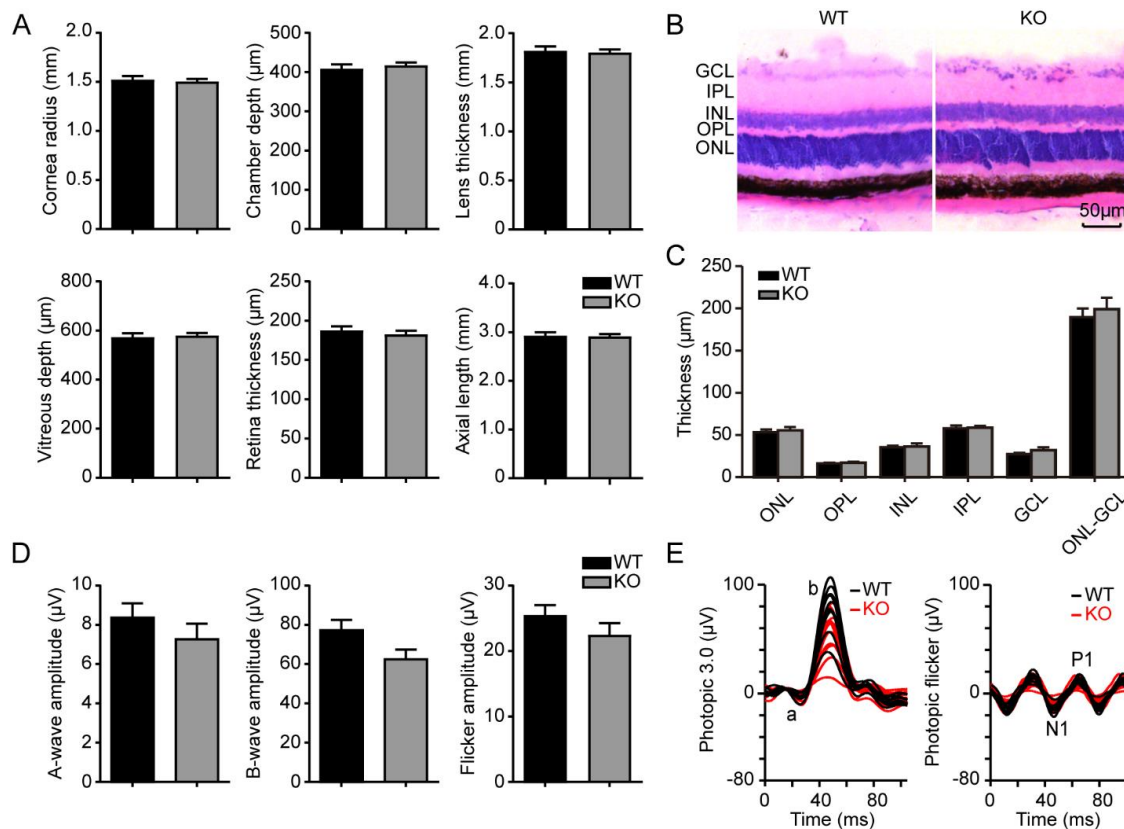


Online Supplemental material

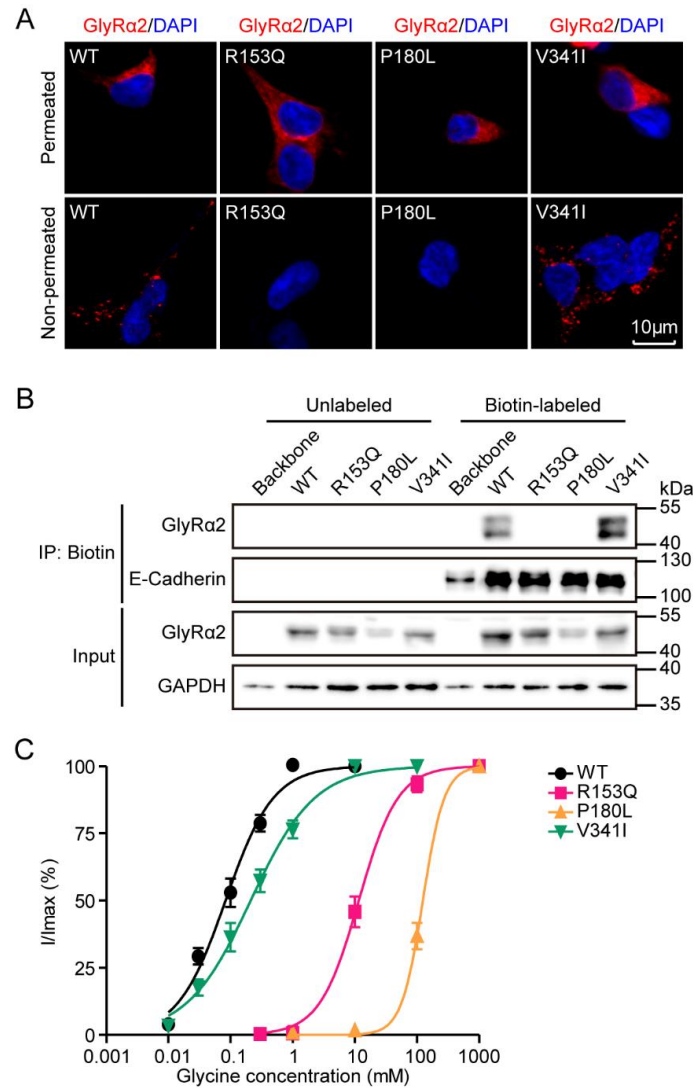
Supplemental Figures and legends

**Supplemental Figure 1.** Haplotype of HM1 and HM2 families and *GLRA2* variants detected in HM3

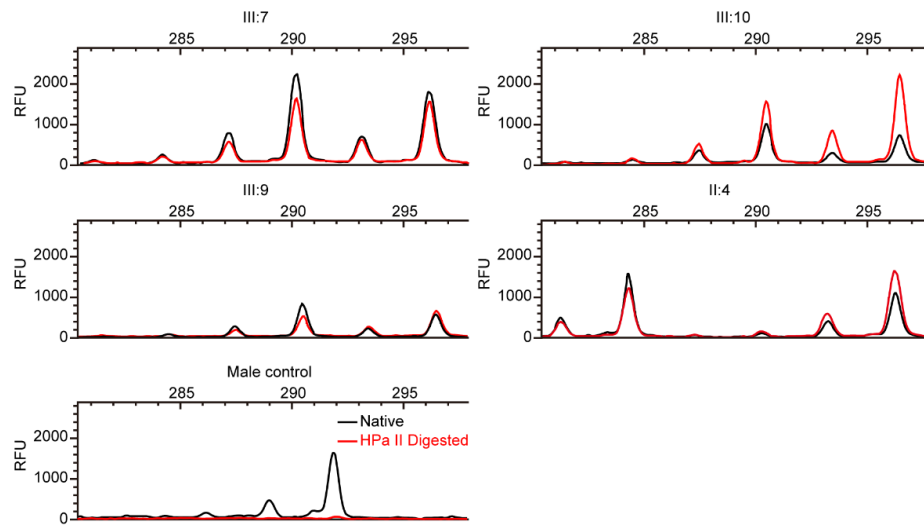
family. (A) The haplotype of HM1 and HM2 families shows no founder effect. (B) Co-segregation status of variant c.1021G>A (p.Val341Ile) in HM3 family. □' and '○' symbols present asymptomatic male and female subjects, respectively; '■' and '●' characters stand for male and female patients, respectively. Samples selected for ES were marked with '*'. '+' stands for wild-type allele and '-' refers to c.1021G>A variant in *GLRA2* gene.



Supplemental Figure 2. Assessment of ocular parameters, retinal stratification, and photopic-electroretinography response of *Glra2* knockout mice. (A) Normalized ocular parameters measured using optical coherence tomography. (B) Retinal stratification observed using hematoxylin and eosin staining. (C) Statistical results of (B). (D, E) Light-adapted electroretinography responses of *Glra2* knockout and wild-type mice. *Glra2* knockout mice show a decreased amplitude of photopic 3.0 a and b waves and flicker response, but the differences have no statistical significance. Data are represented as mean±SEM.



Supplemental Figure 3. Functional assessment of HM-related variants. (A) Immunofluorescent staining of wild type and mutated plasmids overexpressed in HEK293 cells with anti-GlyRa2. (B) Isolation of biotinylated membrane protein of wild-type and mutated GlyRa2. (C) Electrophysiological characteristics of wild-type and mutated GlyRa2.



Supplemental Figure 4. X-inactivation proportion of asymptomatic subject III:9 in HM1 family. The results show no skewed inactivation of X chromosome between subject III:9 and other female patients.

Supplemental tables

Supplemental Table 1. Primers were used in this study.

Primer Name	Primer sequence 5'-3'	Product size	Note
<i>GLRA2</i> -E1F	CCAACCTCCCTTGCATGGTG	631bp	Amplify <i>GLRA2</i> exon 1
<i>GLRA2</i> -E1R	CGTTGGCTGTGAAAATGTGTG		
<i>GLRA2</i> -E2F	GTGACGCGACTCAGGATTTA	633bp	Amplify <i>GLRA2</i> exon 2
<i>GLRA2</i> -E2R	TCAGCCACACTCCCCTTAC		
<i>GLRA2</i> -E3F	ACTCTTCAGGGTAAGTTGCCA	553bp	Amplify <i>GLRA2</i> exon 3
<i>GLRA2</i> -E3R	GAGGCGAGCAAAGTTGAAA		
<i>GLRA2</i> -E5F	AAAAGCACTGCCCTGAGTTG	680bp	Amplify <i>GLRA2</i> exon 5
<i>GLRA2</i> -E5R	CCCTTCCTGCCAGAATTCCT		
<i>GLRA2</i> -E5S	GGGGTTGGTCAGTATATAGGGA	—	<i>GLRA2</i> exon 5 sequencing primer
<i>GLRA2</i> -E4F	ACTCGGACACCAAAGCTGTA	488bp	Amplify <i>GLRA2</i> exon 4
<i>GLRA2</i> -E4R	GGGACTTCTGACACTCTCCA		
<i>GLRA2</i> -E6F	TGGCTCCAATGACACAGAGT	458bp	Amplify <i>GLRA2</i> exon 6
<i>GLRA2</i> -E6R	TTTGAGCCAAATCAGGTCCG		
<i>GLRA2</i> -E7F	CGTAGGGTGAACATTTTGTGC	528bp	Amplify <i>GLRA2</i> exon 7
<i>GLRA2</i> -E7R	TTCCCATGTTCCCAGATCC		
<i>GLRA2</i> -E8F	GCGTGTGACTTTTCAGTGCTC	691bp	Amplify <i>GLRA2</i> exon 8
<i>GLRA2</i> -E8R	GGAGCCCAGTTACTTCCGAA		
<i>GLRA2</i> -E9F	CCTCCCACACCACCAGTTAA	721bp	Amplify <i>GLRA2</i> exon 9
<i>GLRA2</i> -E9R	TGACCCCGCATATCATGTCT		
<i>mGla2</i> -E2F	AGCAAGTGAGAAAATAAGCATGT	279bp	Amplify <i>Gla2</i> knockout allele
<i>mGla2</i> -E2R	TGCAAGCAAACCTATCATTGG		
<i>mGla2</i> -E2Fb	ACTTGGTTGACATTGCTCAGG	440bp	Amplify <i>Gla2</i> wild type allele
<i>mGla2</i> -E2Rb	CAGGGAGGCTGAAATTGTGT		
<i>mSRY</i> -F	GTGACACTTTAGCCCTCCGA	334bp	Amplify sex determine gene
<i>mSRY</i> -R	TAGTGTTACGCCCTACAGCC		
<i>ARF</i>	HEX-GCTGTGAAGGTTGCTGTTCTCAT	288bp	ChrX-inactivation detection
<i>ARR</i>	TCCAGAATCTGTTCCAGAGCGTGC		

Supplemental Table 2. Genome-wide multi-point parameter linkage analysis results of HM1 family.

Cytoband	Markers	LOD_Score	Size
	rs7066674	-0.07	
	rs4830891	2.88	
	...		
	rs4825340	2.88	
	...		
Xp22.2-p11.4	rs6633421	2.88	24.7Mb
	rs4332301	1.89	
	...		
	rs5971622	0.88	
	...		
	rs1801686	0.31	
	rs6609813	-2.07	

Supplemental Table 3. *Gra2* knockout mice ocular biometry measured by OCT.

Measurements	Wild type (mm, mean \pm SEM)	Knockout (mm, mean \pm SEM)	n, p-value
Cornea thickness	0.1259 \pm 0.0037	0.1167 \pm 0.0037	p=0.049*, n=8pairs
Cornea radius	1.524 \pm 0.0370	1.504 \pm 0.0251	p=0.6857, n=8pairs
Chamber depth	0.4086 \pm 0.0107	0.4174 \pm 0.0064	p=0.5422, n=8pairs
Lens thickness	1.821 \pm 0.0440	1.804 \pm 0.0296	p=0.7580, n=8pairs
Vitreous depth	0.5731 \pm 0.0155	0.5793 \pm 0.0102	p=0.7618, n=8pairs
Retina thickness	0.1876 \pm 0.0051	0.1825 \pm 0.0046	p=0.4658, n=8pairs
Axial length	2.929 \pm 0.0721	2.913 \pm 0.04755	p=0.8609, n=8pairs

Supplemental Table 4. Photopic 3.0 ERG results of *Gira2* knockout mice.

Measurements	Wild-type (μV , mean \pm SEM)	Knockout (μV , mean \pm SEM)	n, p-value
Photopic 3.0 a wave	8.386 \pm 0.7088	7.284 \pm 0.7756	p=0.291, n=11pairs
Photopic 3.0 b wave	77.45 \pm 5.081	62.61 \pm 4.763	p=0.093, n=11pairs
Photopic 3.0 flicker	25.51 \pm 1.516	22.48 \pm 1.796	p=0.296, n=11pairs

Supplemental Table 5. Nonsynonymous variants on the *GLRA2* gene were reported previously and in the current study.

No.	Patient_ID	Sex	Variation	Inheritance	Phenotype
1	12724	F	c.16G>C[1]	de novo	Autism.
2	11842	M	c.407A>G[1, 2]	de novo	Autism.
3	Patient 2	M	c.458G>A[2]	de novo	Non-syndromic autism, severe language delay with functional language, mild intellectual disability, generalized tonic-clonic seizures; But his autistic elder sister does not carry the variant.
4	AGP: 6323_3	M	E8-9del[2, 3]	Maternal	Autism, average IQ, language delay, bilateral HM, normal physical exam, no epilepsy; His mother and maternal grandfather are also myopic.
5	S00125- ASD-GT	F	c.1049G>T[4, 5]	Maternal	Autism.
6	M21227	M	c.458G>A ^a	NA	HM.
7	HM1-II:4 HM2-III:5	F	c.539C>T ^a	Familial	Among these two families, 18 patients with HM, two heterozygotes with normal phenotype.
8	HM3-III:3	F	c.1021G>A ^a	Familial	Two heterozygotes with HM, two heterozygotes with normal phenotype, and two patients without the variant.

a, this study; NA, not available

Supplemental references

1. Iossifov I, O’Roak BJ, Sanders SJ, Ronemus M, Krumm N, Levy D, Stessman HA, Witherspoon KT, Vives L, Patterson KE, Smith JD, Paepfer B, Nickerson DA, Dea J, Dong S, Gonzalez LE, Mandell JD, Mane SM, Murtha MT, Sullivan CA, Walker MF, Waqar Z, Wei L, Willsey AJ, Yamrom B, Lee YH, Grabowska E, Dalkic E, Wang Z, Marks S, Andrews P, Leotta A, Kendall J, Hakker I, Rosenbaum J, Ma B, Rodgers L, Troge J, Narzisi G, Yoon S, Schatz MC, Ye K, McCombie WR, Shendure J, Eichler EE, State MW, Wigler M. The contribution of de novo coding mutations to autism spectrum disorder. *Nature*. 2014;515(7526):216-21.
2. Pilorge M, Fassier C, Le Corronc H, Potey A, Bai J, De Gois S, Delaby E, Assouline B, Guinchat V, Devillard F, Delorme R, Nygren G, Rastam M, Meier JC, Otani S, Cheval H, James VM, Topf M, Dear TN, Gillberg C, Leboyer M, Giros B, Gautron S, Hazan J, Harvey RJ, Legendre P, Betancur C. Genetic and functional analyses demonstrate a role for abnormal glycinergic signaling in autism. *Mol Psychiatry*. 2016;21(7):936-45.
3. Pinto D, Pagnamenta AT, Klei L, Anney R, Merico D, Regan R, Conroy J, Magalhaes TR, Correia C, Abrahams BS, Almeida J, Bacchelli E, Bader GD, Bailey AJ, Baird G, Battaglia A, Berney T, Bolshakova N, Bolte S, Bolton PF, Bourgeron T, Brennan S, Brian J, Bryson SE, Carson AR, Casallo G, Casey J, Chung BH, Cochrane L, Corsello C, Crawford EL, Crossett A, Cytrynbaum C, Dawson G, de Jonge M, Delorme R, Drmic I, Duketis E, Duque F, Estes A, Farrar P, Fernandez BA, Folstein SE, Fombonne E, Freitag CM, Gilbert J, Gillberg C, Glessner JT, Goldberg J, Green A, Green J, Guter SJ, Hakonarson H, Heron EA, Hill M, Holt R, Howe JL, Hughes G, Hus V, Iglizzi R, Kim C, Klauck SM, Kolevzon A, Korvatska O, Kustanovich V, Lajonchere CM, Lamb JA, Laskawiec M, Leboyer M, Le Couteur A, Leventhal BL, Lionel AC, Liu XQ, Lord C, Lotspeich L, Lund SC, Maestrini E, Mahoney W, Mantoulan C, Marshall CR, McConachie H, McDougle CJ, McGrath J, McMahon WM, Merikangas A, Migita O, Minshew NJ, Mirza GK, Munson J, Nelson SF, Noakes C, Noor A, Nygren G, Oliveira G, Papanikolaou K, Parr JR, Parrini B, Paton T, Pickles A, Pilorge M, Piven J, Ponting CP, Posey DJ, Poustka A, Poustka F, Prasad A, Ragoussis J, Renshaw K, Rickaby J, Roberts W, Roeder K, Roge B, Rutter ML, Bierut LJ, Rice JP, Salt J, Sansom K, Sato D, Segurado R, Sequeira AF, Senman L, Shah N, Sheffield VC, Soorya L, Sousa I, Stein O, Sykes N, Stoppioni V, Strawbridge C, Tancredi R, Tansey K, Thiruvahindrapduram B, Thompson AP, Thomson S, Tryfon A, Tsiantis J, Van Engeland H, Vincent JB, Volkmar F, Wallace S, Wang K, Wang Z, Wassink TH, Webber C, Weksberg R, Wing K, Wittmeyer K, Wood S, Wu J, Yaspan BL, Zurawiecki D, Zwaigenbaum L, Buxbaum JD, Cantor RM, Cook EH, Coon H, Cuccaro ML, Devlin B, Ennis S, Gallagher L, Geschwind DH, Gill M, Haines JL, Hallmayer J, Miller J, Monaco AP, Nurnberger JI, Jr., Paterson AD, Pericak-Vance MA, Schellenberg GD, Szatmari P, Vicente AM, Vieland VJ, Wijsman EM, Scherer SW, Sutcliffe JS, Betancur C. Functional impact of global rare copy number variation in autism spectrum disorders. *Nature*. 2010;466(7304):368-72.
4. Piton A, Gauthier J, Hamdan FF, Lafreniere RG, Yang Y, Henrion E, Laurent S, Noreau A, Thibodeau P, Karemera L, Spiegelman D, Kuku F, Duguay J, Destroismaisons L, Jolivet P, Cote M, Lachapelle K, Diallo O, Raymond A, Marineau C, Champagne N, Xiong L, Gaspar C, Riviere JB, Tarabeux J, Cossette P, Krebs MO, Rapoport JL, Addington A, Delisi LE, Mottron L, Joobor R, Fombonne E, Drapeau P, Rouleau GA. Systematic resequencing of X-chromosome synaptic genes in autism spectrum disorder and schizophrenia. *Mol Psychiatry*. 2011;16(8):867-80.

5. Zhang Y, Ho TNT, Harvey RJ, Lynch JW, Keramidas A. Structure-function analysis of the GlyR alpha2 subunit autism mutation p.R323L reveals a gain-of-function. *Front Mol Neurosci.* 2017;10:158.