

## Supplementary Data

**Table 1: Covariance parameters**

SCA genotype	Intercept – Expanded allele	Intercept – Shorter allele	Expanded allele – Shorter allele
SCA1	-1.890 E <sup>-4</sup>	-9.280 E <sup>-4</sup>	6.360 E <sup>-7</sup>
SCA2	-8.250 E <sup>-4</sup>		
SCA3	-5.020 E <sup>-4</sup>		
SCA6	-2.163 E <sup>-3</sup>	-1.837 E <sup>-3</sup>	2.331 E <sup>-5</sup>

**Table 2A: SCA1: Expected age at onset (median [90%CR]) from birth and for different current age according to the genotype**

CAG Repeat	At birth				Current Age				
	20	25	30	35	40	45	50		
26 40	48.9 [36.5 - 65.5]	48.9 [36.5 - 65.5]	48.9 [36.6 - 65.5]	48.9 [36.7 - 65.5]	49.2 [38 - 65.6]	50.3 [41.4 - 66.2]	52.6 [45.8 - 67.6]	55.9 [50.5 - 69.8]	
26 42	44.4 [33.2 - 59.3]	44.4 [33.2 - 59.3]	44.4 [33.2 - 59.3]	44.5 [33.8 - 59.4]	45.3 [36.5 - 59.8]	47.3 [40.7 - 61]	50.4 [45.5 - 63.1]	54.4 [50.4 - 66]	
26 44	40.2 [30.1 - 53.8]	40.2 [30.1 - 53.8]	40.3 [30.3 - 53.8]	40.7 [32 - 54]	42.2 [35.8 - 54.9]	45.2 [40.5 - 56.8]	49 [45.3 - 59.6]	53.4 [50.3 - 63.1]	
26 46	36.5 [27.3 - 48.8]	36.5 [27.3 - 48.8]	36.6 [28 - 48.9]	37.6 [31 - 49.4]	40.1 [35.5 - 50.9]	43.8 [40.3 - 53.5]	48.1 [45.2 - 56.9]	52.7 [50.2 - 60.9]	
26 48	33.1 [24.8 - 44.3]	33.1 [24.9 - 44.3]	33.5 [26.5 - 44.5]	35.3 [30.5 - 45.5]	38.7 [35.3 - 47.8]	42.9 [40.2 - 51]	47.5 [45.2 - 54.9]	52.2 [50.2 - 59.3]	
26 50	30 [22.5 - 40.2]	30.1 [22.8 - 40.2]	31.1 [25.8 - 40.7]	33.8 [30.3 - 42.4]	37.8 [35.2 - 45.4]	42.3 [40.2 - 49.2]	47.1 [45.2 - 53.4]	51.9 [50.1 - 58]	
26 52	27.2 [20.4 - 36.4]	27.5 [21.5 - 36.6]	29.3 [25.4 - 37.6]	32.8 [30.2 - 40]	37.2 [35.2 - 43.6]	41.9 [40.1 - 47.8]	46.7 [45.1 - 52.3]	51.6 [50.1 - 57]	
26 54	24.7 [18.5 - 33.1]	25.4 [20.7 - 33.4]	28.1 [25.3 - 35.1]	32.2 [30.2 - 38.2]	36.8 [35.1 - 42.2]	41.6 [40.1 - 46.7]	46.5 [45.1 - 51.4]	51.5 [50.1 - 56.2]	
26 56	22.4 [16.8 - 30]	23.8 [20.4 - 30.8]	27.3 [25.2 - 33.2]	31.7 [30.1 - 36.9]	36.5 [35.1 - 41.2]	41.4 [40.1 - 45.8]	46.3 [45.1 - 50.7]	51.3 [50.1 - 55.6]	
26 58	20.3 [15.2 - 27.2]	22.7 [20.2 - 28.6]	26.8 [25.1 - 31.7]	31.4 [30.1 - 35.8]	36.3 [35.1 - 40.4]	41.2 [40.1 - 45.2]	46.2 [45.1 - 50.1]	51.2 [50.1 - 55.1]	
26 60	18.4 [13.8 - 24.7]	22 [20.2 - 27]	26.4 [25.1 - 30.6]	31.2 [30.1 - 35]	36.1 [35.1 - 39.8]	41.1 [40.1 - 44.6]	46.1 [45.1 - 49.6]	51.1 [50.1 - 54.6]	
26 62	16.7 [12.5 - 22.4]	21.5 [20.1 - 25.7]	26.2 [25.1 - 29.8]	31 [30.1 - 34.4]	36 [35.1 - 39.3]	41 [40.1 - 44.2]	46 [45.1 - 49.2]	51 [50.1 - 54.3]	
28 40	50.2 [37.6 - 67.1]	50.2 [37.6 - 67.1]	50.2 [37.6 - 67.1]	50.2 [37.7 - 67.1]	50.4 [38.7 - 67.2]	51.3 [41.6 - 67.7]	53.3 [45.9 - 68.8]	56.4 [50.6 - 70.8]	
28 42	45.6 [34.1 - 60.8]	45.6 [34.1 - 60.8]	45.6 [34.1 - 60.8]	45.6 [34.6 - 60.9]	46.2 [36.8 - 61.2]	48 [40.9 - 62.2]	50.9 [45.5 - 64]	54.7 [50.4 - 66.7]	
28 44	41.3 [31 - 55.2]	41.3 [31 - 55.2]	41.3 [31.1 - 55.2]	41.6 [32.4 - 55.3]	42.9 [35.9 - 56]	45.6 [40.5 - 57.7]	49.3 [45.4 - 60.3]	53.6 [50.3 - 63.6]	
28 46	37.5 [28.1 - 50]	37.5 [28.1 - 50]	37.6 [28.5 - 50.1]	38.3 [31.2 - 50.5]	40.6 [35.5 - 51.8]	44.1 [40.3 - 54.2]	48.3 [45.3 - 57.5]	52.8 [50.2 - 61.3]	
28 48	34 [25.5 - 45.4]	34 [25.5 - 45.4]	34.3 [26.8 - 45.5]	35.9 [30.6 - 46.4]	39 [35.3 - 48.5]	43.1 [40.2 - 51.5]	47.6 [45.2 - 55.3]	52.3 [50.2 - 59.6]	
28 50	30.8 [23.1 - 41.2]	30.9 [23.4 - 41.2]	31.6 [25.9 - 41.6]	34.1 [30.4 - 43.1]	38 [35.2 - 45.9]	42.4 [40.2 - 49.5]	47.1 [45.2 - 53.7]	52 [50.1 - 58.2]	
28 52	28 [21 - 37.4]	28.2 [21.8 - 37.4]	29.7 [25.5 - 38.3]	33 [30.3 - 40.6]	37.3 [35.2 - 44]	42 [40.1 - 48]	46.8 [45.1 - 52.5]	51.7 [50.1 - 57.2]	
28 54	25.4 [19 - 33.9]	25.9 [20.9 - 34.2]	28.3 [25.3 - 35.6]	32.3 [30.2 - 38.6]	36.9 [35.1 - 42.5]	41.7 [40.1 - 46.9]	46.5 [45.1 - 51.5]	51.5 [50.1 - 56.3]	
28 56	23 [17.2 - 30.8]	24.1 [20.5 - 31.4]	27.4 [25.2 - 33.6]	31.8 [30.1 - 37.1]	36.5 [35.1 - 41.4]	41.4 [40.1 - 46]	46.4 [45.1 - 50.8]	51.3 [50.1 - 55.7]	
28 58	20.9 [15.6 - 27.9]	22.9 [20.3 - 29.1]	26.9 [25.1 - 32]	31.5 [30.1 - 36]	36.3 [35.1 - 40.5]	41.2 [40.1 - 45.3]	46.2 [45.1 - 50.2]	51.2 [50.1 - 55.1]	
28 60	18.9 [14.2 - 25.3]	22.1 [20.2 - 27.4]	26.5 [25.1 - 30.9]	31.2 [30.1 - 35.2]	36.1 [35.1 - 39.9]	41.1 [40.1 - 44.7]	46.1 [45.1 - 49.7]	51.1 [50.1 - 54.7]	
28 62	17.2 [12.8 - 23]	21.6 [20.1 - 26]	26.2 [25.1 - 30]	31.1 [30.1 - 34.5]	36 [35.1 - 39.3]	41 [40.1 - 44.3]	46 [45.1 - 49.3]	51 [50.1 - 54.3]	
30 40	51.6 [38.6 - 68.8]	51.6 [38.6 - 68.8]	51.6 [38.6 - 68.8]	51.6 [38.7 - 68.8]	51.7 [39.4 - 68.9]	52.4 [42 - 69.3]	54.1 [46 - 70.3]	57 [50.6 - 72]	
30 42	46.8 [35.1 - 62.4]	46.8 [35.1 - 62.4]	46.8 [35.1 - 62.4]	46.8 [35.4 - 62.4]	47.3 [37.2 - 62.7]	48.8 [41 - 63.5]	51.4 [45.6 - 65.2]	55.1 [50.4 - 67.7]	
30 44	42.4 [31.8 - 56.6]	42.4 [31.8 - 56.6]	42.4 [31.9 - 56.6]	42.7 [32.9 - 56.7]	43.7 [36.1 - 57.3]	46.1 [40.6 - 58.8]	49.7 [45.4 - 61.2]	53.8 [50.3 - 64.3]	
30 46	38.5 [28.9 - 51.3]	38.5 [28.9 - 51.3]	38.6 [29.2 - 51.4]	39.2 [31.4 - 51.7]	41.1 [35.6 - 52.8]	44.4 [40.4 - 55]	48.5 [45.3 - 58.1]	53 [50.2 - 61.8]	
30 48	34.9 [26.2 - 46.6]	34.9 [26.2 - 46.6]	35.1 [27.2 - 46.7]	36.4 [30.7 - 47.4]	39.4 [35.4 - 49.2]	43.3 [40.3 - 52.2]	47.8 [45.2 - 55.8]	52.4 [50.2 - 60]	
30 50	31.7 [23.7 - 42.2]	31.7 [23.9 - 42.3]	32.3 [26.1 - 42.6]	34.5 [30.4 - 43.9]	38.2 [35.3 - 46.5]	42.6 [40.2 - 50]	47.2 [45.2 - 54.1]	52 [50.2 - 58.5]	
30 52	28.7 [21.5 - 38.3]	28.9 [22.1 - 38.4]	30.1 [25.6 - 39.1]	33.3 [30.3 - 41.2]	37.5 [35.2 - 44.4]	42.1 [40.2 - 48.4]	46.9 [45.1 - 52.8]	51.8 [50.1 - 57.4]	
30 54	26.1 [19.5 - 34.8]	26.4 [21.1 - 35]	28.6 [25.3 - 36.3]	32.5 [30.2 - 39.1]	37 [35.2 - 42.8]	41.7 [40.1 - 47.1]	46.6 [45.1 - 51.7]	51.5 [50.1 - 56.5]	
30 56	23.6 [17.7 - 31.6]	24.6 [20.5 - 32.1]	27.6 [25.2 - 34.1]	31.9 [30.1 - 37.5]	36.6 [35.1 - 41.6]	41.5 [40.1 - 46.2]	46.4 [45.1 - 51]	51.4 [50.1 - 55.8]	

30 58	21.4 [16.1 - 28.7]	23.2 [20.3 - 29.7]	27 [25.2 - 32.4]	31.6 [30.1 - 36.3]	36.4 [35.1 - 40.7]	41.3 [40.1 - 45.5]	46.2 [45.1 - 50.3]	51.2 [50.1 - 55.3]
30 60	19.5 [14.5 - 26]	22.3 [20.2 - 27.8]	26.6 [25.1 - 31.1]	31.3 [30.1 - 35.4]	36.2 [35.1 - 40]	41.1 [40.1 - 44.9]	46.1 [45.1 - 49.8]	51.1 [50.1 - 54.8]
30 62	17.6 [13.2 - 23.6]	21.7 [20.1 - 26.3]	26.3 [25.1 - 30.2]	31.1 [30.1 - 34.7]	36 [35.1 - 39.5]	41 [40.1 - 44.4]	46 [45.1 - 49.4]	51 [50.1 - 54.4]
32 40	53 [39.7 - 70.7]	53 [39.7 - 70.7]	53 [39.7 - 70.7]	53 [39.7 - 70.7]	53.1 [40.2 - 70.8]	53.6 [42.4 - 71.1]	55.1 [46.2 - 71.9]	57.7 [50.7 - 73.4]
32 42	48 [36 - 64.1]	48 [36 - 64.1]	48 [36 - 64.1]	48.1 [36.2 - 64.1]	48.4 [37.7 - 64.3]	49.6 [41.2 - 65]	52.1 [45.7 - 66.5]	55.5 [50.5 - 68.8]
32 44	43.6 [32.7 - 58.2]	43.6 [32.7 - 58.2]	43.6 [32.7 - 58.2]	43.7 [33.5 - 58.2]	44.6 [36.3 - 58.7]	46.8 [40.7 - 60]	50.1 [45.4 - 62.2]	54.1 [50.3 - 65.2]
32 46	39.5 [29.6 - 52.7]	39.5 [29.6 - 52.7]	39.6 [29.8 - 52.8]	40 [31.7 - 53]	41.7 [35.7 - 54]	44.8 [40.4 - 56]	48.8 [45.3 - 58.9]	53.2 [50.2 - 62.5]
32 48	35.9 [26.9 - 47.8]	35.9 [26.9 - 47.8]	36 [27.6 - 47.9]	37.1 [30.9 - 48.5]	39.8 [35.4 - 50.2]	43.6 [40.3 - 52.9]	47.9 [45.2 - 56.4]	52.6 [50.2 - 60.4]
32 50	32.5 [24.4 - 43.4]	32.5 [24.5 - 43.4]	33 [26.3 - 43.7]	35 [30.5 - 44.8]	38.5 [35.3 - 47.2]	42.8 [40.2 - 50.6]	47.4 [45.2 - 54.5]	52.1 [50.2 - 58.9]
32 52	29.5 [22.1 - 39.4]	29.6 [22.5 - 39.4]	30.7 [25.7 - 40]	33.6 [30.3 - 41.9]	37.6 [35.2 - 44.9]	42.2 [40.2 - 48.8]	47 [45.1 - 53.1]	51.8 [50.1 - 57.7]
32 54	26.8 [20 - 35.7]	27.1 [21.3 - 35.9]	29 [25.4 - 37]	32.7 [30.2 - 39.6]	37.1 [35.2 - 43.2]	41.8 [40.1 - 47.5]	46.7 [45.1 - 52]	51.6 [50.1 - 56.8]
32 56	24.3 [18.2 - 32.4]	25 [20.6 - 32.8]	27.9 [25.2 - 34.7]	32.1 [30.2 - 37.9]	36.7 [35.1 - 42]	41.5 [40.1 - 46.5]	46.5 [45.1 - 51.2]	51.4 [50.1 - 56]
32 58	22 [16.5 - 29.4]	23.5 [20.4 - 30.3]	27.1 [25.2 - 32.8]	31.6 [30.1 - 36.6]	36.4 [35.1 - 41]	41.3 [40.1 - 45.7]	46.3 [45.1 - 50.5]	51.3 [50.1 - 55.4]
32 60	20 [14.9 - 26.7]	22.5 [20.2 - 28.3]	26.7 [25.1 - 31.5]	31.4 [30.1 - 35.6]	36.2 [35.1 - 40.2]	41.2 [40.1 - 45]	46.2 [45.1 - 50]	51.1 [50.1 - 54.9]
32 62	18.1 [13.5 - 24.3]	21.9 [20.2 - 26.7]	26.4 [25.1 - 30.4]	31.2 [30.1 - 34.9]	36.1 [35.1 - 39.6]	41.1 [40.1 - 44.5]	46 [45.1 - 49.5]	51 [50.1 - 54.5]
34 40	54.4 [40.7 - 72.7]	54.4 [40.7 - 72.7]	54.4 [40.7 - 72.7]	54.4 [40.7 - 72.7]	54.5 [41.1 - 72.8]	54.9 [42.9 - 73]	56.1 [46.4 - 73.7]	58.5 [50.8 - 75.1]
34 42	49.3 [36.9 - 65.9]	49.3 [36.9 - 65.9]	49.3 [36.9 - 65.9]	49.4 [37 - 66]	49.6 [38.2 - 66.1]	50.6 [41.4 - 66.6]	52.8 [45.8 - 67.9]	56 [50.5 - 70]
34 44	44.7 [33.5 - 59.8]	44.7 [33.5 - 59.8]	44.8 [33.5 - 59.8]	44.9 [34.1 - 59.9]	45.6 [36.6 - 60.2]	47.5 [40.8 - 61.3]	50.6 [45.5 - 63.3]	54.5 [50.4 - 66.2]
34 46	40.6 [30.4 - 54.2]	40.6 [30.4 - 54.2]	40.6 [30.5 - 54.3]	41 [32.1 - 54.4]	42.4 [35.8 - 55.3]	45.3 [40.5 - 57.1]	49.1 [45.3 - 59.8]	53.5 [50.3 - 63.3]
34 48	36.8 [27.6 - 49.2]	36.8 [27.6 - 49.2]	36.9 [28.1 - 49.3]	37.8 [31 - 49.8]	40.3 [35.5 - 51.2]	43.9 [40.3 - 53.7]	48.2 [45.2 - 57.1]	52.8 [50.2 - 61]
34 50	33.4 [25 - 44.6]	33.4 [25.1 - 44.6]	33.8 [26.6 - 44.8]	35.5 [30.6 - 45.8]	38.8 [35.3 - 48]	43 [40.2 - 51.2]	47.5 [45.2 - 55.1]	52.3 [50.2 - 59.4]
34 52	30.3 [22.7 - 40.5]	30.4 [23 - 40.5]	31.2 [25.8 - 41]	33.9 [30.3 - 42.7]	37.9 [35.2 - 45.6]	42.4 [40.2 - 49.3]	47.1 [45.2 - 53.6]	51.9 [50.1 - 58.1]
34 54	27.5 [20.5 - 36.8]	27.7 [21.5 - 36.9]	29.4 [25.4 - 37.8]	32.9 [30.2 - 40.2]	37.2 [35.2 - 43.7]	41.9 [40.1 - 47.9]	46.8 [45.1 - 52.4]	51.7 [50.1 - 57.1]
34 56	24.9 [18.6 - 33.4]	25.5 [20.8 - 33.7]	28.1 [25.3 - 35.3]	32.2 [30.2 - 38.4]	36.8 [35.1 - 42.4]	41.6 [40.1 - 46.8]	46.5 [45.1 - 51.5]	51.5 [50.1 - 56.3]
34 58	22.6 [16.9 - 30.3]	23.9 [20.4 - 31]	27.3 [25.2 - 33.4]	31.8 [30.1 - 37]	36.5 [35.1 - 41.3]	41.4 [40.1 - 45.9]	46.3 [45.1 - 50.7]	51.3 [50.1 - 55.7]
34 60	20.5 [15.3 - 27.5]	22.8 [20.3 - 28.8]	26.8 [25.1 - 31.9]	31.5 [30.1 - 35.9]	36.3 [35.1 - 40.5]	41.2 [40.1 - 45.3]	46.2 [45.1 - 50.2]	51.2 [50.1 - 55.1]
34 62	18.6 [13.9 - 25]	22 [20.2 - 27.2]	26.4 [25.1 - 30.8]	31.2 [30.1 - 35.1]	36.1 [35.1 - 39.8]	41.1 [40.1 - 44.7]	46.1 [45.1 - 49.7]	51.1 [50.1 - 54.7]
36 40	55.8 [41.7 - 74.9]	55.8 [41.7 - 74.9]	55.8 [41.7 - 74.9]	55.8 [41.7 - 74.9]	55.9 [41.9 - 74.9]	56.2 [43.4 - 75.1]	57.3 [46.7 - 75.6]	59.4 [51 - 76.9]
36 42	50.7 [37.8 - 67.9]	50.7 [37.8 - 67.9]	50.7 [37.8 - 67.9]	50.7 [37.9 - 67.9]	50.9 [38.8 - 68]	51.7 [41.7 - 68.5]	53.7 [45.9 - 69.6]	56.7 [50.6 - 71.5]
36 44	46 [34.3 - 61.6]	46 [34.3 - 61.6]	46 [34.3 - 61.6]	46 [34.7 - 61.6]	46.6 [36.9 - 61.9]	48.3 [40.9 - 62.9]	51.2 [45.6 - 64.7]	54.9 [50.4 - 67.3]
36 46	41.7 [31.1 - 55.9]	41.7 [31.1 - 55.9]	41.7 [31.2 - 55.9]	42 [32.5 - 56]	43.2 [36 - 56.7]	45.9 [40.5 - 58.3]	49.5 [45.4 - 60.9]	53.7 [50.3 - 64.2]
36 48	37.8 [28.2 - 50.7]	37.8 [28.2 - 50.7]	37.9 [28.7 - 50.7]	38.6 [31.2 - 51.1]	40.8 [35.6 - 52.4]	44.3 [40.4 - 54.7]	48.4 [45.3 - 58]	53 [50.2 - 61.8]
36 50	34.3 [25.6 - 46]	34.3 [25.6 - 46]	34.6 [26.9 - 46.1]	36.1 [30.7 - 47]	39.2 [35.4 - 49]	43.2 [40.3 - 52]	47.7 [45.2 - 55.8]	52.4 [50.2 - 59.9]
36 52	31.1 [23.2 - 41.7]	31.2 [23.4 - 41.7]	31.9 [26 - 42.1]	34.3 [30.4 - 43.6]	38.1 [35.3 - 46.3]	42.5 [40.2 - 49.9]	47.2 [45.2 - 54.1]	52 [50.2 - 58.6]
36 54	28.2 [21 - 37.9]	28.4 [21.8 - 37.9]	29.9 [25.5 - 38.8]	33.2 [30.3 - 41]	37.4 [35.2 - 44.3]	42.1 [40.2 - 48.4]	46.9 [45.1 - 52.8]	51.8 [50.1 - 57.5]
36 56	25.6 [19.1 - 34.4]	26.1 [20.9 - 34.6]	28.5 [25.3 - 36.1]	32.4 [30.2 - 39]	37 [35.1 - 42.8]	41.7 [40.1 - 47.2]	46.6 [45.1 - 51.8]	51.5 [50.1 - 56.6]
36 58	23.2 [17.3 - 31.2]	24.3 [20.5 - 31.8]	27.6 [25.2 - 34]	31.9 [30.1 - 37.5]	36.6 [35.1 - 41.7]	41.5 [40.1 - 46.3]	46.4 [45.1 - 51]	51.4 [50.1 - 55.9]

36 60	21.1 [15.7 - 28.3]	23.1 [20.3 - 29.5]	27 [25.2 - 32.3]	31.6 [30.1 - 36.3]	36.4 [35.1 - 40.8]	41.3 [40.1 - 45.5]	46.3 [45.1 - 50.4]	51.2 [50.1 - 55.4]
36 62	19.1 [14.2 - 25.7]	22.2 [20.2 - 27.7]	26.6 [25.1 - 31.1]	31.3 [30.1 - 35.4]	36.2 [35.1 - 40.1]	41.2 [40.1 - 45]	46.1 [45.1 - 49.9]	51.1 [50.1 - 54.9]

**Table 2B: SCA1: Expected age at onset (mean (SD)) from birth and for different current age according to the genotype**

CAG Repeat	At birth				Current Age				
	20	25	30	35	40	45	50		
26 40	49.7 (8.9)	49.7 (8.9)	49.7 (8.9)	49.7 (8.8)	50.2 (8.5)	51.6 (7.8)	54.1 (7)	57.5 (6.3)	
26 42	45.1 (8)	45.1 (8)	45.1 (8)	45.3 (7.8)	46.3 (7.3)	48.6 (6.5)	51.8 (5.7)	55.8 (5.1)	
26 44	40.9 (7.3)	40.9 (7.3)	40.9 (7.2)	41.5 (6.8)	43.4 (6.1)	46.4 (5.3)	50.3 (4.7)	54.6 (4.2)	
26 46	37.1 (6.6)	37.1 (6.6)	37.3 (6.4)	38.5 (5.8)	41.2 (5)	44.9 (4.3)	49.2 (3.9)	53.8 (3.6)	
26 48	33.6 (6)	33.7 (5.9)	34.2 (5.6)	36.3 (4.8)	39.8 (4.1)	43.9 (3.6)	48.4 (3.3)	53.2 (3)	
26 50	30.5 (5.4)	30.6 (5.3)	31.8 (4.7)	34.8 (3.9)	38.7 (3.4)	43.2 (3)	47.9 (2.8)	52.7 (2.6)	
26 52	27.7 (4.9)	28.1 (4.7)	30.1 (3.9)	33.7 (3.2)	38 (2.8)	42.7 (2.6)	47.5 (2.4)	52.4 (2.3)	
26 54	25.1 (4.5)	26 (4)	28.8 (3.2)	32.9 (2.7)	37.5 (2.4)	42.3 (2.2)	47.1 (2.1)	52.1 (2.1)	
26 56	22.8 (4.1)	24.4 (3.3)	28 (2.6)	32.4 (2.2)	37.1 (2)	42 (1.9)	46.9 (1.9)	51.9 (1.9)	
26 58	20.7 (3.7)	23.3 (2.7)	27.4 (2.2)	32 (1.9)	36.8 (1.8)	41.7 (1.7)	46.7 (1.7)	51.7 (1.7)	
26 60	18.7 (3.4)	22.6 (2.2)	26.9 (1.8)	31.7 (1.7)	36.6 (1.6)	41.6 (1.5)	46.5 (1.5)	51.5 (1.5)	
26 62	17 (3.1)	22 (1.9)	26.6 (1.6)	31.5 (1.5)	36.4 (1.4)	41.4 (1.4)	46.4 (1.4)	51.4 (1.4)	
28 40	51 (9)	51 (9)	51 (9)	51 (9)	51.4 (8.8)	52.5 (8.1)	54.8 (7.3)	58 (6.6)	
28 42	46.3 (8.2)	46.3 (8.2)	46.3 (8.2)	46.4 (8.1)	47.3 (7.6)	49.3 (6.8)	52.3 (6)	56.1 (5.4)	
28 44	42 (7.4)	42 (7.4)	42 (7.4)	42.5 (7.1)	44 (6.3)	46.9 (5.5)	50.6 (4.9)	54.8 (4.4)	
28 46	38.1 (6.7)	38.1 (6.7)	38.2 (6.6)	39.3 (6)	41.7 (5.2)	45.3 (4.5)	49.4 (4)	53.9 (3.7)	
28 48	34.5 (6.1)	34.6 (6.1)	35 (5.8)	36.8 (5)	40.1 (4.3)	44.1 (3.7)	48.6 (3.4)	53.3 (3.1)	
28 50	31.3 (5.5)	31.4 (5.5)	32.4 (4.9)	35.1 (4.1)	38.9 (3.5)	43.3 (3.1)	48 (2.9)	52.8 (2.7)	
28 52	28.4 (5)	28.7 (4.8)	30.5 (4.1)	33.9 (3.4)	38.1 (2.9)	42.8 (2.6)	47.5 (2.5)	52.4 (2.4)	
28 54	25.8 (4.6)	26.5 (4.1)	29.1 (3.3)	33.1 (2.8)	37.6 (2.5)	42.3 (2.3)	47.2 (2.2)	52.1 (2.1)	
28 56	23.4 (4.2)	24.8 (3.5)	28.2 (2.7)	32.5 (2.3)	37.2 (2.1)	42 (2)	46.9 (1.9)	51.9 (1.9)	
28 58	21.2 (3.8)	23.6 (2.8)	27.5 (2.3)	32.1 (2)	36.9 (1.8)	41.8 (1.8)	46.7 (1.7)	51.7 (1.7)	
28 60	19.2 (3.4)	22.7 (2.3)	27 (1.9)	31.8 (1.7)	36.6 (1.6)	41.6 (1.6)	46.6 (1.6)	51.6 (1.6)	
28 62	17.5 (3.1)	22.2 (1.9)	26.7 (1.6)	31.5 (1.5)	36.5 (1.4)	41.4 (1.4)	46.4 (1.4)	51.4 (1.4)	
30 40	52.4 (9.3)	52.4 (9.3)	52.4 (9.3)	52.4 (9.2)	52.6 (9)	53.6 (8.5)	55.6 (7.7)	58.6 (6.9)	
30 42	47.5 (8.4)	47.5 (8.4)	47.5 (8.4)	47.6 (8.3)	48.3 (7.9)	50 (7.1)	52.9 (6.3)	56.5 (5.6)	
30 44	43.1 (7.6)	43.1 (7.6)	43.1 (7.6)	43.5 (7.3)	44.8 (6.6)	47.4 (5.8)	51 (5.1)	55.1 (4.6)	
30 46	39.1 (6.9)	39.1 (6.9)	39.2 (6.8)	40 (6.3)	42.3 (5.5)	45.6 (4.8)	49.7 (4.2)	54.1 (3.9)	
30 48	35.5 (6.3)	35.5 (6.2)	35.8 (6)	37.4 (5.3)	40.4 (4.5)	44.4 (3.9)	48.8 (3.5)	53.4 (3.3)	

30 50	32.2 (5.7)	32.2 (5.6)	33 (5.1)	35.5 (4.3)	39.2 (3.7)	43.5 (3.3)	48.1 (3)	52.9 (2.8)
30 52	29.2 (5.2)	29.4 (5)	30.9 (4.3)	34.2 (3.5)	38.3 (3)	42.9 (2.7)	47.6 (2.6)	52.5 (2.5)
30 54	26.5 (4.7)	27 (4.3)	29.4 (3.5)	33.3 (2.9)	37.7 (2.6)	42.4 (2.4)	47.3 (2.2)	52.2 (2.2)
30 56	24 (4.3)	25.2 (3.6)	28.4 (2.9)	32.6 (2.4)	37.3 (2.2)	42.1 (2.1)	47 (2)	52 (1.9)
30 58	21.8 (3.9)	23.9 (3)	27.6 (2.4)	32.2 (2.1)	36.9 (1.9)	41.8 (1.8)	46.8 (1.8)	51.8 (1.8)
30 60	19.8 (3.5)	22.9 (2.5)	27.1 (2)	31.8 (1.8)	36.7 (1.7)	41.6 (1.6)	46.6 (1.6)	51.6 (1.6)
30 62	17.9 (3.2)	22.3 (2)	26.8 (1.7)	31.6 (1.6)	36.5 (1.5)	41.5 (1.5)	46.5 (1.5)	51.5 (1.5)
32 40	53.8 (9.5)	53.8 (9.5)	53.8 (9.5)	53.8 (9.5)	54 (9.4)	54.8 (8.9)	56.5 (8.1)	59.3 (7.3)
32 42	48.8 (8.6)	48.8 (8.6)	48.8 (8.6)	48.9 (8.6)	49.4 (8.2)	50.9 (7.5)	53.5 (6.7)	57 (6)
32 44	44.3 (7.8)	44.3 (7.8)	44.3 (7.8)	44.5 (7.6)	45.7 (7)	48.1 (6.2)	51.5 (5.4)	55.5 (4.9)
32 46	40.1 (7.1)	40.1 (7.1)	40.2 (7)	40.9 (6.6)	42.9 (5.8)	46.1 (5)	50 (4.5)	54.4 (4.1)
32 48	36.4 (6.4)	36.4 (6.4)	36.7 (6.2)	38 (5.6)	40.9 (4.8)	44.7 (4.1)	49 (3.7)	53.6 (3.4)
32 50	33 (5.8)	33.1 (5.8)	33.7 (5.4)	36 (4.6)	39.5 (3.9)	43.7 (3.4)	48.3 (3.1)	53 (2.9)
32 52	30 (5.3)	30.1 (5.2)	31.5 (4.5)	34.5 (3.8)	38.5 (3.2)	43 (2.9)	47.8 (2.7)	52.6 (2.6)
32 54	27.2 (4.8)	27.6 (4.5)	29.8 (3.7)	33.5 (3.1)	37.9 (2.7)	42.6 (2.5)	47.4 (2.3)	52.3 (2.3)
32 56	24.7 (4.4)	25.6 (3.8)	28.6 (3.1)	32.8 (2.6)	37.4 (2.3)	42.2 (2.1)	47.1 (2.1)	52 (2)
32 58	22.4 (4)	24.2 (3.2)	27.8 (2.5)	32.3 (2.2)	37 (2)	41.9 (1.9)	46.8 (1.8)	51.8 (1.8)
32 60	20.3 (3.6)	23.2 (2.6)	27.3 (2.1)	31.9 (1.9)	36.8 (1.7)	41.7 (1.7)	46.7 (1.7)	51.7 (1.7)
32 62	18.4 (3.3)	22.4 (2.1)	26.9 (1.8)	31.7 (1.6)	36.6 (1.5)	41.5 (1.5)	46.5 (1.5)	51.5 (1.5)
34 40	55.2 (9.8)	55.2 (9.8)	55.2 (9.8)	55.2 (9.8)	55.4 (9.7)	56 (9.3)	57.6 (8.6)	60.1 (7.8)
34 42	50.1 (8.9)	50.1 (8.9)	50.1 (8.9)	50.2 (8.9)	50.6 (8.6)	51.9 (7.9)	54.3 (7.1)	57.6 (6.3)
34 44	45.4 (8.1)	45.4 (8.1)	45.5 (8.1)	45.7 (7.9)	46.6 (7.4)	48.8 (6.5)	52 (5.8)	55.9 (5.2)
34 46	41.2 (7.3)	41.2 (7.3)	41.3 (7.3)	41.8 (6.9)	43.6 (6.2)	46.6 (5.4)	50.4 (4.7)	54.7 (4.3)
34 48	37.4 (6.6)	37.4 (6.6)	37.6 (6.5)	38.8 (5.9)	41.4 (5.1)	45 (4.4)	49.3 (3.9)	53.8 (3.6)
34 50	33.9 (6)	34 (6)	34.5 (5.6)	36.5 (4.9)	39.9 (4.1)	44 (3.6)	48.5 (3.3)	53.2 (3.1)
34 52	30.8 (5.5)	30.9 (5.4)	32 (4.8)	34.9 (4)	38.8 (3.4)	43.2 (3)	47.9 (2.8)	52.7 (2.7)
34 54	27.9 (5)	28.3 (4.7)	30.2 (4)	33.8 (3.3)	38.1 (2.8)	42.7 (2.6)	47.5 (2.4)	52.4 (2.4)
34 56	25.3 (4.5)	26.2 (4)	28.9 (3.3)	33 (2.7)	37.5 (2.4)	42.3 (2.2)	47.2 (2.1)	52.1 (2.1)
34 58	23 (4.1)	24.6 (3.4)	28 (2.7)	32.4 (2.3)	37.1 (2.1)	42 (2)	46.9 (1.9)	51.9 (1.9)
34 60	20.8 (3.7)	23.4 (2.8)	27.4 (2.2)	32 (2)	36.9 (1.8)	41.8 (1.8)	46.7 (1.7)	51.7 (1.7)
34 62	18.9 (3.4)	22.6 (2.3)	27 (1.9)	31.7 (1.7)	36.6 (1.6)	41.6 (1.6)	46.6 (1.6)	51.6 (1.6)
36 40	56.7 (10.2)	56.7 (10.2)	56.7 (10.2)	56.7 (10.2)	56.8 (10.1)	57.3 (9.7)	58.7 (9.1)	61 (8.3)
36 42	51.5 (9.2)	51.5 (9.2)	51.5 (9.2)	51.5 (9.2)	51.8 (8.9)	52.9 (8.3)	55.1 (7.5)	58.3 (6.8)
36 44	46.7 (8.4)	46.7 (8.4)	46.7 (8.4)	46.8 (8.2)	47.6 (7.7)	49.6 (7)	52.6 (6.2)	56.4 (5.5)
36 46	42.3 (7.6)	42.3 (7.6)	42.4 (7.6)	42.8 (7.2)	44.4 (6.5)	47.2 (5.7)	50.8 (5.1)	55 (4.6)
36 48	38.4 (6.9)	38.4 (6.9)	38.6 (6.8)	39.6 (6.2)	42 (5.4)	45.5 (4.7)	49.6 (4.2)	54.1 (3.8)
36 50	34.8 (6.3)	34.9 (6.2)	35.3 (5.9)	37.1 (5.2)	40.3 (4.4)	44.3 (3.9)	48.7 (3.5)	53.4 (3.3)

36 52	31.6 (5.7)	31.7 (5.6)	32.7 (5.1)	35.3 (4.3)	39.1 (3.6)	43.5 (3.2)	48.1 (3)	52.9 (2.8)
36 54	28.7 (5.2)	28.9 (5)	30.7 (4.2)	34.1 (3.5)	38.3 (3)	42.9 (2.7)	47.7 (2.6)	52.5 (2.5)
36 56	26 (4.7)	26.7 (4.3)	29.3 (3.5)	33.2 (2.9)	37.7 (2.6)	42.4 (2.4)	47.3 (2.3)	52.2 (2.2)
36 58	23.6 (4.3)	25 (3.6)	28.3 (2.9)	32.6 (2.4)	37.3 (2.2)	42.1 (2.1)	47 (2)	52 (2)
36 60	21.4 (3.9)	23.7 (3)	27.6 (2.4)	32.2 (2.1)	37 (1.9)	41.9 (1.8)	46.8 (1.8)	51.8 (1.8)
36 62	19.4 (3.5)	22.9 (2.4)	27.1 (2)	31.8 (1.8)	36.7 (1.7)	41.7 (1.7)	46.6 (1.6)	51.6 (1.6)

---

**Table 3: SCA2: Expected age at onset from birth and for different current age according to the genotype**

CAG Repeat		Current Age							
		At birth	20	25	30	35	40	45	50
35	Mean (SD)	53.8 (13.8)	53.8 (13.8)	53.8 (13.8)	54.2 (13.6)	55.2 (13)	57 (12.3)	59.7 (11.6)	63 (10.9)
35	Median [90% CR]	52.1 [34.3 - 79]	52.1 [34.4 - 79]	52.1 [34.5 - 79]	52.3 [35.4 - 79.1]	53.1 [37.9 - 79.6]	54.6 [41.7 - 80.5]	57.1 [46.2 - 82.1]	60.3 [50.9 - 84.4]
36	Mean (SD)	48.4 (12.4)	48.4 (12.4)	48.6 (12.3)	49.3 (11.9)	50.9 (11.3)	53.4 (10.5)	56.7 (9.8)	60.5 (9.3)
36	Median [90% CR]	46.9 [30.9 - 71.1]	46.9 [31 - 71.1]	47 [31.4 - 71.1]	47.5 [33.2 - 71.4]	48.8 [36.7 - 72.2]	51.1 [41.1 - 73.7]	54.2 [45.8 - 75.9]	58 [50.7 - 78.8]
37	Mean (SD)	43.6 (11.2)	43.6 (11.1)	44 (10.9)	45.2 (10.3)	47.5 (9.6)	50.7 (8.9)	54.4 (8.3)	58.6 (7.9)
37	Median [90% CR]	42.2 [27.9 - 64]	42.2 [28 - 64]	42.5 [29 - 64.1]	43.4 [31.9 - 64.7]	45.4 [36.1 - 66]	48.5 [40.8 - 68.1]	52.2 [45.6 - 70.9]	56.4 [50.5 - 74.3]
38	Mean (SD)	39.2 (10.1)	39.3 (10)	40.1 (9.6)	42 (8.9)	44.9 (8.1)	48.6 (7.6)	52.8 (7.1)	57.2 (6.8)
38	Median [90% CR]	38 [25.1 - 57.6]	38.1 [25.4 - 57.6]	38.6 [27.3 - 57.9]	40.2 [31.2 - 58.9]	42.9 [35.7 - 60.8]	46.6 [40.5 - 63.5]	50.8 [45.5 - 66.9]	55.2 [50.4 - 70.7]
39	Mean (SD)	35.3 (9.1)	35.6 (8.9)	36.9 (8.3)	39.4 (7.5)	43 (6.9)	47.1 (6.4)	51.5 (6.1)	56.1 (5.9)
39	Median [90% CR]	34.2 [22.6 - 51.8]	34.4 [23.4 - 51.9]	35.4 [26.4 - 52.5]	37.7 [30.8 - 54.1]	41.2 [35.5 - 56.6]	45.3 [40.4 - 59.8]	49.7 [45.4 - 63.7]	54.4 [50.3 - 67.9]
40	Mean (SD)	31.8 (8.2)	32.4 (7.8)	34.4 (7.1)	37.5 (6.4)	41.5 (5.9)	45.9 (5.5)	50.5 (5.3)	55.3 (5.2)
40	Median [90% CR]	30.8 [20.3 - 46.7]	31.2 [22 - 46.9]	32.9 [25.9 - 47.9]	35.9 [30.5 - 50.1]	39.9 [35.4 - 53.2]	44.3 [40.3 - 56.9]	48.9 [45.3 - 61.1]	53.7 [50.3 - 65.6]
41	Mean (SD)	28.6 (7.3)	29.8 (6.7)	32.4 (6)	36.1 (5.4)	40.4 (5)	45 (4.8)	49.8 (4.7)	54.6 (4.6)
41	Median [90% CR]	27.7 [18.3 - 42]	28.6 [21.2 - 42.5]	31 [25.6 - 44.1]	34.6 [30.4 - 46.9]	39 [35.3 - 50.4]	43.6 [40.3 - 54.6]	48.4 [45.3 - 59]	53.2 [50.2 - 63.7]
42	Mean (SD)	25.8 (6.6)	27.7 (5.8)	30.9 (5.1)	35 (4.6)	39.6 (4.4)	44.3 (4.2)	49.2 (4.1)	54.1 (4.1)
42	Median [90% CR]	25 [16.5 - 37.8]	26.5 [20.7 - 38.8]	29.6 [25.4 - 41]	33.7 [30.3 - 44.3]	38.3 [35.3 - 48.3]	43.1 [40.2 - 52.7]	47.9 [45.2 - 57.4]	52.9 [50.2 - 62.3]
43	Mean (SD)	23.2 (6)	26.1 (4.9)	29.8 (4.4)	34.2 (4)	38.9 (3.8)	43.8 (3.7)	48.7 (3.7)	53.7 (3.7)
43	Median [90% CR]	22.5 [14.8 - 34.1]	25 [20.5 - 35.7]	28.7 [25.3 - 38.5]	33.1 [30.2 - 42.2]	37.8 [35.2 - 46.6]	42.6 [40.2 - 51.2]	47.6 [45.2 - 56.1]	52.6 [50.2 - 61]
44	Mean (SD)	20.9 (5.4)	24.9 (4.2)	29 (3.7)	33.6 (3.5)	38.4 (3.4)	43.3 (3.3)	48.3 (3.3)	53.3 (3.4)
44	Median [90% CR]	20.2 [13.3 - 30.7]	23.8 [20.3 - 33.1]	28 [25.2 - 36.4]	32.6 [30.2 - 40.6]	37.4 [35.2 - 45.2]	42.3 [40.2 - 50]	47.3 [45.2 - 55]	52.3 [50.2 - 60]
45	Mean (SD)	18.8 (4.9)	24 (3.6)	28.4 (3.2)	33.1 (3.1)	38 (3)	43 (3)	48 (3)	53 (3.1)
45	Median [90% CR]	18.2 [12 - 27.7]	23 [20.2 - 31]	27.5 [25.2 - 34.8]	32.2 [30.2 - 39.3]	37.1 [35.2 - 44]	42.1 [40.2 - 49]	47.1 [45.2 - 54]	52.1 [50.2 - 59.2]
46	Mean (SD)	16.9 (4.4)	23.3 (3.1)	27.9 (2.8)	32.8 (2.7)	37.7 (2.7)	42.7 (2.7)	47.8 (2.8)	52.8 (2.8)
46	Median [90% CR]	16.4 [10.8 - 24.9]	22.4 [20.2 - 29.4]	27.1 [25.2 - 33.6]	31.9 [30.1 - 38.2]	36.9 [35.1 - 43.1]	41.9 [40.1 - 48.2]	46.9 [45.1 - 53.3]	51.9 [50.1 - 58.4]
47	Mean (SD)	15.2 (4)	22.8 (2.7)	27.5 (2.5)	32.5 (2.5)	37.5 (2.5)	42.5 (2.5)	47.5 (2.6)	52.6 (2.6)
47	Median [90% CR]	14.8 [9.7 - 22.5]	22 [20.2 - 28.1]	26.8 [25.1 - 32.5]	31.7 [30.1 - 37.4]	36.7 [35.1 - 42.4]	41.7 [40.1 - 47.5]	46.7 [45.1 - 52.6]	51.8 [50.1 - 57.8]
48	Mean (SD)	13.7 (3.6)	22.4 (2.3)	27.3 (2.2)	32.2 (2.2)	37.2 (2.3)	42.3 (2.3)	47.3 (2.4)	52.4 (2.5)
48	Median [90% CR]	13.3 [8.7 - 20.2]	21.7 [20.1 - 27]	26.6 [25.1 - 31.7]	31.5 [30.1 - 36.7]	36.5 [35.1 - 41.7]	41.6 [40.1 - 46.9]	46.6 [45.1 - 52.1]	51.7 [50.1 - 57.3]
49	Mean (SD)	12.4 (3.2)	22.1 (2.1)	27 (2)	32 (2)	37.1 (2.1)	42.1 (2.1)	47.2 (2.2)	52.3 (2.3)
49	Median [90% CR]	12 [7.8 - 18.2]	21.5 [20.1 - 26.2]	26.4 [25.1 - 31]	31.4 [30.1 - 36.1]	36.4 [35.1 - 41.2]	41.5 [40.1 - 46.4]	46.5 [45.1 - 51.6]	51.6 [50.1 - 56.8]
50	Mean (SD)	11.1 (2.9)	21.8 (1.8)	26.8 (1.8)	31.9 (1.9)	36.9 (1.9)	42 (2)	47.1 (2.1)	52.1 (2.2)
50	Median [90% CR]	10.8 [7.1 - 16.4]	21.3 [20.1 - 25.5]	26.3 [25.1 - 30.5]	31.3 [30.1 - 35.6]	36.3 [35.1 - 40.7]	41.4 [40.1 - 46]	46.4 [45.1 - 51.2]	51.5 [50.1 - 56.4]

**Table 4: SCA3: Expected age at onset from birth and for different current age according to the genotype**

CAG Rep		Current Age								
		At birth	20	25	30	35	40	45	50	
54	Mean (SD)	87.2 (19.5)	87.2 (19.5)	87.2 (19.5)	87.2 (19.5)	87.2 (19.5)	87.3 (19.4)	87.3 (19.4)	87.6 (19.2)	
54	Median [90% CR]	85.1 [59.3 - 122.3]	85.1 [59.3 - 122.3]	85.1 [59.3 - 122.3]	85.1 [59.3 - 122.3]	85.1 [59.3 - 122.3]	85.2 [59.3 - 122.3]	85.2 [59.5 - 122.4]	85.3 [60.2 - 122.4]	
55	Mean (SD)	82.4 (18.3)	82.4 (18.3)	82.4 (18.3)	82.4 (18.3)	82.4 (18.3)	82.5 (18.3)	82.6 (18.2)	83 (17.9)	
55	Median [90% CR]	80.5 [56.1 - 115.5]	80.5 [56.1 - 115.5]	80.5 [56.1 - 115.5]	80.5 [56.1 - 115.5]	80.5 [56.1 - 115.5]	80.5 [56.1 - 115.5]	80.6 [56.5 - 115.6]	80.8 [57.6 - 115.7]	
56	Mean (SD)	77.9 (17.3)	77.9 (17.3)	77.9 (17.3)	77.9 (17.3)	77.9 (17.3)	78 (17.2)	78.2 (17.1)	78.8 (16.7)	
56	Median [90% CR]	76.1 [53 - 109.1]	76.1 [53 - 109.1]	76.1 [53 - 109.1]	76.1 [53 - 109.1]	76.1 [53 - 109.1]	76.1 [53.2 - 109.1]	76.2 [53.9 - 109.2]	76.6 [55.6 - 109.5]	
57	Mean (SD)	73.6 (16.3)	73.6 (16.3)	73.6 (16.3)	73.6 (16.3)	73.7 (16.3)	73.8 (16.2)	74.2 (15.9)	75.1 (15.4)	
57	Median [90% CR]	71.9 [50.1 - 103.1]	71.9 [50.1 - 103.1]	71.9 [50.1 - 103.1]	71.9 [50.1 - 103.1]	71.9 [50.2 - 103.1]	72 [50.5 - 103.1]	72.2 [51.6 - 103.2]	72.9 [54 - 103.6]	
58	Mean (SD)	69.6 (15.4)	69.6 (15.4)	69.6 (15.4)	69.6 (15.4)	69.6 (15.4)	69.8 (15.2)	70.5 (14.8)	71.7 (14.2)	
58	Median [90% CR]	67.9 [47.4 - 97.4]	67.9 [47.4 - 97.4]	67.9 [47.4 - 97.4]	67.9 [47.4 - 97.4]	68 [47.5 - 97.4]	68.1 [48.1 - 97.4]	68.5 [49.8 - 97.7]	69.5 [52.9 - 98.2]	
59	Mean (SD)	65.8 (14.5)	65.8 (14.5)	65.8 (14.5)	65.8 (14.5)	65.9 (14.5)	66.2 (14.2)	67.1 (13.7)	68.8 (13)	
59	Median [90% CR]	64.2 [44.8 - 92]	64.2 [44.8 - 92]	64.2 [44.8 - 92]	64.2 [44.9 - 92]	64.3 [45.1 - 92]	64.5 [46.1 - 92.1]	65.1 [48.5 - 92.5]	66.5 [52.1 - 93.3]	
60	Mean (SD)	62.2 (13.7)	62.2 (13.7)	62.2 (13.7)	62.2 (13.7)	62.3 (13.6)	62.9 (13.2)	64.1 (12.6)	66.2 (11.8)	
60	Median [90% CR]	60.7 [42.4 - 86.9]	60.7 [42.4 - 86.9]	60.7 [42.4 - 86.9]	60.7 [42.5 - 86.9]	60.8 [42.9 - 86.9]	61.2 [44.4 - 87.1]	62.1 [47.5 - 87.7]	63.9 [51.6 - 88.8]	
61	Mean (SD)	58.7 (12.9)	58.7 (12.9)	58.7 (12.9)	58.8 (12.9)	59.1 (12.7)	59.9 (12.2)	61.5 (11.5)	64 (10.7)	
61	Median [90% CR]	57.4 [40.1 - 82.1]	57.4 [40.1 - 82.1]	57.4 [40.1 - 82.1]	57.4 [40.2 - 82.1]	57.5 [41 - 82.2]	58.1 [43.2 - 82.5]	59.5 [46.8 - 83.3]	61.7 [51.2 - 84.7]	
62	Mean (SD)	55.5 (12.2)	55.5 (12.2)	55.5 (12.2)	55.6 (12.1)	56 (11.8)	57.2 (11.3)	59.3 (10.5)	62.2 (9.7)	
62	Median [90% CR]	54.2 [37.9 - 77.6]	54.2 [37.9 - 77.6]	54.2 [37.9 - 77.6]	54.3 [38.2 - 77.6]	54.5 [39.4 - 77.7]	55.4 [42.3 - 78.2]	57.2 [46.4 - 79.3]	59.9 [50.9 - 81.1]	
63	Mean (SD)	52.5 (11.5)	52.5 (11.5)	52.5 (11.5)	52.6 (11.4)	53.3 (11)	54.9 (10.3)	57.4 (9.5)	60.6 (8.8)	
63	Median [90% CR]	51.2 [35.8 - 73.3]	51.2 [35.8 - 73.3]	51.3 [35.9 - 73.3]	51.3 [36.3 - 73.3]	51.8 [38.2 - 73.6]	53.1 [41.7 - 74.3]	55.3 [46 - 75.7]	58.5 [50.8 - 77.8]	
64	Mean (SD)	49.6 (10.9)	49.6 (10.9)	49.6 (10.9)	49.9 (10.7)	50.9 (10.1)	52.8 (9.4)	55.7 (8.6)	59.3 (8)	
64	Median [90% CR]	48.4 [33.9 - 69.2]	48.4 [33.9 - 69.2]	48.5 [34 - 69.2]	48.6 [34.7 - 69.3]	49.3 [37.3 - 69.7]	51 [41.2 - 70.8]	53.7 [45.8 - 72.5]	57.2 [50.6 - 75]	
65	Mean (SD)	46.9 (10.3)	46.9 (10.3)	46.9 (10.2)	47.4 (9.9)	48.7 (9.3)	51.1 (8.5)	54.4 (7.8)	58.2 (7.2)	
65	Median [90% CR]	45.8 [32 - 65.4]	45.8 [32 - 65.4]	45.8 [32.2 - 65.4]	46.1 [33.5 - 65.6]	47.1 [36.6 - 66.2]	49.3 [40.9 - 67.5]	52.4 [45.7 - 69.7]	56.3 [50.5 - 72.5]	
66	Mean (SD)	44.3 (9.7)	44.3 (9.7)	44.4 (9.6)	45.1 (9.2)	46.8 (8.5)	49.6 (7.7)	53.2 (7.1)	57.3 (6.6)	
66	Median [90% CR]	43.3 [30.3 - 61.8]	43.3 [30.3 - 61.8]	43.3 [30.6 - 61.9]	43.8 [32.5 - 62.1]	45.3 [36.2 - 63]	47.9 [40.7 - 64.7]	51.4 [45.5 - 67.2]	55.5 [50.4 - 70.3]	
67	Mean (SD)	41.9 (9.2)	41.9 (9.2)	42.1 (9)	43.1 (8.5)	45.2 (7.7)	48.4 (7)	52.3 (6.4)	56.5 (6)	
67	Median [90% CR]	40.9 [28.6 - 58.4]	40.9 [28.6 - 58.4]	41 [29.2 - 58.5]	41.8 [31.8 - 58.9]	43.7 [35.9 - 60.1]	46.7 [40.6 - 62.1]	50.5 [45.5 - 65]	54.8 [50.4 - 68.4]	
68	Mean (SD)	39.6 (8.7)	39.6 (8.7)	39.9 (8.4)	41.3 (7.8)	43.9 (7)	47.4 (6.3)	51.4 (5.8)	55.9 (5.5)	
68	Median [90% CR]	38.7 [27.1 - 55.2]	38.7 [27.1 - 55.2]	38.9 [28.1 - 55.4]	40 [31.3 - 56]	42.3 [35.7 - 57.5]	45.7 [40.5 - 59.9]	49.8 [45.4 - 63]	54.3 [50.3 - 66.8]	
69	Mean (SD)	37.4 (8.2)	37.5 (8.2)	38 (7.8)	39.8 (7.1)	42.7 (6.3)	46.5 (5.8)	50.8 (5.3)	55.3 (5)	
69	Median [90% CR]	36.5 [25.6 - 52.2]	36.6 [25.7 - 52.2]	36.9 [27.2 - 52.4]	38.4 [31 - 53.3]	41.2 [35.6 - 55.1]	45 [40.4 - 57.9]	49.3 [45.3 - 61.4]	53.8 [50.3 - 65.3]	
70	Mean (SD)	35.3 (7.8)	35.4 (7.7)	36.3 (7.2)	38.4 (6.5)	41.8 (5.8)	45.8 (5.2)	50.2 (4.9)	54.8 (4.6)	



70	Median [90% CR]	34.5 [24.2 - 49.3]	34.6 [24.4 - 49.4]	35.2 [26.6 - 49.7]	37.1 [30.7 - 50.9]	40.3 [35.5 - 53.1]	44.3 [40.3 - 56.2]	48.8 [45.3 - 59.9]	53.5 [50.3 - 64.1]
71	Mean (SD)	33.4 (7.3)	33.6 (7.2)	34.7 (6.6)	37.3 (5.9)	41 (5.2)	45.2 (4.8)	49.7 (4.5)	54.4 (4.3)
71	Median [90% CR]	32.6 [22.8 - 46.6]	32.7 [23.3 - 46.7]	33.6 [26.2 - 47.2]	36 [30.6 - 48.7]	39.6 [35.4 - 51.3]	43.8 [40.3 - 54.7]	48.4 [45.3 - 58.6]	53.1 [50.2 - 63]
72	Mean (SD)	31.6 (6.9)	31.9 (6.7)	33.4 (6.1)	36.4 (5.3)	40.3 (4.7)	44.7 (4.4)	49.3 (4.1)	54.1 (4)
72	Median [90% CR]	30.8 [21.6 - 44.1]	31 [22.5 - 44.2]	32.3 [25.9 - 44.9]	35.1 [30.5 - 46.8]	39 [35.3 - 49.7]	43.4 [40.3 - 53.4]	48.1 [45.2 - 57.5]	52.9 [50.2 - 62]
73	Mean (SD)	29.8 (6.6)	30.3 (6.2)	32.3 (5.5)	35.6 (4.8)	39.7 (4.3)	44.2 (4)	48.9 (3.8)	53.8 (3.7)
73	Median [90% CR]	29.2 [20.4 - 41.7]	29.5 [21.8 - 41.9]	31.2 [25.6 - 42.9]	34.4 [30.4 - 45.1]	38.5 [35.3 - 48.3]	43.1 [40.2 - 52.2]	47.8 [45.2 - 56.6]	52.7 [50.2 - 61.2]
74	Mean (SD)	28.2 (6.2)	29 (5.8)	31.3 (5)	35 (4.4)	39.3 (4)	43.9 (3.7)	48.6 (3.5)	53.5 (3.5)
74	Median [90% CR]	27.6 [19.3 - 39.4]	28.1 [21.3 - 39.7]	30.2 [25.5 - 41]	33.8 [30.3 - 43.6]	38.1 [35.2 - 47.1]	42.8 [40.2 - 51.2]	47.6 [45.2 - 55.7]	52.5 [50.2 - 60.4]
75	Mean (SD)	26.7 (5.9)	27.8 (5.3)	30.5 (4.5)	34.4 (4)	38.8 (3.6)	43.5 (3.4)	48.4 (3.3)	53.3 (3.2)
75	Median [90% CR]	26 [18.2 - 37.3]	26.9 [20.9 - 37.7]	29.4 [25.4 - 39.4]	33.3 [30.3 - 42.3]	37.8 [35.2 - 46.1]	42.5 [40.2 - 50.4]	47.4 [45.2 - 55]	52.3 [50.2 - 59.7]
76	Mean (SD)	25.2 (5.6)	26.7 (4.8)	29.8 (4.1)	34 (3.6)	38.5 (3.3)	43.3 (3.2)	48.1 (3.1)	53.1 (3.1)
76	Median [90% CR]	24.6 [17.2 - 35.2]	25.8 [20.7 - 35.9]	28.8 [25.3 - 37.9]	32.9 [30.2 - 41.2]	37.5 [35.2 - 45.2]	42.3 [40.2 - 49.6]	47.2 [45.2 - 54.3]	52.1 [50.2 - 59.2]
77	Mean (SD)	23.8 (5.3)	25.8 (4.4)	29.3 (3.7)	33.6 (3.3)	38.2 (3.1)	43 (3)	47.9 (2.9)	52.9 (2.9)
77	Median [90% CR]	23.3 [16.2 - 33.3]	24.9 [20.5 - 34.3]	28.3 [25.3 - 36.7]	32.6 [30.2 - 40.2]	37.3 [35.2 - 44.4]	42.1 [40.2 - 49]	47 [45.2 - 53.7]	52 [50.1 - 58.6]

**Table 5A: SCA6: Expected age at onset (median [90%CR]) from birth and for different current age according to the genotype**

CAG Repeat	At birth				Current Age				
		35	40	45	50	55	60	65	
6 22	66.3 [48.7 - 90.1]	66.3 [48.7 - 90.1]	66.3 [49 - 90.2]	66.6 [50.2 - 90.3]	67.3 [52.8 - 90.7]	68.8 [56.7 - 91.5]	71.2 [61.1 - 93]	74.3 [65.8 - 95]	
6 24	55.3 [40.8 - 75.1]	55.4 [41.2 - 75.2]	55.9 [43 - 75.4]	57.1 [46.6 - 76.1]	59.3 [50.9 - 77.4]	62.5 [55.7 - 79.5]	66.3 [60.5 - 82.2]	70.5 [65.4 - 85.5]	
6 26	46.2 [34 - 62.8]	46.9 [36.9 - 63.2]	48.7 [40.9 - 64.2]	51.6 [45.6 - 66]	55.3 [50.4 - 68.7]	59.5 [55.4 - 71.9]	64 [60.3 - 75.7]	68.7 [65.3 - 79.8]	
6 28	38.6 [28.3 - 52.6]	41.5 [35.6 - 54.3]	44.9 [40.4 - 56.6]	48.9 [45.3 - 59.7]	53.4 [50.3 - 63.4]	58.1 [55.2 - 67.5]	62.9 [60.2 - 71.9]	67.7 [65.2 - 76.5]	
8 22	62.6 [46.5 - 84.2]	62.6 [46.5 - 84.2]	62.7 [47 - 84.3]	63.1 [48.7 - 84.5]	64.1 [52 - 85.1]	66.1 [56.2 - 86.2]	68.9 [60.8 - 88]	72.5 [65.6 - 90.4]	
8 24	52.3 [38.9 - 70.3]	52.4 [39.6 - 70.3]	53.1 [42.1 - 70.7]	54.7 [46.1 - 71.6]	57.5 [50.7 - 73.3]	61 [55.5 - 75.8]	65.1 [60.4 - 78.9]	69.5 [65.4 - 82.4]	
8 26	43.6 [32.4 - 58.8]	44.8 [36.3 - 59.4]	47 [40.7 - 60.7]	50.3 [45.5 - 62.9]	54.3 [50.3 - 65.9]	58.7 [55.3 - 69.5]	63.4 [60.3 - 73.5]	68.1 [65.2 - 77.8]	
8 28	36.4 [26.9 - 49.3]	40.3 [35.5 - 51.6]	44 [40.3 - 54.2]	48.3 [45.3 - 57.7]	52.9 [50.2 - 61.6]	57.7 [55.2 - 65.9]	62.5 [60.2 - 70.5]	67.4 [65.2 - 75.2]	
10 22	59.1 [44.2 - 79]	59.1 [44.3 - 79]	59.3 [45.1 - 79.1]	59.9 [47.5 - 79.4]	61.4 [51.4 - 80.3]	63.9 [55.9 - 81.8]	67.2 [60.6 - 84]	71.1 [65.5 - 86.8]	
10 24	49.4 [36.9 - 66]	49.6 [38.3 - 66.1]	50.6 [41.4 - 66.6]	52.8 [45.8 - 67.9]	56 [50.5 - 70]	60 [55.4 - 72.9]	64.3 [60.3 - 76.3]	68.8 [65.3 - 80.2]	
10 26	41.2 [30.8 - 55.2]	42.9 [35.9 - 56.1]	45.6 [40.5 - 57.8]	49.4 [45.4 - 60.5]	53.6 [50.3 - 63.8]	58.2 [55.2 - 67.7]	62.9 [60.2 - 71.9]	67.7 [65.2 - 76.4]	
10 28	34.4 [25.6 - 46.4]	39.3 [35.4 - 49.4]	43.3 [40.3 - 52.4]	47.8 [45.2 - 56.1]	52.5 [50.2 - 60.3]	57.3 [55.2 - 64.8]	62.2 [60.2 - 69.4]	67.2 [65.2 - 74.2]	
12 22	55.8 [41.9 - 74.4]	55.9 [42.1 - 74.4]	56.2 [43.5 - 74.6]	57.2 [46.7 - 75.1]	59.2 [51 - 76.3]	62.2 [55.6 - 78.2]	65.9 [60.5 - 80.8]	70.1 [65.4 - 84]	
12 24	46.6 [35 - 62.1]	47.1 [37.2 - 62.4]	48.6 [41 - 63.2]	51.4 [45.6 - 64.9]	55 [50.4 - 67.5]	59.2 [55.3 - 70.7]	63.7 [60.3 - 74.4]	68.3 [65.3 - 78.5]	
12 26	38.9 [29.1 - 52.1]	41.4 [35.7 - 53.5]	44.6 [40.4 - 55.6]	48.7 [45.3 - 58.6]	53.1 [50.2 - 62.3]	57.8 [55.2 - 66.4]	62.6 [60.2 - 70.8]	67.5 [65.2 - 75.4]	
12 28	32.5 [24.2 - 43.8]	38.6 [35.3 - 47.7]	42.9 [40.2 - 51]	47.5 [45.2 - 55]	52.3 [50.2 - 59.4]	57.1 [55.2 - 64]	62 [60.2 - 68.7]	67 [65.1 - 73.5]	
14 22	52.7 [39.5 - 70.3]	52.8 [40.1 - 70.4]	53.4 [42.3 - 70.7]	54.9 [46.2 - 71.5]	57.5 [50.7 - 73.1]	61 [55.5 - 75.5]	65 [60.4 - 78.5]	69.4 [65.3 - 82]	
14 24	44 [33 - 58.8]	45 [36.4 - 59.3]	47 [40.7 - 60.5]	50.3 [45.5 - 62.6]	54.3 [50.3 - 65.6]	58.7 [55.3 - 69.1]	63.3 [60.2 - 73.1]	68 [65.2 - 77.4]	
14 26	36.8 [27.4 - 49.3]	40.3 [35.5 - 51.4]	43.9 [40.3 - 53.9]	48.2 [45.3 - 57.3]	52.8 [50.2 - 61.2]	57.6 [55.2 - 65.5]	62.4 [60.2 - 70]	67.3 [65.2 - 74.7]	
14 28	30.7 [22.7 - 41.5]	38.1 [35.3 - 46.4]	42.6 [40.2 - 50.1]	47.3 [45.2 - 54.3]	52.1 [50.2 - 58.8]	57 [55.1 - 63.5]	61.9 [60.1 - 68.3]	66.9 [65.1 - 73.2]	
16 22	49.8 [37.2 - 66.7]	50.1 [38.4 - 66.9]	51 [41.5 - 67.4]	53.1 [45.8 - 68.6]	56.3 [50.6 - 70.7]	60.2 [55.4 - 73.5]	64.4 [60.3 - 76.8]	69 [65.3 - 80.6]	
16 24	41.6 [31 - 55.8]	43.2 [36 - 56.7]	45.9 [40.5 - 58.4]	49.5 [45.4 - 60.9]	53.8 [50.3 - 64.2]	58.3 [55.3 - 68.1]	63 [60.2 - 72.3]	67.8 [65.2 - 76.7]	
16 26	34.7 [25.7 - 46.9]	39.5 [35.4 - 49.8]	43.4 [40.3 - 52.7]	47.9 [45.2 - 56.4]	52.6 [50.2 - 60.6]	57.4 [55.2 - 65]	62.3 [60.2 - 69.6]	67.2 [65.2 - 74.4]	
16 28	29 [21.3 - 39.5]	37.8 [35.2 - 45.6]	42.4 [40.2 - 49.5]	47.1 [45.2 - 53.8]	52 [50.1 - 58.4]	56.9 [55.1 - 63.2]	61.9 [60.1 - 68.1]	66.9 [65.1 - 73]	

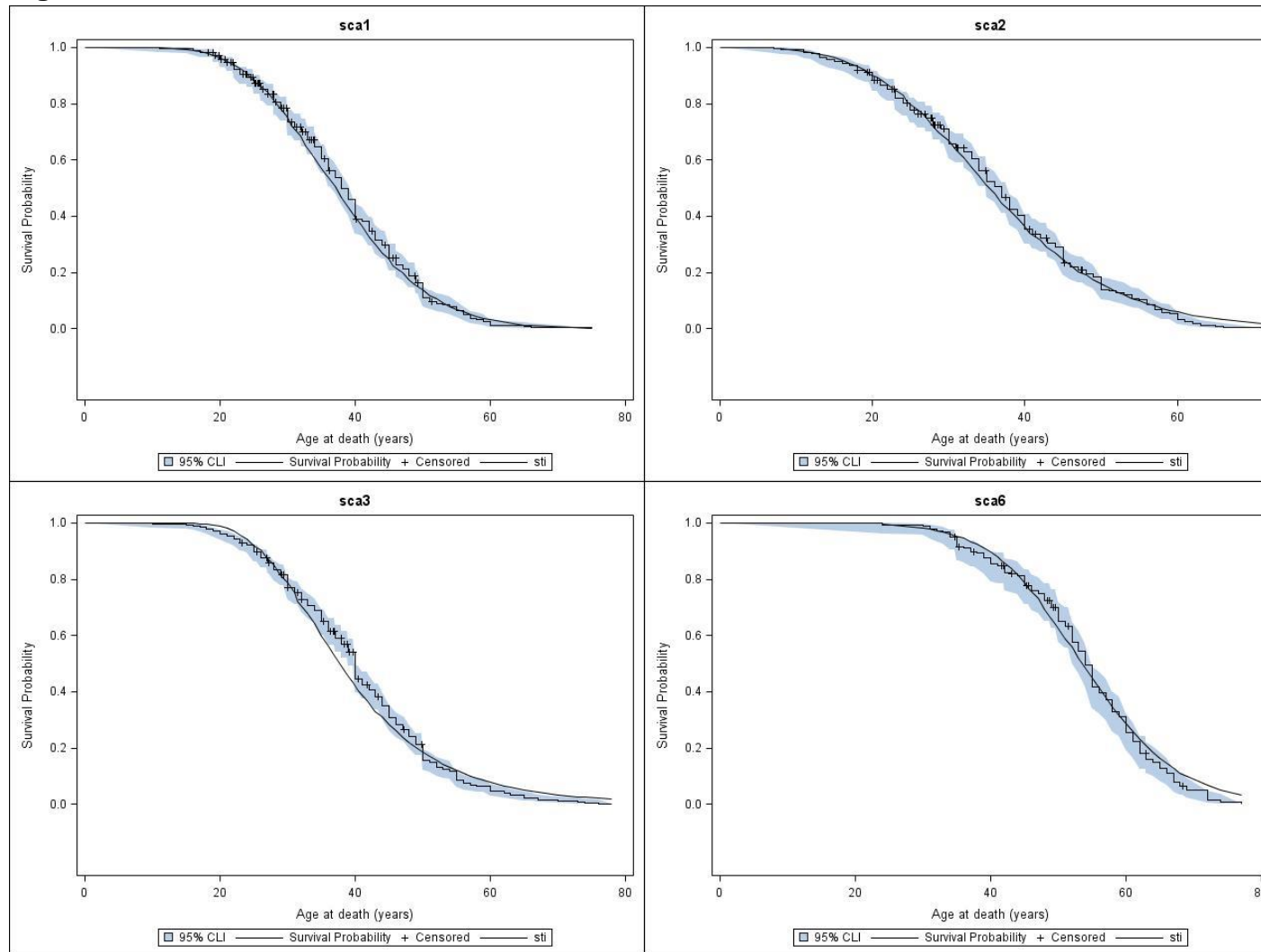
**Table 5B: SCA6: Expected age at onset (mean (SD)) from birth and for different current age according to the genotype**

CAG Repeat	At birth				Current Age				
		35	40	45	50	55	60	65	
6 22	67.4 (12.7)	67.4 (12.7)	67.5 (12.6)	67.9 (12.3)	68.9 (11.8)	70.7 (11)	73.3 (10.2)	76.5 (9.4)	
6 24	56.3 (10.6)	56.5 (10.4)	57.1 (10)	58.6 (9.3)	61.1 (8.5)	64.4 (7.7)	68.2 (7.1)	72.3 (6.6)	
6 26	47 (8.8)	48.1 (8.2)	50.1 (7.4)	53.1 (6.6)	56.9 (6)	61 (5.5)	65.5 (5.1)	70.1 (4.9)	

6 28	39.3 (7.5)	42.8 (6)	46.2 (5.3)	50.3 (4.7)	54.7 (4.4)	59.3 (4.1)	64.1 (3.9)	68.9 (3.8)
8 22	63.6 (11.6)	63.6 (11.6)	63.8 (11.4)	64.4 (11)	65.7 (10.4)	68 (9.5)	71 (8.8)	74.5 (8.1)
8 24	53.1 (9.6)	53.4 (9.4)	54.3 (8.9)	56.2 (8.1)	59.1 (7.3)	62.7 (6.6)	66.8 (6.1)	71.1 (5.7)
8 26	44.4 (8.1)	45.9 (7.2)	48.3 (6.4)	51.7 (5.7)	55.7 (5.1)	60.1 (4.7)	64.7 (4.4)	69.4 (4.2)
8 28	37.1 (6.9)	41.5 (5.2)	45.2 (4.6)	49.5 (4.1)	54 (3.8)	58.7 (3.6)	63.5 (3.5)	68.4 (3.4)
10 22	60 (10.7)	60.1 (10.6)	60.3 (10.4)	61.2 (9.9)	63 (9.1)	65.7 (8.3)	69.1 (7.6)	73 (7)
10 24	50.1 (8.9)	50.6 (8.6)	51.9 (7.9)	54.3 (7.1)	57.6 (6.3)	61.5 (5.7)	65.8 (5.3)	70.3 (5)
10 26	41.9 (7.5)	44 (6.4)	46.9 (5.6)	50.7 (4.9)	54.9 (4.5)	59.4 (4.2)	64.1 (3.9)	68.9 (3.8)
10 28	35 (6.4)	40.4 (4.6)	44.4 (4)	48.9 (3.6)	53.5 (3.4)	58.3 (3.2)	63.2 (3.1)	68.1 (3.1)
12 22	56.7 (10)	56.8 (9.9)	57.2 (9.5)	58.5 (8.9)	60.8 (8.1)	64 (7.3)	67.7 (6.6)	71.8 (6.1)
12 24	47.3 (8.3)	48.1 (7.8)	49.9 (7)	52.8 (6.2)	56.5 (5.6)	60.6 (5.1)	65 (4.7)	69.7 (4.4)
12 26	39.5 (7)	42.6 (5.7)	45.9 (4.9)	49.9 (4.4)	54.3 (4)	58.9 (3.7)	63.7 (3.6)	68.5 (3.4)
12 28	33 (6)	39.7 (4.1)	43.9 (3.6)	48.5 (3.3)	53.2 (3.1)	58 (3)	62.9 (2.9)	67.9 (2.8)
14 22	53.5 (9.4)	53.7 (9.3)	54.5 (8.8)	56.3 (8)	59.1 (7.2)	62.7 (6.5)	66.7 (5.9)	71 (5.5)
14 24	44.7 (7.9)	46 (7.1)	48.3 (6.3)	51.7 (5.6)	55.6 (5)	60 (4.6)	64.5 (4.3)	69.2 (4.1)
14 26	37.4 (6.7)	41.4 (5.1)	45.1 (4.5)	49.3 (4)	53.9 (3.7)	58.6 (3.5)	63.4 (3.3)	68.3 (3.2)
14 28	31.2 (5.8)	39.1 (3.7)	43.5 (3.3)	48.2 (3.1)	53 (2.9)	57.9 (2.8)	62.8 (2.8)	67.7 (2.7)
16 22	50.6 (9.1)	51 (8.7)	52.3 (8.1)	54.6 (7.3)	57.9 (6.5)	61.7 (5.9)	66 (5.5)	70.4 (5.1)
16 24	42.3 (7.6)	44.4 (6.5)	47.2 (5.7)	50.9 (5.1)	55.1 (4.6)	59.5 (4.3)	64.2 (4)	69 (3.9)
16 26	35.3 (6.5)	40.6 (4.7)	44.6 (4.1)	49 (3.7)	53.6 (3.5)	58.4 (3.3)	63.3 (3.2)	68.2 (3.1)
16 28	29.5 (5.6)	38.7 (3.4)	43.3 (3.1)	48 (2.9)	52.9 (2.8)	57.8 (2.7)	62.7 (2.7)	67.7 (2.7)

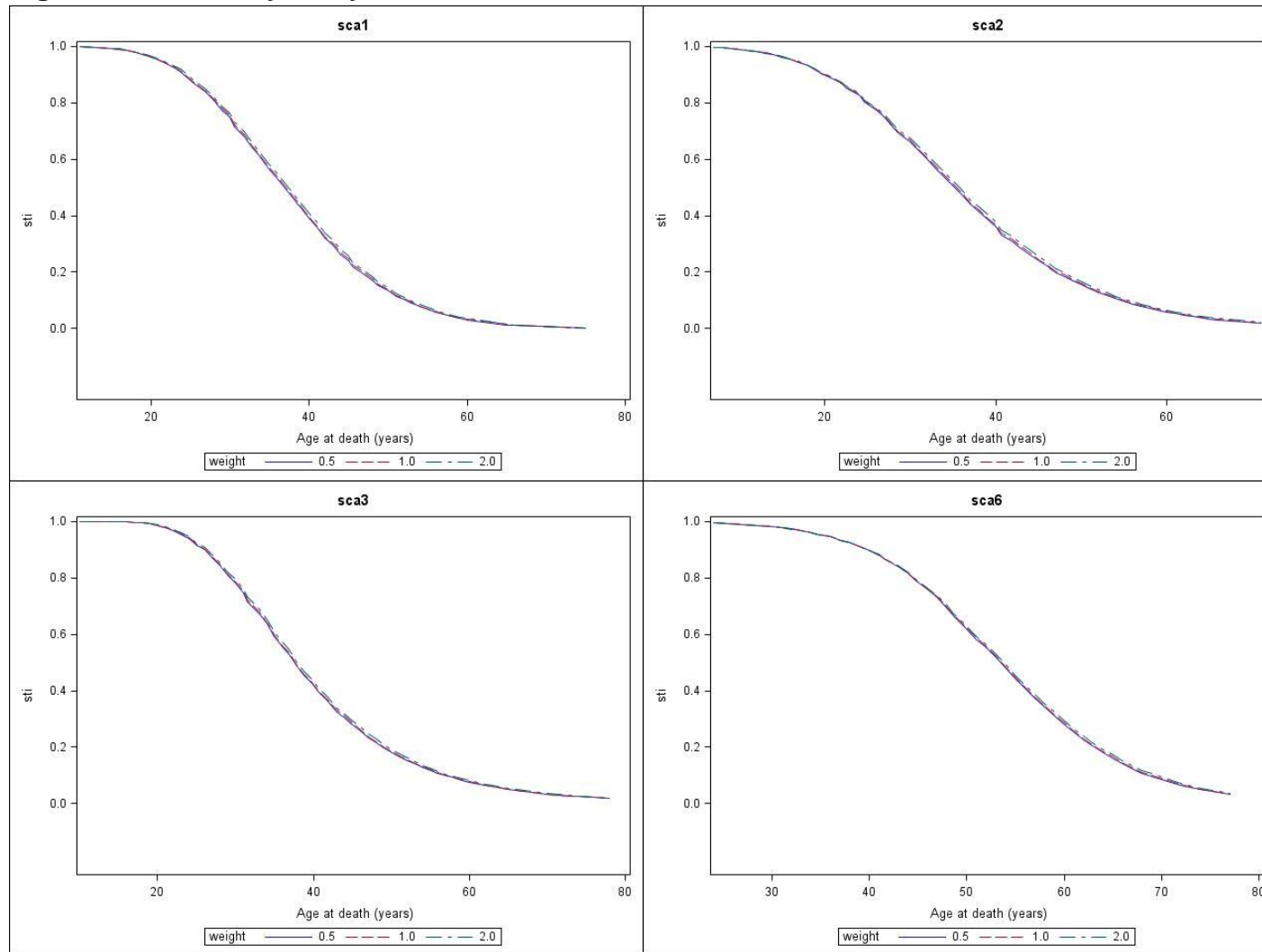
---

**Figure 1: Model validation**



The step line is the Kaplan-Meier curve obtained from the genotyped sample, with in blue the 95% Confidence interval. The straight solid line is the mean of the estimated survival function of the individuals obtained by the cross-over method.

**Figure 2: Sensitivity analysis**



Mean of the estimated survival function plotted with all individuals (weight=1), proportion of unaffected multiplied by 0.5 (weight=0.5) and by 2 (weight=2).