





OPEN ACCESS

# Practice guidelines for *BRCA1/2* tumour testing in ovarian cancer

Daria Grafodatskaya <sup>1,2</sup>, Darren D O’Rielly,<sup>3,4</sup> Karine Bedard,<sup>5,6</sup> Darci T Butcher,<sup>1,2</sup> Christopher J Howlett,<sup>7</sup> Alice Lytwyn,<sup>1,2</sup> Elizabeth McCready,<sup>1,2</sup> Jillian Parboosingh,<sup>8,9</sup> Elizabeth L Spriggs,<sup>10,11</sup> Andrea K Vaags,<sup>12,13</sup> Tracy L Stockley <sup>13,14</sup>

► Additional supplemental material is published online only. To view, please visit the journal online (<http://dx.doi.org/10.1136/jmedgenet-2021-108238>).

For numbered affiliations see end of article.

## Correspondence to

Dr Tracy L Stockley, Department of Clinical Laboratory Genetics, Laboratory Medicine Program, University Health Network, Toronto, Canada; [tracy.stockley@uhn.ca](mailto:tracy.stockley@uhn.ca)

DG and DDO’R contributed equally.

Received 23 September 2021  
Accepted 24 February 2022

## ABSTRACT

The purpose of this document is to provide pre-analytical, analytical and post-analytical considerations and recommendations to Canadian clinical laboratories developing, validating and offering next-generation sequencing (NGS)-based *BRCA1* and *BRCA2* (*BRCA1/2*) tumour testing in ovarian cancers. This document was drafted by the members of the Canadian College of Medical Geneticists (CCMG) somatic BRCA Ad Hoc Working Group, and representatives from the Canadian Association of Pathologists. The document was circulated to the CCMG members for comment. Following incorporation of feedback, this document has been approved by the CCMG board of directors. The CCMG is a Canadian organisation responsible for certifying medical geneticists and clinical laboratory geneticists, and for establishing professional and ethical standards for clinical genetics services in Canada. The current CCMG Practice Guidelines were developed as a resource for clinical laboratories in Canada; however, they are not inclusive of all information laboratories should consider in the validation and use of NGS for *BRCA1/2* tumour testing in ovarian cancers.

## PURPOSE AND SCOPE

Timely access to *BRCA1/2* tumour testing is becoming increasingly important in the clinical setting to identify patients with cancer who may benefit from poly (ADP-ribose) polymerase (PARP) inhibitor (PARPi) treatment. The clinical impact of testing is highlighted by the launch of the *BRCA* Testing-to-Treatment (TtoT) Community of Practice in 2016 by the Society of Gynecologic Oncology of Canada, which focused on developing a national strategy for tumour and germline *BRCA1/2* testing and genetic counselling in women with ovarian cancer (OC).<sup>1</sup> More recently, the American Society of Clinical Oncology (ASCO) published guidelines for germline and tumour testing in epithelial OCs.<sup>2</sup>

Due to the growing demand across Canadian labs to provide *BRCA1/2* tumour testing, a working group was convened by the CCMG with representation from Canadian Association of Pathologists with the task to develop recommendations for Canadian clinical laboratories performing *BRCA1/2* tumour testing. Recommendations cover the complete testing process of pre-analytical, analytical and post-analytical phases and include consideration of validation and quality assurance for laboratory processes. *BRCA1/2* variant classification and reporting are addressed with consideration of the

somatic and germline overlap inherent in *BRCA1/2* testing of tumour tissue. Given that many Canadian clinical laboratories are experienced with germline *BRCA1/2* testing, these guidelines may serve as a reference for laboratories to adapt existing test methods to assess tumour material and enable the identification of patients with *BRCA1/2* variants that may benefit from PARPi treatment.

This document is not intended to recapitulate previously published guidelines, rather to highlight issues unique within the Canadian healthcare context with respect to *BRCA1/2* tumour testing in OC and specifically high-grade serous carcinoma (HGSC). It was developed by experts in the fields of molecular genetics and pathology from clinical laboratories providing tumour and germline *BRCA1/2* testing. New emerging testing modalities accessing functional measures of homologous recombination deficiency (HRD), which potentially could identify patients sensitive to PARPi treatment are beyond the scope of this guideline, and have been reviewed elsewhere.<sup>3</sup>

## INTRODUCTION

In Canadian women, OC is the second most frequent gynaecological cancer and the fifth leading cause of cancer deaths.<sup>4</sup> The high lethality is, in part, attributed to advanced stages of cancer at initial diagnosis and limited treatment options. The standard of care for advanced OC is surgical cytoreduction and platinum-based chemotherapy.<sup>5</sup> Despite high overall response rates with primary therapies, 70% of women relapse within 3 years.<sup>6</sup>

The strongest risk factor for OC is family history of ovarian or breast cancer with an estimated 20%–30% of epithelial OC related to an inherited predisposition.<sup>1,2</sup> Most hereditary OCs are caused by inherited (germline) disease-causing variants in either the *BRCA1* or *BRCA2* genes, which result in a 39%–63% and 16.5%–27% cumulative lifetime risk for *BRCA1* and *BRCA2* carriers, respectively.<sup>7,8</sup> For OC, it is estimated that germline disease-causing variants in *BRCA1/2* contribute to 15%–20% of cases whereas disease-causing variants in homologous recombination genes such as *RAD51C*, *RAD51D* and *BRIP1* contribute to up to 3% of cases,<sup>1</sup> and disease-causing variants in mismatch repair genes causative for Lynch syndrome (*MLH1*, *MSH2*, *MSH6* and *PMS2*) contribute to 0.5% of cases. HGSC is the most common OC subtype and accounts for up to 70% of all epithelial OC, with the highest frequency of germline *BRCA1/2* disease-causing variants. Women having other OC



© Author(s) (or their employer(s)) 2022. Re-use permitted under CC BY-NC. No commercial re-use. See rights and permissions. Published by BMJ.

**To cite:** Grafodatskaya D, O’Rielly DD, Bedard K, et al. *J Med Genet* Epub ahead of print: [please include Day Month Year]. doi:10.1136/jmedgenet-2021-108238

subtypes (low-grade serous carcinoma, endometrioid carcinoma, clear cell carcinoma) also have an appreciable risk of carrying germline *BRCA1/2* disease-causing variants whereas women with mucinous OC are less likely to be carriers.<sup>9–11</sup> Several guidelines recommend that all women diagnosed with epithelial OC be offered germline genetic testing for *BRCA1/2*, and other OC susceptibility genes, irrespective of their clinical features, age of diagnosis or family cancer history.<sup>2 12 13</sup> In Canada, eligibility criteria for germline genetic testing in OC varies across provinces, with some provinces providing testing for all women with non-mucinous OC but limited in other provinces to women with HGSC.<sup>1</sup>

*BRCA1/2* proteins mediate repair of double-stranded DNA breaks by homologous recombination repair while PARP mediates repair of single-stranded DNA breaks. The presence of a *BRCA1/2* disease-causing variant in a tumour results in HRD. Inhibition of PARP, in combination with HRD, results in cell death due to the accumulation of double-stranded breaks, a phenomenon known as ‘synthetic lethality’.<sup>14</sup> Patients with HRD in tumour tissue due to *BRCA1/2* disease-causing variants are therefore sensitive to medications that inhibit the PARP pathway.<sup>15–17</sup> Sequencing of DNA derived from HGSC tumours has estimated that 15%–20% of tumours carry germline *BRCA1/2* disease-causing variants and approximately 8% of tumours have a somatic (acquired) disease-causing variant.<sup>18 19</sup> Clinical trials have demonstrated that women with either germline or somatic *BRCA1/2* disease-causing variants respond well to PARPi treatment.<sup>15 17 20</sup>

In May 2016, Health Canada approved the use of PARPi for treatment of platinum-sensitive, relapsed *BRCA1/2* mutated (germline or somatic), high-grade serous epithelial ovarian, fallopian or primary peritoneal cancers.<sup>21</sup> Due to the growing need across Canadian labs to provide *BRCA1/2* tumour testing, this current guideline was initiated by a working group of the CCMG with representation from the Canadian Association of Pathologists to provide best practice recommendations for testing of *BRCA1/2* in the context of HGSC.

Definitions and abbreviations related to the content of this guideline are shown in **Box 1**.

### PRE-ANALYTICAL RECOMMENDATIONS

Models of *BRCA1/2* genetic testing ordering for patients with OC are discussed in the paper published by the Canadian BRCA TtoT Community of Practice.<sup>1</sup> *BRCA1/2* tumour testing is routinely ordered by a pathologist or an oncologist. Pathology-driven reflex testing involves *BRCA1/2* ordering by a pathologist for all HGSCs on the appropriate tumour specimen at the time of specimen reporting. As opposed to oncologist ordering, which occurs after the pathology report is received and requires filed slides be pulled and a second pathology review performed to select the appropriate block for testing, reflex testing decreases both the time-to-receipt of the molecular report and pathology department resources.

### Types of specimens for *BRCA1/2* tumour testing

Currently, the most widely used specimen type for *BRCA1/2* tumour testing is formalin-fixed paraffin-embedded (FFPE) tissue; however, cytology specimens are also an option.

#### FFPE specimens

Tissue for *BRCA1/2* tumour testing is most frequently obtained from a surgical resection specimen, or less commonly, from a core biopsy. Surgery (hysterectomy, bilateral salpingo-oophorectomy,

### Box 1 Abbreviations and definitions

**Bioinformatics:** the application of computational and statistical sciences to the collection, organisation and analysis of biological data.

**CNV:** a region that contains gains or losses of genetic material. This may involve a single exon through to several thousands of kilobases of DNA and may be clinically benign, uncertain or pathogenic.

**Disease-causing variant:** a variant with sufficient evidence to classify as pathogenic or likely pathogenic variant according to the germline American College of Medical Genetics and Genomics/Association for Molecular Pathology variant interpretation guidelines.

**FFPE:** formalin-fixed, paraffin embedded.

**Germline variant:** genetic change originating from a gamete (a sperm or an egg), which is present in all (or the majority of) cells of the body; the germline variant could be passed to offspring.

**HGVS:** Human Genome Variation Society.

**HRR (homologous recombination repair):** cellular mechanism to repair double-stranded breaks.

**HRD (homologous recombination deficiency):** a deficiency in HRR.

**LLOD (lower limit of detection):** the lowest variant allele frequency which can be reliably distinguished from sequencing errors.

**MLPA (multiplex ligation-dependent probe amplification):** a molecular technique to detect exon-level CNVs.

**NGS (next-generation sequencing also known as massively parallel sequencing):** high-throughput technologies used to determine nucleotide sequences and genome dosage at numerous loci using a single test, including targeted variant, single gene, targeted gene panels, whole exomes and/or whole genome sequence determination.

**OC (ovarian cancer including ovarian, fallopian tube cancer and primary peritoneal cancers):** the majority of cases of OC are of epithelial origin (~90%), with five main histological subtypes: high-grade serous carcinoma (70%), low-grade serous carcinoma (<5%), endometrioid carcinoma (10%), clear cell carcinoma (CCC) (10%) and mucinous carcinoma (3%).

**PARPi (PARP inhibitor):** poly (ADP-ribose) polymerase (PARP) inhibitor.

**Read depth:** the number of sequence reads at a particular base; each read preferably represents a unique molecule of genomic DNA, although this is dependent on assay design.

**Somatic variant:** a genetic change originating in a somatic cell (not a gamete), and therefore present in only a subset of cells of the body and not passed on to the offspring.

**SNV:** single nucleotide variant.

**Tumour cellularity:** fraction of tumour cells to total number of cells in the specimen.

**VAF (variant allele frequency):** proportion of reads with the variant.

omentectomy and tumour debulking) may be performed prior to chemotherapy or after interval neo-adjuvant chemotherapy. Two recent studies have shown that neoadjuvant therapy does not significantly increase testing failure rates,<sup>22 23</sup> suggesting that these samples are suitable for molecular testing, assuming sufficient quantity of viable tumour cells. Core biopsies may be

**Table 1** Considerations of formalin-fixed paraffin-embedded tissue selection and processing for *BRCA1/2* tumour testing

Tissue type	
Surgical resection	
Core biopsy	At least two core biopsies should be obtained, if possible, and placed in separate cassettes. One tissue core can be dedicated for molecular testing, without being potentially depleted if additional tests such as immunohistochemistry need to be performed.
<b>Ischaemic and fixation times</b>	
Modified from 2019 Pre-analytics for Precision Medicine Project Team of the College of American Pathologists	
Cold ischaemic time: <1 hour	Refers to the time, at room temperature, from removal of specimen from the patient to the placement of tissue into formalin.
<b>Fixation</b>	
Fixative: 10% phosphate-buffered formalin	
Minimum fixation time: 6 hours if at room temperature	For specimens placed in formalin and subsequently refrigerated at below 25°C, fixation is slowed and fixation time may need to be adjusted.
Maximum fixation time: 24–36 hours for non-fatty tissue at room temperature; 48 hours for tissue with high fat content	
<b>Tissue submission for <i>BRCA1/2</i> testing</b>	
<b>Pathologist</b>	
Confirms tumour diagnosis.	More than one block may occasionally be needed if tumour is scarce.
Chooses a tissue block for testing that has the largest amount of viable tumour, while avoiding/minimising areas of tumour necrosis and inflammation, and avoiding, if possible, selecting multiple small areas of tumour.	The site from which the tumour is chosen, such as ovary or omentum, does not impact <i>BRCA1/2</i> testing.
Orders recut H&E and unstained slides.	
Marks tumour area(s) on recut H&E for macrodissection or microdissection in the molecular laboratory. Documents percentage viable tumour in marked areas.	
<b>Histology laboratory</b>	
Cuts one H&E and unstained slides.	Tissue orientation should be same on all the slides, as this will aid the molecular laboratory in successfully identifying the tumour area(s) for dissection.
The number of unstained slides and section thickness should follow the local laboratory protocol.	May consist of 5x 10 µm sections or, if tissue is scant, of 10x 5 µm sections.
Uses clean technique compatible with downstream molecular testing to cut and package the unstained sections.	Change gloves and replace knife blades between blocks from different patients. Use disposable tools.

performed if the diagnosis of OC is uncertain or if the patient is too unwell to have surgery.

An appropriately trained pathologist should confirm the diagnosis and choose the tissue block for testing.<sup>24 25</sup> The pathologist should consider both quantity and quality of the tumour tissue (table 1). The tissue can be from the ovary or other sites such as fallopian tube, omentum or peritoneum.<sup>22 23</sup> While age of the tissue block could potentially negatively impact quantity and quality of DNA, several studies have shown that blocks as old as 12 years can be successfully used for next-generation sequencing (NGS) analysis.<sup>22 26</sup> Therefore, age of the tissue block should not be a deterrent to testing. The pathologist orders one H&E and multiple unstained slides, marks areas for dissection and documents percentage of viable tumour in the marked area (figure 1). The number of unstained slides and section thickness should follow local laboratory protocol, but may, for example, consist of 5x 10 µm sections or if tissue is scant, 10x 5 µm sections. Cutting and packaging the unstained sections should use techniques that avoid specimen cross-contamination (table 1).<sup>27</sup>

Pre-analytical considerations are especially important when performing molecular tests from fixed tissues but are not specific for *BRCA1/2* testing.<sup>28</sup> Molecular integrity and molecular test results may be impacted by various factors, including cold ischaemic time, fixative, minimum and maximum fixation times, processing and storage. Pathology laboratories should have standard procedures for tissue preservation in place. General recommendations for surgical pathology specimens have been

published, most recently by the 2019 Pre-analytics for Precision Medicine Project Team of the College of American Pathologists (CAP) and may be considered (table 1).<sup>28</sup>

### Cytology specimens

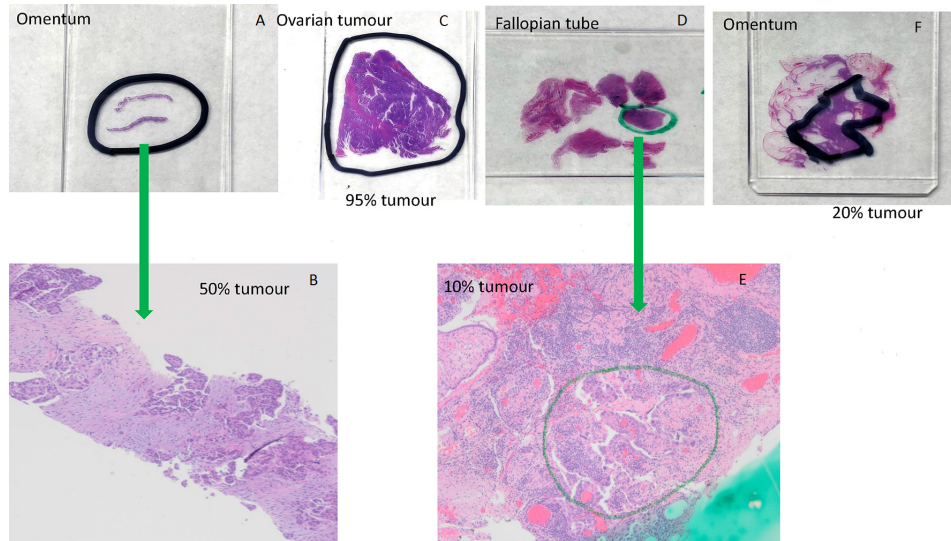
Cytology samples are well-established as suitable specimens for NGS studies.<sup>29</sup> Cytological specimen preparations can be processed in a variety of formats including direct smears, cytopins, cell blocks (formalin and alcohol fixed) and liquid based cytology.<sup>30</sup> If cytology specimens are collected in non-formalin-based fixative, they offer advantages over formalin-fixed specimens in terms of the quality of nucleic acids extracted.<sup>30</sup> Several studies have shown high concordance between FFPE and non-formalin fixed cytology specimens (ascites fluid, pleural effusions, fine needle aspiration) for *BRCA1/2* testing.<sup>31–33</sup> If the laboratory intends to perform testing on cytology specimens which are processed differently than FFPE cell blocks, this sample type should be included in the validation.

### Tumour cellularity requirements

#### Recommendation 1

The percentage of viable tumour should be documented by the pathologist and provided to the laboratory performing molecular testing. Molecular laboratories should establish criteria for acceptance of the specimens for testing based on tumour content.





**Figure 1** Examples of marking tumour area for dissection and estimation percent of tumour using H&E-stained sections. (A) Omentum; (B) omentum, 40× magnification, 50% tumour cellularity. High-grade serous carcinoma with solid nests and papillary-like clusters of malignant cells within a reactive fibroblastic stroma; (C) ovarian tumour, 95% tumour cellularity. Almost entirely high-grade serous carcinoma with papillary structures and slit-like spaces, with a small focus of background non-neoplastic fibrous tissue; (D) fallopian tube; (E) fallopian tube, 40× magnification, 10% tumour cellularity. Minute focus of residual high-grade serous carcinoma postinterval neoadjuvant chemotherapy, rimming papillary stromal cores. Approximately 20% cellularity in the circled area, within a background of reactive fibroblastic proliferation and chronic inflammatory cells; (F) omentum, 20% tumour cellularity.

Minimum tumour cellularity acceptable for testing is based on the validated lower limit of detection (LLOD) for the specific NGS assay being used by a laboratory. LLOD may differ depending on variant but is typically 5%–10% for single nucleotide variants (SNVs) and small insertions/deletions, which require 2 times higher tumour fraction of 10%–20% to detect monoallelic variants.<sup>30</sup> Copy number assessment from NGS data may require higher tumour cellularity. Acceptance criteria for tumour fraction could vary between laboratories based on their established LLOD and local policies.

General considerations for DNA requirements for NGS of solid tumours are outlined in Association for Molecular Pathology (AMP) and the CAP recommendations for validation of oncology panels<sup>34</sup> and are also applicable for somatic *BRCA1/2* testing.

### Analytical recommendations

The analytical aspects of testing for *BRCA1/2* variants in tumours are similar to testing of other tumour tissue performed to detect somatic variants. The NGS methods as described in the CCMG laboratory practice guideline for NGS<sup>35</sup> would also apply to *BRCA1/2* tumour testing. In addition, the AMP/CAP recommendations for validation of oncology panels<sup>34</sup> and bioinformatics pipelines in tumour testing,<sup>36</sup> can serve as a guide for laboratories when validating NGS panels for somatic *BRCA1/2* variant detection.

Validation of NGS panel for detection of *BRCA1/2* variants in tumour tissue

#### Recommendation 2

Laboratories should validate the analytical protocol and bioinformatics pipeline specifically for tumour tissue and all relevant types of *BRCA1/2* variants important in HGSC (substitutions, deletions, insertions, complex indels and CNVs). LLOD for variant allele frequency (VAF) of sequence variants should be at least 10%.

A consideration in tumour testing for *BRCA1/2* is the design of the NGS panel. A panel of the two *BRCA* genes could be used; however, as laboratories must have the ability to call CNVs from NGS data, this may be improved by panels covering more genomic regions, such as the introns of the *BRCA1/2* genes or additional genes relevant in OC.

Laboratories that are adapting existing NGS methods for germline testing to DNA extracted from tumour tissue should consider the following additional analytical validation aspects: LLOD, the linearity of the assay (ie, the accuracy of the VAF across the range of variants that will be reported) and interfering substances (ie, the use of DNA extracted from tumour tissue using extraction methods appropriate to those tissue types). If an enrichment-based protocol is used for library preparation, modifications of the protocol for genomic DNA fragmentation prior to library preparation should be considered to account for degradation levels of FFPE DNA samples. DNA from FFPE tissue may contain formalin-fixation generated artefacts, resulting in low-level false positive variant calls. Laboratories should develop strategies to differentiate between potential artefacts and true positive variants such as molecular barcoding for amplicon-based panels.<sup>34 35</sup>

Given the potential need to test *BRCA1/2* from both germline and tumour tissue sources, laboratories should consider the best way to pool samples, with the use of barcodes to allow for separation of reads by sample in the bioinformatics analysis phase. Laboratories, that are licensed/accredited to perform both germline and tumour testing, might consider batching tumour (FFPE) and germline (peripheral blood) specimens together if the technology is validated for both types of samples. A key aspect in determining the batch sizes is knowing the number of reads required for each sample to achieve the validated LLOD, which may differ between tumour and germline samples. As the minimum required coverage could vary depending on type of panel, sequencing method and type of variant, the minimum read depth required for a desired LLOD for both sequence and CNVs should be established during validation.

## CNV analysis

**Recommendation 3**

Laboratories should perform CNV analysis for *BRCA1/2* on DNA extracted from tumour tissue. LLOD for CNVs should be at minimum similar to germline heterozygous CNVs (VAF of 50%).

CNV detection using NGS is a particularly challenging aspect of *BRCA1/2* tumour testing. Given that exon-level copy number changes account for approximately 10% of all *BRCA1/2* inherited disease-causing variants,<sup>7</sup> testing *BRCA1/2* in tumour tissue should also allow for CNV assessment. When analysing copy number, the most common approach is assessment of sequencing read depth with the assumption that it is proportional to the number of copies of each assessed genomic region. This usually involves comparing each assessed genomic region with other regions within the same sample (intra-sample normalisation) and comparison to a standard (or a pool of samples) with normal copy number (inter-sample normalisation).<sup>37,38</sup> This is technically challenging for DNA extracted from genomically unstable tumours. In addition, shorter fragments of FFPE DNA can negatively impact uniformity of coverage, resulting in false positive or false negative results.

Although each laboratory should establish and validate their own pipeline, the use of more than one CNV-calling bioinformatics tool, with the intersection of the positive CNV calls from different callers potentially indicating higher-quality data, may be considered. Some laboratories may also choose to use methods other than NGS to detect CNVs in tumour tissue such as multiplex ligation-dependent probe amplification (MLPA) and/or confirm selected CNVs identified by NGS

by an alternative method such as MLPA or qPCR, depending on CNV size threshold defined by laboratory. In all cases, the typical validation parameters would apply to CNV detection (eg, LLOD). Limitations of the chosen assay to detect CNVs must be understood, including the size of CNV and sequence context such as GC-rich regions, as well as reference regions available for normalisation. NGS has an advantage over MLPA as it has more genomic regions which could be used for intra-sample normalisation, and therefore normalisation and copy number calls would be less impacted by possible genomic instability present in tumour. Due to challenges with copy analyses in tumour tissues, the LLOD for CNVs is likely to be higher than the LLOD for sequence variants.

**Post-analytical recommendations****Variant classification**

This section focuses on consideration of *BRCA1/2* variant classification in the tumour context. A significant issue in *BRCA1/2* tumour testing for HGSC is the identification of variants that may be either somatic (acquired) variants limited to the tumour, or germline variants that appear in all cells. As a result, the annotation of variants identified in tumour tissue and classification of variants in the context of potential treatment and eligibility for PARPi or hereditary risk is complex. In this section, we propose recommendations to manage variant assessment with both the somatic and germline context in mind. Electronic resources helpful in *BRCA1/2* variant assessment are provided (table 2).

**Table 2** Resources relevant for *BRCA1/2* variant assessment/classification

Utility/Function	Database/Resources	Web address/References
<b>Population databases</b>	Genome Aggregation Database	<a href="https://gnomad.broadinstitute.org/">https://gnomad.broadinstitute.org/</a>
<b>Variant databases as related to disease phenotypes</b>	ClinVar	<a href="http://www.ncbi.nlm.nih.gov/clinvar/">http://www.ncbi.nlm.nih.gov/clinvar/</a>
	ARUP database	<a href="http://arup.utah.edu/database">http://arup.utah.edu/database</a>
	Leiden Open Variation Database (LOVD)	<a href="https://www.lovd.nl/">https://www.lovd.nl/</a>
	Canadian Open Genetics Repository	<a href="http://opengenetics.ca/">http://opengenetics.ca/</a>
	Catalog of Somatic Mutations in Cancer (COSMIC)	<a href="https://cancer.sanger.ac.uk/cosmic">https://cancer.sanger.ac.uk/cosmic</a>
	OncoKB (Precision Oncology Knowledge Base)	<a href="https://www.oncokb.org/">https://www.oncokb.org/</a>
	Nextprot Cancer Variants portal	<a href="https://www.nextprot.org/portals/cancer-variants">https://www.nextprot.org/portals/cancer-variants</a> PMID: 29996917
<b><i>BRCA1/2</i>-specific resources</b>	NHGRI Breast Cancer Information Core (BIC)	<a href="https://research.nhgri.nih.gov/bic/">https://research.nhgri.nih.gov/bic/</a>
	The BRCA Share Database (UMD)	<a href="http://www.umd.be/BRCA1/">http://www.umd.be/BRCA1/</a> ; <a href="http://www.umd.be/BRCA2/">http://www.umd.be/BRCA2/</a>
	BRCA Exchange	<a href="https://brcaexchange.org/">https://brcaexchange.org/</a>
	Evidence-based Network for the Interpretation of Germline Mutant Alleles (ENIGMA)	<a href="https://enigmaconsortium.org/">https://enigmaconsortium.org/</a> PMID: 31131967 (supplementary data)
	A database of functional classifications of <i>BRCA1</i> variants based on Saturation Genome Editing	<a href="https://sge.gs.washington.edu/BRCA1/">https://sge.gs.washington.edu/BRCA1/</a> PMID: 29394989
	Assessment of the clinical relevance of <i>BRCA2</i> Missense Variants by functional and computational approaches	PMID: 29394989
	High-throughput functional evaluation of <i>BRCA2</i> variants of unknown significance	PMID: 32444794
<b>ClinGen Sequence and CNVs interpretation resources</b>	Recommendations for interpreting the loss of function PVS1 ACMG/AMP variant criteria	PMID: 30192042
	Recommendations for application of the functional evidence P53/BS3 criterion	PMID: 31892348
	Recommendation for benign stand-alone ACMG/AMP criterion BA1	PMID: 30311383
	Recommendation for reputable source PP5 and BP6 ACMG/AMP criteria	PMID: 29543229
	Technical standards for the interpretation and reporting of constitutional CNVs: a joint consensus recommendation of the ACMG and the Clinical Genome Resource (ClinGen)	PMID: 31690835
	Additional recommendations (not published in peer-reviewed journals)	<a href="https://www.clinicalgenome.org/working-groups/sequence-variant-interpretation/">https://www.clinicalgenome.org/working-groups/sequence-variant-interpretation/</a>

ACMG, American College of Medical Genetics and Genomics; AMP, Association for Molecular Pathology.

#### Recommendation 4

The American College of Medical Genetics and Genomics (ACMG)/AMP germline variant pathogenicity scheme criteria<sup>39</sup> should be used to determine whether a variant has impact on *BRCA1/2* protein function. A 'pathogenic/likely pathogenic' classification would be equivalent to 'deleterious/suspected deleterious' variants with impact on protein function, which should be reported as 'clinically actionable' for PARPi sensitivity.

Deleterious genetic variants in *BRCA1/2* that affect protein function include truncating variants (frameshift and nonsense), splice site variants, missense and synonymous variants, as well as exon-level CNVs, with these variant types distributed across most exons. In the germline context, deleterious variants predispose to cancer development. In the somatic context, clinical trials for both relapsed and newly diagnosed OC cite presence of deleterious, predicted deleterious or suspected deleterious *BRCA1/2* variants (somatic or germline) is associated with increased sensitivity to PARPi treatment.<sup>15-17</sup>

In Canada, the ACMG/AMP guidelines for sequence variant classification in Mendelian disorders<sup>39</sup> is endorsed by the CCMG for use in germline variant reporting.<sup>40</sup> Certain combinations of criteria must be met to achieve the classification of pathogenic, likely pathogenic, benign or likely benign. If sufficient criteria are not met for these four categories, variants are classified as uncertain. To expand on the ACMG/AMP guidelines, the ClinGen Sequence Variant Interpretation Working Group has developed additional recommendations to refine of ACMG/AMP classification criteria (table 2).

In the somatic context, the implementation of NGS testing of tumour tissue to identify variants relevant to cancer diagnosis, prognosis and treatment has necessitated the development of guidelines and recommendations specific for this purpose.<sup>41-43</sup> The guidelines share the commonality of assigning variants to different tiers or levels of significance depending on the available clinical and experimental evidence. In addition, somatic guidelines may consider the type of tumour in which the variant was identified. While the CCMG has not yet endorsed a specific somatic variant scheme, a recent publication indicated that 47% of Canadian laboratories use the AMP/ASCO/CAP somatic guidelines,<sup>42</sup> 36% use other published schemes (either alone or in addition to the AMP/ASCO/CAP guideline) and 18% use an in-house developed scheme.<sup>44</sup>

#### Recommendation 5

Intragenic CNVs should be assessed the same way as sequence variants (see 'Recommendation 4' section). Presence of whole gene CNVs should be mentioned on the report with recommendation for follow-up germline testing, but without classification as clinically actionable due to the paucity of data for PARPi sensitivity for whole gene deletions/duplications.

CNVs account for approximately 10% of all germline *BRCA1/2* disease-causing variants in hereditary breast cancer and OC and can be either intragenic (single to multi-exon) or encompass the entire gene.<sup>7</sup> Intragenic CNVs depending on length and location, may or may not disrupt the open reading frame of the protein, cause nonsense-mediated decay or delete important functional domain. For CNVs shown to be intragenic, ClinGen recommendations for interpreting the loss of function variants<sup>45</sup> should be used to assess the predicted impact of the CNV on the protein function.

HGSC has the highest ratio of somatic CNVs to SNVs compared with other major cancer types.<sup>19,46</sup> Systematic genomic analyses of 489 HGSC samples by The Cancer Genome Atlas

has revealed a high level of genomic instability with a complex pattern of gains and losses including losses of chromosome arms 13q and 17q where *BRCA2* and *BRCA1* are located among recurrent CNVs.<sup>19</sup> This makes the classification of deletions encompassing the entire *BRCA1* or *BRCA2* gene detected in tumour more challenging because these CNVs exist in the context of the genomically unstable tumour, and it is often unclear whether an identified deletion represents a secondary alteration with the second *BRCA1/2* allele intact or not. In addition, targeted NGS approaches are usually limited to specific genes and do not provide information regarding the size of the identified deletions if the breakpoints are outside of the assayed regions.

Although, somatic *BRCA1/2* deletions have been well documented as a mechanism for inactivating the normal allele in patients with a heterozygous germline variant,<sup>47,48</sup> information about the implication of somatic CNVs on the sensitivity to PARPi is limited. Most of the clinical trials assessing PARPi sensitivity group all *BRCA1/2* disease-causing variants together without specifying variant type.<sup>15-17</sup>

As the current testing paradigms are focused on assessing *BRCA1/2* only, when a whole gene deletion is identified, it is unknown whether it extends beyond the assayed regions and how much chromosomal material is involved. It is logical to assume that a biallelic deletion of *BRCA1* or *BRCA2* results in loss of expression of the deleted gene, which should lead to increased PARPi sensitivity. However, in the context of a monoallelic deletion found in tumour testing in the absence of a clinically significant sequence variant, it is unclear whether there is a second hit present resulting in inactivation of the wild-type allele by another mechanism (e.g. epigenetic silencing). In addition, contamination with non-tumour cells and tumour heterogeneity can obscure distinction between monoallelic and biallelic deletions. Due to the high frequency of 13q and 17q whole arm somatic deletions in HGSC, it is unlikely that all *BRCA1/2* whole gene deletions detected by targeted NGS panels in the tumour would be associated with PARPi sensitivity; however, there is no method suitable for assessing this in clinical laboratories.

Currently, no recommendation can be made with regard to classification of whole gene deletions detected in tumour. As more studies emerge, new evidence on how PARPi response is modulated by different CNVs in HGSC will support the clinical interpretation. We recommend that laboratories report all CNVs detected in tumour tissue. Intragenic CNVs should be assessed and classified similarly as sequence variants using ACMG/AMP germline scheme criteria.<sup>39</sup> For whole gene deletions, the report should include a statement regarding the current lack of data supporting PARPi sensitivity. Like SNVs, it is not possible to determine from tumour testing alone if a whole gene deletion is somatic or germline, and follow-up germline testing should be recommended for any CNV identified. If a whole gene deletion is proven to be germline, it should be classified as pathogenic in the germline context and clinically actionable in the context of PARPi sensitivity. The whole gene duplications should be classified as uncertain, as they are not predicted to disrupt the open reading frame.<sup>45,49</sup>

Copy neutral loss of heterozygosity (LOH) is a common class of genomic alteration observed in multiple cancers and occurs due to heterozygous loss of a whole chromosome or chromosomal region with a concurrent gain of a homologous region from another allele. LOH of the non-mutated (wild-type) allele at the *BRCA1/2* locus is a common second hit mechanism in ovarian tumours leading to deficiency in *BRCA1/2* gene function.<sup>50</sup> In addition, *BRCA1/2* deficiency is known to be associated with LOH at multiple genomic regions, as a part of HRD



signature.<sup>51</sup> Clinical trials have shown that PARPi could be efficacious in HGSC with wild-type *BRCA1/2* and a high level of LOH.<sup>16 52</sup> However, ASCO guidelines consider the amount of evidence insufficient to support routine testing of genome-wide LOH.<sup>2</sup> *BRCA1/2* have several benign SNVs which in conjunction with copy number analysis could potentially be used to infer the presence of copy neutral LOH. In the absence of disease-causing variants and without knowledge of genome-wide LOH status, LOH identified only at *BRCA1/2* genes currently has limited clinical utility, and there is no recommendation to report this type of genomic alteration.

### Reversion variants

Reversion variants can occasionally be detected in relapsed tumours, and less frequently in primary tumour.<sup>53</sup> These secondary reversion variants may restore protein function (full or partial) either through introduction of a new variant restoring the open reading frame or by reverting to the wild-type sequence. Although there are several caveats including the ratio of cells with the reversion variant to the original variant in the tumour and the degree to which protein function is recovered, some studies suggest that presence of a secondary reversion variant could be associated with chemotherapy and PARPi resistance.<sup>53 54</sup> However, due to the heterogeneity of the impact of reversion variants, the ASCO guideline suggests that presence of reversion variants currently does not have direct therapeutic implications.<sup>2</sup>

### Reporting

The following guidelines describe elements of the clinical report that are necessary to specify the identity of a *BRCA1/2* variant and clearly communicate the clinical significance of the result in the context of patient selection for PARPi therapy. Report examples are provided in online supplemental appendix 1.

#### Variant reporting

##### *Recommendation 6*

Clinically actionable *BRCA1/2* variants and variants of uncertain clinical significance should be reported in distinct sections of the report to avoid misinterpretation.

##### *Recommendation 7*

*BRCA1/2* variants identified in tumour tissue should be reported using 'clinically actionable' terminology, and not using germline terminology (ie, pathogenic/likely pathogenic) to avoid misinterpretation of the variant as germline and emphasise the impact of the variant on sensitivity to targeted therapy in accordance with AMP/ASCO/CAP guideline for somatic variant classification.<sup>42</sup>

The laboratory report should include a description of the criteria used to review the data and the criteria used for inclusion of a variant in the report with reference to the scheme used for variant annotation/classification. Clinically actionable variants and variants of uncertain clinical significance should be included allowing correlation with germline findings when appropriate. However, clinically actionable *BRCA1/2* variants should be reported in a place of prominence. While variants of uncertain clinical significance should be listed, they should be physically separated in a clearly labelled section away from the clinically actionable variants to eliminate the possibility of using these uncertain variants for treatment selection purposes. Benign and likely benign variants should be excluded from the report but should be available on request of clinicians.

While loss-of-function is frequently assessed using germline interpretation criteria,<sup>39</sup> the use of the terms pathogenic or likely pathogenic may result in the misinterpretation of the variant as being germline; therefore, it is recommended that the labels 'pathogenic' or 'likely pathogenic' be avoided.

Variants should be described using standard Human Genome Variation Society (HGVS) nomenclature, including the reference transcript used, with nucleotide (c.) and protein (p.) descriptions. To support assessment of analytic validity of the reported variant, variant frequency and depth of coverage can also be included.

In the context of tumour testing, average and minimum depth-of-coverage are important variables in understanding the variants detected, or lack thereof. The technical variables (average and minimum depth of coverage, LLOD, sensitivity and limitations of the assay) should be reported in a manner that is appropriate for the assay. If a sample does not meet laboratory established acceptable quality metrics for reporting, an inconclusive report should be issued with a recommendation to repeat testing using an alternate specimen if available. Tumour cellularity is also important to ensure that a result is not a false negative due to minimal tumour in the sample, and labs should accept material that meets their minimal tumour content requirement. An inconclusive report may be issued in cases where the tumour percentage is approaching the LLOD of the test, in accordance with local policies. In these cases, variants may be present but below the threshold of detection. The report should suggest repeat testing on another sample with greater percentage of neoplastic cells if available.

#### Implication of variants detected in tumour on germline inheritance

##### *Recommendation 8*

When tumour-only testing is performed, the report should clearly state that the origin of the variant cannot be determined as somatic or germline with certainty. The report should recommend follow-up genetic counselling and discussion of germline testing.

Parallel testing of a blood sample along with a tissue sample will allow identification of variants as either germline or somatic. However, different sites within Canada have different local protocols with regard to timing of tumour and germline testing. When tumour-only testing is undertaken, it is unclear that a variant is present in the germline or only in the tumour. It is recommended that it be clearly stated that in the absence of germline testing, variants cannot be determined to be of somatic or germline origin. In the absence of parallel germline testing, the report should include a recommendation to pursue genetic counselling and germline testing to examine genes other than *BRCA1/2* implicated in hereditary OCs and to eliminate the possibility that LOH or reversion may have prevented the detection of germline *BRCA1/2* variants in tumour tissue. Recommendation for genetic counselling prior to undertaking germline testing should also be included in the report ensuring patients are aware of the implications of germline findings for cancer risk for them and their family members.

#### Clinical significance

##### *Recommendation 9*

It is recommended that there be a clear statement of potential for response to PARPi therapy.

Each report should be accompanied by a clear statement of clinical significance regarding the patient's likelihood of response to PARPi therapy.

- ▶ If a loss-of-function *BRCA1/2* variant is detected, a statement such as, ‘The presence of this loss-of-function *BRCA1/2* variant can be associated with a favourable response to PARP inhibitors treatment’ should be included.
- ▶ If no clinically actionable *BRCA1/2* variant is detected, a statement such as, ‘The absence of a clinically actionable *BRCA1/2* variant can be associated with a less favourable response to PARP inhibitors treatment’, should be included.

### Quality assurance

#### Recommendation 10

Laboratories should participate in external quality assessment specific for *BRCA1/2* tumour testing from FFPE tissue and reporting of *BRCA1/2* variants in HGSC.

Quality assessment programmes for *BRCA1/2* tumour testing are available from accredited European external Quality Assessment (EQA) providers (The European Molecular Genetics Network and Genomics Quality Assessment). To our knowledge, there are currently no North American tumour *BRCA1/2* EQA; however, there is possibility that somatic *BRCA1/2* EQA could be offered through the Canadian Biomarker Quality Assurance programme in the future. Laboratories should participate in either one of the certified EQAs or engage in a sample exchange programme with other clinical laboratories in Canada according to their provincial laboratory accreditation programmes. As there are a number pre-analytical, analytical and post-analytical differences in assessing *BRCA1/2* variants in tumour compared with germline, the samples for this EQA should originate from tumour FFPE material; germline *BRCA1/2* EQA schemes are insufficient for tumour testing.

There are also EQA schemes available focusing specifically on variant classification including *BRCA1/2*. Canadian laboratories are encouraged to participate in these proficiency testing schemes to assess competence in *BRCA1/2* variant classification. In addition, laboratories are encouraged to contribute to national and international databases of variants with the aim to improve and standardise variant classification.

### CONCLUSIONS

This guideline presents recommendations for *BRCA1/2* tumour testing in Canadian clinical laboratories. The guideline encompasses pre-analytical, analytical, post-analytical and reporting aspects of *BRCA1/2* testing in ovarian tumours. The aim of this guideline is to provide national standards for clinical laboratories that are providing *BRCA1/2* ovarian tumour testing. We also envision that these recommendations could be useful to Canadian laboratory accreditation bodies developing NGS standards for *BRCA1/2* tumour testing. We also recognise that personalised genome medicine is a fast-evolving field and that soon, testing for additional genes will likely become relevant in OC in the context of PARPi sensitivity, and that PARPi treatment could be approved in additional tumour types. The key aspects of this guideline could be applied to both scenarios.

#### Author affiliations

<sup>1</sup>Department of Pathology and Molecular Medicine, McMaster University, Hamilton, Ontario, Canada

<sup>2</sup>Hamilton Regional Laboratory Medicine Program, Hamilton Health Sciences, Hamilton, Ontario, Canada

<sup>3</sup>Division of BioMedical Sciences, Faculty of Medicine, Memorial University of Newfoundland, St. John's, Newfoundland, Canada

<sup>4</sup>Centre for Translational Genomes & Division of Genetics, Eastern Regional Health Authority, St. John's, Newfoundland, Canada

<sup>5</sup>Département de Pathologie et Biologie cellulaire, Université de Montréal, Montréal, Québec, Canada

<sup>6</sup>Laboratoire de Diagnostic Moléculaire, Centre hospitalier de l'Université de Montréal, Montréal, Québec, Canada

<sup>7</sup>Department of Pathology and Laboratory Medicine, Schulich School of Medicine & Dentistry, Western University, London, Ontario, Canada

<sup>8</sup>Department of Medical Genetics, Alberta Children's Hospital Research Institute for Child and Maternal Health, Cumming School of Medicine, University of Calgary, Calgary, Alberta, Canada

<sup>9</sup>Genetics and Genomics, Alberta Precision Laboratories, Calgary, Alberta, Canada

<sup>10</sup>Genomics, Diagnostic Services, Shared Health Manitoba, Winnipeg, Manitoba, Canada

<sup>11</sup>Department of Biochemistry and Medical Genetics, Max Rady College of Medicine, Rady Faculty of Health Sciences, University of Manitoba, Winnipeg, Manitoba, Canada

<sup>12</sup>Laboratory Medicine and Genetics, Trillium Health Partners, Mississauga, Ontario, Canada

<sup>13</sup>Department of Laboratory Medicine and Pathobiology, University of Toronto, Toronto, Ontario, Canada

<sup>14</sup>Department of Clinical Laboratory Genetics, Laboratory Medicine Program, University Health Network, Toronto, Ontario, Canada

**Acknowledgements** The authors would like to thank the CCMG Board of Directors and CCMG members who reviewed the document and provided useful comments. The authors would also like to thank the CCMG for providing administrative support for document circulation among the membership.

**Contributors** DG, DDO'R and TLS conceived the project, assembled the Ad Hoc Working Group and coordinated the group activities. DG, DDO'R, KB, DTB, CJH, AL, EMcC, JP, ELS, AKV and TLS contributed to document planning, participated in discussions and wrote and reviewed document content. DG, DDO'R and TLS also reviewed comments from the CCMG membership, made revisions based on comments and performed an overall edit of the final document. All authors provided approval of the final version of the document.

**Funding** The authors have not declared a specific grant for this research from any funding agency in the public, commercial or not-for-profit sectors.

**Competing interests** DG and EMcC are principal investigators on the research grant funded by AstraZeneca. Funding was received by Hamilton Regional Laboratory Program. ELS's institution (Shared Health) has received funding for test development from AstraZeneca, Shared Health Manitoba and CancerCare Manitoba Foundation. KB's institution (Laboratoire de Diagnostic Moléculaire, Centre hospitalier de l'Université de Montréal) has received funding for test development from AstraZeneca. TLS has received grant for test development and honoraria for advisory boards related to ovarian cancer/ PARP inhibitors from AstraZeneca. AKV has received funding for test development and support for attending meeting/travel from AstraZeneca.

**Patient consent for publication** Not applicable.

**Ethics approval** Not applicable.

**Provenance and peer review** Not commissioned; externally peer reviewed.

**Supplemental material** This content has been supplied by the author(s). It has not been vetted by BMJ Publishing Group Limited (BMJ) and may not have been peer-reviewed. Any opinions or recommendations discussed are solely those of the author(s) and are not endorsed by BMJ. BMJ disclaims all liability and responsibility arising from any reliance placed on the content. Where the content includes any translated material, BMJ does not warrant the accuracy and reliability of the translations (including but not limited to local regulations, clinical guidelines, terminology, drug names and drug dosages), and is not responsible for any error and/or omissions arising from translation and adaptation or otherwise.

**Open access** This is an open access article distributed in accordance with the Creative Commons Attribution Non Commercial (CC BY-NC 4.0) license, which permits others to distribute, remix, adapt, build upon this work non-commercially, and license their derivative works on different terms, provided the original work is properly cited, appropriate credit is given, any changes made indicated, and the use is non-commercial. See: <http://creativecommons.org/licenses/by-nc/4.0/>.

#### ORCID iDs

Daria Grafodatskaya <http://orcid.org/0000-0002-4246-7675>

Tracy L Stockley <http://orcid.org/0000-0002-4476-9722>

### REFERENCES

- 1 McCuaig JM, Stockley TL, Shaw P, Fung-Kee-Fung M, Altman AD, Bentley J, Bernardini MQ, Cormier B, Hirte H, Kieser K, MacMillan A, Meschino WS, Panabaker K, Perrier R, Provencher D, Schrader KA, Serfas K, Tomiak E, Wong N, Young SS, Gotlieb WH, Hoskins P, Kim RH, BCo P, BRCA TtoT Community of Practice. Evolution of genetic assessment for BRCA-associated gynaecologic malignancies: a Canadian multisociety roadmap. *J Med Genet* 2018;55:571–7.



- 2 Konstantinopoulos PA, Lacchetti C, Annunziata CM. Germline and somatic tumor testing in epithelial ovarian cancer: ASCO guideline summary. *JCO Oncol Pract* 2020;16:e835–8.
- 3 Ngoi NYL, Tan DSP. The role of homologous recombination deficiency testing in ovarian cancer and its clinical implications: do we need it? *ESMO Open* 2021;6.
- 4 Brenner DR, Weir HK, Demers AA, Ellison LF, Louzaco C, Shaw A, Turner D, Woods RR, Smith LM, Canadian Cancer Statistics Advisory Committee. Projected estimates of cancer in Canada in 2020. *CMAJ* 2020;192:E199–205.
- 5 Armstrong DK, Alvarez RD, Bakkum-Gamez JN, Barroilhet L, Behbakht K, Berchuck A, Berek JS, Chen L-M, Cristea M, DeRosa M, ElNaggar AC, Gershenson DM, Gray HJ, Hakam A, Jain A, Johnston C, Leath CA, Liu J, Mahdi H, Matei D, McHale M, McLean K, O'Malley DM, Penson RT, Percac-Lima S, Ratner E, Remmenga SW, Sabbatini P, Werner TL, Zsiros E, Burns JL, Eng H. NCCN guidelines insights: ovarian cancer, version 1.2019. *J Natl Compr Canc Netw* 2019;17:896–909.
- 6 Ledermann JA, Raja FA, Fotopoulou C, Gonzalez-Martin A, Colombo N, Sessa C, Group EGW. Corrections to “Newly diagnosed and relapsed epithelial ovarian carcinoma: ESMO Clinical Practice Guidelines for diagnosis, treatment and follow-up”. *Annals of Oncology* 2018;29.
- 7 Petrucelli N, Daly MB, Pal T. BRCA1- and BRCA2-Associated Hereditary Breast and Ovarian Cancer. In: *GeneReviews(R)*. Seattle WA, 1993.
- 8 Kuchenbaecker KB, Hopper JL, Barnes DR, Phillips K-A, Mooij TM, Roos-Blom M-J, Jervis S, van Leeuwen FE, Milne RL, Andrieu N, Goldgar DE, Terry MB, Rookus MA, Easton DF, Antoniou AC, McGuffog L, Evans DG, Barrowdale D, Frost D, Adlard J, Ong K-R, Izatt L, Tischkowitz M, Eeles R, Davidson R, Hodgson S, Ellis S, Nogues C, Lasset C, Stoppa-Lyonnet D, Fricker J-P, Faivre L, Berthet P, Hooning MJ, van der Kolk LE, Kets CM, Adank MA, John EM, Chung WK, Andrulis IL, Southey M, Daly MB, Buys SS, Osorio A, Engel C, Kast K, Schmutzler RK, Caldes T, Jakubowska A, Simard J, Friedlander ML, McLachlan S-A, Machackova E, Foretova L, Tan YY, Singer CF, Olah E, Gerdes A-M, Arver B, Olsson H, BRCA1 and BRCA2 Cohort Consortium. Risks of breast, ovarian, and contralateral breast cancer for BRCA1 and BRCA2 mutation carriers. *JAMA* 2017;317:2402–16.
- 9 Pennington KP, Walsh T, Harrell MI, Lee MK, Pennil CC, Rendi MH, Thornton A, Norquist BM, Casadei S, Nord AS, Agnew KJ, Pritchard CC, Scroggins S, Garcia RL, King M-C, Swisher EM. Germline and somatic mutations in homologous recombination genes predict platinum response and survival in ovarian, fallopian tube, and peritoneal carcinomas. *Clin Cancer Res* 2014;20:764–75.
- 10 Zhang S, Royer R, Li S, McLaughlin JR, Rosen B, Risch HA, Fan I, Bradley L, Shaw PA, Narod SA. Frequencies of BRCA1 and BRCA2 mutations among 1,342 unselected patients with invasive ovarian cancer. *Gynecol Oncol* 2011;121:353–7.
- 11 Norquist BM, Harrell MI, Brady MF, Walsh T, Lee MK, Gulsuner S, Bernards SS, Casadei S, Yi Q, Burger RA, Chan JK, Davidson SA, Mannel RS, DiSilvestro PA, Lankes HA, Ramirez NC, King MC, Swisher EM, Birrer MJ. Inherited mutations in women with ovarian carcinoma. *JAMA Oncol* 2016;2:482–90.
- 12 Lancaster JM, Powell CB, Chen L-M, Richardson DL, SGO Clinical Practice Committee. Society of gynecologic oncology statement on risk assessment for inherited gynecologic cancer predispositions. *Gynecol Oncol* 2015;136:3–7.
- 13 Randall LM, Pothuri B, Swisher EM, Diaz JP, Buchanan A, Witkop CT, Bethan Powell C, Smith EB, Robson ME, Boyd J, Coleman RL, Lu K. Multi-Disciplinary Summit on genetics services for women with gynecologic cancers: a Society of gynecologic oncology white paper. *Gynecol Oncol* 2017;146:217–24.
- 14 O'Neil NJ, Bailey ML, Hieter P. Synthetic lethality and cancer. *Nat Rev Genet* 2017;18:613–23.
- 15 Pujade-Lauraine E, Ledermann JA, Selle F, GebSKI V, Penson RT, Oza AM, Korach J, Huzarski T, Poveda A, Pignata S, Friedlander M, Colombo N, Harter P, Fujiwara K, Ray-Coquard I, Banerjee S, Liu J, Lowe ES, Bloomfield R, Pautier P, SOE-O investigators, SOLO2/ENGOT-Ov21 investigators. Olaparib tablets as maintenance therapy in patients with platinum-sensitive, relapsed ovarian cancer and a BRCA1/2 mutation (SOLO2/ENGOT-Ov21): a double-blind, randomised, placebo-controlled, phase 3 trial. *Lancet Oncol* 2017;18:1274–84.
- 16 Coleman RL, Oza AM, Lorusso D, Aghajanian C, Oaknin A, Dean A, Colombo N, Weberpals JI, Clamp A, Scambia G, Leary A, Holloway RW, Gancedo MA, Fong PC, Goh JC, O'Malley DM, Armstrong DK, Garcia-Donas J, Swisher EM, Floquet A, Konecny GE, McNeish IA, Scott CL, Cameron T, Maloney L, Isaacson J, Goble S, Grace C, Harding TC, Raponi M, Sun J, Lin KK, Giordano H, Ledermann JA, investigators A, ARIEL3 investigators. Rucaparib maintenance treatment for recurrent ovarian carcinoma after response to platinum therapy (ARIEL3): a randomised, double-blind, placebo-controlled, phase 3 trial. *Lancet* 2017;390:1949–61.
- 17 Moore K, Colombo N, Scambia G, Kim B-G, Oaknin A, Friedlander M, Lisyanskaya A, Floquet A, Leary A, Sonke GS, Gourley C, Banerjee S, Oza A, González-Martín A, Aghajanian C, Bradley W, Mathews C, Liu J, Lowe ES, Bloomfield R, DiSilvestro P. Maintenance olaparib in patients with newly diagnosed advanced ovarian cancer. *N Engl J Med* 2018;379:2495–505.
- 18 Moschetta M, George A, Kaye SB, Banerjee S. Brca somatic mutations and epigenetic BRCA modifications in serous ovarian cancer. *Ann Oncol* 2016;27:1449–55.
- 19 Cancer Genome Atlas Research Network. Integrated genomic analyses of ovarian carcinoma. *Nature* 2011;474:609–15.
- 20 Balasubramaniam S, Beaver JA, Horton S, Fernandes LL, Tang S, Horne HN, Liu J, Liu C, Schrieber SJ, Yu J, Song P, Pierce W, Robertson KJ, Palmy TR, Chiu H-J, Lee EY, Philip R, Schuck R, Charlab R, Banerjee A, Chen XH, Wang X, Goldberg KB, Sridhara R, Kim G, Pazdur R. FDA Approval Summary: Rucaparib for the Treatment of Patients with Deleterious BRCA Mutation-Associated Advanced Ovarian Cancer. *Clin Cancer Res* 2017;23:7165–70.
- 21 . Regulatory Decision Summary - LYNPARZA-Health Canada. Available: <https://hprp.hres.ca/reg-content/regulatory-decision-summary-detail.php?lang=en&linkID=RDS00130> [Accessed April 2021].
- 22 Turashvili G, Lazaro C, Ying S, Charames G, Wong A, Hamilton K, Yee D, Agro E, Chang M, Pollett A, Lerner-Ellis J. Tumor BRCA testing in high grade serous carcinoma: mutation rates and optimal tissue requirements. *Cancers* 2020;12. doi:10.3390/cancers12113468. [Epub ahead of print: 21 11 2020].
- 23 Care M, McCuaig J, Clarke B, Grenier S, Kim RH, Rouzbahman M, Stickle N, Bernardini M, Stockley TL. Tumor and germline next generation sequencing in high grade serous cancer: experience from a large population-based testing program. *Mol Oncol* 2021;15:80–90.
- 24 Capoluongo E, Ellison G, López-Guerrero JA, Penault-Llorca F, Ligtnerberg MJL, Banerjee S, Singer C, Friedman E, Markiefka B, Schirmacher P, Büttner R, van Asperen CJ, Ray-Coquard I, Endris V, Kamel-Reid S, Percival N, Bryce J, Röthlisberger B, Soong R, de Castro DG. Guidance statement on BRCA1/2 tumor testing in ovarian cancer patients. *Semin Oncol* 2017;44:187–97.
- 25 Palacios J, de la Hoya M, Bellosillo B, de Juan I, Matías-Guix X, Lázaro C, Palanca S, Osorio A, Rojo F, Rosa-Rosa JM, Cigudosa JC. Mutational screening of BRCA1/2 genes as a predictive factor for therapeutic response in epithelial ovarian cancer: a consensus guide from the Spanish Society of pathology (SEAP-IAP) and the Spanish Society of human genetics (AEGH). *Virchows Arch* 2020;476:195–207.
- 26 Goswami RS, Luthra R, Singh RR, Patel KP, Routbort MJ, Aldape KD, Yao H, Dang HD, Barkoh BA, Manekia J, Medeiros LJ, Roy-Chowdhuri S, Stewart J, Broaddus RR, Chen H. Identification of factors affecting the success of next-generation sequencing testing in solid tumors. *Am J Clin Pathol* 2016;145:222–37.
- 27 Cree IA, Deans Z, Ligtnerberg MJL, Normanno N, Edsjö A, Rouleau E, Solé F, Thunnissen E, Timens W, Schuurin E, Dequeker E, Murray S, Dietel M, Groenen P, Van Krieken JH. Guidance for laboratories performing molecular pathology for cancer patients. *J Clin Pathol* 2014;67:923–31.
- 28 Compton CC, Robb JA, Anderson MW, Berry AB, Birdsong GG, Bloom KJ, Branton PA, Crothers JW, Cushman-Vokoun AM, Hicks DG, Khoury JD, Laser J, Marshall CB, Misialek MJ, Natale KE, Nowak JA, Olson D, Pfeifer JD, Schade A, Vance GH, Walk EE, Yohe SL, Preanalytics YSL. Preanalytics and precision pathology: pathology practices to ensure molecular integrity of cancer patient biospecimens for precision medicine. *Arch Pathol Lab Med* 2019;143:1346–63.
- 29 Malapelle U, Mayo-de-Las-Casas C, Molina-Vila MA, Rosell R, Savic S, Bihl M, Bubendorf L, Salto-Tellez M, de Biase D, Tallini G, Hwang DH, Sholl LM, Luthra R, Weynand B, Vander Borgh S, Missiaglia E, Bongiovanni M, Stieber D, Vielh P, Schmitt F, Rappa A, Barberis M, Pepe F, Pisapia P, Serra N, Viglieri E, Belleveic C, Fassan M, rugge M, de Andrea CE, Lozano MD, Basolo F, Fontanini G, Nikiforov YE, Kamel-Reid S, da Cunha Santos G, Nikiforova MN, Roy-Chowdhuri S, Troncione G, Molecular Cytopathology Meeting Group. Consistency and reproducibility of next-generation sequencing and other multigene mutational assays: a worldwide ring trial study on quantitative cytological molecular reference specimens. *Cancer Cytopathol* 2017;125:615–26.
- 30 Roy-Chowdhuri S, Pisapia P, Salto-Tellez M, Savic S, Nacchio M, de Biase D, Tallini G, Troncione G, Schmitt F. Invited review-next-generation sequencing: a modern tool in cytopathology. *Virchows Arch* 2019;475:3–11.
- 31 Gorncj E, Novakovic S, Stegel V, Hocevar M, Pohar Marincsek Z, Gazic B, Krajc M, Skof E. Cytology material is equivalent to tumor tissue in determining mutations of BRCA 1/2 genes in patients with tubo-ovarian high grade serous carcinoma. *BMC Cancer* 2019;19:296.
- 32 Fumagalli C, Rappa A, Casadio C, Betella I, Colombo N, Barberis M, Guerini-Rocco E. Next-Generation sequencing-based BRCA testing on cytological specimens from ovarian cancer ascites reveals high concordance with tumour tissue analysis. *J Clin Pathol* 2020;73:168–71.
- 33 Shah RH, Scott SN, Brannon AR, Levine DA, Lin O, Berger MF. Comprehensive mutation profiling by next-generation sequencing of effusion fluids from patients with high-grade serous ovarian carcinoma. *Cancer Cytopathol* 2015;123:289–97.
- 34 Jennings LJ, Arcila ME, Corless C, Kamel-Reid S, Lubin IM, Pfeifer J, Temple-Smolkin RL, Voelkerding KV, Nikiforova MN. Guidelines for validation of next-generation sequencing-based oncology panels: a joint consensus recommendation of the association for molecular pathology and College of American pathologists. *J Mol Diagn* 2017;19:341–65.
- 35 Hume S, Nelson TN, Speevak M, McCready E, Agatep R, Feilottor H, Parboosingh J, Stavropoulos DJ, Taylor S, Stockley TL, Canadian College of Medical Geneticists (CCMG). Ccmg practice guideline: laboratory guidelines for next-generation sequencing. *J Med Genet* 2019;56:792–800.
- 36 Roy S, Coldren C, Karunamurthy A, Kip NS, Klee EW, Lincoln SE, Leon A, Pullambhatla M, Temple-Smolkin RL, Voelkerding KV, Wang C, Carter AB. Standards and guidelines for validating next-generation sequencing bioinformatics pipelines: a joint recommendation of the association for molecular pathology and the College of American pathologists. *J Mol Diagn* 2018;20:4–27.

- 37 Eijkelenboom A, Tops BBJ, van den Berg A, van den Brule AJC, Dinjens WNM, Dubbink HJ, Ter Elst A, Geurts-Giele WRR, Groenen PJTA, Groenendijk FH, Heideman DAM, Huijbers MMH, Huijsmans CJJ, Jeuken JWM, van Kempen LC, Korpershoek E, Kroeze LI, de Leng WWJ, van Noesel CJM, Speel E-JM, Vogel MJ, van Wezel T, Nederlof PM, Schuuring E, Ligtenberg MJL. Recommendations for the clinical interpretation and reporting of copy number gains using gene panel NGS analysis in routine diagnostics. *Virchows Arch* 2019;474:673–80.
- 38 Schenkel LC, Kerkhof J, Stuart A, Reilly J, Eng B, Woodside C, Levstik A, Howlett CJ, Rupar AC, Knoll JHM, Ainsworth P, Wayne JS, Sadikovic B. Clinical next-generation sequencing pipeline outperforms a combined approach using Sanger sequencing and multiplex ligation-dependent probe amplification in targeted gene panel analysis. *J Mol Diagn* 2016;18:657–67.
- 39 Richards S, Aziz N, Bale S, Bick D, Das S, Gastier-Foster J, Grody WW, Hegde M, Lyon E, Spector E, Voelkerding K, Rehm HL, ACMG Laboratory Quality Assurance Committee. Standards and guidelines for the interpretation of sequence variants: a joint consensus recommendation of the American College of medical genetics and genomics and the association for molecular pathology. *Genet Med* 2015;17:405–24.
- 40 Canadian College of Medical Geneticists (CCMG). Canadian College of Medical Geneticists (CCMG) statement on germline variant classification, 2017. Available: [https://www.ccmg-ccgm.org/images/Guidelines/CCMG\\_Statement\\_on\\_Germline\\_Variant\\_Classification\\_FINAL\\_April\\_2017](https://www.ccmg-ccgm.org/images/Guidelines/CCMG_Statement_on_Germline_Variant_Classification_FINAL_April_2017)
- 41 Sukhai MA, Craddock KJ, Thomas M, Hansen AR, Zhang T, Siu L, Bedard P, Stockley TL, Kamel-Reid S. A classification system for clinical relevance of somatic variants identified in molecular profiling of cancer. *Genet Med* 2016;18:128–36.
- 42 Li MM, Datto M, Duncavage EJ, Kulkarni S, Lindeman NI, Roy S, Tsimberidou AM, Vnencak-Jones CL, Wolff DJ, Younes A, Nikiforova MN. Standards and guidelines for the interpretation and reporting of sequence variants in cancer: a joint consensus recommendation of the association for molecular pathology, American Society of clinical oncology, and College of American pathologists. *J Mol Diagn* 2017;19:4–23.
- 43 Chakravarty D, Gao J, Phillips SM, Kundra R, Zhang H, Wang J, Rudolph JE, Yaeger R, Soumerai T, Nissan MH, Chang MT, Chandraratna S, Traina TA, Paik PK, Ho AL, Hantash FM, Grupe A, Baxi SS, Callahan MK, Snyder A, Chi P, Danila D, Gounder M, Harding JJ, Hellmann MD, Iyer G, Janjigian Y, Kaley T, Levine DA, Lowery M, Omuro A, Postow MA, Rathkopf D, Shoushtari AN, Shukla N, Voss M, Paraiso E, Zehir A, Berger MF, Taylor BS, Saltz LB, Riely GJ, Ladanyi M, Hyman DM, Baselga J, Sabbatini P, Solit DB, Schultz N. OncoKB: a precision oncology knowledge base. *JCO Precis Oncol* 2017;2017. doi:10.1200/PO.17.00011. [Epub ahead of print: 16 05 2017].
- 44 Spence T, Sukhai MA, Kamel-Reid S, Stockley TL. The somatic curation and interpretation across laboratories (social) project-current state of solid-tumour variant interpretation for molecular pathology in Canada. *Curr Oncol* 2019;26:353–60.
- 45 Abou Tayoun AN, Pesaran T, DiStefano MT, Oza A, Rehm HL, Biasecker LG, Harrison SM, ClinGen Sequence Variant Interpretation Working Group (ClinGen SVI). Recommendations for interpreting the loss of function PVS1 ACMG/AMP variant criterion. *Hum Mutat* 2018;39:1517–24.
- 46 The Cancer Genome Atlas Research Network. Comprehensive genomic characterization defines human glioblastoma genes and core pathways. *Nature* 2008;455:1061–8.
- 47 Smith SA, Easton DF, Evans DG, Ponder BA. Allele losses in the region 17q12-21 in familial breast and ovarian cancer involve the wild-type chromosome. *Nat Genet* 1992;2:128–31.
- 48 Collins N, McManus R, Wooster R, Mangion J, Seal S, Lakhani SR, Ormiston W, Daly PA, Ford D, Easton DF. Consistent loss of the wild type allele in breast cancers from a family linked to the BRCA2 gene on chromosome 13q12-13. *Oncogene* 1995;10:1673–5.
- 49 Riggs ER, Andersen EF, Cherry AM, Kantarci S, Kearney H, Patel A, Raca G, Ritter DI, South ST, Thorland EC, Pineda-Alvarez D, Aradhya S, Martin CL. Technical standards for the interpretation and reporting of constitutional copy-number variants: a joint consensus recommendation of the American College of medical genetics and genomics (ACMG) and the clinical genome resource (ClinGen). *Genet Med* 2020;22:245–57.
- 50 Maxwell KN, Wubbenhorst B, Wenz BM, De Sloover D, Pluta J, Emery L, Barrett A, Kraya AA, Anastopoulos IN, Yu S, Jiang Y, Chen H, Zhang NR, Hackman N, D'Andrea K, Daber R, Morrisette JJD, Mitra N, Feldman M, Domchek SM, Nathanson KL. Brca locus-specific loss of heterozygosity in germline BRCA1 and BRCA2 carriers. *Nat Commun* 2017;8:319.
- 51 Abkevich V, Timms KM, Hennessy BT, Potter J, Carey MS, Meyer LA, Smith-McCune K, Broaddus R, Lu KH, Chen J, Tran TV, Williams D, Iliev D, Jammulapati S, FitzGerald LM, Krivak T, DeLoia JA, Gutin A, Mills GB, Lanchbury JS. Patterns of genomic loss of heterozygosity predict homologous recombination repair defects in epithelial ovarian cancer. *Br J Cancer* 2012;107:1776–82.
- 52 Swisher EM, Lin KK, Oza AM, Scott CL, Giordano H, Sun J, Konecny GE, Coleman RL, Tinker AV, O'Malley DM, Kristeleit RS, Ma L, Bell-McGuinn KM, Brenton JD, Cragun JM, Oaknin A, Ray-Coquard I, Harrell MI, Mann E, Kaufmann SH, Floquet A, Leary A, Harding TC, Goble S, Maloney L, Isaacson J, Allen AR, Rolfe L, Yelensky R, Raponi M, McNeish IA. Rucaparib in relapsed, platinum-sensitive high-grade ovarian carcinoma (ARIEL2 Part 1): an international, multicentre, open-label, phase 2 trial. *Lancet Oncol* 2017;18:75–87.
- 53 Norquist B, Wurz KA, Pennil CC, Garcia R, Gross J, Sakai W, Karlan BY, Taniguchi T, Swisher EM. Secondary somatic mutations restoring BRCA1/2 predict chemotherapy resistance in hereditary ovarian carcinomas. *J Clin Oncol* 2011;29:3008–15.
- 54 Sakai W, Swisher EM, Karlan BY, Agarwal MK, Higgins J, Friedman C, Villegas E, Jacquemont C, Farrugia DJ, Couch FJ, Urban N, Taniguchi T. Secondary mutations as a mechanism of cisplatin resistance in BRCA2-mutated cancers. *Nature* 2008;451:1116–20.

**Sample Reports:**

**Example 1:** *BRCA1/2* clinically significant variant was detected.

**Name:** Last, First

**DOB:** DD/MM/YYYY

**Patient Reference Number:**

**Tissue Reference Number:**

**Tissue Type:** {Cytology, Biopsy, Resection – Omentum, Fallopian Tube, Ovary, etc.}

**Provisional diagnosis:** high grade serous carcinoma

**Tumour Cellularity:**

**Test:** Tumour *BRCA1* and *BRCA2* sequence and copy number variants analysis

**RESULTS**

A clinically actionable sequence variant c.5851\_5854del, p.(Ser1951TrpfsTer11) was detected in the *BRCA2* gene. The variant was present in approximately 60% of sequenced fragments.

NGS quality parameters:

Average depth of coverage: 1,120x

Regions with suboptimal depth of coverage where presence of variants cannot be conclusively assessed: none

**INTERPRETATION**

Presence of clinically actionable *BRCA1/2* variants can be associated with a favourable response to PARP inhibitors treatment in patients responsive to platinum-chemotherapy [1; 2]. The tumour specimen provided contains a clinically actionable variant c.5851\_5854del, p.(Ser1951TrpfsTer11) in the *BRCA2* gene. Presence of this variant is likely to be associated with increased sensitivity to PARP inhibitors treatment.

The current analysis was limited to tumour tissue and we are therefore unable to determine whether this is a somatic (acquired) or germline (inherited) variant.

A high proportion of *BRCA1/2* variants identified in ovarian tumour samples are also present in the germline. Germline pathogenic variants in the *BRCA1/2* genes are associated with an inherited cancer predisposition syndrome that may confer an increased cancer risk for this individual and family members.

Germline variants in genes other than *BRCA1/2* that are known to be associated with high grade serous carcinoma were not examined.

*Practice Guidelines for BRCA1/2 Tumour Testing in Ovarian Cancer , Appendix 1, Report examples* 1



Referral to hereditary cancer clinic for genetic counselling and hereditary cancer risk assessment is recommended.

#### Variant(s) summary:

This *BRCA2* c.5851\_5854del, p.(Ser1951TrpfsTer11) variant is a four nucleotides deletion and is predicted to result in a frameshift/ of open reading frame and premature stop codon. This variant is expected to result in loss-of-function due to a truncated *BRCA2* protein and/or nonsense-mediated decay. This variant {has /has not} been previously reported in the ClinVar patient database (Variation ID: \_\_\_\_\_) and {has /has not} been catalogued in the COSMIC database of somatic variants.

#### **TEST SUMMARY & DISCLAIMERS:**

Background: Loss of function *BRCA1/BRCA2* mutations in high grade serous ovarian, fallopian tube or primary peritoneal tumors can be associated with favorable response to treatment with the PARP inhibitors and improved overall survival [1;2]. A high proportion of *BRCA1/BRCA2* variants identified in ovarian tumour samples are also present in the germline [2]. Germline pathogenic variants in the *BRCA1/BRCA2* genes are associated with an inherited cancer predisposition syndrome that may confer an increased cancer risk for this individual and family members [3].

Genes Tested: *BRCA1* (NM\_007294.3 \*, exons 2-24), *BRCA2* (NM\_000059.3, exons 2-27)\*\*

Methodology: DNA was extracted from the paraffin-embedded tissue and tested using a custom designed next-generation sequencing (NGS) protocol. Coding exons and 10 bp of flanking intronic regions were enriched using a [targeted capture/amplicon-based] protocol ( [Add vendor] ). Sequencing was performed using either a [...] instrument. Sequence alignment and variant calling was performed using [...] software, version X ([add vendor]).

Sequence variants are annotated using the [...] software, version [] ([add vendor]). This test was validated to detect sequence variants with a variant allele frequency of 10% or higher. Test sensitivity is estimated to be [>98%] for detection of single nucleotide variants and insertions/deletions smaller than [ ] nucleotides.

Exon level copy number variants (CNVs) were analyzed using the [...] algorithm in [...] software, version [] ([add vendor]). This method was validated to detect exon level deletions and duplications in the tumour tissue similar to those in germline samples (ie. at an allele frequency of approximately 50% or greater). Sensitivity of CNV detection might be lower in tumours compared to peripheral blood samples due to tumour biology and quality of DNA from FFPE samples.

Variants are interpreted and classified using ACMG guidelines [4]. Variants that are classified as Pathogenic (ACMG 1), Likely Pathogenic (ACMG 2) are reported as clinically actionable, variants of Uncertain Significance (ACMG 3) are not considered to be clinically actionable and are reported separately to inform future germline testing. Variants classified as Likely Benign (ACMG 4) or Benign (ACMG 5) are not reported but are available upon request.

*Practice Guidelines for BRCA1/2 Tumour Testing in Ovarian Cancer, Appendix 1, Report examples* 2

**Limitations:** This test is limited to *BRCA1* and *BRCA2*[coding exons and 10 bp of flanking intronic regions]\*\*.

**References:** [1] Ledermann et al, Lancet Oncol. 2016 Nov;17(11):1579-1589 (PMID: 27617661); [2] Konstantinopoulos et al, J Clin Oncol. 2020 Apr 10;38(11):1222-1245., Br J Cancer. 2016 Nov 8;115(10):1157-1173, (PMID: 31986064); [3] GeneReviews, 2016 (PMID 20301425); [4] Richards et al Genet Med 2015; 17:405-424 (PMID: 25741868).

**Disclaimers:** This test is unable to distinguish between a somatic and a germline variants. Any interpretation is provided without knowledge if the variants detected are somatic or germline and assuming and that the pathology diagnosis and tumor % is correct.

**Report was reviewed and approved by:**

**Date:**

\*Alternatively Locus Reference Genomic numbers LRG\_293t1 (*BRCA1*) and LRG\_293t1 (*BRCA2*) could be used

\*\* At minimum coding regions of *BRCA1* & *BRCA2* and 10 bp of flanking regions should be tested, additional non-coding region could be added as knowledge about *BRCA1/2* disease causing variants evolve.

[] – indicate the parameters that are laboratory specific

**Example 2:** No Variants Detected in the *BRCA1/2*.

**Name:** Last, First

**DOB:** DD/MM/YYYY

**Patient Reference Number:**

**Tissue Reference Number:**

**Tissue Type:** {Cytology, Biopsy, Resection – Omentum, Fallopian Tube, Ovary, etc}

**Provisional diagnosis:** high grade serous carcinoma

**Tumour Cellularity:**

**Test:** Tumour *BRCA1* and *BRCA2* sequence and copy number variants analysis

## RESULTS

**Clinically actionable sequence or copy number variants were NOT detected in either the *BRCA1* or *BRCA2* genes.**

**NGS Quality Parameters:** Average depth of coverage: 1,080 x

Regions with suboptimal depth of coverage where presence of variants cannot be conclusively assessed: none

## INTERPRETATION

No clinically actionable variants in the *BRCA1* and *BRCA2* genes were detected in the tumour specimen provided. Absence of clinically significant *BRCA1/BRCA2* variants can be associated with a less favourable response to PARP inhibitors treatment.

Germline variants in genes other than *BRCA1/2* that are known to be associated with high grade serous ovarian carcinomas were not examined and a negative test for *BRCA1/2* does not rule out an inherited etiology.

Referral to hereditary cancer clinic for genetic counselling and hereditary cancer risk assessment is recommended.

**Test Summary and Disclaimer as above**

**Report was reviewed and approved by:**

**Date:**



**Example 3:** *BRCA1/2* variant of uncertain clinical significance was detected.

**Name:** Last, First

**DOB:** DD/MM/YYYY

**Patient Reference Number:**

**Tissue Reference Number:**

**Tissue Type:** {Cytology, Biopsy, Resection – Omentum, Fallopian Tube, Ovary, etc.}

**Provisional diagnosis:** high grade serous carcinoma

**Tumour Cellularity:**

**Test:** Tumour *BRCA1* and *BRCA2* sequence and copy number variants analysis

## RESULTS

**Clinically actionable sequence or copy number variants were NOT detected in either the *BRCA1* or *BRCA2* genes.**

**NGS quality parameters:** Average depth of coverage: 1,119 x

Regions with suboptimal depth of coverage where presence of variants cannot be conclusively assessed: none.

## INTERPRETATION

No clinically actionable variants in the *BRCA1* and *BRCA2* genes were detected in the tumour specimen provided. Absence of clinically significant *BRCA1/BRCA2* variants can be associated with a less favourable response to PARP inhibitor treatment.

However, a variant of uncertain significance was detected in the *BRCA1* gene (see variant summary below).

Germline variants in genes other than *BRCA1/2* that are known to be associated with high grade serous ovarian carcinomas were not examined and a negative test for *BRCA1/2* does not rule out an inherited etiology.

Referral to hereditary cancer clinic for genetic counselling and hereditary cancer risk assessment is recommended.

### Variant(s) summary:

This sample is positive for *BRCA1* c.1333G>C, p.(Glu445Gln) missense sequence variant. The variant was detected in 25% of sequenced fragments. The clinical significance of this variant is uncertain, and no recommendation can be made regarding PARP inhibitors sensitivity. The

*Practice Guidelines for BRCA1/2 Tumour Testing in Ovarian Cancer, Appendix 1, Report examples* 5

information about this variant is provided to inform future germline testing in this individual or her family.

**Test Summary and Disclaimer as above**

**Report was reviewed and approved by:**

**Date:**