



OPEN ACCESS

ORIGINAL RESEARCH

Use of a rare disease registry for establishing phenotypic classification of previously unassigned *GLA* variants: a consensus classification system by a multispecialty Fabry disease genotype–phenotype workgroup

Dominique P Germain ¹, João Paulo Oliveira,^{2,3} Daniel G Bichet,^{4,5} Han-Wook Yoo,⁶ Robert J Hopkin,^{7,8} Roberta Lemay,⁹ Juan Politei,¹⁰ Christoph Wanner,¹¹ William R Wilcox,¹² David G Warnock¹³

► Additional material is published online only. To view please visit the journal online (<http://dx.doi.org/10.1136/jmedgenet-2019-106467>).

For numbered affiliations see end of article.

Correspondence to

Professor Dominique P Germain, French Referral Centre for Fabry disease, Division of Medical Genetics, University of Versailles, Paris-Saclay University, Montigny, France; dominique.germain@uvsq.fr

Received 2 August 2019
Revised 13 December 2019
Accepted 3 January 2020

ABSTRACT

Background Fabry disease (α -galactosidase deficiency) is an X-linked genetic disease caused by a variety of pathogenic *GLA* variants. The phenotypic heterogeneity is considerable, with two major forms, classic and later-onset disease, but adjudication of clinical phenotype is currently lacking for many variants. We aimed to determine consensus phenotypic classification for previously unclassified *GLA* variants from the *GLA*-specific fabry-database.org database.

Methods A Fabry disease genotype–phenotype workgroup developed a five-stage iterative system based on expert clinical assessment, published literature and clinical evidence of pathogenicity using a 2-point scoring system based on clinical hallmarks of classic disease. Kaplan–Meier (KM) analysis of severe clinical event-free survival was used as final validation. Results were compared with those from web-based disease databases and in silico pathogenicity prediction programmes.

Results Final consensus on classifications of ‘pathogenic’ was achieved for 32 of 33 *GLA* variants (26 ‘classic’ phenotype, 171 males; 6 ‘later-onset’ phenotype, 57 males). One variant remained of uncertain significance. KM curves were similar for the known fabry-database.org database phenotypes and when workgroup consensus classifications were added, and the curves retained the same separation between ‘classic’ and ‘later-onset’ phenotypes.

Conclusion The iterative system implemented by a Fabry disease genotype–phenotype workgroup achieved phenotypic classifications for variants that were previously unclassified. Clinical pathogenicity associated with a particular *GLA* variant defined in affected males appears to have predictive value and also generally correlates with risk for affected females. The newly established classifications can be of benefit to the clinical care of Fabry patients harbouring these variants.

Gene Entrez: 2717; NCBI reference sequence: NM_000169.2), which encodes α -galactosidase (α -Gal, Enzyme Commission number: EC 3.2.1.22; UniProt ID: P06280).¹ Molecular studies of *GLA* variants have identified a remarkable variety of variants underlying the phenotypic heterogeneity of this genetic disorder.^{2–18} At present, nearly 1000 different *GLA* variants have been reported (table 1). Most of the variants are ‘private’ and confined to individual pedigrees with possible variability in phenotypic expression due to phenotype-modifying factors (eg, genetic background, epigenetics and environmental conditions).^{19 20}

GLA variants can be disease-causing (pathogenic or likely pathogenic), of uncertain significance, likely benign, or benign.^{1 21–23} In hemizygous males with pathogenic *GLA* variants associated with the classic phenotype, clinical symptoms typically appear in childhood (eg, diffuse angiokeratomas, cornea verticillata, dysaesthesia in the extremities). α -Gal activity is severely deficient (<1%) or absent, and marked accumulation of globotriaosylceramide (GL-3, Gb₃) and globotriaosylsphingosine (lyso-GL-3) generally leads to multiorgan failure and reduced life expectancy. In contrast, patients with pathogenic *GLA* variants associated with non-classic, later-onset phenotypes have varying levels of residual α -Gal activity, variable age of symptom onset and fewer clinical manifestations of Fabry disease, often confined to the heart. Phenotypic presentations are even more variable in heterozygous female patients due to both the nature and type of the *GLA* variant and the X-chromosome inactivation profiles in the various organs.²⁴

Consensus recommendations for the interpretation of variant pathogenicity have been published by the American College of Medical Genetics and Genomics (ACMG) and the Association for Molecular Pathology (AMP) and are based on criteria using a process incorporating several lines of evidence (eg, scientific and medical literature, disease databases, in silico prediction programmes, functional data).²³ In parallel, due to the broad heterogeneity in the natural history of Fabry patients, there has been



© Author(s) (or their employer(s)) 2020. Re-use permitted under CC BY-NC. No commercial re-use. See rights and permissions. Published by BMJ.

To cite: Germain DP, Oliveira JP, Bichet DG, et al. *J Med Genet* Epub ahead of print: [please include Day Month Year]. doi:10.1136/jmedgenet-2019-106467

INTRODUCTION

Fabry disease (OMIM #301500) is a rare, progressive, X-linked inherited, multisystemic, lysosomal disorder. It is caused by genetic variations in *GLA* (HUGO Gene Nomenclature Committee ID: 4296;

Table 1 Types of *GLA* variants reported in the Human Gene Mutation Database

<i>GLA</i> variant types	Number	% of total
Missense (pathogenic with classic or later-onset phenotypes, or benign with no or unspecific, Fabry disease-unrelated phenotype)	605	61.0
Nonsense (pathogenic with classic phenotype)	84	8.5
Splicing substitutions (pathogenic with classic or later-onset phenotypes)	49	4.9
Frameshift (pathogenic with classic phenotype)*	253	25.5
Small deletions†	140	14.1
Gross deletions	39	3.9
Small insertions/duplications	43	4.3
Gross insertions/duplications	8	0.8
Small indels	16	1.6
Complex rearrangements (including inversions)	7	0.7
Total	991	100.0

*Small and gross are arbitrarily defined as 20 or less and more than 20 nucleotides, respectively.

†Some small deletions occur in-frame and do not necessarily lead to premature termination of mRNA translation.

increasing interest among experts in the Fabry disease scientific community for establishing potential associations between *GLA* genotypes and phenotypic presentations (eg, International Fabry Disease Genotype-Phenotype Database (dbFGP, <http://dbfgp.org/dbfgp/fabry/>), fabry-database.org *GLA* variant database²⁵) in order to optimise clinical management. However, many *GLA* variants remain absent from or unclassified in those gene-specific databases.

With over 6500 patients (44% males) enrolled, the Fabry Registry has the potential to have several individuals with the same genotype, offering a unique opportunity for assessment of their phenotypic characteristics. Based on the presence or absence of clinical characteristics associated with the classic versus the later-onset Fabry phenotype, the multispecialty Fabry disease genotype-phenotype workgroup developed a novel Fabry phenotype consensus classification system (which we present in this paper) to facilitate the classification of *GLA* variants reported to the Fabry Registry. This approach was used to assign phenotype classifications to variants that had remained unassigned in the fabry-database.org database, provided that the required Fabry Registry data were available for at least four male patients harbouring a specific *GLA* variant.

METHODS

Fabry disease genotype-phenotype workgroup

The international genotype-phenotype workgroup was composed of nine established experts in Fabry disease with extensive experience in patients' clinical care and knowledge of *GLA* variants, including personally observed clinical expressions (all authors of the present paper). They were all Fabry Registry Advisory Board members representing four subspecialties (genetics (n=4), nephrology (n=3), neurology (n=1) and paediatrics (n=1)) from major referral centres in seven different countries. The workgroup met during Registry Advisory Board meetings and had telephone conference meetings, with further exchange of information via email.

Fabry Registry

Deidentified patient natural history data from the Fabry Registry (NCT00196742, sponsor: Sanofi Genzyme) were used in the analyses. The Fabry Registry is a multicentre, international, longitudinal, observational programme that was initiated in 2001 and designed to track the natural history and treatment outcomes of patients with Fabry disease. Patient and investigator participation is voluntary. Recommended schedules of clinical

assessments are available but treating physicians determine the actual frequency of assessments according to a patient's individualised need for medical care and routine follow-up.

Consensus procedures

A five-stage iterative system was implemented to reach a final consensus on the criteria to classify the phenotypes associated with *GLA* variants that were not classified in the fabry-database.org database.²⁵ This database for clinicians and researchers contains published *GLA* variants in patients with Fabry disease and assessment of the variants' phenotypes, as reported in the literature, and had been operational for several years prior to initiation of the current research project (the dbFGP became operational in 2018). It was constructed and is maintained by an independent research group led by Dr H Sakuraba (Department of Clinical Genetics, Meiji Pharmaceutical University, Tokyo, Japan). Standardised Human Genome Variation Society nomenclature was used to describe the *GLA* variants²⁶ and, as recommended, standard terminology was used for variant classification, that is, 'pathogenic' (clinically differentiated as 'classic' or 'later-onset' phenotype), 'likely pathogenic' ('classic' or 'later-onset' phenotype), 'uncertain significance', 'likely benign' and 'benign'.²³ The process was limited to phenotypes in male patients, given the multifactorial phenotypic variability in female patients with a specific pathogenic *GLA* variant.

The five stages of the workgroup's classification system are outlined in [figure 1](#) together with an overview of *GLA* variant inclusion and exclusion. In Stage 1, individual workgroup members gave preliminary expert clinical assessment of phenotype classification for *GLA* variants that are unclassified in the fabry-database.org database and occurred in ≥ 5 Fabry patients (males and females) enrolled in the Fabry Registry. The preliminary assessment was based on personal clinical observations, valuation of published literature and review of the variant's potential deleterious impact on *GLA* and/or α -Gal function in light of established molecular mechanisms. Variants qualified for inclusion in Stage 2 if ≥ 4 male patients having a particular variant had Fabry Registry 2-point scoring data available for assessment of clinical evidence of pathogenicity (see below). Variants categorised as 'likely benign' or 'benign' not warranting in-depth investigation were excluded. In Stage 2, preliminary Stage 1 phenotype classifications were confirmed or reassessed based on updated fabry-database.org classifications (May 2016) and *GLA* variant 2-point scores. Unclassified variants, which were identified using a reconciled Fabry Registry data download (July 2016), were added to the process in Stage 2 if they met the

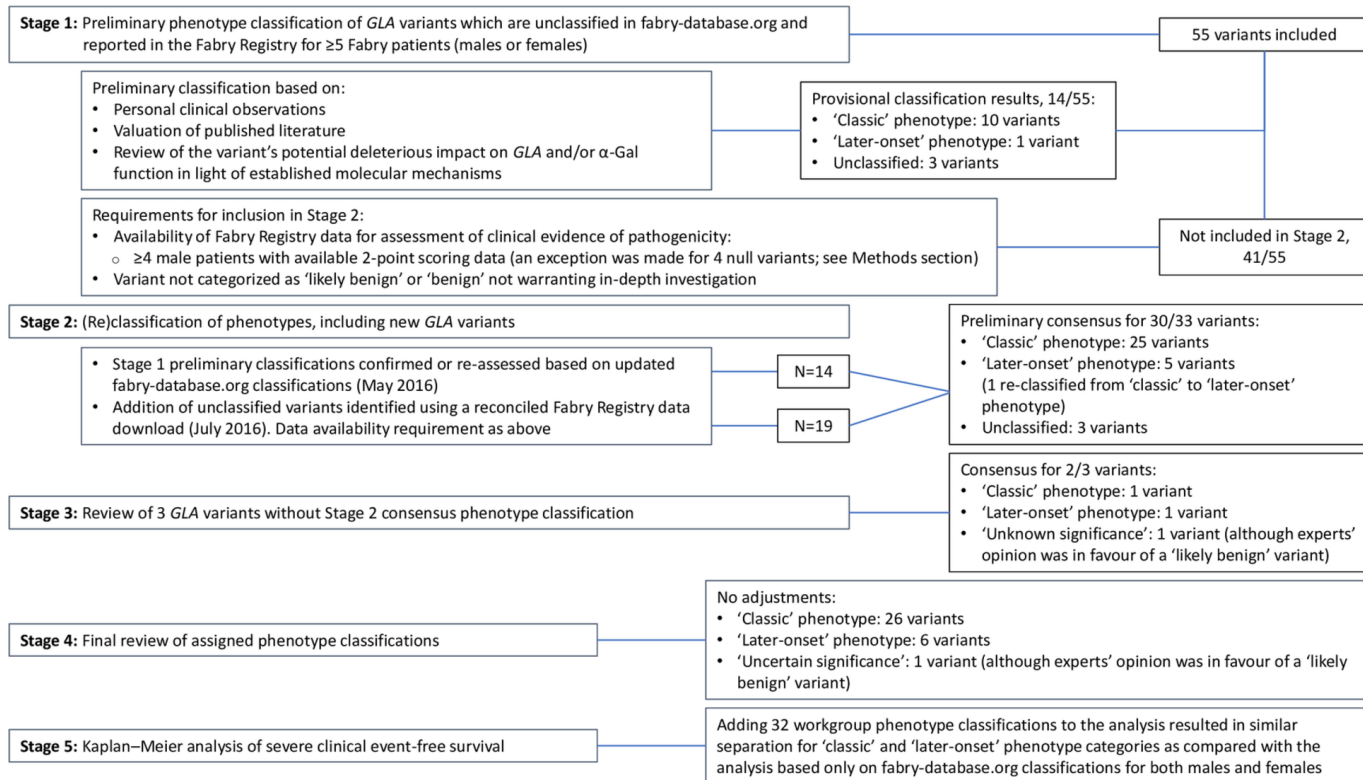


Figure 1 The five stages of the workgroup's classification system and an overview of *GLA* variants inclusion and exclusion.

data availability criterion. Some null variants that were present in ≥4 male patients, with <4 patients having 2-point scoring data available, were included in the process as the deleterious impact of these variants dominated the expert's clinical phenotype overall assessment as 'classic'.

The assessment of clinical evidence of pathogenicity used a *GLA* variant 2-point scoring system based on absence/presence of hallmark symptoms of the classic phenotype of Fabry disease (ie, diffuse angiokeratomas and cornea verticillata) as recorded in the Fabry Registry (figure 2) and online supplementary methods).

GLA variant 2-point scores were calculated as follows: the total number of positive responses for angiokeratomas or cornea verticillata for males having the *GLA* variant divided by the total number of responses for angiokeratomas or cornea verticillata status for that variant as a percentage (see online supplementary methods for an example of calculation). Two-point scores could range from 0% (indicative of probability of lower level of pathogenicity, that is, 'later-onset' variant or non-pathogenicity) to 100% (highest level of probability of pathogenicity and 'classic' phenotype). The 2-point scoring system was successfully tested

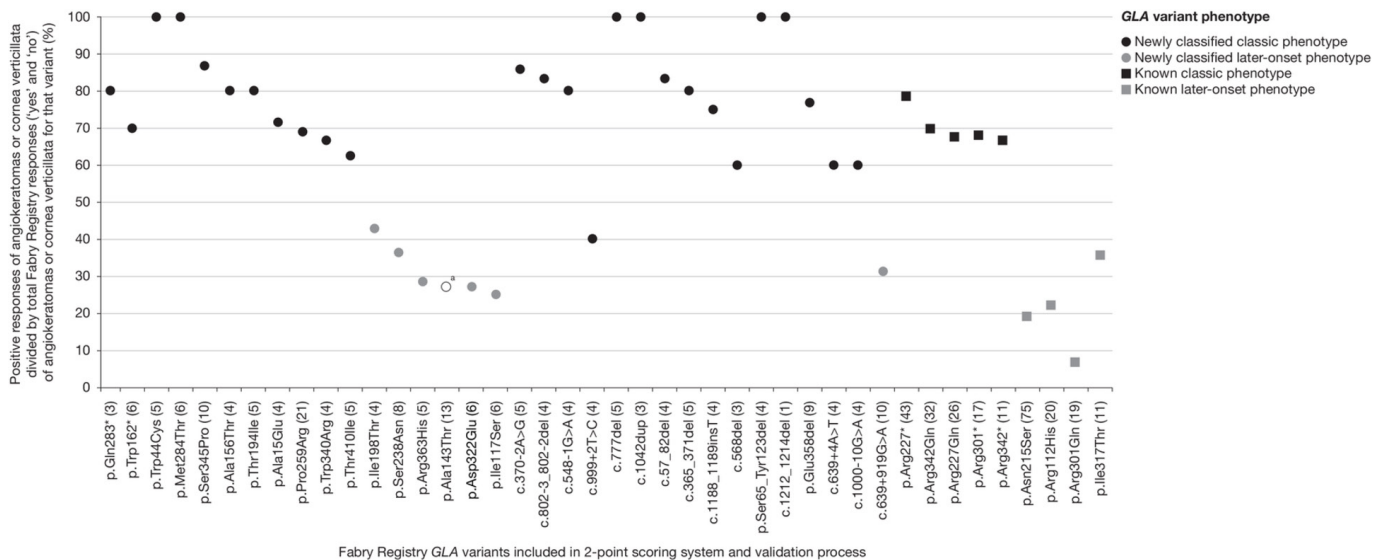


Figure 2 *GLA* variant 2-point scoring validation and results. ^aGenetic variant of unknown significance (experts' opinion in favour of a likely benign *GLA* variant; further research required). *Translation termination codon. Numbers in brackets indicate the number of males who had usable 2-point scoring responses (angiokeratomas or cornea verticillata) recorded in the Fabry Registry per variant.

for its precision in distinguishing classic from later-onset Fabry phenotypes. Variants known as being associated with the classic phenotype (n=5) or a later-onset phenotype (n=4) and (relatively) frequently occurring in male patients enrolled in the Fabry Registry (total of 129 and 125 males with usable 2-point scoring responses, respectively) were included in the method validation process and were appropriately separated (figure 2). In Stage 3, the workgroup members performed a detailed review of *GLA* variants that had not reached a consensus phenotype classification during Stage 2, and Stage 4 encompassed a final review of all assigned phenotype classifications. In Stage 5, Kaplan–Meier (KM) analysis of severe clinical event-free survival was performed using natural history clinical data from adult male patients enrolled in the Fabry Registry and, for further validation, of data from female patients (see also ‘Statistical considerations’).

As recommended in the ACMG/AMP guidelines for interpretation of variant pathogenicity,²³ our final phenotype classifications were compared with results obtained from established web-based Fabry disease-specific (ie, dbFGP) and broader genetic variants databases (ClinVar database and Leiden Open Variation Database (LOVD)), and from in silico programmes commonly used for prediction of pathogenicity of missense variants (ie, Polymorphism Phenotyping V.2 (PolyPhen-2), Scale-Invariant Feature Transform (SIFT) and MutationTaster). The Exome Aggregation Consortium (ExAC) database was used to retrieve the frequencies of variants in the general population, if available.

Statistical considerations

In the KM analysis of severe clinical event-free survival (time to median (50%) event-free survival), data were analysed by fabry-database.org pathogenicity available for *GLA* variants (with ‘classic’ or ‘later-onset’ phenotype) or unclassified variants, and by combining phenotype classifications from this database with the newly established workgroup consensus classifications. A severe clinical event was defined as a composite event including renal (kidney transplant, chronic dialysis), cardiac (significant cardiac procedures, arrhythmia, angina pectoris, congestive heart failure) and cerebrovascular events (stroke) and death. Statistical analyses were performed using SAS statistical software V.9.2 (SAS Institute, Cary, North Carolina, USA). The log-rank test was used to compare the survival distributions for variants with ‘classic’ and ‘later-onset’ phenotypes. An alpha level of 0.05 was used as the criterion for statistical significance.

RESULTS

Stage 1: Preliminary phenotype classification of 55 *GLA* variants

A provisional consensus of ‘pathogenic’ was achieved for 11 of 55 (20%) variants (10 with the ‘classic’ phenotype and 1 (p.Arg363His) with a ‘later-onset’ phenotype) (online supplementary table 1). Three variants remained unclassified at this stage. Forty-one variants were excluded from further evaluation (see Methods section).

Stage 2: (Re)classification of phenotypes, including new *GLA* variants

Thirty-three *GLA* variants, including 19 variants added to the process using a reconciled Fabry Registry data download, qualified for assessment in Stage 2 (table 2, figure 1). These variants were found at a mean frequency of 7.6 males per variant and were from a total of 252 adult male patients with Fabry disease. Preliminary consensus of ‘pathogenic’ was achieved for 30 of 33 *GLA* variants, including 25 variants with the ‘classic’

phenotype (2-point scores ranging from 60% to 100%) and five with a ‘later-onset’ phenotype (2-point scores ranging from 25% to 43%) (table 2). The p.Ser238Asn (11 males) missense variant, initially classified as ‘pathogenic’ with the ‘classic’ phenotype during Stage 1, was reclassified as ‘pathogenic’ with a ‘later-onset’ phenotype, taking the 2-point score of 36% into account. The reclassification of this variant merits caution in clinical application of the classification.

Stage 3: Review of *GLA* variants without consensus phenotype classification

During Stage 2, preliminary phenotype consensus was not reached for three variants (p.Asp322Glu, c.999+2T>C and p.Ala143Thr) (table 2). A further review of the data by the workgroup resulted in consensus for two of these three variants.

The p.Asp322Glu variant was originally reported in the literature as a pathogenic variant with a classic phenotype, with no clinical information provided.²⁷ Using an artificial substrate, residual enzyme activity of 1.5% of mean values in normal subjects has recently been reported,²⁸ but the low 2-point score of 27% (6 males) led to a workgroup classification as ‘pathogenic’ variant with a ‘later-onset’ phenotype.

The c.999+2T>C splice site variant is an intronic variant at a consensus site of splicing,²⁹ which are known to invariably cause aberrant splicing.¹⁸ Despite having a 2-point score of 40% (4 males), workgroup consensus was that the classification was a ‘pathogenic’ variant with the ‘classic’ phenotype, as described originally (no clinical information was provided in that report).¹⁸

For p.Ala143Thr (2-point score of 27%, 13 males), the classification could not be established in the present analysis; although experts’ opinion was in favour of a ‘likely benign’ variant, additional research is required (see also Discussion section).

Stage 4: Final review of assigned phenotype classifications

Final review of the 32 of 33 (97%) *GLA* variants that achieved a consensus classification of ‘pathogenic’ (‘classic’ phenotype: n=26, 171 males; ‘later-onset’ phenotype: n=6, 57 males) did not lead to adjustments (table 2). The p.Ala143Thr missense variant remained of uncertain significance (GVUS).

Stage 5: Kaplan–Meier analysis of severe clinical event-free survival

For males, the KM analysis included 2266 adult Fabry patients. Using the workgroup’s 32 consensus male classifications, the *GLA* variants of 228 of 1305 males (17.5%) in the Fabry Registry, previously unclassified in fabry-database.org (middle curve in figure 3A), could be classified as ‘pathogenic’ with the ‘classic’ phenotype (n=171) or the ‘later-onset’ phenotype (n=57) (figure 3C). Males with pathogenic *GLA* variants with a ‘classic’ phenotype reported first severe events at a younger age than those with variants associated with ‘later-onset’ phenotypes. Median age at first severe event (preinclusion (figure 3A) and postinclusion (figure 3E) of consensus classifications, respectively) was 46.8 (n=769) and 46.6 years (n=940) for males with variants associated with ‘classic’ phenotypes, 64.6 (n=192) and 64.6 years (n=249) for males with variants with ‘later-onset’ phenotypes and 51.5 (n=1305) and 51.7 years (n=1077) for males with unclassified variants.

For females, KM analysis included 2795 patients. Using the male consensus classifications, the *GLA* variants of 244 of 1466 females (16.6%) in the Fabry Registry, previously unclassified (middle curve in figure 3B), could be classified as ‘pathogenic’ with ‘classic’ (n=210) or ‘later-onset’ phenotypes (n=34)

Table 2 Workgroup *GLA* variant phenotype classification consensus results; Stages 1–4

Fabry Registry <i>GLA</i> variants (n=33)	Variant type	No. of males with genotype	No. of males with genotype and usable clinical data*	<i>GLA</i> variant 2-point score (%)	<i>GLA</i> variant phenotype consensus†		
					Provisional		Final
					Stage 1	Stage 2	Stages 3 and 4
p.Trp44Cys	Missense	7	5	100	Classic	Classic	Classic
p.Met284Thr	Missense	6	6	100	–	Classic‡	Classic
c.777del	Frameshift	6	5	100	–	Classic‡	Classic
c.1042dup	Frameshift	5	3§	100	–	Classic‡	Classic
p.Ser65_Tyr123del	Large deletion	4	4	100	–	Classic‡	Classic
c.1212_1214del	Small deletion	7	1§	100	–	Classic‡	Classic
p.Ser345Pro	Missense	11	10	87	Unclassified	Classic	Classic
c.370-2A>G	Splice site	5	5	86	–	Classic‡	Classic
c.802-3_802-2del	Splice site	5	4	83	–	Classic‡	Classic
c.57_82del	Frameshift	4	4	83	–	Classic‡	Classic
p.Gln283*	Nonsense	4	3§	80	Classic	Classic	Classic
p.Ala156Thr	Missense	5	4	80	Classic	Classic	Classic
p.Thr194Ile	Missense	5	5	80	Classic	Classic	Classic
c.548-1G>A	Splice site	4	4	80	–	Classic‡	Classic
c.365_371del	Frameshift	6	5	80	–	Classic‡	Classic
p.Glu358del	Small deletion	13	9	77	Classic	Classic	Classic
c.1188_1189insT	Frameshift	5	4	75	Classic	Classic	Classic
p.Ala15Glu	Missense	6	4	71	–	Classic‡	Classic
p.Trp162*	Nonsense	7	6	70	Classic	Classic	Classic
p.Pro259Arg	Missense	28	21	69	Classic	Classic	Classic
p.Trp340Arg	Missense	4	4	67	–	Classic‡	Classic
p.Thr410Ile	Missense	5	5	63	Classic	Classic	Classic
c.568del	Frameshift	4	3§	60	–	Classic‡	Classic
c.639+4A>T	Intronic	6	4	60	–	Classic‡	Classic
c.1000-10G>A	Intronic	4	4	60	–	Classic‡	Classic
p.Ile198Thr	Missense	8	4	43	–	Later-onset‡	Later-onset
c.999+2T>C	Splice site	5	4	40	–	Unclassified‡	Classic
p.Ser238Asn	Missense	11	8	36	Classic	Later-onset	Later-onset
c.639+919G>A	Intronic	13	10	31	–	Later-onset‡	Later-onset
p.Arg363His	Missense	12	5	29	Later-onset	Later-onset	Later-onset
p.Asp322Glu	Missense	7	6	27	Unclassified	Unclassified	Later-onset
p.Ala143Thr	Missense	24	13	27	Unclassified	Unclassified	GVUS¶
p.Ile117Ser	Missense	6	6	25	–	Later-onset‡	Later-onset

*Usable data on angiokeratomas or cornea verticillata status available in the Fabry Registry.

†Phenotypes associated with 'pathogenic' *GLA* variants include 'classic' and 'later-onset' phenotypes.

‡Novel *GLA* variants (n=19) resulting from using a more recent Fabry Registry reconciled data download (July 2016) added during Stage 2 of the process (hence the 'dash' in the Stage one column).

§Null variant present in ≥4 male patients with <4 patients having 2-point scoring data available. Included in the process as the deleterious impact of the variant dominated the expert's overall clinical phenotype assessment as 'classic'.

¶Genetic variant of unknown significance; experts' opinion in favour of a likely benign *GLA* variant.

(figure 3D). The difference between ages at first report of severe events for females with variants with 'classic' or 'later-onset' phenotypes was less pronounced as compared with males. Median age at first severe event (preinclusion (figure 3B) and postinclusion (figure 3F) of consensus classifications, respectively) was 63.4 (n=1073) and 64.0 years (n=1283) for females with 'pathogenic' variants with 'classic' phenotypes, whereas the survival function did not reach 50% in both analyses (median time could not be computed) for those with variants with 'later-onset' phenotypes (n=256 and n=290, respectively). Median age at first severe event (preinclusion and postinclusion of consensus classifications) was 66.7 (n=1466) and 66.8 years (n=1222), respectively, for females with unclassified variants.

For both males and females, adding the workgroup phenotype classifications to the analysis resulted in similar separation for patients within the 'classic' and 'later-onset' phenotype categories

(figure 3E,F, respectively) as compared with the analysis based only on fabry-database.org classifications (figure 3A,B, respectively) (log-rank test p values <0.0001). This observation further validated our classification method.

Comparison of final classifications with other types of variant evidence of pathogenicity

The workgroup phenotype classifications were compared with results obtained from disease databases and results retrieved from in silico programmes. The latter were restricted to missense variants (n=15), as null variants (nonsense, frameshift, splice site and deletions) are considered very strong evidence of pathogenicity.²³ All null variants included in the research had indeed all been classified as 'pathogenic' with the 'classic' phenotype by the workgroup. The results of the comparison are shown in the

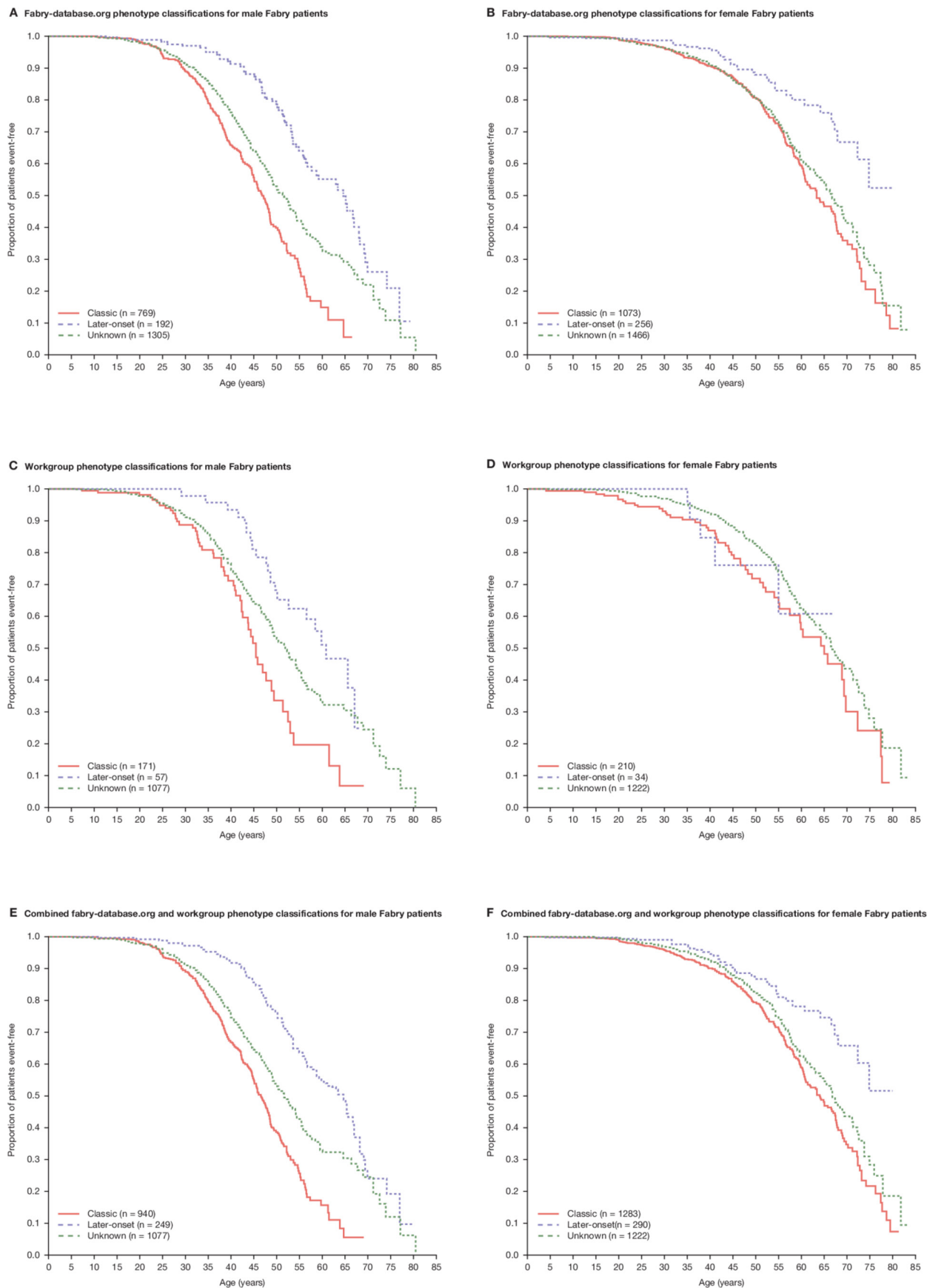


Figure 3 Kaplan–Meier estimates of median age at first reported natural history severe clinical event: male Fabry patients by (A) fabry-database.org phenotype classification, (C) workgroup classification and (E) fabry-database.org and workgroup classifications; female Fabry patients by (B) fabry-database.org phenotype classification, (D) workgroup classification and (F) fabry-database.org and workgroup classifications. Patients with the p.Ala143Thr variant were excluded from the analysis.

online supplementary table 2. Notable observations, taking the aggregate data into account, included the following.

Of the missense variants classified as 'pathogenic' with a 'later-onset' phenotype, two of five had a discrepant 'classic' phenotype classification in the dbFGP database (p.Asp322Glu and p.Ile117Ser). These discordant classifications were primarily based on results of published *in vitro* expression studies.³⁰ In ClinVar, results of assessments of pathogenicity were available for only 7 of 15 missense variants and most were based on reports from clinical testing labs without supporting information. The p.Trp44Cys variant was listed as being of 'uncertain significance' and the p.Trp340Arg and p.Thr410Ile variants as 'likely pathogenic', whereas the workgroup classifications were 'pathogenic' with the 'classic' phenotype (dbFGP database: 'classic'). *In silico* predictions supported pathogenicity. In LOVD, 11 missense variants were listed, but classifications were not available. The *in silico* programmes predicted non-pathogenicity for the p.Arg363His variant, whereas the workgroup and dbFGP classified this variant as 'pathogenic' with a 'later-onset' phenotype. A discrepant MutationTaster prediction of 'polymorphism' was found for the p.Ala15Glu missense variant. The p.Ala143Thr variant remained of 'uncertain significance' since the workgroup opinion was in favour of a 'likely benign' variant and the results from disease databases and *in silico* programmes were inconclusive.

DISCUSSION

A novel, five-stage iterative system for consensus phenotype classification of *GLA* variants that had been reported to the Fabry Registry but had remained unclassified in the fabry-database.org database was developed. The system is based on expert clinical assessment of the Fabry disease genotype-phenotype workgroup members, evaluation of published literature, clinical evidence of variant pathogenicity in the Fabry Registry (2-point scoring system), and severe clinical event-free survival analyses. Final workgroup consensus classification of 'pathogenic' was achieved for 32 of 33 *GLA* variants, including 26 classifications as 'pathogenic' with a 'classic' phenotype and 6 with the 'later-onset' phenotype. The p.Ala143Thr missense variant remained of uncertain significance.

Ascertaining genotype-phenotype associations in Fabry disease is complicated by the rarity of the disease, the striking allelic heterogeneity with nearly 1000 known *GLA* variants, the variation in clinical expressivity and the lack of published clinical data that could support adjudications. Consequently, phenotype classification is currently lacking for many *GLA* variants. Although progress has been made in elucidating the natural history of Fabry disease, a better understanding of genotype-phenotype relationships is needed to predict disease progression, improve the definition of interventional studies, set expectations regarding therapeutic outcomes and assist in the selection of modality for various current and future treatments for Fabry disease.^{31 32} Published therapeutic recommendations highlight the importance of an individualised approach to the care of Fabry patients reflecting, among other things, genotype, phenotype and gender.²² Therefore, accurate phenotype classification of *GLA* variants, including precise clinical differentiation between the 'classic' and 'later-onset' pathogenic phenotypes, and reclassification once new supporting data become available, can be of benefit to the clinical care of patients suffering from this rare disorder. For example, we found that for 171 male patients enrolled in the Fabry Registry, their previously unclassified *GLA* variants could be classified as 'pathogenic' with the 'classic' phenotype. With this knowledge, caregivers could tailor their clinical management strategy to the needs of the patients with this

severe, progressive phenotype. Available enzyme replacement therapies (ERTs) include agalsidase beta (1 mg/kg body weight every 2 weeks (EOW)) and agalsidase alfa (0.2 mg/kg EOW). Chaperone therapy is restricted to patients with amenable variants, for which pathogenicity should have been documented.²²

Currently, there is a lack of reference studies in which patients with pathogenic variants with 'classic' and 'later-onset' phenotypes are analysed separately. This is important, as the disease generally progresses at different rates, and some organ involvement may be delayed or absent in 'later-onset' phenotypes of Fabry disease. A recent study stratified ERT-treated male and female patients with 'pathogenic' variants by 'classic' and 'later-onset' phenotypes based on presence/absence of characteristic Fabry disease symptoms and, in males, residual enzyme activity. Not surprisingly, that study found that phenotype (ie, 'classic' or 'later-onset') is among the strong predictors of the risk to develop clinically important events and of decline in renal function.²¹

There remains doubt as to whether the p.Ala143Thr missense variant should be considered pathogenic or not, with many lines of evidence in favour of a 'likely benign' variant.^{33 34} Much of the debate concerning this 'likely benign' variant has arisen as a result of screening programmes which have identified p.Ala143Thr at a relatively high frequency (allele frequencies, ExAC: European population, 0.001271; overall population, 0.0007748; that is, at frequencies higher than frequencies of 0.0007502 and 0.0004331, respectively, reported for the p.Ser126Gly variant which was classified as 'likely benign' in the dbFGP database), with conclusions of pathogenicity based on unspecific clinical symptoms in individuals rather than tissue biopsies.^{33 34} A retrospective study has shown that most males with the p.Ala143Thr variant present with significantly high residual α -Gal activity, normal lyso-GL-3 levels and absence of renal and cardiac involvement, leading those authors to conclude that it is a 'likely benign' variant,³³ whereas another study showed cardiac symptoms in 6 of 10 patients with this variant but in association with normal α -Gal activity levels.³⁵ It has been hypothesised that, in the pedigree of the patient originally described by Anderson,³⁶ a second yet undiscovered variant of *GLA* may actually lead to manifestations of Fabry disease rather than p.Ala143Thr itself. Contributing to the diagnostic dilemma of this genotype, there is some evidence that unspecific signs and symptoms described are unrelated to Fabry disease based on biopsies in individuals with the p.Ala143Thr variant.³⁷ Therefore, further research needs to detail the medical history, clinical examination, biological workup and biomarkers of Fabry disease (ie, lyso-GL-3) as well as tissue biopsy data when possible, obtained in individuals with this variant who develop unspecific symptoms before claiming these are Fabry disease-related.³⁸

Given the X-linked inheritance of Fabry disease, we suggest assessing *GLA* variant pathogenicity in male patients if sufficient numbers of patients with the relevant clinical data exist, because of the multifactorial phenotypic variability in females with the *GLA* variant. Heterozygous females harbouring a pathogenic variant are at risk of developing the same form of phenotype as observed in males who have the variant; however, many will develop only incomplete phenotypes and some may remain asymptomatic. Comparison of severe clinical event-free survival for patients enrolled in the Fabry Registry based on existing phenotype classifications with the survival of patients with the previously unclassified *GLA* variants added to the analysis showed similar survival distributions for 'pathogenic' variants with 'classic' or 'later-onset' phenotypes for each of the sexes. This may suggest that the proportions of patients with 'classic' and 'later-onset' phenotypes in the

cohorts with unclassified phenotypes approximate the proportions in the overall male and female cohorts with established phenotypes. Thus, this method based on severe clinical events observed in male and female patients provided further validation of the workgroup's phenotype classification efforts.

We also observed that females with variants associated with 'later-onset' phenotypes may not have enough severe events to randomise them into clinical trials, whereas in male patients with these variants, more severe events were documented.

As recommended by the ACMG/AMP,²³ our final classifications were compared with other lines of evidence of pathogenicity of the studied *GLA* variants. In silico programmes have not been clinically validated for prediction of *GLA* variant pathogenicity, are not able to discriminate between subclasses of predictions of 'pathogenic' (ie, 'classic' vs 'later-onset' phenotypes), can only be used for prediction of pathogenicity of missense or splice-site variants and tend to have low specificity. We found only one discrepancy (p.Arg363His missense variant) between the combined prediction from three programmes and phenotype classification from the workgroup and the dbFGP database. There were two discrepancies between our classification of 'pathogenic' with a 'later-onset' phenotype and classifications available in the dbFGP database. However, the dbFGP classification of those two variants relied only on results from in vitro expression studies,^{30–39} in the absence of clinical reports. Although such studies supportive of a damaging effect are recognised as strong evidence of pathogenicity,²³ the results should be interpreted with caution, as expression studies may not reflect the complexities of the in vivo environment. One of the variants that was classified differently is the p.Asp322Glu variant. Based on diffuse angiokeratoma and cornea verticillata data, workgroup consensus reached at the end of 2016 was that this 'pathogenic' variant is associated with a 'later-onset' phenotype. This is strengthened by a recent paper indicating the absence of significant renal involvement in this variant.²⁸ *GLA* variant information available in the disease databases ClinVar and LOVD was generally limited, and supporting information was particularly lacking in the LOVD. To expand the body of evidence, researchers, geneticists and clinicians are encouraged to share information on *GLA* variants by submitting complete clinical data to existing major databases and publishing their molecular findings together with precise clinical descriptions.

We recognise several limitations to our *GLA* variant phenotype classification system. There may have been patient selection bias towards enrolment of more severely affected patients in the Fabry Registry, and 2-point scoring data (angiokeratomas, cornea verticillata) were not available for all enrolled patients, indicating incomplete recording of clinical assessments. Diffuse or widespread angiokeratomas are considered a hallmark of classic Fabry disease but the presence of a more limited number of 'red spots' on the skin is not pathognomonic and may have accounted for increased scoring for 'later-onset' variants or the p.Ala143Thr variant. Similarly, the differential diagnosis of Fabry disease cornea verticillata includes a phenocopy that may be drug-induced and the result of amiodarone intake in a subset of patients with Fabry disease with cardiac arrhythmia.¹ The *GLA* variant sample size used for testing the precision of the 2-point scoring system was small, and the age of the patients (although all were adult males) is not accounted for in the 2-point scoring process. Furthermore, the fabry-database.org database relies on curation and quality of the published literature.²⁵ Last, the analysis did not include biochemical parameters performed by a single central reference lab (enzyme activity, lyso-GL-3) and no in vitro *GLA* variant expression studies could be performed.

In conclusion, our validated approach for clinical phenotyping based on clinical data from Fabry patients enrolled in the Fabry Registry was able to predict the phenotypic manifestations for *GLA* variants that had no prior phenotype classification documented in the fabry-database.org database. Clinical pathogenicity associated with a particular *GLA* variant defined in affected males appears to have predictive value and generally correlates with risk for affected females. The newly established phenotype classifications can be of benefit to the clinical care of Fabry patients harbouring these *GLA* variants.

Electronic database information

URLs for Fabry disease-specific variant databases, broader genetic variants databases and in silico programmes referred to in this article are as follows:

- ▶ ClinVar database, <https://www.ncbi.nlm.nih.gov/clinvar/> (last accessed February 2019).
- ▶ ExAC Database (gene: *GLA*), <http://exac.broadinstitute.org/gene/ENSG00000102393> (last accessed February 2019).
- ▶ Fabry-database.org *GLA* variant database, <http://fabry-database.org/mutants> (last accessed February 2019).
- ▶ Human Gene Mutation Database (gene: *GLA*), <http://www.hgmd.cf.ac.uk/ac/gene.php?gene=GLA> (last accessed December 2019).
- ▶ International Fabry Disease Genotype–Phenotype Database (dbFGP), <http://dbfgp.org/dbFgp/fabry/> (last accessed February 2019).
- ▶ Leiden Open Variation Database, <http://www.lovd.nl/3.0/home> (last accessed February 2019).
- ▶ MutationTaster, <http://www.mutationtaster.org/> (last accessed February 2019).
- ▶ Polymorphism Phenotyping v2, <http://genetics.bwh.harvard.edu/pph2/> (last accessed February 2019).
- ▶ SIFT, http://provean.jcvi.org/genome_submit_2.php (last accessed February 2019).

Author affiliations

¹French Referral Centre for Fabry disease, Division of Medical Genetics, University of Versailles, Paris-Saclay University, Montigny, France

²Department of Genetics, São João Hospital Centre & Faculty of Medicine, University of Porto, Porto, Portugal

³Instituto de Investigação e Inovação em Saúde (i3S), University of Porto, Porto, Portugal

⁴Nephrology Service, Research Center, Hôpital du Sacré-Coeur de Montréal, Montreal, Québec, Canada

⁵Departments of Medicine, Pharmacology and Physiology, University of Montreal, Montreal, Québec, Canada

⁶Department of Pediatrics, Asan Medical Center Children's Hospital, University of Ulsan College of Medicine, Seoul, South Korea

⁷Division of Human Genetics, Cincinnati Children's Hospital Medical Center, Cincinnati, Ohio, USA

⁸Department of Pediatrics, University of Cincinnati College of Medicine, Cincinnati, Ohio, USA

⁹Sanofi Genzyme, Cambridge, Massachusetts, USA

¹⁰Department of Neurology, Fundación Para el Estudio de Enfermedades Neurometabólicas (FESEN), Buenos Aires, Argentina

¹¹Division of Nephrology, University Clinic, University of Würzburg, Würzburg, Germany

¹²Department of Human Genetics, Emory University School of Medicine, Atlanta, Georgia, USA

¹³Division of Nephrology, Department of Medicine, University of Alabama at Birmingham, Birmingham, Alabama, USA

Acknowledgements The authors would like to thank the patients who agreed to participate in the Fabry Registry and Badari Gudivada (Sanofi Genzyme) for statistical programming support.

Contributors DPG, JPO, DGB, HWY, RJH, JP, CW, WRW and DGW are members of the Fabry disease genotype–phenotype workgroup. DPG drafted the article. All authors have critically reviewed the manuscript for important intellectual content

and are responsible for all content and editorial decisions. All authors approved the final version of the manuscript and received no honoraria related to the development of this publication.

Funding This research was funded by Sanofi Genzyme, the sponsor of the Fabry Registry. The authors received editorial/writing support in the preparation of this manuscript from Tom Rouwette of Excerpta Medica, funded by Sanofi Genzyme, and Hans Ebels of Sanofi Genzyme. DPG was supported by the Plan National Maladies Rares of the French Ministry of Health.

Disclaimer The funder had a role in Fabry Registry data collection and analysis.

Competing interests DPG is a consultant for Sanofi Genzyme and Takeda/Shire, was an investigator in clinical trials sponsored by Amicus Therapeutics and Sanofi Genzyme and has received speaker honoraria and travel support from Amicus Therapeutics, Sanofi Genzyme and Takeda/Shire. JPO has received consulting honoraria and unrestricted research grants and funding for research projects from Sanofi Genzyme, has received speaker honoraria from Sanofi Genzyme and Takeda/Shire and has received conference and travel support from Amicus Therapeutics, Sanofi Genzyme and Takeda/Shire. DGB has received speaker honoraria from Amicus Therapeutics, Sanofi Genzyme and Takeda/Shire. HWY has received honoraria from Sanofi Genzyme. RJH has received consulting honoraria from Sanofi Genzyme, Amicus Therapeutics, Protalix Corporation and Takeda/Shire, was an investigator in clinical trials sponsored by Amicus Therapeutics, Sanofi Genzyme and Takeda/Shire and received research funding from Sanofi Genzyme, Protalix Corporation and Amicus Therapeutics; these activities have been monitored and found to be in compliance with the conflict of interest policies at Cincinnati Children's Hospital Medical Center. RL is an employee of Sanofi Genzyme. JP has received honoraria and travel support from Amicus Therapeutics, Protalix Corporation, Sanofi Genzyme and Takeda/Shire. CW has received research support from Sanofi Genzyme and is a consultant for Actelion Pharmaceuticals, Protalix Corporation, Boehringer Ingelheim GmbH and Sanofi Genzyme. WRW consults for Sanofi Genzyme and was an investigator in clinical studies and trials sponsored by Amicus Therapeutics, Protalix Corporation, Sanofi Genzyme and Takeda/Shire and has received research funding from Sanofi Genzyme, Amicus Therapeutics and Takeda/Shire; these activities are monitored and are in compliance with the conflict of interest policies at Emory University School of Medicine. DGW received consulting honoraria from Amicus Therapeutics, Sanofi Genzyme, Actelion Pharmaceuticals, AVROBIO, Freeline Therapeutics and Protalix Biotherapeutics and has received research funding from Amicus Therapeutics and Sanofi Genzyme. DPG, JPO, DGB, HWY, RJH, JP and CW are Regional or International Fabry Registry Board members and have received Fabry Registry Board honoraria.

Patient consent for publication Not required.

Ethics approval The Fabry Registry protocol, informed consent form and any locally required authorisation documents are reviewed and approved by the local fully constituted Institutional Review Board or Independent Ethics Committee unless the site provides the Registry with documentation that approval is not required or has been waived.

Provenance and peer review Not commissioned; externally peer reviewed.

Data availability statement Data are available on reasonable request. Qualified researchers may request access to patient-level data and related study documents including the clinical study report, study protocol with any amendments, blank case report form, statistical analysis plan and dataset specifications. Patient-level data will be anonymised and study documents will be redacted to protect the privacy of trial participants. Further details on Sanofi's data sharing criteria, eligible studies and process for requesting access can be found at: <https://www.clinicalstudydatarequest.com>.

Open access This is an open access article distributed in accordance with the Creative Commons Attribution Non Commercial (CC BY-NC 4.0) license, which permits others to distribute, remix, adapt, build upon this work non-commercially, and license their derivative works on different terms, provided the original work is properly cited, appropriate credit is given, any changes made indicated, and the use is non-commercial. See: <http://creativecommons.org/licenses/by-nc/4.0/>.

ORCID iD

Dominique P Germain <http://orcid.org/0000-0002-8355-007X>

REFERENCES

- 1 Germain DP. Fabry disease. *Orphanet J Rare Dis* 2010;5:30.
- 2 Ashley GA, Shabbeer J, Yasuda M, Eng CM, Desnick RJ. Fabry disease: twenty novel alpha-galactosidase A mutations causing the classical phenotype. *J Hum Genet* 2001;46:192–6.
- 3 Ashton-Prolla P, Tong B, Shabbeer J, Astrin KH, Eng CM, Desnick RJ. Fabry disease: twenty-two novel mutations in the alpha-galactosidase A gene and genotype/phenotype correlations in severely and mildly affected hemizygotes and heterozygotes. *J Investig Med* 2000;48:227–35.
- 4 Davies JP, Eng CM, Hill JA, Malcolm S, MacDermot K, Winchester B, Desnick RJ. Fabry disease: fourteen α -galactosidase A mutations in unrelated families from the United Kingdom and other European countries. *Eur J Hum Genet* 1996;4:219–24.
- 5 Eng CM, Ashley GA, Burgert TS, Enriquez AL, D'Souza M, Desnick RJ. Fabry disease: thirty-five mutations in the alpha-galactosidase A gene in patients with classic and variant phenotypes. *Mol Med* 1997;3:174–82.
- 6 Eng CM, Niehaus DJ, Enriquez AL, Burgert TS, Ludman MD, Desnick RJ. Fabry disease: twenty-three mutations including sense and antisense CpG alterations and identification of a deletion hot-spot in the alpha-galactosidase A gene. *Hum Mol Genet* 1994;3:1795–9.
- 7 Germain DP, Biasotto M, Tosi M, Meo T, Kahn A, Poenaru L. Fluorescence-assisted mismatch analysis (FAMA) for exhaustive screening of the alpha-galactosidase A gene and detection of carriers in Fabry disease. *Hum Genet* 1996;98:719–26.
- 8 Germain DP. A new phenotype of Fabry disease with intermediate severity between the classical form and the cardiac variant. *Contrib Nephrol* 2001;136:234–40.
- 9 Germain DP, Poenaru L. Fabry disease: identification of novel alpha-galactosidase A mutations and molecular carrier detection by use of fluorescent chemical cleavage of mismatches. *Biochem Biophys Res Commun* 1999;257:708–13.
- 10 Germain DP, Shabbeer J, Cotigny S, Desnick RJ. Fabry disease: twenty novel alpha-galactosidase A mutations and genotype-phenotype correlations in classical and variant phenotypes. *Mol Med* 2002;8:306–12.
- 11 Ishii S, Kase R, Sakuraba H, Suzuki Y. Characterization of a mutant alpha-galactosidase gene product for the late-onset cardiac form of Fabry disease. *Biochem Biophys Res Commun* 1993;197:1585–9.
- 12 Ishii S, Nakao S, Minamikawa-Tachino R, Desnick RJ, Fan J-Q. Alternative splicing in the alpha-galactosidase A gene: increased exon inclusion results in the Fabry cardiac phenotype. *Am J Hum Genet* 2002;70:994–1002.
- 13 Ishii S, Sakuraba H, Suzuki Y. Point mutations in the upstream region of the alpha-galactosidase A gene exon 6 in an atypical variant of Fabry disease. *Hum Genet* 1992;89:29–32.
- 14 Ploos van Amstel JK, Jansen RP, de Jong JG, Hamel BC, Wevers RA. Six novel mutations in the alpha-galactosidase A gene in families with Fabry disease. *Hum Mol Genet* 1994;3:503–5.
- 15 Sakuraba H, Oshima A, Fukuhara Y, Shimamoto M, Nagao Y, Bishop DF, Desnick RJ, Suzuki Y. Identification of point mutations in the alpha-galactosidase A gene in classical and atypical hemizygotes with Fabry disease. *Am J Hum Genet* 1990;47:784–9.
- 16 Shabbeer J, Yasuda M, Luca E, Desnick RJ. Fabry disease: 45 novel mutations in the alpha-galactosidase A gene causing the classical phenotype. *Mol Genet Metab* 2002;76:23–30.
- 17 Shabbeer J, Yasuda M, Benson SD, Desnick RJ. Fabry disease: identification of 50 novel alpha-galactosidase A mutations causing the classic phenotype and three-dimensional structural analysis of 29 missense mutations. *Hum Genomics* 2006;2:297–309.
- 18 Topaloglu AK, Ashley GA, Tong B, Shabbeer J, Astrin KH, Eng CM, Desnick RJ. Twenty novel mutations in the α -galactosidase A gene causing Fabry disease. *Mol Med* 1999;5:806–11.
- 19 Cammarata G, Fatuzzo P, Rodolico MS, Colomba P, Sicurella L, Iemolo F, Zizzo C, Alessandro R, Bartolotta C, Duro G, Monte I. High variability of Fabry disease manifestations in an extended Italian family. *Biomed Res Int* 2015;2015:504784
- 20 Rigoldi M, Concolino D, Morrone A, Pieruzzi F, Ravaglia R, Furlan F, Santus F, Strisciuglio P, Torti G, Parini R. Intrafamilial phenotypic variability in four families with Anderson-Fabry disease. *Clin Genet* 2014;86:258–63.
- 21 Arends M, Wanner C, Hughes D, Mehta A, Oder D, Watkinson OT, Elliott PM, Linthorst GE, Wijburg FA, Biegstraaten M, Hollak CE. Characterization of classical and nonclassical Fabry disease: a multicenter study. *JASN* 2017;28:1631–41.
- 22 Ortiz A, Germain DP, Desnick RJ, Politei J, Mauer M, Burlina A, Eng C, Hopkin RJ, Laney D, Linhart A, Waldek S, Wallace E, Weidemann F, Wilcox WR. Fabry disease revisited: management and treatment recommendations for adult patients. *Mol Genet Metab* 2018;123:416–27.
- 23 Richards S, Aziz N, Bale S, Bick D, Das S, Gastier-Foster J, Grody WW, Hegde M, Lyon E, Spector E, Voelkerding K, Rehm HL, ACMG Laboratory Quality Assurance Committee. Standards and guidelines for the interpretation of sequence variants: a joint consensus recommendation of the American College of Medical Genetics and Genomics and the Association for Molecular Pathology. *Genet Med* 2015;17:405–24.
- 24 Echevarria L, Benistan K, Toussaint A, Dubourg O, Hagege AA, Eladari D, Jabbour F, Beldjord C, De Mazancourt P, Germain DP. X-chromosome inactivation in female patients with Fabry disease. *Clin Genet* 2016;89:44–54.
- 25 Saito S, Ohno K, Sakuraba H. Fabry-database.org: database of the clinical phenotypes, genotypes and mutant α -galactosidase A structures in Fabry disease. *J Hum Genet* 2011;56:467–8.
- 26 den Dunnen JT. Sequence variant descriptions: HGVS nomenclature and Mutalyzer. *Curr Protoc Hum Genet* 2016;90:7.13.1–19.
- 27 Lee BH, Heo SH, Kim G-H, Park J-Y, Kim W-S, Kang D-H, Choe KH, Kim W-H, Yang SH, Yoo H-W. Mutations of the GLA gene in Korean patients with Fabry disease and frequency of the E66Q allele as a functional variant in Korean newborns. *J Hum Genet* 2010;55:512–7.
- 28 Adalsteinsdottir B, Palsson R, Desnick RJ, Gardarsdottir M, Teekakirikul P, Maron M, Appelbaum E, Neisius U, Maron BJ, Burke MA, Chen B, Pagant S, Madsen

- CV, Danielsen R, Arngrimsson R, Feldt-Rasmussen U, Seidman JG, Seidman CE, Gunnarsson GT. Fabry disease in families with hypertrophic cardiomyopathy: clinical manifestations in the classic and later-onset phenotypes. *Circ Cardiovasc Genet* 2017;10:e001639.
- 29 Breathnach R, Chambon P. Organization and expression of eucaryotic split genes coding for proteins. *Annu Rev Biochem* 1981;50:349–83.
- 30 Benjamin ER, Della Valle MC, Wu X, Katz E, Pruthi F, Bond S, Bronfin B, Williams H, Yu J, Bichet DG, Germain DP, Giugliani R, Hughes D, Schiffmann R, Wilcox WR, Desnick RJ, Kirk J, Barth J, Barlow C, Valenzano KJ, Castelli J, Lockhart DJ. The validation of pharmacogenetics for the identification of Fabry patients to be treated with migalastat. *Genet Med* 2017;19:430–8.
- 31 Germain DP. Fabry disease: the need to stratify patient populations to better understand the outcome of enzyme replacement therapy. *Clin Ther* 2007;29:S17–8.
- 32 Wanner C, Arad M, Baron R, Burlina A, Elliott PM, Feldt-Rasmussen U, Fomin VV, Germain DP, Hughes DA, Jovanovic A, Kantola I, Linhart A, Mignani R, Monserrat L, Namdar M, Nowak A, Oliveira J-P, Ortiz A, Pieroni M, Spada M, Tylki-Szymańska A, Tøndel C, Viana-Baptista M, Weidemann F, Hilz MJ. European expert consensus statement on therapeutic goals in Fabry disease. *Mol Genet Metab* 2018;124:189–203.
- 33 Lenders M, Weidemann F, Kurschat C, Canaan-Kühl S, Duning T, Stypmann J, Schmitz B, Reiermann S, Krämer J, Blaschke D, Wanner C, Brand S-M, Brand E. Alpha-galactosidase A p.A143T, a non-Fabry disease-causing variant. *Orphanet J Rare Dis* 2016;11:54.
- 34 Terry W, Vanholder R, Hemelsoet D, Leroy BP, Van Biesen W, De Schoenmakere G, Wuyts B, Claes K, De Backer J, De Paepe G, Fogo A, Praet M, Poppe B. Questioning the Pathogenic Role of the GLA p.Ala143Thr "Mutation" in Fabry Disease: Implications for Screening Studies and ERT. *JIMD Rep* 2013;8:101–8.
- 35 De Brabander I, Yperzeele L, Ceuterick-De Groote C, Brouns R, Baker R, Belachew S, Delbecq J, De Keulenaer G, Dethy S, Eyskens F, Fumal A, Hemelsoet D, Hughes D, Jeangette S, Nuytten D, Redondo P, Sadzot B, Sindic C, Sheorajpanday R, Thijs V, Van Broeckhoven C, De Deyn PP. Phenotypical characterization of α -galactosidase A gene mutations identified in a large Fabry disease screening program in stroke in the young. *Clin Neurol Neurosurg* 2013;115:1088–93.
- 36 Gaggl M, El-Hadi S, Aigner C, Sunder-Plassmann G. The renal history of Fabry disease. *G Ital Nefrol* 2016;33:1–4.
- 37 Smid BE, Hollak CE, Poorthuis BJ, van den Bergh Weerman MA, Florquin S, Kok WE, Lekanne Deprez RH, Timmermans J, Linthorst GE. Diagnostic dilemmas in Fabry disease: a case series study on GLA mutations of unknown clinical significance. *Clin Genet* 2015;88:161–6.
- 38 Germain DP, Jurca-Simina IE. Principles of human genetics and Mendelian inheritance. In: Burlina AP, ed. *Neurometabolic hereditary diseases of adults*. Cham, Switzerland: Springer, 2018: 1–28.
- 39 Lukas J, Giese A-K, Markoff A, Grittner U, Kolodny E, Mascher H, Lackner KJ, Meyer W, Wree P, Saviouk V, Rolfs A. Functional characterisation of alpha-galactosidase A mutations as a basis for a new classification system in Fabry disease. *PLoS Genet* 2013;9:e1003632.

SUPPLEMENTARY FILE, includes:

Supplementary Methods
 Supplementary References
 Supplementary Table 1
 Supplementary Table 2

SUPPLEMENTARY METHODS**Details on *GLA* variant 2-point scoring and validation**

The *GLA* variant 2-point scoring system derived from patients' Fabry Registry data was developed based on a modification of published criteria for classic Fabry disease in male patients.¹ Briefly, van der Tol et al.¹ used strict criteria to identify patients with a classic phenotype based on severely decreased or absent α -galactosidase activity in leukocytes of males and presence of at least one of the Fabry disease-specific clinical characteristics of acroparaesthesia, angiokeratomas and cornea verticillata. In the present initiative, acroparaesthesia was not used as a criterion because it was deemed to be too subjective and may result from carpal tunnel syndrome, which appears to have a higher prevalence in Fabry patients than in the general population.² α -galactosidase activity records were insufficient for the assessment. The *GLA* variant 2-point scores used in Stage 2 were calculated as follows: Total of positive Fabry Registry responses of diffuse angiokeratomas or cornea verticillata for the *GLA* variant divided by the total Fabry Registry responses ('yes' and 'no') of diffuse angiokeratomas and cornea verticillata status for that variant as a percentage. An example of calculation is provided below.

Male patients with the specific <i>GLA</i> variant	Fabry Registry responses			
	Available	Angiokeratomas 'Yes' (present) or 'No' (absent)	Available	Cornea verticillata 'Yes' (present) or 'No' (absent)
Patient #1	Yes	Yes	Yes	Yes
Patient #2	No	-	Yes	Yes
Patient #3	Yes	Yes	Yes	No
Patient #4	Yes	Yes	No	-

2-point score calculation:

- Total of positive responses of angiokeratomas or cornea verticillata = 5.
- Total of responses ('yes' and 'no') of angiokeratomas or cornea verticillata status = 6.
- 2-point score = 0.83 (i.e. 5/6) X 100% = 83%

SUPPLEMENTARY REFERENCES

1. van der Tol L, Smid BE, Poorthuis BJ, Biegstraaten M, Deprez RH, Linthorst GE, Hollak CE. A systematic review on screening for Fabry disease: prevalence of individuals with genetic variants of unknown significance. *J Med Genet* 2014;51:1–9.
2. Ghali J, Murugasu A, Day T, Nicholls K. Carpal tunnel syndrome in Fabry disease. *JIMD Rep* 2012;2:17–23.

Supplementary Table 1. The 55 *GLA* variants included in Stage 1. The variants had been reported to the Fabry Registry for ≥ 5 Fabry patients (males or females) and lacked fabry-database.org phenotype classification.

GLA variants (n=55)	Variant type	Classification in fabry-database.org^a	Preliminary workgroup classification in Stage 1 for variants subsequently included in Stage 2^b
p.Gln283*	Nonsense	Blank	Classic
p.Trp162*	Nonsense	Blank	Classic
p.Trp44Cys	Missense	Blank	Classic
p.Ser345Pro	Missense	Blank	Unclassified
p.Ala156Thr	Missense	Blank	Classic
p.Thr194Ile	Missense	Blank	Classic
p.Pro259Arg	Missense	Blank	Classic
p.Thr410Ile	Missense	Blank	Classic
p.Ser238Asn	Missense	Blank	Classic
p.Arg363His	Missense	Blank	Later-onset
p.Ala143Thr	Missense	Blank	Unclassified
p.Asp322Glu	Missense	Blank	Unclassified
c.1188_1189ins	Frameshift	Absent	Classic
p.Glu358del	Small deletion	Blank	Classic
p.Gln416*	Nonsense	Blank	Not included in Stage 2
p.Asp136Tyr	Missense	Blank	Not included in Stage 2
p.Ile242Phe	Missense	Blank	Not included in Stage 2
p.Leu16Pro	Missense	Blank	Not included in Stage 2
p.Cys63Tyr	Missense	Blank	Not included in Stage 2
p.Ile232Thr	Missense	Blank	Not included in Stage 2
p.Glu7*	Nonsense	Blank	Not included in Stage 2
p.Trp47*	Nonsense	Blank	Not included in Stage 2
p.Leu243*	Nonsense	Blank	Not included in Stage 2
p.Gln280*	Nonsense	Absent	Not included in Stage 2
p.Leu403*	Nonsense	Blank	Not included in Stage 2
p.Phe18Ser	Missense	Blank	Not included in Stage 2
p.Cys52Gly	Missense	Blank	Not included in Stage 2
p.Pro60Leu	Missense	Blank	Not included in Stage 2
p.Gly85Asn	Missense	Blank	Not included in Stage 2
p.Cys90Arg	Missense	Absent	Not included in Stage 2
p.Asp92Asn	Missense	Blank	Not included in Stage 2
p.Leu129Pro	Missense	Blank	Not included in Stage 2
p.Ile270Thr	Missense	Blank	Not included in Stage 2
p.Ala292Thr	Missense	Blank	Not included in Stage 2
p.Leu294Ser	Missense	Absent	Not included in Stage 2
p.Leu300Pro	Missense	Blank	Not included in Stage 2
p.Gly325Asp	Missense	Blank	Not included in Stage 2

GLA variants (n=55)	Variant type	Classification in fabry-database.org^a	Preliminary workgroup classification in Stage 1 for variants subsequently included in Stage 2^b
p.Gly325Ser	Missense	Absent	Not included in Stage 2
p.Ile354Lys	Missense	Blank	Not included in Stage 2
p.Arg363Pro	Missense	Absent	Not included in Stage 2
p.Thr412Asn	Missense	Absent	Not included in Stage 2
p.Leu415Pro	Missense	Blank	Not included in Stage 2
g.IVS2-2A>G	Splice site	Blank	Not included in Stage 2
g.IVS3-1G>C	Splice site	Blank	Not included in Stage 2
g.IVS4-2A>T	Splice site	Blank	Not included in Stage 2
g.IVS5-2_-3del ^c	Splice site	Absent	Not included in Stage 2
g.IVS5-3_-2del ^c	Splice site	Absent	Not included in Stage 2
g.IVS6-1G>A	Splice site	Blank	Not included in Stage 2
g.IVS6-10G>A	Splice site	Absent	Not included in Stage 2
c.265delC	Frameshift	Absent	Not included in Stage 2
c.734_792del	Frameshift	Absent	Not included in Stage 2
c.993_994insA	Frameshift	Absent	Not included in Stage 2
c.EX2del	Large deletion	Absent	Not included in Stage 2
p.Arg404del	Small deletion	Blank	Not included in Stage 2
p.G395_F396ins	Small insertion	Absent	Not included in Stage 2

^a fabry-database.org classification field “blank” (not classified) or classification “absent” (*GLA* variant not listed).

^b Preliminary classification based on workgroup member’s personal clinical observations made in Fabry patients with *GLA* variants included in the research, on evaluation of published scientific and medical literature and, if possible, on review of the variant’s potential deleterious impact on the *GLA* gene and/or α -galactosidase function in light of established molecular mechanisms. Phenotypes associated with ‘pathogenic’ *GLA* variants include ‘classic’ and ‘later-onset’ phenotypes. Reasons for not including variants in Stage 2 were insufficient 2-point scoring data (angiokeratomas or cornea verticillata) for a particular variant or categorization of variant as ‘likely benign’ or ‘benign’ not warranting in-depth investigation (see Methods section).

^c *GLA* variants may be identical.

*, translation termination codon.

Supplementary table 2. Comparison of workgroup consensus phenotype classifications with results from disease databases and prediction algorithms

GLA variants (n=33)	Variant type	Fabry Disease Genotype-Phenotype Workgroup Phenotype classification	dbFGP disease database Phenotype classification	ClinVar disease database Phenotype classification	LOVD disease database		PolyPhen-2 prediction algorithm		SIFT prediction algorithm		MutationTaster prediction algorithm	
					Phenotype classification	Affecting GLA function (as reported)	Score, range 0-1 (missense variants only)	Prediction	Score, cut-off <0.05 (missense variants only)	Prediction	Score, range 0-1 (missense variants only)	Prediction
p.Gln283*	Nonsense	Classic	Classic	Pathogenic	NR	Affects function	NA	NA	NA	NA	1	Disease causing
p.Trp162*	Nonsense	Classic	Classic	Pathogenic	NR	Affects function	NA	NA	NA	NA	1	Disease causing
p.Trp44Cys	Missense	Classic	Classic	Uncertain	NR	Effect unknown	1.000	Probably damaging	0.000	Damaging	0.999	Disease causing
p.Met284Thr	Missense	Classic	Classic	NR	NR	Affects function	1.000	Probably damaging	0.001	Damaging	0.999	Disease causing
p.Ser345Pro	Missense	Classic	Classic	NR	NR	Affects function	0.972	Probably damaging	0.059	Tolerated	0.865	Disease causing
p.Ala156Thr	Missense	Classic	Classic	Pathogenic	NR	Affects function	1.000	Probably damaging	0.003	Damaging	0.999	Disease causing
p.Thr194Ile	Missense	Classic	Likely classic	NR	NR	Affects function	1.000	Probably damaging	0.000	Damaging	0.999	Disease causing
p.Ala15Glu	Missense	Classic	Classic	NR	NR	NR	0.532	possibly damaging	NR	NR	0.999	Polymorphism
p.P70259A>V	Missense	Classic	Classic	Pathogenic	NR	Affects function	1.000	Probably damaging	0.000	Damaging	0.999	Disease causing
p.Trp340A>E	Missense	Classic	Classic	Likely pathogenic	NR	Affects function	1.000	Probably damaging	0.000	Damaging	0.999	Disease causing
p.Thr410Ile	Missense	Classic	Classic	Likely pathogenic	NR	Affects function	1.000	Probably damaging	0.002	Damaging	0.998	Disease causing
p.Ile198Thr	Missense	Later-onset	Later-onset	Conflicting interpretations: Likely pathogenic (n=2); Uncertain (n=1)	NR	NR	1.000	Probably damaging	0.002	Damaging	0.999	Disease causing
p.Ser238Asn	Missense	Later-onset	Later-onset	Pathogenic	NR	Affects function	1.000	Probably damaging	0.021	Damaging	0.999	Disease causing
p.Arg363His	Missense	Later-onset	Later-onset	Pathogenic	NR	Affects function	0.406	Benign	0.465	Tolerated	0.999	Polymorphism
p.Ala143Thr	Missense	zyJYS*	Benign	Conflicting interpretations: Pathogenic (n=2); Likely pathogenic (n=3); Uncertain (n=7)	NR	Affects function	1.000	Probably damaging	0.004	Damaging	0.999	Disease causing
p.Asp322Glu	Missense	Later-onset	Classic	Pathogenic	NR	NR	0.999	Probably damaging	0.000	Damaging	0.975	Disease causing
p.Ile117Ser	Missense	Later-onset	Classic	NR	NR	NR	0.999	Probably damaging	NR	NR	0.999	Disease causing
c.370-2A>G	Splice site	Classic	Classic	Pathogenic	NR	Affects function	NA	NA	NA	NA	NA	NA
c.802-3_802-2del	Splice site	Classic	Classic	Pathogenic	NR	Affects function	NA	NA	NA	NA	NA	NA
c.548-1G>A	Splice site	Classic	Classic	Pathogenic	NR	Affects function	NA	NA	NA	NA	NA	NA
c.999+2T>C	Splice site	Classic	Classic	Pathogenic	NR	Affects function	NA	NA	NA	NA	NA	NA
c.777del	Frameshift	Classic	Classic	NR	NR	Affects function	NA	NA	NA	NA	NA	NA
c.1042dup	Frameshift	Classic	Classic	NR	NR	Affects function	NA	NA	NA	NA	NA	NA
c.57_82del	Frameshift	Classic	Not available	NR	NR	NR	NA	NA	NA	NA	NA	NA
c.365_371del	Frameshift	Classic	Not available	NR	NR	NR	NA	NA	NA	NA	NA	NA
c.1188_1189insT	Frameshift	Classic	Not available	NR	NR	NR	NA	NA	NA	NA	NA	NA
c.568del	Frameshift	Classic	Classic	NR	NR	Affects function	NA	NA	NA	NA	NA	NA
p.Ser65_Tyr123del	Large deletion	Classic	Not available	NR	NR	NR	NA	NA	NA	NA	NA	NA
c.1212_1214del	Small deletion	Classic	Classic	NR	NR	Affects function	NA	NA	NA	NA	NA	NA
p.Glu358del	Small deletion	Classic	Classic	Pathogenic	NR	NR	NA	NA	NA	NA	NA	NA
c.639+4A>T	Intronic	Classic	Classic	Uncertain	NR	Affects function	NA	NA	NA	NA	NA	NA
c.1000-10G>A	Intronic	Classic	Not available	NR	NR	NR	NA	NA	NA	NA	NA	NA
c.639+919G>A	Intronic	Later-onset	Later-onset	Conflicting interpretations: Pathogenic (n=3); Uncertain (n=1)	NR	NR	NA	NA	NA	NA	NA	NA

*Genetic variant of unknown significance; experts' opinion in favour of a likely benign GLA variant

dbFGP, International Fabry Disease Genotype-Phenotype Database; LOVD, Leiden Open Variation Database; NA, not applicable; NR, no result available; PolyPhen-2, Polymorphism Phenotyping v2; SIFT, Scale-Invariant Feature Transform