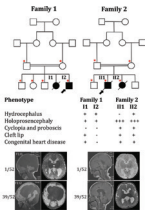


April 2022 Volume 59 Issue 4

JMG

Journal of Medical Genetics



jmg.bmj.com



BMJ

Contents

Cancer genetics

313 *CDH1* germline mutations in healthy individuals from families with the hereditary diffuse gastric cancer syndrome
G Corso, F Magnoni, G Massari, C M Trovato, A M De Scalzi, E Vicini, B Bonami, P Veronesi, V Galimberti, V Bagnardi

318 Diagnostic criteria for constitutional mismatch repair deficiency (CMMRD): recommendations from the international consensus working group
M Aronson, C Colas, A Shuen, H Hampel, W D Foulkes, H Baris Feldman, Y Goldberg, M Muleris, K Wolfe Schneider, R B McGee, K Jasperson, A Rangaswami, L Brugieres, U Tabori

328 Advances in genetic technologies result in improved diagnosis of mismatch repair deficiency in colorectal and endometrial cancers
D G Evans, F Laloo, N AJ Ryan, N Bowers, K Green, E R Woodward, T Clancy, J Bolton, R J McVey, A J Wallace, K Newton, J Hill, R McMahon, E J Crosbie

335 Genetic variants associated with expression of *TCF19* contribute to the risk of head and neck cancer in Chinese population
P Ji, J Chang, X Wei, X Song, H Yuan, L Gong, Y Li, D Ding, E Zhang, C Yan, M Zhu, X Miao, C Wu, G Jin, Z Hu, H Shen, H Ma

346 Testicular Sertoli cell tumour and potentially testicular Leydig cell tumour are features of *DICER1* syndrome
L Golmard, L M Vasta, V Duflos, C Corsini, C Dubois d'Enghien, M L McMaster, L A Harney, A G Carr, A Ling, F Djoud, A Gauthier, M Miettinen, N G Cost, M Gauthier-Villars, D Orbach, S Iran, S Haouy, K A Schultz, D Stoppa-Lyonnet, I Coupiet, D R Stewart, N Sirvent

Neurogenetics

351 Whole genome and exome sequencing identify *NDUFV2* mutations as a new cause of progressive cavitating leukoencephalopathy
Z Liu, L Zhang, C Ren, M Xu, S Li, R Ban, Y Wu, L Chen, S Sun, M Elstner, M Shimura, M Ogawa-Tominaga, K Murayama, T Shi, H Prokisch, F Fang

358 Mutations in phospholipase C eta-1 (*PLCH1*) are associated with holoprosencephaly
I Drissi, E Fletcher, R Shaheen, M Nahorski, A M Alhashem, S Liso, A Fernández-Jaén, K Schon, K Thili-Gratiss, S F Smithson, S Lindsay, H J Sharpe, F S Alkuraya, G Woods

366 Using data from the 100,000 Genomes Project to resolve conflicting interpretations of a recurrent *TUBB2A* mutation
V Ragoussis, A T Pagnamenta, R L Haines, E Giacomuzzi, M A McClatchey, J R Sampson, M Suri, A Gardham, J-M Cobben, D Osio, A E Fry, Genomics England Research Consortium, J C Taylor

Screening

370 Universal germline testing among patients with colorectal cancer: clinical actionability and optimised panel
W Jiang, L Li, C-F Ke, W Wang, B-Y Xiao, L-H Kong, J-H Tang, Y Li, X-D Wu, Y Hu, W-H Guo, S-Z Wang, D-S Wan, R-H Xu, Z-Z Pan, P-R Ding

Biochemical genetics

377 Disentangling molecular and clinical stratification patterns in beta-galactosidase deficiency
A Tebani, B Sudrié-Arnaud, I Dabaj, S Torre, L Domitille, S Snanoudj, B Heron, T Levade, C Caillaud, S Vergnaud, P Saugier-Verber, S Coutant, H Dranguet, R Froissant, M Al Khouri, Y Alembik, J Baruteau, J-B Amoux, A Brassier, A-C Brehin, T Busa, A Cano, B Chabrol, C Coubes, I Desguerre, M Doco-Fenzy, B Drenou, N H Elcioglu, S Elsayed, A Fouilhoux, C Poirsier, A Goldenberg, P Jouvencel, A Kuster, F Labarthe, L Lazaro, S Pichard, S Rivera, S Roche, S Roggerone, A Roubertie, S Sigaudy, M Spodenkiewicz, M Tardieu, C Vanhulle, S Marret, S Bekri

Diagnostics

385 Improving the clinical interpretation of missense variants in X linked genes using structural analysis
S R Sallah, J M Ellingford, P I Sergouniotis, S C Ramsden, N Lench, S C Lovell, G C Black

393 Personalised virtual gene panels reduce interpretation workload and maintain diagnostic rates of proband-only clinical exome sequencing for rare disorders
L P Molina-Ramírez, C Kyle, J M Ellingford, R Wright, A Taylor, S S Bhaskar, C Campbell, H Jackson, A Fairclough, A Rousseau, G J Burghel, L Dutton, S Banka, T A Briggs, J Clayton-Smith, S Douzgon, E A Jones, H M Kingston, B Kerr, J Ealing, S Somarathi, K E Chandler, H M Stuart, E M M Burkeit-Wright, W G Newman, I A Bruce, G C Black, D Gokhale

Genotype-phenotype correlations

399 Refining the mutational spectrum and gene-phenotype correlates in pontocerebellar hypoplasia: results of a multicentric study
S Nuovo, A Micalizzi, R Romaniello, F Arrigoni, M Ginevrino, A Casella, V Serpieri, S D'Arrigo, M Briguglio, G G Salerno, S Rossato, S Santoni, V Leuzzi, R Battini, B Ben-Zeev, C Graziano, M Mirabelli Badenier, V Brankovic, N Nardocci, R Spiegel, D Petković Ramadža, G Vento, I Marti, A Simonati, S Dipresa, E Freri, T Mazza, M T Bassi, L Bosco, L Travaglini, G Zanni, E S Bertini, N Vanacore, R Borgatti, E M Valente

Abstracts

410 CCMG-CCGM Oral Presentations

Cover credit: Family pedigrees, phenotypic data and brain scans of individuals with *PLCH1* associated holoprosencephaly. See Drissi *et al*, page 359.



Adopted as the official Journal of the Canadian College of Medical Geneticists



This article has been chosen by the Editor to be of special interest or importance and is freely available online.



This article has been made freely available online under the BMJ Journals open access scheme. See <http://authors.bmj.com/open-access/>



This journal is a member of and subscribes to the principles of the Committee on Publication Ethics <http://publicationethics.org/>



When you have finished with this please recycle it

MCQs The online version of this article contains multiple choice questions hosted on BMJ Learning.