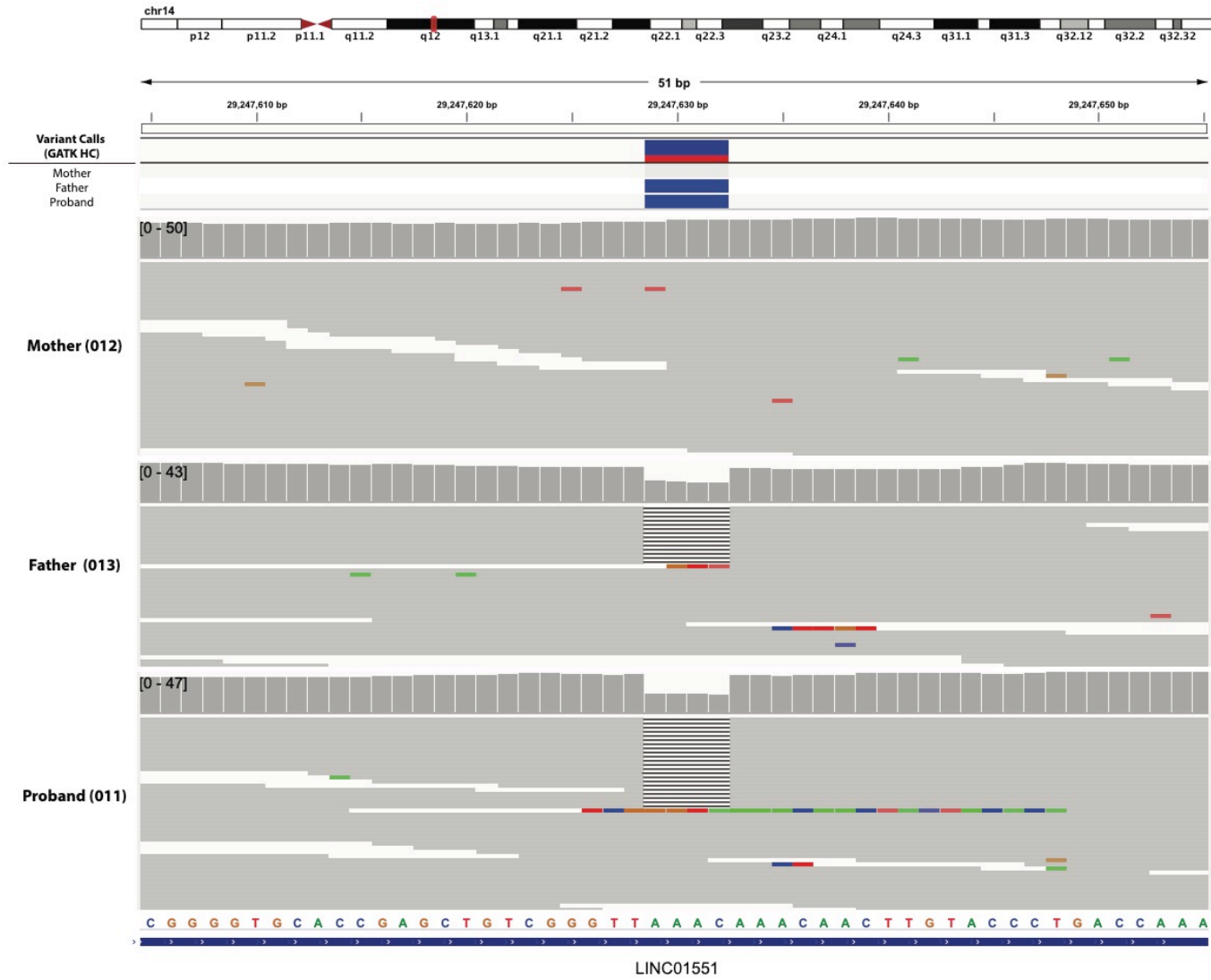
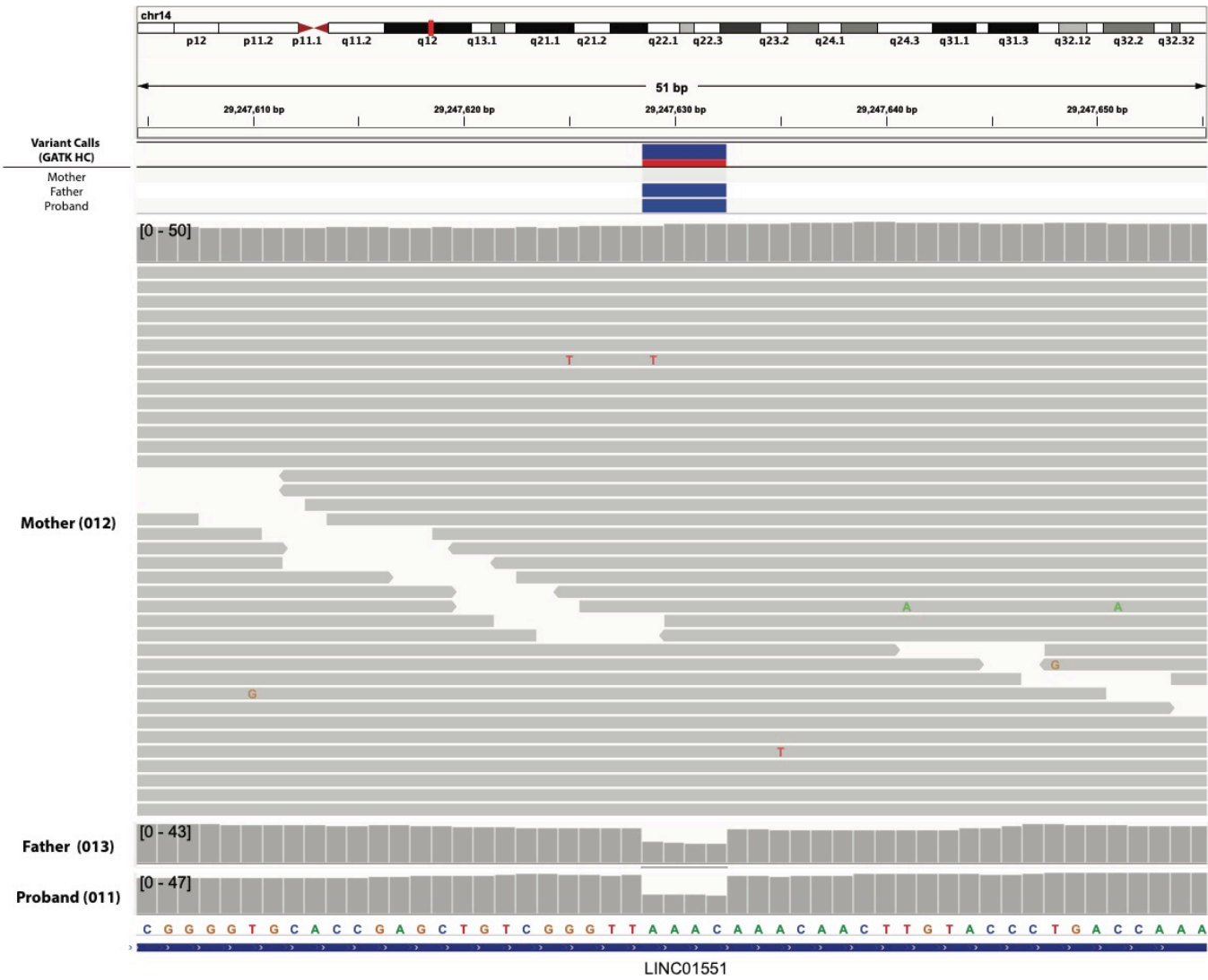
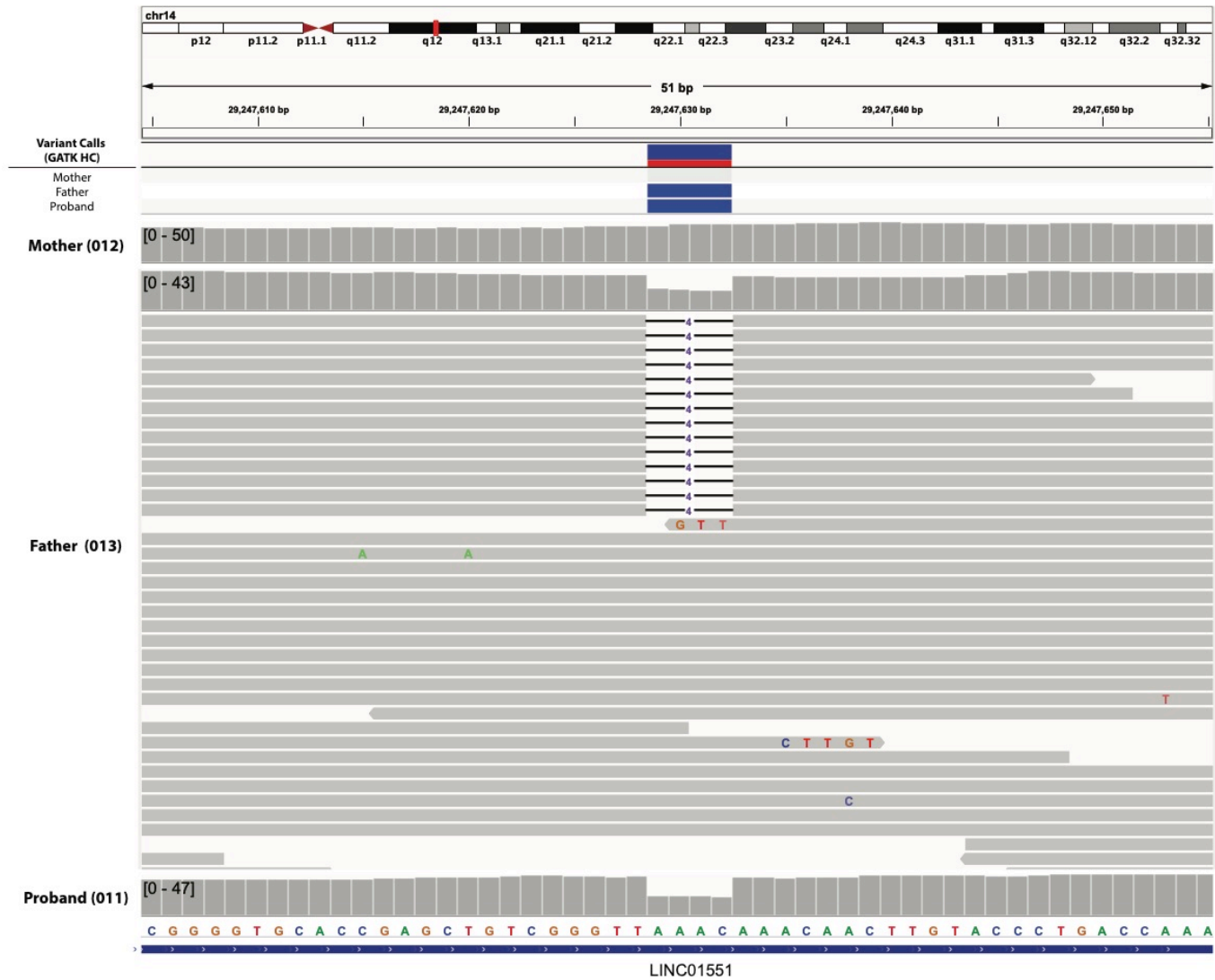
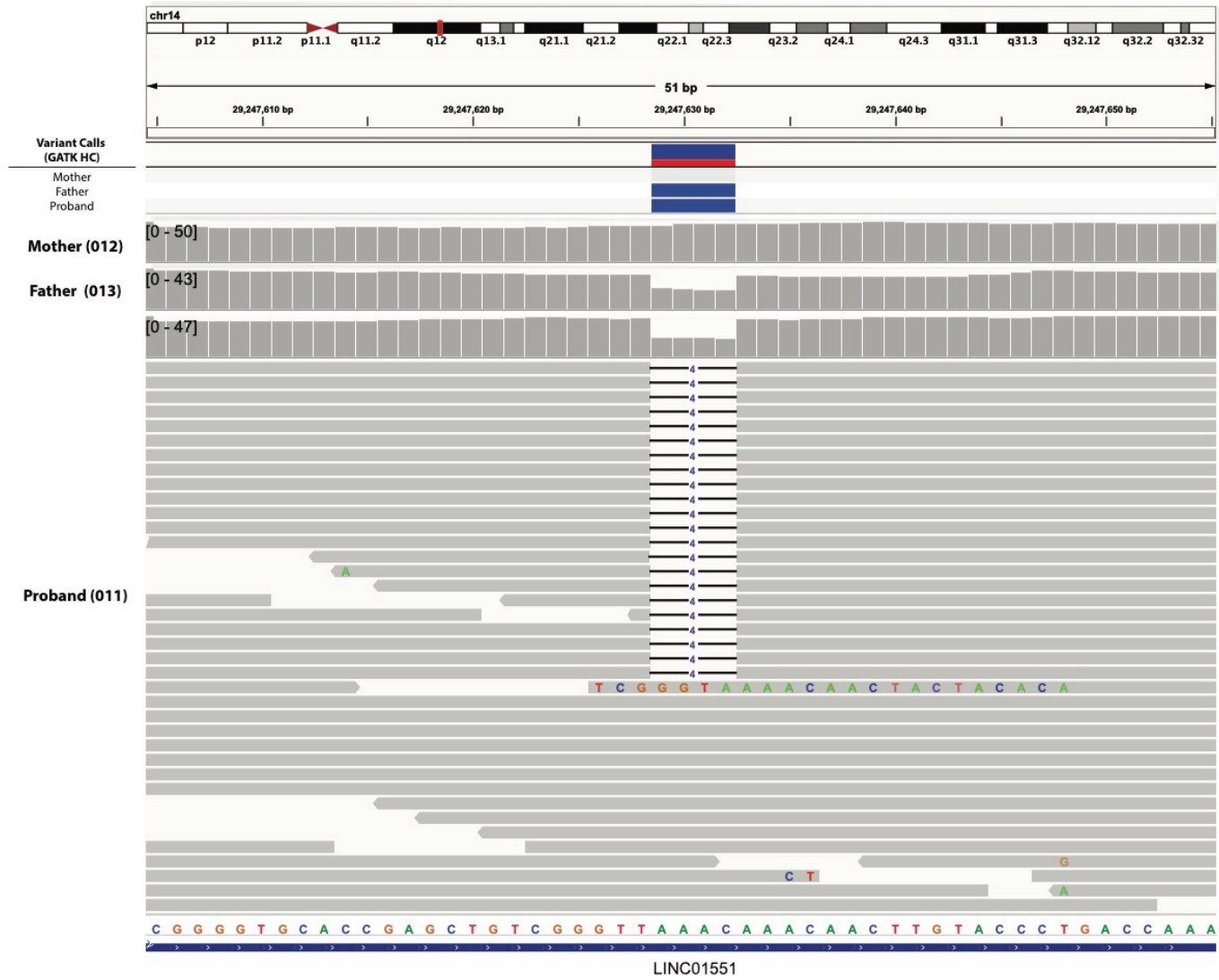


Supplementary Figure 1. LOD score plot for the observed linked region on chromosome 14. The horizontal axis represents the location in terms of centiMorgans. The displayed region spans the physical positions of chr14:28,467,136 – 30,045,978 (hg19/GRCh37). The vertical axis represents LOD score. The dash line indicates the threshold of LOD <-2.









Supplementary Figure 2.

a) Integrative Genomic Viewer (IGV) screenshot of the WGS for the parent-child trio. (Affected: 011 and 013; Unaffected: 012). The horizontal axis represents the sequence of the reference genome. A small portion of the aligned reads for each of the three individuals is shown as indicated by the labels along the vertical axis.

- b) Extended view of IGV screenshot for 012 (Mother).
- c) Extended view of IGV screenshot for 013 (Father).
- d) Extended view of IGV screenshot for 011 (Proband).

(Detailed information about the IGV display can be obtained on <https://software.broadinstitute.org/software/igv/>)