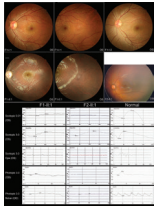


May 2019 Volume 56 Issue 5

JMG
Journal of Medical Genetics



jmg.bmj.com



BMJ

Cover credit: The effect of USP45 mutation on retinal morphology and electroretinogram from Zhen Yi *et al* (see page 328).



Adopted as the official Journal of the Canadian College of Medical Geneticists

Contents

Gametes

- 271** Genetic diagnosis of subfertility: the impact of meiosis and maternal effects
 OPEN ACCESS *A Gheldof, D J G Mackay, Y Cheong, W Verpoest*

Neurogenetics

- 283** Integrative network and brain expression analysis reveals mechanistic modules in ataxia
 OPEN ACCESS *I Eidhof, B P van de Warrenburg, A Schenck*

Therapeutics

- 293** Longitudinal evaluation of SMN levels as biomarker for spinal muscular atrophy: results of a phase IIb double-blind study of salbutamol
F D Tiziano, R Lomastro, E Abiusi, M B Pasanisi, L Di Pietro, S Fiori, G Baranello, C Angelini, G Sorarù, A Gaiani, T Mongini, L Vercelli, E Mercuri, G Vasco, M Pane, G Vita, G Vita, S Messina, R Petillo, L Passamano, L Politano, A Campanella, R Mantegazza, L Morandi

Cancer genetics

- 301** Prevalence of germline pathogenic *BRCA1/2* variants in sequential epithelial ovarian cancer cases
R D Morgan, G J Burghel, N Flaum, M Bulman, A R Clamp, J Hasan, C L Mitchell, H Schlecht, E R Woodward, F I Lallo, E J Crosbie, R J Edmondson, A J Wallace, G C Jayson, D G R Evans

Genotype-phenotype correlations

- 308** Genotype-phenotype correlations in ataxia telangiectasia patients with *ATM* c.3576G>A and c.8147T>C mutations
 EDITOR'S CHOICE
N J H van Os, L Chessa, C M R Weemaes, M van Deuren, A Fiévet, J van Gaalen, N Mahlaoui, N Roeleveld, C Schrader, D Schindler, A M R Taylor, B P C Van de Warrenburg, T Dörk, M A A P Willemsen

Ethics and Policy

- 317** Should pretest genetic counselling be required for patients pursuing genomic sequencing? Results from a survey of participants in a large genomic implementation study
J E Pacyna, C Radecki Breitkopf, S M Jenkins, E J Sutton, C Horrow, I J Kullo, R R Sharp

Vision science

- 325** Biallelic mutations in *USP45*, encoding a deubiquitinating enzyme, are associated with Leber congenital amaurosis
Z Yi, J Ouyang, W Sun, X Xiao, S Li, X Jia, P Wang, Q Zhang

Developmental defects

- 332** *MAB21L1* loss of function causes a syndromic neurodevelopmental disorder with distinctive cerebellar, ocular, craniofacial and genital features (COFG syndrome)
 OPEN ACCESS
A Rad, U Altunoglu, R Miller, R Maroofian, K N James, A O Çağlayan, M Najafi, V Stanley, R-M Boustany, G Yeşil, A Sahebzamani, G Ercan-Sencicek, K Saeidi, K Wu, P Bauer, Z Bakey, J G Gleeson, N Hauser, M Gunel, H Kayserili, M Schmidts

Novel disease loci

- 340** Biallelic mutations in *EXOC3L2* cause a novel syndrome that affects the brain, kidney and blood
A Shalata, S Lauhasurayotin, Z Leibovitz, H Li, D Hebert, S Dhanraj, Y Hadid, M Mahroum, J Bajar, S Egenburg, A Arad, M Shohat, S Haddad, H Bakry, H Moshiri, S W Scherer, S Tzur, Y Dror

This article has been chosen by the Editor to be of special interest or importance and is freely available online.

EDITOR'S CHOICE

This article has been made freely available online under the BMJ Journals open access scheme. See <http://authors.bmj.com/open-access/>

OPEN ACCESS

This journal is a member of and subscribes to the principles of the Committee on Publication Ethics
<http://publicationethics.org/>

Member since 2008
JM00012

equator
network

recycle
When you have finished
with this please recycle it

The online version of this article contains multiple choice questions hosted on BMJ Learning.