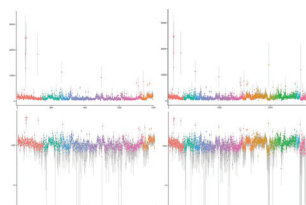


Journal of Medical Genetics

February 2018 Volume 55 Issue 2

JMG
Journal of Medical Genetics



jmg.bmj.com



BMJ

Cover credit: Coverage profile of different exon panels for diagnostics in inherited retinal disease from Ellingford JM *et al.*, supplementary figure S2.



Adopted as the official Journal of the Canadian College of Medical Geneticists

Contents

Neurogenetics

- 73** Genetics of Parkinson's disease and related disorders
 P-L Zhang, Y Chen, C-H Zhang, Y-X Wang, P Fernandez-Funez

Somatic mosaicism

- 81** Two patients with MIRAGE syndrome lacking haematological features: role of somatic second-site reversion SAMD9 mutations
H Shima, K Koehler, Y Nomura, K Sugimoto, A Satoh, T Ogata, M Fukami, R Jühlen, M Schuelke, K Mohriike, A Huebner, S Narumi


Clinical guidelines

- 86** Choosing Wisely Canada: The Canadian College of Medical Geneticists' (CCMG) list of five items physicians and patients should question
E Goh, A Guerin, J Lazier, S Goobie, T N Nelson, R Agatep, V M Siu, K Y Niederhoffer, J Richer

Cancer genetics

- 89** CNVs affecting cancer predisposing genes (CPGs) detected as incidental findings in routine germline diagnostic chromosomal microarray (CMA) testing
J Innes, L Reali, J Clayton-Smith, G Hall, D H K Lim, G J Burghel, K French, U Khan, D Walker, F Laloo, D G R Evans, D McMullan, E R Maher, E R Woodward
- 97** Inherited mutations in *BRCA1* and *BRCA2* in an unselected multiethnic cohort of Asian patients with breast cancer and healthy controls from Malaysia
W X Wen, J Allen, K N Lai, S Mariapun, S N Hasan, P S Ng, D Shin-C Lee, S Y Lee, S-Y Yoon, J Lim, S Y Lau, B Decker, K Pooley, L Dorling, C Luccarini, C Baynes, D M Conroy, P Harrington, J Simard, C H Yip, N A Mohd Taib, W K Ho, A C Antoniou, A M Dunning, D F Easton, S H Teo


Phenotypes

- 104** PURA syndrome: clinical delineation and genotype-phenotype study in 32 individuals with review of published literature
 M R F Reijnders, R Janowski, M Alvi, J E Self, T J van Essen, M Vreeburg, R P W Rouhl

February 2018 Volume 55 Issue 2

S J C Stevens, A P A Stegmann, J Schieving, R Pfundt, K van Dijk, E Smeets, C T R M Stumpel, L A Bok, J M Cobben, M Engelen, S Mansour, M Whiteford, K E Chandler, S Douzgou, N S Cooper, E-C Tan, R Foo, A H M Lai, J Rankin, A Green, T Lönnqvist, P Isohanni, S Williams, I Ruhoy, K S Carvalho, J J Dowling, D L Lev, K Sterbova, P Lassuthova, J Neupauerová, J L Waugh, S Keros, J Clayton-Smith, S F Smithson, H G Brunner, C van Hoeckel, M Anderson, V E Clowes, V M Siu, T DDD study, P Selber, R J Leventer, C Nellaker, D Niessing, D Hunt, D Baralle

Copy-number variation

- 114** Assessment of the incorporation of CNV surveillance into gene panel next-generation sequencing testing for inherited retinal diseases
 J M Ellingford, B Horn, C Campbell, G Arno, S Barton, C Tate, S Bhaskar, P I Sergouniotis, R L Taylor, K J Carss, L F L Raymond, M Michaelides, S C Ramsden, A R Webster, G C M Black

New disease loci


- 122** Defect in phosphoinositide signalling through a homozygous variant in *PLCB3* causes a new form of spondylometaphyseal dysplasia with corneal dystrophy
S Ben-Salem, S M Robbins, N L M Sobreira, A Lyon, A M Al-Shamsi, B K Islam, N A Akawi, A John, P Thachillath, S Al Hamed, D Valle, B R Ali, L Al-Gazali

Diagnostics

- 131** Segregation of mitochondrial DNA mutations in the human placenta: implication for prenatal diagnosis of mtDNA disorders
P Vachin, E Adda-Herzog, G Chalouhi, C Elie, M Rio, S Rondeau, N Gigarel, F J Hanin, S Monnot, R Borghese, J Bengoa, Y Ville, A Rotig, A Munnich, J-P Bonnefont, J Steffann

Genotype-phenotype correlations

- 137** Hypothesis: lobe A (COG1–4)-CDG causes a more severe phenotype than lobe B (COG5–8)-CDG
H A Hajjes, J Jaeken, F Foulquier, P M van Hasselt

 This article has been chosen by the Editor to be of special interest or importance and is freely available online.

EDITOR'S CHOICE

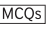
 This article has been made freely available online under the BMJ Journals Open Access scheme. See <http://authors.bmj.com/open-access/>

OPEN ACCESS

 This journal is a member of and subscribes to the principles of the Committee on Publication Ethics <http://publicationethics.org/>
Member since 2008
JM00012

 equator network

 recycle
When you have finished with this please recycle it

 The online version of this article contains multiple choice questions hosted on BMJ Learning.

jmg.bmj.com

BMJ