

Genotype–phenotype correlation and functional studies in patients with cystic fibrosis bearing CFTR complex alleles

Vito Terlizzi,¹ Giuseppe Castaldo,^{2,3} Donatello Salvatore,⁴ Marco Lucarelli,⁵ Valeria Raia,⁶ Adriano Angioni,⁷ Vincenzo Carnovale,⁸ Natalia Cirilli,⁹ Rosaria Casciaro,¹⁰ Carla Colombo,¹¹ Antonella Miriam Di Lullo,^{2,3,12} Ausilia Elce,¹³ Paola Iacotucci,⁸ Marika Comegna,^{2,3} Manuela Scorza,^{2,14} Vincenzina Lucidi,¹⁵ Anna Perfetti,² Roberta Cimino,¹⁶ Serena Quattrucci,¹⁷ Manuela Seia,¹⁸ Valentina Maria Sofia,⁷ Federica Zarrilli,¹⁹ Felice Amato^{2,3}

► Additional material is published online only. To view please visit the journal online (<http://dx.doi.org/10.1136/jmedgenet-2016-103985>).

For numbered affiliations see end of article.

Correspondence to

Dr Vito Terlizzi, Centro Regionale Toscano per la Fibrosi Cistica, Dipartimento di Pediatria, Azienda Ospedaliero-Universitaria Meyer, Viale Gaetano Pieraccini 24, Florence 50139, Italy; terlizzivito@libero.it

Received 26 April 2016
Revised 12 September 2016
Accepted 22 September 2016
Published Online First
13 October 2016

ABSTRACT

Background The effect of complex alleles in cystic fibrosis (CF) is poorly defined for the lack of functional studies.

Objectives To describe the genotype–phenotype correlation and the results of either *in vitro* and *ex vivo* studies performed on nasal epithelial cells (NEC) in a cohort of patients with CF carrying *cystic fibrosis transmembrane conductance regulator* (CFTR) complex alleles.

Methods We studied 70 homozygous, compound heterozygous or heterozygous for CFTR mutations: p.[Arg74Trp;Val201Met;Asp1270Asn], n=8; p.[Ile148Thr;Ile1023_Val1024del], n=5; p.[Arg117Leu;Leu997Phe], n=6; c.[1210-34TG[12];1210-12T[5];2930C>T], n=3; p.[Arg74Trp;Asp1270Asn], n=4; p.Asp1270Asn, n=2; p.Ile148Thr, n=6; p.Leu997Phe, n=36. In 39 patients, we analysed the CFTR gating activity on NEC in comparison with patients with CF (n=8) and carriers (n=4). Finally, we analysed *in vitro* the p.[Arg74Trp;Val201Met;Asp1270Asn] complex allele.

Results The p.[Ile148Thr;Ile1023_Val1024del] caused severe CF in five compound heterozygous with a class I–II mutation. Their CFTR activity on NEC was comparable with patients with two class I–II mutations (mean 7.3% vs 6.9%). The p.[Arg74Trp;Asp1270Asn] and the p.Asp1270Asn have scarce functional effects, while p.[Arg74Trp;Val201Met;Asp1270Asn] caused mild CF in four of five subjects carrying a class I–II mutation *in trans*, or CFTR-related disorders (CFTR-RD) in three having *in trans* a class IV–V mutation. The p.[Arg74Trp;Val201Met;Asp1270Asn] causes significantly (p<0.001) higher CFTR activity compared with compound heterozygous for class I–II mutations. Furthermore, five of six compounds heterozygous with the p.[Arg117Leu;Leu997Phe] had mild CF, whereas the p.Leu997Phe, *in trans* with a class I–II CFTR mutation, caused CFTR-RD or a healthy status (CFTR activity: 21.3–36.9%). Finally, compounds heterozygous for the c.[1210-34TG[12];1210-12T[5];2930C>T] and a class I–II mutation had mild CF or CFTR-RD (gating activity: 18.5–19.0%).

Conclusions The effect of complex alleles partially depends on the mutation *in trans*. Although larger studies are necessary, the CFTR activity on NEC is a rapid contributory tool to classify patients with CFTR dysfunction.

INTRODUCTION

Cystic fibrosis (CF) is a multisystem disease caused by mutations causing deficient or dysfunctional *CF transmembrane conductance regulator* (CFTR) protein. Typically, CF is characterised by elevated sweat chloride levels (SCL), obstructive lung disease, chronic bacterial infections of lower airways and sinuses, bronchiectasis and male infertility due to obstructive azoospermia. Most patients with CF have pancreatic insufficiency (PI) although 10–15% have normal exocrine pancreatic function and frequently show a milder clinical picture. Often, such cases have at least one CFTR mutation with a mild functional effect.¹

Moreover, an increasing number of patients is diagnosed as CFTR-related disorders (CFTR-RD)² generally characterised by a later onset of symptoms involving a single organ (ie, pancreatitis, disseminated bronchiectasis, obstructive azoospermia secondary to congenital bilateral absence of vas deferens (CBAVD)),³ usually associated to borderline SCL and mutations causing a different degree of CFTR protein dysfunction either in coding^{4–6} and in non-coding CFTR gene regions.^{7–8} Finally, the growing proportion of newborn screening (NBS) programmes revealed a large number of infants having a Cystic Fibrosis Screen Positive, Inconclusive Diagnosis (CFSPID) including those infants with discordance between immunoreactive trypsinogen at the NBS, SCL, CFTR genotype and clinical phenotype.^{9–10}

More than 2000 CFTR mutations have been recorded so far worldwide (<http://www.genet.sickkids.on.ca/app>) although only a small number of them are clearly defined as CF-causing on the basis of functional studies as reported in the CFTR2 site (<http://www.cftr2.org/index.php>). Indeed, the use of CFTR gene sequencing¹¹ leads frequently to the detection of mutations for which it lacks a clear and univocal genotype–phenotype correlation^{12–14} also because the genetic background and the environment in which each patient lives contribute to the individual CF phenotype.¹² Furthermore, the existence of complex alleles complicates even more genetic counselling.^{15–16} They result from the



CrossMark

To cite: Terlizzi V, Castaldo G, Salvatore D, et al. *J Med Genet* 2017;**54**:224–235.

combination of two or more *CFTR* mutations *in cis* (ie, on the same allele) that usually act as a pathogenic mutation whereas each single mutation has only a minor or none effect. Few subjects bearing the p.[Arg74Trp;Val201Met;Asp1270Asn],^{14 16 17} the p.[Ile148Thr;Ile1023_Val1024del],^{18 19} the p.[Arg117Leu;Leu997Phe]^{20–22} and the c.[1210-34TG[12];1210-12T[5];2930C>T]²³ complex alleles were described so far with variable characteristics. However, a functional characterisation of the effect of these mutations was performed in a limited number of cases.^{17 23}

We studied a cohort of patients with CF carrying *CFTR* complex alleles and described the genotype–phenotype correlation and the results of either *in vitro* and *ex vivo* studies performed on nasal epithelial cells (NEC).

METHODS

Subjects population

The study was approved by the ethical committee of the University of Naples Federico II. We performed a retrospective analysis of all patients in follow-up at nine Italian CF centres and included all subjects who were homozygous or compound heterozygous for the following complex alleles: (1) p.[Arg74Trp;Val201Met;Asp1270Asn], n=8; (2) p.[Arg74Trp;Asp1270Asn], n=2; (3) p.[Ile148Thr;Ile1023_Val1024del], n=5; (4) p.[Arg117Leu;Leu997Phe], n=6; (5) c.[1210-34TG[12];1210-12T[5];2930C>T], n=3. Furthermore, we studied subjects homozygous or compound heterozygous for the following mutations: (1) (2) p.Asp1270Asn, n=2; (3) p.Ile148Thr, n=4; and (4) p.Leu997Phe, n=34. Finally, we studied obligate carriers heterozygous for the p.Ile148Thr (n=2); p.Leu997Phe (n=2) mutations and for the p.[Arg74Trp;Asp1270Asn] complex allele (n=2). We measured the *CFTR* gating activity on NEC from 39 subjects and compared the data with those obtained from: (1) patients with CF with two class I–II mutations, n=8, and (2) carriers of class I–II mutations, n=4.

Clinical data

The diagnosis of CF and *CFTR*-RD was performed according to the published criteria.^{2 24} CFSPID subjects were defined as above reported.⁹

For each subject, we collected a database including demographic, clinical and genetic data at diagnosis and during the follow-up. SCL were obtained by the Gibson and Cooke method.^{25 26} It was tested at diagnosis and repeated at the current age in patients with *CFTR*-RD or CFSPID (then, we considered the last available value) and twice at diagnosis in patients with CF. In each centre, sweat test was always performed in the same laboratory, thus ruling out the lack of harmonisation between different labs²⁷ and all of them participate in the National Quality Control Programme.²⁸ SCL were considered normal for values <40 mmol/L, borderline between 40 and 59 mmol/L and pathological ≥60 mmol/L.²⁶ The last best forced expiratory volume in 1 second (FEV₁), expressed as percentage of predicted value for age, according to standardised reference equations for spirometry²⁹ and performed when patient was free from pulmonary exacerbations, was recorded for patients aged over 6 years. Given the interindividual variability of FEV₁ and the evolution of lung damage with age, the patients were classified as severe or mild according to Schluchter *et al*³⁰ criteria that take into account both FEV₁ value and age. For patients who had died, we considered the last available value. *Pseudomonas aeruginosa* chronic infection was defined according to the modified Leeds criteria.³¹ Pancreatic sufficiency (PS) was defined on the basis of at least two values of faecal

pancreatic elastase higher than 200 µg/g measured outside acute gastrointestinal diseases.³² Faecal pancreatic elastase was evaluated annually in patients with PS and at least 3 months before enrolment. Pancreatitis was defined according to the report from the international study group of paediatric pancreatitis.³³ CF-related diabetes (CFRD) was diagnosed according to the American Diabetes Association criteria.³⁴ CF-associated liver disease was defined by clinical and/or biochemical abnormalities when imaging demonstrated hepatic parenchymal abnormalities and/or portal hypertension in the absence of other demonstrated causes of liver disease.³⁵ Complications such as allergic bronchopulmonary aspergillosis,³⁶ meconium ileus (MI) or distal intestinal obstruction syndrome (DIOS), nasal polyposis, haemoptysis, and pneumothorax were also registered.

Molecular analysis of *CFTR*

We screened for a commercial panel of mutations with a detection rate of about 80%³⁷; then, we looked for the most common rearrangements³⁸ and carried out gene sequencing (detection rate about 97% for classic CF)³⁹ in cases where one or both mutations resulted undetected after first-level analysis, according to European recommendations.¹¹ Furthermore, we analysed intragenic *CFTR* short tandem repeats (STR) to exclude the recurrent origin of several *CFTR* mutations.⁴⁰ All laboratories involved in this study take part in the national project on standardisation and quality assurance for molecular genetic testing.⁴¹ For *CFTR* mutations, we used the nomenclature guidelines suggested by the Human Genome Variation Society. However, for each mutation studied, online supplementary table 1 reports also the legacy name.

Nasal brushing and culture of NEC

NEC were collected by nasal brushing in 39 subjects. Details are provided as online supplementary materials.

Quantitative analysis of *CFTR* channel activity on NEC

Reported as online supplementary material.

HEK293 cell culture

Reported as online supplementary material.

Plasmid constructs and lentiviral vector production

Reported as online supplementary materials.

Western blot analysis

Reported as online supplementary material.

CFTR activity assay on HEK293 cells

Reported as online supplementary material.

Statistics

The *t*-test was used to compare the levels of *CFTR* gating activity on NEC between different groups.

RESULTS

p.[Arg74Trp;Val201Met;Asp1270Asn] and p.[Arg74Trp;Asp1270Asn] complex alleles and p.Asp1270Asn mutation

Eight subjects were compound heterozygous for the p.[Arg74Trp;Val201Met;Asp1270Asn] complex allele (table 1).

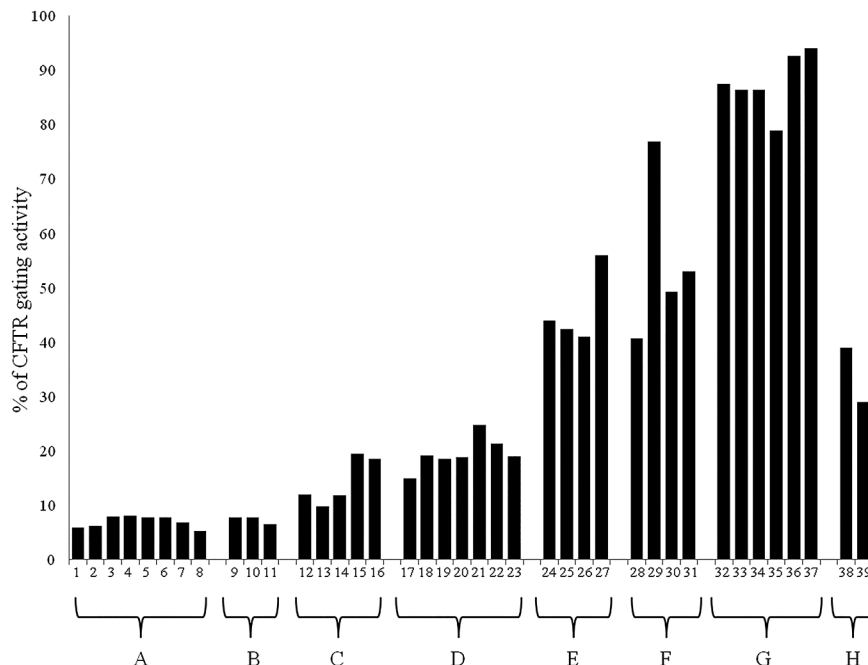
Six of eight had a class I–II mutation *in trans* (ie, p.Phe508del: three cases; p.Asn1303Lys: two cases and p.Ser1206*: one case) and two of eight had *in trans* a *CFTR* mutation with higher residual function (ie, p.Asp1152His and p.Asp579Gly). Among patients compound heterozygous with a class I–II mutation,

Table 1 Demographic and clinical data of subjects bearing the [p.Arg74Trp;Val201Met;p.Asp1270Asn] or the [p.Arg74Trp;p.Asp1270Asn] complex alleles or the p.Asp1270Asn mutation

Gender	Current age (years)	Diagnosis	Age at diagnosis/enrolment (years)	Cause of diagnosis/enrolment	Allele 1	Allele 2	SCL* (mmol/L)	Current FEV ₁ (%)	Pancreatic status	CFTR gating (%)	Other
M	36	CF	19	Hypochloremic alkalosis	p.[Arg74Trp;Val201Met; Asp1270Asn]	p.Phe508del	89	104	PS	n.a.	CBAVD
F	58	CF	53	Familiarity	p.[Arg74Trp;Val201Met; Asp1270Asn]	p.Phe508del	62	105	PS	12.0	
F	21	CF	9	Familiarity	p.[Arg74Trp;Val201Met; Asp1270Asn]	p.Asn1303Lys	109	119	PS	9.8	IGT
F	23	CF	10	Respiratory	p.[Arg74Trp;Val201Met; Asp1270Asn]	p.Asn1303Lys	65	95	PS	11.8	IGT; bronchiectasis
M	12	CFTR-RD	6	Respiratory	p.[Arg74Trp;Val201Met; Asp1270Asn]	p.Phe508del	37	87	PS	15.0	
M	13	CFTR-RD	1	Hypochloremic alkalosis	p.[Arg74Trp;Val201Met; Asp1270Asn]	p.Ser1206*	46	91	PS	n.a.	
M	37	CFTR-RD	32	CBAVD	p.[Arg74Trp;Val201Met; Asp1270Asn]	p.Asp579Gly	118	99	PS	19.1	
M	48	CFTR-RD	42	CBAVD	p.[Arg74Trp;Val201Met; Asp1270Asn]	p.Asp1152His	31	n.a.	PS	18.5	
M	40	CFTR-RD	34	CBAVD	p.[Arg74Trp;Val201Met; Asp1270Asn]	c.[1210-34TG [12];1210-12T[5]]	32	n.a.	PS	18.9	
F	5	Healthy	1	NBS	p.[Arg74Trp;Val201Met; Asp1270Asn]	p.Phe508del	11	n.a.	PS	n.a.	
M	40	Healthy	35	Familiarity	p.[Arg74Trp;Val201Met; Asp1270Asn]	p.Asn1303Lys	9	n.a.	PS	n.a.	
M	40	Healthy	35	Familiarity	p.[Arg74Trp;Val201Met; Asp1270Asn]	p.Phe508del	12	n.a.	PS	44.0	
M	50	Healthy	40	Familiarity	p.[Arg74Trp;Val201Met; Asp1270Asn]	N	n.a.	n.a.	n.a.	92.6	
F	47	Healthy	47	Familiarity	p.[Arg74Trp;Val201Met; Asp1270Asn]	N	n.a.	n.a.	n.a.	94.0	

* For patients with CF, we reported SCL at diagnosis while for CFTR-RD and for healthy subjects we reported current SCL; values in italics represent SCL discordant with diagnosis. CBAVD, congenital bilateral absence of vas deferens; CF, cystic fibrosis; CFTR-RD, cystic fibrosis transmembrane conductance regulator-related disorders; FEV₁, forced expiratory volume in 1 second; IGT, impaired glucose tolerance; n.a., not assessed; N, wild-type allele; NBS, newborn screening; PS, pancreatic sufficiency; SCL, sweat chloride level.

Figure 1: Cystic fibrosis transmembrane conductance regulator (CFTR) gating activity measured on epithelial nasal cells in several groups of subjects. The values obtained for each sample and the groups are reported in table 2.



four of six were diagnosed with CF. These four patients with CF had pathological SCL, PS, mild lung disease and none was colonised by *P. aeruginosa*; two patients had impaired glucose tolerance (IGT). The mean CFTR gating activity on NEC (available from three patients with CF) was 11.2% (range 9.8–12.0%), significantly higher ($p < 0.001$) as compared with the mean activity of 6.9% found in eight patients with two class I–II mutations (figure 1 and table 2).

The two other patients (one with the p.Phe508del mutation and the other with the p.Ser1206* mutation *in trans*), aged 12 and 13 years, were diagnosed as CFTR-RD despite normal SCL (ie, 37 mmol/L) in one of them. The CFTR gating activity on NEC was available only for the first patient and revealed a residual activity of 15.0% (table 1).

The two remaining patients with the p.[Arg74Trp;Val201Met;Asp1270Asn] complex allele, carrying the p.Asp579Gly and the p.Asp1152His mutation *in trans*, respectively, were identified because CBAVD at the age of 37 and 48 years, respectively. The patient carrying the p.Asp579Gly mutation had altered SCL (ie, 118 mmol/L) despite the monosymptomatic clinical course and a residual CFTR activity on NEC of 19.1%; the other subject, carrying the p.Asp1152His mutation, had normal SCL and CFTR gating activity of 18.5% (table 1).

Of the two subjects with the p.[Arg74Trp;Asp1270Asn] complex allele, one was classified as CFTR-RD and had the c.[1210-34TG;¹² 1210-12T[5]] complex allele *in trans*. He had CBAVD alone, normal SCL and a CFTR gating activity on NEC of 18.9% (table 1). The other, revealed by NBS, was previously diagnosed as CFSPID and now classified as healthy at the age of 5 years old.

Both clinical data and SCL were normal in the two subjects with the p.Asp1270Asn mutation (*in trans* with a class I–II mutation). The CFTR gating activity on NEC, available only for one of them, was 44.0% (figure 1 and table 2). Finally, we analysed the residual CFTR gating activity on NEC from two carriers of the p.[Arg74Trp;Asp1270Asn] complex allele. They had values of 92.6% and 94.0%, respectively.

Furthermore, we studied *in vitro* either the synthesis of CFTR protein by western blot and the CFTR gating activity in

HEK293 cells transfected with the different mutations of the p.[Arg74Trp;Val201Met;Asp1270Asn] complex allele. Western blot analysis revealed two bands (figure 2). The C band represents the mature, fully glycosylated protein, while the B band represents the core-glycosylated protein. We calculated, for each mutant, the ratio between the C band and the total protein (band B+C). For the p.[Arg74Trp;Val201Met;Asp1270Asn] mutant, we obtained a ratio of 21%; the p.[Arg74Trp;Asp1270Asn] double mutant gave a ratio of 64% and, finally, the p.Asp1270Asn mutant is associated with a ratio of 83% (figure 2). These data compare with a 58% and 40% ratio obtained for the p.Phe508del and for the p.Asn1303Lys mutants, respectively (figure 2). We then evaluated the CFTR activity, that is, the rate of iodide efflux (figure 3) that was as high as 38.6%, 42.8% and 45.4% of the *wild type* for the triple, the double and the single mutant, respectively. These data compare with the values of 2.9% and 0.2% obtained for the p.Phe508del and for the p.Asn1303Lys mutants, respectively.

p.[Ile148Thr;Ile1023_Val1024del] complex allele and p.Ile148Thr mutation

All the five patients with the p.[Ile148Thr;Ile1023_Val1024del] complex allele (table 3) had a class I–II mutation *in trans* (ie, p.Phe508del: two subjects; p.Lys684SerfsX38: one subject; p.Asn1303Lys: one subject and p.Gly85Glu: one subject).

All the patients had pathological SCL and PI; lung function ranged from normal (three cases) to severe (two cases) lung impairment. Three patients had CFRD and two had severe liver disease that was the cause of death (table 3). The mean CFTR gating activity (available only for three patients) on NEC was 7.3% (range 6.5–7.8%; figure 1 and table 2). Such a value was not significantly different as compared with the mean value of 6.9% obtained in patients with CF with two class I–II mutations.

All four subjects with the p.Ile148Thr mutation were compound heterozygotes with a class I–II mutation on the other allele. They were adults, asymptomatic and had normal SCL (table 3). They were revealed as CF carrier by molecular analysis, being consanguineous of patients with CF. The CFTR

Table 2 CFTR gating activity measured on epithelial nasal cells in the following groups of patients: (A) CF with PI and two class I–II CFTR mutations; (B) CF with PI compound heterozygous for the [p.Ile148Thr;p.Ile1023_Val1024del] complex allele and a class I–II CFTR mutation; (C) CF with PS and compound heterozygous for a complex allele and a class I–II CFTR mutation; (D) CFTR-related disorders; (E) healthy subjects compound heterozygous for a class I–II mutation and a sequence variation with no functional effect; (F) healthy subjects heterozygous for a class I–II mutation; (G) healthy subjects heterozygous for a sequence variation with no functional effect; and (H) subjects with a undefined diagnosis

Group	n	CFTR genotype	Gating activity (%)	
			Individual	Mean (SD)
A	1	p.[Phe508del];[Phe508del]	5.9	6.9 (1.1)
	2	p.[Phe508del];[Phe508del]	6.2	
	3	p.[Phe508del];[Phe508del]	7.9	
	4	p.[Phe508del];[Phe508del]	8.1	
	5	p.[Phe508del];[Phe508del]	7.7	
	6	p.[Gly542*];[Ser1297PhefsX5]	7.7	
	7	p.[Gly542*];[Ser1297PhefsX5]	6.8	
	8	p.[Asn1303Lys];c.[579+1G>T]	5.2	
B	9	p.[Ile148Thr;Ile1023_Val1024del];[Phe508del]	7.7	7.3 (0.7)
	10	p.[Ile148Thr;Ile1023_Val1024del];[Phe508del]	7.8	
	11	p.[Ile148Thr;Ile1023_Val1024del];[Asn1303Lys]	6.5	
C	12	p.[Arg74Trp;Val201Met;Asp1270Asn];[Phe508del]	12.0	14.3 (4.4)
	13	p.[Arg74Trp;Val201Met;Asp1270Asn];[Asn1303Lys]	9.8	
	14	p.[Arg74Trp;Val201Met;Asp1270Asn];[Asn1303Lys]	11.8	
	15	c.[1210-34TG[12];1210-12T[5];2930C>T];[1000C>T]	19.5	
	16	c.[1210-34TG[12];1210-12T[5];2930C>T];[579+1G>T]	18.5	
D	17	p.[Arg74Trp;Val201Met;Asp1270Asn];[Phe508del]	15.0	19.5 (3.0)
	18	p.[Arg74Trp;Val201Met;Asp1270Asn];[Asp579Gly]	19.1	
	19	p.[Arg74Trp;Val201Met;Asp1270Asn];[Asp1152His]	18.5	
	20	c.[220C>T;3808G>A];[1210-34TG[12];1210-12[5]]	18.9	
	21	p.[Leu997Phe];[Gly542*]	24.8	
	22	p.[Leu997Phe];[Asn1303Lys]	21.3	
	23	c.[1210-34TG[12];1210-12T[5];2930C>T];[Asn1303Lys]	19.0	
E	24	p.[Asp1270Asn];[Asn1303Lys]	44.0	45.8 (6.9)
	25	p.[Ile148Thr];[Phe508del]	42.3	
	26	p.[Ile148Thr];[Phe508del]	41.0	
	27	c.[443T>C];[579+1G>T]	56.0	
F	28	p.[Phe508del];[=]	40.7	54.9 (15.4)
	29	p.[Gly542*];[=]	76.8	
	30	p.[Asn1303Lys];[=]	49.3	
	31	p.[Gly542*];[=]	53.0	
G	32	p.[Ile148Thr];[=]	87.4	87.6 (5.4)
	33	p.[Ile148Thr];[=]	86.3	
	34	p.[Leu997Phe];[Asn1303Lys]	86.4	
	35	p.[Leu997Phe];[Asn1303Lys]	78.9	
	36	p.[Arg74Trp;Asp1270Asn];[=]	92.6	
	37	p.[Arg74Trp;Asp1270Asn];[=]	94.0	
H	38	p.[Arg117Leu;Leu997Phe];[Arg117Leu;Leu997Phe]	39.0	
	39	p.[Leu997Phe];[Leu997Phe]	28.9	

CF, cystic fibrosis; PI, pancreatic insufficiency; PS, pancreatic sufficiency.

gating activity on NEC ranged from 41.0% to 56.0% (figure 1 and table 2). Finally, two further healthy subjects were revealed as heterozygous for the p.Ile148Thr mutation being partner of CF carriers. They had a CFTR activity on NEC of 87.4% and 86.3%, respectively.

p.[Arg117Leu;Leu997Phe] complex allele and p.Leu997Phe mutation

Two siblings were homozygous for the p.[Arg117Leu;Leu997Phe] complex allele (table 4, reported as online supplementary material). One is a woman diagnosed with CF with PS at 48 years because of recurrent pneumonia and chronic

colonisation by *P. aeruginosa*. The CFTR gating activity on NEC was 39.0% (figure 1 and table 2). Her sibling is a 58-year-old male with CBAVD alone, and a SCL of 88 mmol/L. We also studied two pairs of siblings compound heterozygous for the p.[Arg117Leu;Leu997Phe] complex allele and the p.Arg334Trp (1 sib-pair) or the p.Gly85Glu (the other sib-pair, table 3) mutations. All subjects were affected by CF with PS. The CFTR gating activity on NEC, available only for one adult female (compound heterozygous for the p.Arg334Trp mutation), was 19.5% (figure 1 and table 2).

Moreover, we observed two subjects homozygous for the p.Leu997Phe mutation (table 4). The first has CBAVD alone and

borderline SCL. The second, at the age of 21 years, has only chronic sinus disease with nasal polyposis (found at the age of 8 years old) and normal SCL. The CFTR gating activity on NEC was 28.9%.

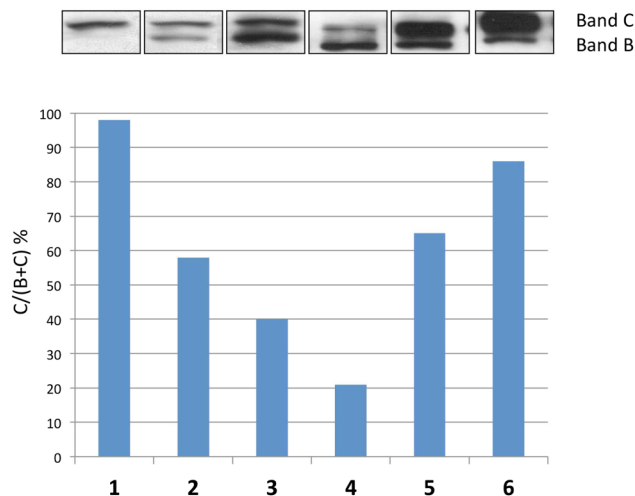


Figure 2 Western blot analysis of the cystic fibrosis transmembrane conductance regulator (CFTR) protein glycosylation in HEK293 cells stably expressing the *wild type* (1) or the mutant p.Phe508del (2), p.Asn1303Lys (3), p.[Arg74Trp; Val201Met; Asp1270Asn] (4), p.[Arg74Trp; Asp1270Asn] (5) and p.Asp1270Asn (6) proteins. Band C represents the mature, fully glycosylated protein, whereas band B represents the unglycosylated protein. The histogram shows the C/B+C ratio. The values are 1:98%, 2:58%, 3:4%, 4:21%, 5:65% and 6:86%.

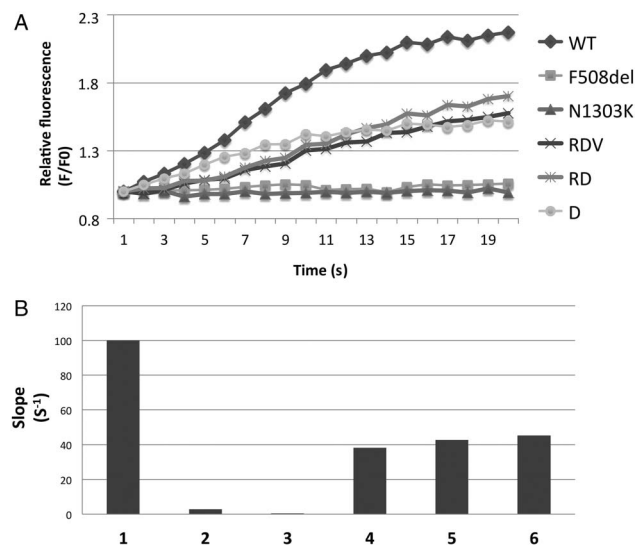


Figure 3 (A) Changes of fluorescence of stimulated HEK293 cells stably expressing the *wild type* (wt) or the mutants p. Phe508del, p.Asn1303Lys, p.[Arg74Trp; Val201Met; Asp1270Asn] (RDV), p.[Arg74Trp; Asp1270Asn] (RD) and p.Asp1270Asn (D) CFTR protein (mixture of 20 mM forskolin and 100 mM IBMX). The values were expressed as relative fluorescence F/F₀, where F is the change in fluorescence with time and F₀ is the minimum fluorescence. (B) The rate of fluorescence change was quantified from the maximal slope using the best fitting of the fluorescence change and was (1) wt: 100%, (2) p.Phe508del: 2.9%, (3) p. Asn1303Lys: 0.2%, (4) RDV: 38.6%, (5) DV: 42.8% and (6) D: 45.4%.

Table 3 Demographic and clinical data of subjects bearing the [p.Ile148Thr;p.Ile1023_Val1024del] complex allele or the p.Ile148Thr mutation

Gender	Current age (years)	Diagnosis	Age at diagnosis/enrolment (years/months)	Cause of diagnosis/enrolment	Allele 1	Allele 2	SCL* (mmol/L)	Current FEV ₁ t (%)	Pancreatic status	CFTR gating (%)	Other complications
M	31	CF	8 years	Respiratory	p.Ile148Thr; Ile1023_Val1024del	p.Phe508del	66	91	PI	7.7	CFRD; Pa col.; nasal polyposis; bronchiectasis
F	Died (34)	CF	6 years	Respiratory	p.Ile148Thr; Ile1023_Val1024del	p.Phe508del	112	24	PI	7.8	CFRD; Pa col.
M	Died (14)	CF	2 months	NBS	p.Ile148Thr; Ile1023_Val1024del	p.Lys684SerfsX38	91	69	PI	n.a.	Cirrhosis; Pa col.
F	Died (13)	CF	2 months	NBS	p.Ile148Thr; Ile1023_Val1024del	p.Asn1303Lys	101	45	PI	6.5	Cirrhosis; CFRD; Pa col.
F	18	CF	6 months	Respiratory	p.Ile148Thr; Ile1023_Val1024del	p.Gly85Glu	80	67	PI	n.a.	Recurrent pancreatitis; IGT; Pa col.; DIOS
F	39	Healthy	37 years	Familiarity	p.Ile148Thr	p.Phe508del	12	n.a.	PS	n.a.	
M	46	Healthy	39 years	Familiarity	p.Ile148Thr	p.Phe508del	11	n.a.	PS	42.3	
F	41	Healthy	41 years	Familiarity	p.Ile148Thr	p.Phe508del	15	n.a.	PS	41.0	
M	50	Healthy	38 years	Familiarity	p.Ile148Thr	c.579+1G>T	15	n.a.	PS	56.0	
M	32	Healthy	32 years	Familiarity	p.Ile148Thr	N	n.a.	n.a.	n.a.	87.4	
M	28	Healthy	28 years	Familiarity	p.Ile148Thr	N	n.a.	n.a.	n.a.	86.3	

* For patients with CF, we reported SCL at diagnosis while for healthy subjects we reported current SCL.

† For patients who had died, we reported the last FEV₁, available.

CF, cystic fibrosis; CFRD, cystic fibrosis-related diabetes; DIOS, distal intestine obstruction syndrome; FEV₁, forced expiratory volume in 1 second; IGT, impaired glucose tolerance; n.a., not assessed; N, wild-type allele; NBS, newborn screening; Pa col., *Pseudomonas aeruginosa* chronic colonisation; PI, pancreatic insufficiency; PS, pancreatic sufficiency; SCL, sweat chloride level.

Table 4 Demographic and clinical data of subjects bearing the [p.Arg117Leu;p.Leu997Phe] complex alleles or the p.Leu997Phe mutation

Gender	Current age (years)	Diagnosis	Age at diagnosis/enrolment (years/months)	Cause of diagnosis/enrolment	Allele 1	Allele 2	SCL* (mmol/L)	Current FEV ₁ (%)	Pancreatic status	CFTR gating	Other
F	48	CF (?)	48 years	Respiratory	p.[Arg117Leu; Leu997Phe]	p.[Arg117Leu; Leu997Phe]	90	113	PS	39.0	Pa col.; recurrent pneumonitis; bronchiectasis
M	58	CFTR-RD	58 years	CBAVD	p.[Arg117Leu; Leu997Phe]	p.[Arg117Leu; Leu997Phe]	88	n.a.	PS	n.a.	
F	40	CF	33 years	Respiratory	p.[Arg117Leu; Leu997Phe]	p.Arg334Trp	71	91	PS	19.5	Pa col.; nasal polyposis
M	35	CF	28 years	Familiarity	p.[Arg117Leu; Leu997Phe]	p.Arg334Trp	75	120	PS	n.a.	Nasal polyposis
M	33	CF	1 month	NBS	p.[Arg117Leu; Leu997Phe]	p.Gly85Glu	107	96	PS	n.a.	Nasal polyposis
M	24	CF	2 years	Familiarity	p.[Arg117Leu; Leu997Phe]	p.Gly85Glu	80	90	PS	n.a.	Nasal polyposis
M*	40	CFTR-RD	40 years	CBAVD	p.Leu997Phe	p.Leu997Phe	50	95	PS	n.a.	
M*	21	Healthy	8 years	Nasal polyposis	p.Leu997Phe	p.Leu997Phe	21	70	PS	28.9	Nasal polyposis
F	46	CFTR-RD	43 years	Bronchiectasis	p.Leu997Phe	p.Asn1303Lys	55	85	PS	n.a.	
F*	22	CFTR-RD	11 years	Recurrent pancreatitis	p.Leu997Phe	p.Gly542*	31	103	PS	24.8	Nasal polyposis
M	38	CFTR-RD	32 years	CBAVD	p.Leu997Phe	p.Phe508del	31	n.a.	PS	n.a.	
M	41	CFTR-RD	35 years	CBAVD	p.Leu997Phe	p.Phe508del	31	n.a.	PS	n.a.	
M*	44	CFTR-RD	39 years	CBAVD	p.Leu997Phe	p.Asn1303Lys	37	n.a.	PS	21.3	
M	36	CFTR-RD	30 years	CBAVD	p.Leu997Phe	p.Asn1303Lys	50	n.a.	PS	n.a.	
M*	39	CFTR-RD	25 years	CBAVD	p.Leu997Phe	p.Arg553*	31	n.a.	PS	n.a.	
M	28	CFTR-RD	25 years	Recurrent pancreatitis	p.Leu997Phe	p.Phe316LeufsX12	31	n.a.	PS	n.a.	
M	44	CFTR-RD	27 years	CBAVD	p.Leu997Phe	p.Arg334Trp	42	n.a.	PS	n.a.	
M	40	CFTR-RD	39 years	CBAVD	p.Leu997Phe	p.Arg334Trp	46	n.a.	PS	n.a.	
M*	39	CFTR-RD	38 years	CBAVD	p.Leu997Phe	p.Asp1152His	44	n.a.	PS	n.a.	
F	41	CFTR-RD	36 years	Recurrent pancreatitis	p.Leu997Phe	p.Asp1152His	41	n.a.	PS	n.a.	
M	40	CFTR-RD	35 years	CBAVD	p.Leu997Phe	c.[1210-34TG [12];1210-12T[5]]	39	n.a.	PS	n.a.	
M	39	CFTR-RD	36 years	Bronchiectasis	p.Leu997Phe	c.[1210-34TG [12];1210-12T[5]]	31	n.a.	PS	n.a.	
M	3	Healthy	1 month	NBS	p.Leu997Phe	p.Phe508del	31	n.a.	PS	n.a.	
F	2	Healthy	1 month	NBS	p.Leu997Phe	p.Lys684SerfsX38	37	n.a.	PS	n.a.	
M*	5	Healthy	1 month	NBS	p.Leu997Phe	p.Phe508del	15	n.a.	PS	n.a.	
M	2	Healthy	1 month	NBS	p.Leu997Phe	p.Gly542*	16	n.a.	PS	n.a.	
M	5	Healthy	1 month	NBS	p.Leu997Phe	p.Arg117His	35	n.a.	PS	n.a.	
M	3	Healthy	1 month	NBS	p.Leu997Phe	p.Asp1152His	26	n.a.	PS	n.a.	
M	5	Healthy	1 month	NBS	p.Leu997Phe	p.Asp1152His	27	n.a.	PS	n.a.	
F	5	Healthy	1 month	NBS	p.Leu997Phe	c.[1210-34TG [12];1210-12T[5]]	31	n.a.	PS	n.a.	
F	5	Healthy	1 month	NBS	p.Leu997Phe	c.[1210-34TG [12];1210-12T[5]]	32	n.a.	PS	n.a.	
M	47	Healthy	44 years	Familiarity	p.Leu997Phe	p.Phe508del	60	105	PS	n.a.	

Continued

Table 4 Continued

Gender	Current age (years)	Diagnosis	Age at diagnosis/enrolment (years/months)	Cause of diagnosis/enrolment	Allele 1	Allele 2	SCL* (mmol/L)	Current FEV ₁ (%)	Pancreatic status	CFTR gating	Other
M*	31	Healthy	23 years	Familiarity	p.Leu997Phe	p.Phe508del	29	n.a.	PS	36.9	
M	32	Healthy	32 years	Familiarity	p.Leu997Phe	p.Asn1303Lys	24	n.a.	PS	n.a.	
M	44	Healthy	40 years	Familiarity	p.Leu997Phe	c.489+1G>T	15	n.a.	PS	n.a.	
M	41	Healthy	40 years	Partner of CF carrier	p.Leu997Phe	c.[1210-34TG[12];1210-12T[5]]	60	100	PS	n.a.	
F*	32	Healthy	26 years	Familiarity	p.Leu997Phe	p.Glu279A>S	20	n.a.	PS	n.a.	
F	38	Healthy	38 years	Familiarity	p.Leu997Phe	p.Val938GlyfsX37	23	n.a.	PS	n.a.	
M	46	Healthy	38 years	Partner of CF carrier	p.Leu997Phe	p.Arg117His	20	n.a.	PS	n.a.	
F	43	Healthy	43 years	Partner of CF carrier	p.Leu997Phe	p.Arg117His	11	n.a.	PS	n.a.	
F*	32	Healthy	30 years	Familiarity	p.Leu997Phe	N	n.a.	n.a.	PS	86.4	
M	41	Healthy	37 years	Familiarity	p.Leu997Phe	N	n.a.	n.a.	PS	78.9	

*In the subjects marked with the asterisk, we performed the analysis of CFTR STR (see text).

CBAVD, congenital bilateral absence of vas deferens; CF, cystic fibrosis; CFTR-RD, cystic fibrosis transmembrane conductance regulator-related disorders; FEV₁, forced expiratory volume in 1 second; n.a., not assessed; N, wild-type allele; NBS, newborn screening; PS, pancreatic sufficiency; SCL, sweat chloride level; the values in italics represent SCL discordant with diagnosis; STR, short tandem repeats.

Eight patients compound heterozygous for the p.Leu997Phe and a class I–II mutation and six patients compound heterozygous for the p.Leu997Phe and another mutation (table 4) had monosymptomatic CFTR-RD (CBAVD: nine cases; recurrent pancreatitis: three cases; isolated bronchiectasis: two). Six of them had borderline SCL and eight had normal SCL. In two patients from this group, both carrying a class I–II mutation on the other allele, the CFTR residual gating activity on NEC was 24.8% and 21.3%, respectively.

Nine subjects (aged 2–5 years old) compound heterozygous for the p.Leu997Phe mutation and a class I–II mutation (four cases) or another mutation (five cases) had been classified as CFSPID. At present, all of them are asymptomatic (table 4) and have normal SCL.

Nine subjects (aged 31–46 years old) compound heterozygous for the p.Leu997Phe and a class I–II mutation (four cases) or another mutation (five cases) were classified as healthy, being all asymptomatic. Seven of the nine subjects had normal SCL, in two of the nine the SCL were in the borderline range over the last 2 years (60 mmol/L in both the cases in the last evaluation). The nine subjects had been identified for familiarity with patients with CF (six cases) or being partner of CF carrier subjects (three cases). For one of them, the CFTR activity on NEC was 36.9%.

Finally, two healthy subjects heterozygous for the p.Leu997Phe mutation were analysed for the CFTR gating activity on NEC that revealed values of 86.4% and 78.9% (tables 2 and 4, and figure 1).

In 10 subjects bearing the p.Leu997Phe mutation (including the two homozygous subjects), the analysis of the STR revealed that the IVS8CA, IVS17b TA and CA haplotype associated with the p.Leu997Phe mutation was invariably 20, 13 and 7, respectively, thus excluding a recurrent origin of the mutation.

c.[1210-34TG;12;1210-12T[5]2930C>T] complex allele

We studied three patients with the c.[1210-34TG[12];1210-12T[5];2930C>T] complex allele *in trans* with a class I–II mutation (table 5).

One had CF with PS, a well-maintained pulmonary function despite *P. aeruginosa* chronic colonisation and pathologic SCL. Two other patients had CFTR-RD. The CFTR gating activity measured on NEC was, respectively, 18.5% in the patient with CF and 19.0% in the first of the two patients suffering for CFTR-RD (figure 1 and table 2).

Finally, a synopsis of CF clinical expression in patients with different CFTR genotypes is reported in online supplementary table 2.

DISCUSSION

This is the first study including a large number of subjects, carrying different CFTR complex alleles that were evaluated for the genotype–phenotype correlation and were analysed for the CFTR residual gating activity using the *ex vivo* system of NEC obtained by brushing.

The p.[Arg74Trp;Val201Met;Asp1270Asn] was found in eight patients and is a mild CF-causing mutation whose clinical impact is influenced by the mutation *in trans*. We found this mutation *in trans* with a class I–II mutation, resulting either in CF-PS (four patients) or in CFTR-RD (two patients). In two other patients, the mutation was *in trans* with mutations with intrinsic residual CFTR function (ie, p.Asp579Gly and p.Asp1152His) that usually have a less severe clinical impact.^{42 43} They had CBAVD, and they compare with four patients previously described with the same complex allele *in trans* with mild

Table 5 Demographic and clinical data of subjects bearing the c.[1210-34TG[12];1210-12T[5];2930C>T] complex allele

Gender	Current age (years)	Diagnosis	Age at diagnosis (years)	Cause of diagnosis	Allele 1	Allele 2	SCL* (mmol/L)	Current FEV ₁ (%)	Pancreatic status	CFTR gating	Other
M	22	CF	18	Respiratory symptoms	c.[1210-34TG[12];1210-12T[5];2930C>T]	c.579+1G>T	87	104	PS	18.5	Pa col.
M	43	CFTR-RD	25	CBAVD	c.[1210-34TG[12];1210-12T[5];2930C>T]	p.Asn1303Lys	50	110	PS	19.0	Recurrent pancreatitis
F	32	CFTR-RD	19	Recurrent pancreatitis	c.[1210-34TG[12];1210-12T[5];2930C>T]	p.Asn1303Lys	41	100	PS	n.a.	

*For the patient with CF, we reported SCL at diagnosis while for the patients with CFTR-RD we reported current SCL.

CBAVD, congenital bilateral absence of vas deferens; CF, cystic fibrosis; CFTR-RD, cystic fibrosis transmembrane conductance regulator-related disorders; SCL, sweat chloride level; FEV₁, forced expiratory volume in 1 second; PS, pancreatic sufficiency; Pa col, *Pseudomonas aeruginosa* chronic colonisation.

mutations and CBAVD alone.^{16 17} The mean CFTR gating activity on NEC in three patients with CF that had *in trans* a class I-II mutation resulted 11.2% versus a mean of 6.2% ($p < 0.001$) found in patients with CF and two class I-II mutations and 17.5% in three patients with CFTR-RD, confirming the higher residual activity of the p.[Arg74Trp;Val201Met;Asp1270Asn] mutated protein. The study of *in vitro* expression (never previously performed for the triple mutant) was performed to define the effect of the complex allele without the influence of the mutation *in trans*. The p.[Arg74Trp;Val201Met;Asp1270Asn] construct causes a relevant reduction in the processing of the mature protein (ie, 21%), but it gives rise to a CFTR residual gating activity of 38% that compares with the residual activity of 2.9% and 0.2% observed for the p.Phe508del and for the p.Asn1303Lys mutants, respectively, adding on the milder functional effect of the p.[Arg74Trp;Val201Met;Asp1270Asn] complex allele as compared with class I-II mutations.

We found the p.[Arg74Trp;Asp1270Asn] complex allele in a child originally classified as CFSPID,^{9 44} currently asymptomatic at the age of 5 years old and in a patient with normal SCL and CBAVD (with a residual CFTR activity on NEC of 18.9%). The p.[Arg74Trp;Asp1270Asn] complex allele has been reported only in two asymptomatic subjects so far.¹⁷ Furthermore, we observed two adults with the p.Asp1270Asn *in trans* with the p.Phe508del and the p.Asn1303Lys, respectively, both asymptomatic with normal SCL. So far, the p.Asp1270Asn sequence variation has never been described in subjects with CF or CFTR-RD and it was found with a high frequency in healthy subjects.¹⁷ The CFTR activity assessed on NEC from two heterozygotes for the p.[Arg74Trp;Asp1270Asn] complex allele revealed a residual gating activity >90% in both cases, and the activity obtained from a subject compound heterozygous for the p.Asp1270Asn and the p.Phe508del was 44.0%, comparable with that obtained from heterozygous carriers of the p.Phe508del mutations. Finally, either the [p.Arg74Trp;p.Asp1270Asn] complex allele or the p.Asp1270Asn mutation caused only a slight reduction in the synthesis of the mature protein (65% and 86%) *in vitro* and were associated with a gating activity of 43% and 45%, respectively. All these data (that however need to be confirmed on larger number of cases) indicate that such mutations are not enough to cause disease⁴⁵ in contrast with the definition of *CFTR2* that classifies the p.Asp1270Asn as a mutation with varying clinical consequence (<http://www.cftr2.org/index.php>).

The p.[Ile148Thr;Ile1023_Val1024del] complex allele acts as a severe CFTR mutation. In fact, it was observed *in trans* with a

class I-II mutation in five patients with CF-PI and severe complications of the disease, and the CFTR gating activity on NEC was comparable with that observed in patients with CF with two class I-II mutations. On the contrary, the p.Ile148Thr variant does not have clinical impact: we found such sequence variation *in trans* with a class I-II *CFTR* mutation in four asymptomatic adults with a gating activity of CFTR on NEC ranging 41.0–56.0% (ie, in the range observed in carrier subjects of a class I-II mutation). Finally, the CFTR gating activity measured on NEC from two healthy volunteers heterozygous for the p.Ile148Thr (ie, 87.4% and 86.3%) further confirms that the sequence variation alone has a minimal functional effect, in agreement with the data obtained in model systems⁴⁶ and with its high frequency in healthy subjects.¹⁷

We studied two siblings homozygous for the p.[Arg117Leu;Leu997Phe] complex allele (ie, the first cases with such a genotype at our knowledge), both diagnosed in adulthood. The first was diagnosed as CF for the altered SCL with a mild clinical course and the sibling had CBAVD alone with pathological SCL. Similarly, four other patients compound heterozygous for the complex allele and another *CFTR* mutation have mild CF with PS. The residual CFTR gating activity on NEC of 39.0% obtained in one of the homozygous patients and that of 19.5% obtained in one of the cases compound heterozygous for the complex allele and the p.Arg334Trp mutation indicates that the p.[Arg117Leu;Leu997Phe] mutation is associated with a higher residual function as compared with class I-II mutations. These data compare with four patients compound heterozygous for the p.[Arg117Leu;Leu997Phe] and another *CFTR* mutation that displayed a mild CF with PS in two cases and a more severe form of the disease with or without PI in two.²⁰

We found the p.Leu997Phe homozygous or *in trans* with a known causing mutation either in patients with CFTR-RD (mainly CBAVD) or in healthy subjects, in agreement with previous reports.^{20 21 47} Furthermore, some of our subjects, classified as CFSPID in infancy, resulted free from symptom during the follow-up in the successive years, again in agreement with previous studies.⁴⁸ Going to the functional analysis of CFTR on NEC, in two patients with CFTR-RD and both compound heterozygous for the p.Leu997Phe and a class I-II mutation (ie, the p.Gly542* and the p.Asn1303Lys, respectively), we obtained a residual activity of 21.3% and 24.8%, while the activity measured on an asymptomatic subject compound heterozygous with the p.[Phe508del];[p.Leu997Phe] genotype was 36.9%. Thus, the p.Leu997Phe is associated with a higher residual gating activity of CFTR as compared with class I-II mutations, but

with a wide range of variability. The different clinical and functional impact of the p.Leu997Phe mutation does not appear to depend on the mutation *in trans* with the p.Leu997Phe. In fact, either among the CFTR-RD or among asymptomatic subjects, the p.Leu997Phe mutation was found in homozygosity or *in trans* with both class I–II mutations (ie, p.Phe508del, p.Asn1303Lys) and with mild mutations like the p.Asp1152His or the c.[1210-34TG[12];1210-12T[5]] complex allele.⁴³ Furthermore, the STR analysis⁴⁰ performed on several patients with CFTR-RD as well as on several asymptomatic subjects excluded the recurrent origin of the p.Leu997Phe mutation and, thus, the possibility that the mutation would be associated—in some cases—with other intragenic mutations that would interfere with its functional impact. We suggest that gene variants within the promoter region⁷ or at the 3'UTR⁸ may modulate CFTR expression explaining the variability of the p.Leu997Phe mutation. Of course, factors besides *CFTR* such as environment and modifier genes contribute to modulate the symptoms of the disease of each patient with CF.

Finally, the three patients with the c.[1210-34TG[12];1210-12T[5];2930C>T] complex allele had a severe mutation *in trans*, that is, p.Asn1303Lys: two cases and the c.579+1G>T: one case.⁴⁹ One had a very mild clinical course and was classified as CF since SCL were 87 mmol/L. The remaining were classified as CFTR-RD. The CFTR gating activity was 18.5% (in the patient with CF) and 19.0% in one of the patients with CFTR-RD, indicating that the c.[1210-34TG[12];1210-12T[5];2930C>T] complex allele only partially impairs the CFTR activity and, thus, it acts as a mild mutation. These results (to be extended on a larger number of cases with the same genotype) are in agreement with those reported in a patient compound heterozygous for the c.[1210-34TG[12];1210-12T[5];2930C>T] complex allele and the p.Phe508del mutation with a mild course of the disease (similar to our three cases), even if nasal potentials and monocyte functional assay results were compatible with a CF phenotype despite borderline SCL.²³

Some cases warrant a further comment due to the discordance between SCL (italics in tables 1–3), symptoms and the residual CFTR gating activity on NEC. Two asymptomatic adults with the p.Leu997Phe (one compound heterozygous with the severe p.Phe508del and another with the mild c.[1210-34TG[12];1210-12T[5]]) had SCL of 60 mmol/L (confirmed during the last 2 years). Furthermore, some discordance between SCL and mild clinical symptoms was found in the two siblings homozygous for the p.[Arg117Leu;Leu997Phe] complex allele (the first of which had a residual CFTR gating activity as high as 39%). The high SCL observed in all these cases may depend on the strong functional effect that the p.Leu997Phe specifically exerts on the Cl⁻ conductance in sweat cells observed *in vitro*.²¹ We found a discordance between SCL and the clinical expression of the disease also in patients with other genotypes, that is, the SCL of 118 mmol/L found in a patient compound heterozygous for the p.[Arg74Trp;Val201Met;Asp1270Asn] and the p.Asp579Gly mild mutation,⁴² again with a mild phenotype (CBAVD alone) and a residual gating activity not matching with the diagnosis of CF (ie, 19.1%). Finally, we found several patients with a clear clinical picture of CFTR-RD, a residual CFTR gating activity on NEC around 20% and SCL ranging 30–40 mmol/L that most authors report as normal values in adults²⁶ even if the European recommendations for CFTR-RD diagnosis suggest that SCL between 30 and 40 mmol/L would be considered borderline.² These discordances again point on the role of the whole

genomic background of patients with CF and the environment in which they live in modulating the clinical expression of the disease. However, in most of such patients, the measure of the CFTR gating activity on NEC was in agreement with the clinical picture. This is a poorly invasive tool that may contribute (once validated on a higher number of cases) to classify the patients and may help to predict the clinical severity of the disease, particularly in cases where discordance between clinical picture, SCL and genetics would occur.

Author affiliations

- ¹Dipartimento di Pediatria, Centro Regionale Toscano per la Fibrosi Cistica, Azienda Ospedaliero-Universitaria Meyer, Florence, Italy
- ²CEINGE-Biotecnologie Avanzate, Naples, Italy
- ³Dipartimento di Medicina Molecolare e Biotecnologie Mediche, Università di Napoli Federico II, Naples, Italy
- ⁴Centro Fibrosi Cistica, AOR San Carlo, Potenza, Italy
- ⁵Dipartimento di Biotecnologie Cellulari ed Ematologia, Istituto Pasteur Fondazione Cenci Bolognietti, Sapienza Università e Policlinico Umberto I, Rome, Italy
- ⁶Centro Regionale Fibrosi Cistica, Sezione Pediatrica, Dipartimento di Scienze Mediche Trasazionali, Università di Napoli Federico II, Naples, Italy
- ⁷Laboratorio di Genetica Medica, Ospedale Pediatrico Bambino Gesù, Rome, Italy
- ⁸Dipartimento di Scienze Mediche Trasazionali, Centro Regionale Fibrosi Cistica, Sezione Adulti, Università di Napoli Federico II, Naples, Italy
- ⁹Dipartimento Materno-Infantile, Ospedali Riuniti Ancona, Centro Regionale Fibrosi Cistica, Ancona, Italy
- ¹⁰Dipartimento di Pediatria, Centro Regionale Fibrosi Cistica, IRCCS G. Gaslini, Genova, Italy
- ¹¹Centro Regionale Fibrosi Cistica, Fondazione IRCCS Ca' Granda, Ospedale Maggiore Policlinico, Università degli Studi di Milano, Milan, Italy
- ¹²Dipartimento di Neuroscienze, Sezione di ORL, Università di Napoli Federico II, Naples, Italy
- ¹³Università Telematica Pegaso, Napoli, Italy
- ¹⁴Dipartimento di Biotecnologie e Bioscienze, Università di Milano Bicocca, Milan, Italy
- ¹⁵Unità di Fibrosi Cistica, IRCCS Ospedale Pediatrico Bambino Gesù, Rome, Italy
- ¹⁶Dipartimento di Scienze Neurologiche, Riproduttive ed Odontostomatologiche, Università di Napoli Federico II, Naples, Italy
- ¹⁷Centro Fibrosi Cistica, Sapienza Università e Policlinico Umberto I, Rome, Italy
- ¹⁸Laboratorio Genetica Medica, Ospedale Maggiore Policlinico, Milano, Italy
- ¹⁹Dipartimento di Bioscienze e Territorio, Università del Molise, Isernia, Italy

Acknowledgements Grants from Fondazione per la ricerca sulla Fibrosi Cistica (Verona), project call 2013, are gratefully acknowledged.

Contributors VT, GC and FA conceived and designed the study, interpreted data and wrote the paper; DS and ML recruited patients and contributed to manuscript preparation; VR, AA, VC, NC, RC, CC, PI, VL, SQ, MS and VMS recruited patients; AMDL, AE, MC, MC, AP, RC and FZ analysed the CFTR gating activity on nasal epithelial cells and described the results of either *in vitro* and *ex vivo* studies. All authors approved the final manuscript.

Competing interests None declared.

Patient consent Obtained.

Ethics approval Ethical committee of the University of Naples Federico II.

Provenance and peer review Not commissioned; externally peer reviewed.

REFERENCES

- 1 O'Sullivan BP, Freedman SD. Cystic fibrosis. *Lancet* 2009;373:1891–904.
- 2 Bombieri C, Claustres M, De Boeck K, Derichs N, Dodge J, Girodon E, Sermet I, Schwarz M, Tzetis M, Wilschanski M, Bareil C, Bilton D, Castellani C, Cuppens H, Cutting GR, Drevinek P, Farrell P, Elborn JS, Jarvi K, Kerem B, Kerem E, Knowles M, Macek MJr, Munck A, Radojkovic D, Seia M, Sheppard DN, Southern KW, Stuhmann M, Tullis E, Zielenski J, Pignatti PF, Ferec C. Recommendations for the classification of diseases as CFTR-related disorders. *J Cyst Fibros* 2011;10(Suppl 2): S86–S102.
- 3 Tomaiuolo R, Fausto M, Elce A, Strina I, Ranieri A, Amato F, Castaldo G, De Placido G, Alviggi C. Enhanced frequency of CFTR gene variants in couples who are candidates for assisted reproductive technology treatment. *Clin Chem Lab Med* 2011;49:1289–93.
- 4 Amato F, Bellia C, Cardillo G, Castaldo G, Ciaccio M, Elce A, Lembo F, Tomaiuolo R. Extensive molecular analysis of patients bearing CFTR-related disorders. *J Mol Diagn* 2012;14:81–9.

- 5 Terlizzi V, Tosco A, Tomaiuolo R, Sepe A, Amato N, Casale A, Mercogliano C, De Gregorio F, Improta F, Elce A, Castaldo G, Raia V. Prediction of acute pancreatitis risk based on PIP score in children with cystic fibrosis. *J Cyst Fibros* 2014;14:30–7.
- 6 Steiner B, Rosendahl J, Witt H, Teich N, Keim V, Schulz HU, Pfützner R, Löhner M, Gress TM, Nickel R, Landt O, Koudova M, Macek MJr, Farre A, Casals T, Desax MC, Gallati S, Gomez-Lira M, Audrezet MP, Férec C, des Georges M, Claustres M, Truninger K. Common CFTR haplotypes and susceptibility to chronic pancreatitis and congenital bilateral absence of the vas deferens. *Hum Mutat* 2011;32:912–20.
- 7 Giordano S, Amato F, Elce A, Monti M, Iannone C, Pucci P, Seia M, Angioni A, Castaldo G, Tomaiuolo R. Molecular and functional analysis of the large 5' promoter region of CFTR gene revealed pathogenic mutations in CF and CFTR-related disorders. *J Mol Diagn* 2013;15:331–40.
- 8 Amato F, Seia M, Giordano S, Elce A, Zarrilli F, Castaldo G, Tomaiuolo R. Gene mutation in MicroRNA target sites of CFTR gene: a novel pathogenic mechanism in cystic fibrosis? *PLoS ONE* 2013;8:e60448.
- 9 Ooi CY, Castellani C, Keenan K, Avolio J, Volpi S, Boland M, Kovesi T, Bjornson C, Chilvers MA, Morgan L, van Wylick R, Kent S, Price A, Solomon M, Tam K, Taylor L, Malitt KA, Ratjen F, Durie PR, Gonska T. Inconclusive diagnosis of cystic fibrosis after newborn screening. *Pediatrics* 2015;135:e1377–85.
- 10 Narzi L, Ferraguti G, Stamato A, Narzi F, Valentini SB, Lelli A, Delaroché I, Lucarelli M, Strom R, Quattrucci S. Does cystic fibrosis neonatal screening detect atypical CF forms? Extended genetic characterization and 4-year clinical follow-up. *Clin Genet* 2007;72:39–46.
- 11 Dequeker E, Stuhmann M, Morris MA, Casals T, Castellani C, Claustres M, Cuppens H, des Georges M, Férec C, Macek M, Pignatti PF, Scheffer H, Schwartz M, Witt M, Schwarz M, Girodon E. Best practice guidelines for molecular genetic diagnosis of cystic fibrosis and CFTR-related disorders—updated European recommendations. *Eur J Hum Genet* 2009;17:51–65.
- 12 Cutting GR. Cystic fibrosis genetics: from molecular understanding to clinical application. *Nat Rev Genet* 2015;16:45–56.
- 13 Castellani C, Cuppens H, Macek M Jr, Cassiman JJ, Kerem E, Durie P, Tullis E, Assael BM, Bombieri C, Brown A, Casals T, Claustres M, Cutting GR, Dequeker E, Dodge J, Doull I, Farrell P, Férec C, Girodon E, Johannesson M, Kerem B, Knowles M, Munck A, Pignatti PF, Radjokovic D, Rizzotti P, Schwarz M, Stuhmann M, Tzetis M, Zielenski J, Elborn JS. Consensus on the use and interpretation of cystic fibrosis mutation analysis in clinical practice. *J Cyst Fibros* 2008;7:179–96.
- 14 Lucarelli M, Bruno SM, Pierandrei S, Ferraguti G, Stamato A, Narzi F, Amato A, Cimino G, Bertasi S, Quattrucci S, Strom R. A genotypic-oriented view of CFTR genetics highlights specific mutational patterns underlying clinical macrocategories of Cystic Fibrosis. *Mol Med* 2015;21:257–75.
- 15 El-Seedy A, Girodon E, Norez C, Pajaud J, Pasquet MC, de Becdelièvre A, Bienvenu T, des Georges M, Cabet F, Lalau G, Bieth E, Blayau M, Becq F, Kitzis A, Fanen P, Ladeveze V. CFTR mutation combinations producing frequent complex alleles with different clinical and functional outcomes. *Hum Mutat* 2012;33:1557–65.
- 16 Brugnion F, Bilan F, Heraud MC, Grizard G, Janny L, Creveaux I. Outcome of intracytoplasmic sperm injection for a couple in which the man is carrier of CFTR p.[R74W;V201M;D1270N] and p.P841R mutations and his spouse a heterozygous carrier of p.F508del mutation of the cystic fibrosis transmembrane conductance regulator gene. *Fertil Steril* 2008;90:2004.e23–6.
- 17 Claustres M, Altieri JP, Guittard C, Templin C, Chevalier-Porst F, Des Georges M. Are p.1148T, p.R74W and p.D1270N CF causing mutations? *BMC Med Genet* 2004;5:19.
- 18 Monaghan KG, Highsmith WE, Amos J, Pratt VM, Roa B, Friez M, Pike-Buchanan LL, Buyse IM, Redman JB, Strom CM, Young AL, Sun W. Genotype-phenotype correlation and frequency of the 3199del6 cystic fibrosis mutation among 1148T carriers: results from a collaborative study. *Genet Med* 2004;6:421–5.
- 19 Saud L, Yan W, Rubenstein RC. Abnormal regulatory interactions of 1148T-CFTR and the epithelial Na⁺ channel in *Xenopus* oocytes. *Am J Physiol, Cell Physiol* 2007;292:C603–11.
- 20 Lucarelli M, Narzi L, Pierandrei S, Bruno SM, Stamato A, d'Avanzo M, Strom R, Quattrucci S. A new complex allele of the CFTR gene partially explains the variable phenotype of the L997F mutation. *Genet Med* 2010;12:548–55.
- 21 Derichs N, Schuster A, Grund I, Ernsting A, Stolpe C, Körtge-Jung S, Gallati S, Stuhmann M, Kozłowski P, Ballmann M. Homozygosity for L997F in a child with normal clinical and chloride secretory phenotype provides evidence that this cystic fibrosis transmembrane conductance regulator mutation does not cause cystic fibrosis. *Clin Genet* 2005;67:529–31.
- 22 Strom CM, Redman JB, Peng M. The dangers of including nonclassical cystic fibrosis variants in population-based screening panels: p.L997F, further genotype/phenotype correlation data. *Genet Med* 2011;13:1042–4.
- 23 Sorio C, Angiari C, Johansson J, Verzè G, Ettorre M, Buffelli M, Castellani C, Assael BM, Melotti P. Impaired CFTR function in mild cystic fibrosis associated with the S977F/T5TG12 complex allele in trans with F508del mutation. *J Cyst Fibros* 2013;12:821–5.
- 24 Farrell PM, Rosenstein BJ, White TB, Accurso FJ, Castellani C, Cutting GR, Durie PR, Legrys VA, Massie J, Parad RB, Rock MJ, Campbell PW III, Cystic Fibrosis Foundation. Guidelines for diagnosis of cystic fibrosis in newborns through older adults: Cystic Fibrosis Foundation consensus report. *J Pediatr* 2008;153:54–14.
- 25 Gibson LE, Cooke RE. A test for concentration of electrolytes in sweat in cystic fibrosis of the pancreas utilizing pilocarpine by iontophoresis. *Pediatrics* 1959;23:545–9.
- 26 Clinical and Laboratory Standard Institute (CLSI). *Sweat Testing: Sample Collection and Quantitative Analysis; Approved Guideline—Third Edition. CLSI document C34-A2*. Wayne, Pennsylvania, USA: Clinical and Laboratory Standard Institute, 2009. ISBN: 1-56238-713-8
- 27 Christiansen AL, Nybo M. Lack of harmonization in sweat testing for cystic fibrosis—a national survey. *Scand J Clin Lab Invest* 2014;74:708–12.
- 28 Salvatore M, Florida G, Amato A, Censi F, Carta C, de Stefano MC, Ferrari G, Tosto F, Capoluongo E, Caruso U, Castaldo G, Cirilli N, Corbetta C, Padoan R, Raia V, Taruscio D. The Italian pilot external quality assessment program for cystic fibrosis sweat test. *Clin Biochem* 2016;49:601–5.
- 29 Quanter PH, Stanojevic S, Cole TJ, Baur X, Hall GL, Culver BH, Enright PL, Hankinson JL, Ip MS, Zheng J, Stocks J, ERS global lung function initiative. Multiethnic reference values for spirometry for the 3–95 year age range: the global lung function 2012 equations. *Eur Respir J* 2012;40:1324–43.
- 30 Schluchter MD, Konstan MW, Drumm ML, Yankaskas JR, Knowles MR. Classifying severity of cystic fibrosis lung disease using longitudinal pulmonary function data. *Am J Respir Crit Care Med* 2006;174:780–6.
- 31 Lee TW, Brownlee KG, Conway SP, Denton M, Littlewood JM. Evaluation of a new definition for chronic *Pseudomonas aeruginosa* infection in cystic fibrosis patients. *J Cyst Fibros* 2003;2:29–34.
- 32 Loser C, Mollgaard A, Folsch UR. Faecal elastase 1: a novel, highly sensitive, and specific tubelless pancreatic function test. *Gut* 1996;39:580–6.
- 33 Morinville VD, Husain SZ, Bai H, Barth B, Alhosh R, Durie PR, Freedman SD, Himes R, Lowe ME, Pohl J, Werlin S, Wilschanski M, Uc A, INSPPIRE Group. Definitions of pediatric pancreatitis and survey of present clinical practices. *J Pediatr Gastroenterol Nutr* 2012;55:261–5.
- 34 Kelly A, Moran A. Update on cystic fibrosis-related diabetes. *J Cyst Fibros* 2013;12:318–31.
- 35 Debray D, Kelly D, Houwen R, Strandvik B, Colombo C. Best practice guidance for the diagnosis and management of cystic fibrosis-associated liver disease. *J Cyst Fibros* 2011;10:S29–36.
- 36 Stevens DA, Moss RB, Kurup VP, Knutsen AP, Greenberger P, Judson MA, Denning DW, Cramer R, Brody AS, Light M, Skov M, Maish W, Mastella G, Participants in the Cystic Fibrosis Foundation Consensus Conference. Allergic bronchopulmonary aspergillosis in cystic fibrosis—state of the art: Cystic Fibrosis Foundation Consensus Conference. *Clin Infect Dis* 2003;37(Suppl 3):S225–64.
- 37 Tomaiuolo R, Spina M, Castaldo G. Molecular diagnosis of Cystic Fibrosis: comparison of four analytical procedures. *Clin Chem Lab Med* 2003;41:26–32.
- 38 Tomaiuolo R, Sanguolo F, Bombieri C, Bonizzato A, Cardillo G, Raia V, D'Apice MR, Bettin MD, Pignatti PF, Castaldo G, Novelli G. Epidemiology and a novel procedure for large scale analysis of CFTR rearrangements in classic and atypical CF patients: a multicentric Italian study. *J Cyst Fibros* 2008;7:347–51.
- 39 Lucarelli M, Narzi L, Piergentili R, Ferraguti G, Grandoni F, Quattrucci S, Strom R. A 96-well formatted method for exon and exon/intron boundary full sequencing of the CFTR gene. *Anal Biochem* 2006;353:226–35.
- 40 Elce A, Boccia A, Cardillo G, Giordano S, Tomaiuolo R, Paoletta G, Castaldo G. Three novel CFTR polymorphic repeats improve segregation analysis for cystic fibrosis. *Clin Chem* 2009;55:1372–9.
- 41 Taruscio D, Falbo V, Florida G, Salvatore M, Pescucci C, Cantafora A, Marongiu C, Baroncini A, Calzolari E, Cao A, Castaldo G, Dagna Bricarelli F, Guanti G, Nitsch L, Pignatti PF, Rosatelli C, Salvatore F, Zuffardi O. Quality assessment in cytogenetic and molecular genetic testing: the experience of the Italian project on standardisation and quality assurance. *Clin Chem Lab Med* 2004;42:915–21.
- 42 Salvatore D, Tomaiuolo R, Abate R, Vanacore B, Manieri S, Mirauda MP, Scavone A, Schiavo MV, Castaldo G, Salvatore F. Cystic fibrosis presenting as metabolic alkalosis with hypochloremia in a boy with the rare D579G mutation. *J Cyst Fibros* 2004;3:135–6.
- 43 Terlizzi V, Carnovale V, Castaldo G, Castellani C, Cirilli N, Colombo C, Corti F, Cresta F, D'Adda A, Lucarelli M, Lucidi V, Macciaroli A, Madarena E, Padoan R, Quattrucci S, Salvatore D, Zarrilli F, Raia V. Clinical expression of patients with the D1152H CFTR mutation. *J Cyst Fibros* 2015;14:447–52.
- 44 Ren CL, Fink AF, Petren K, Borowitz DS, McColley SA, Sanders DB, Rosenfeld M, Marshall BC. Outcomes of infants with indeterminate diagnosis detected by cystic fibrosis newborn screening. *Pediatrics* 2015;135:e1386–92.
- 45 Fanen P, Clain J, Labarthe R, Hulin P, Girodon E, Pagesy P, Goossens M, Edelman A. Structure-function analysis of a double-mutant cystic fibrosis transmembrane conductance regulator protein occurring in disorders related to cystic fibrosis. *FEBS Lett* 1999;452:371–4.
- 46 Choi JY, Muallem D, Kiselyov K, Lee MG, Thomas PJ, Muallem S. Aberrant CFTR-dependent HCO₃⁻ transport in mutations associated with cystic fibrosis. *Nature* 2001;410:94–7.
- 47 Gomez Lira M, Benetazzo MG, Marzari MG, Bombieri C, Belpinati F, Castellani C, Cavallini GC, Mastella G, Pignatti PF. High frequency of cystic fibrosis transmembrane regulator mutation L997F in patients with recurrent idiopathic

- pancreatitis and in newborns with hypertrypsinemia. *Am J Hum Genet* 2000;66:2013–14.
- 48 Salinas DB, Sosnay PR, Azen C, Young S, Raraigh KS, Keens TG, Kharrazi M. Benign outcome among positive cystic fibrosis newborn screen children with non-CF-causing variants. *J Cyst Fibros* 2015;14:714–19.
- 49 Castaldo G, Fuccio A, Cazeneuve C, Picci L, Salvatore D, Raia V, Scarpa M, Goossens M, Salvatore F. Detection of five rare cystic fibrosis mutations peculiar to Southern Italy: implications in screening for the disease and phenotype characterization for patients with homozygote mutations. *Clin Chem* 1999;45:957–62.