

Contents

Diagnostics

- 575** Improving diagnostic precision, care and syndrome definitions using comprehensive next-generation sequencing for the inherited bone marrow failure syndromes *I Ghemlas, H Li, B Zlateska, R Klaassen, C V Fernandez, R A Yanofsky, J Wu, Y Pastore, M Silva, J H Lipton, J Brossard, B Michon, S Abish, M Steele, R Sinha, M Belletrutti, V R Breakey, L Jardine, L Goodyear, L Sung, S Dhanraj, E Reble, A Wagner, J Beyene, P Ray, S Meyn, M Cada, Y Dror*

- 585** Prenatal genomic microarray and sequencing in Canadian medical practice: towards consensus *J A Buchanan, D Chitayat, E Kolomietz, H C Lee, S W Scherer, M D Speevak, H Sroka, D J Stavropoulos*

Complex traits

- 587** Haplotype-based approach to known MS-associated regions increases the amount of explained risk *P Khankehanian, P-A Gourraud, A Lizee, D S Goodin*

- 595** Contribution of the low-frequency, loss-of-function p.R270H mutation in *FFAR4 (GPR120)* to increased fasting plasma glucose levels *A Bonnefond, A Lamri, A Leloire, E Vaillant, R Roussel, C Lévy-Marchal, J Weill, P Galan, S Hercberg, S Ragot, S Hadjadj, G Charpentier, B Balkau, M Marre, F Fumeron, P Froguel*

New loci

- 599** Whole exome sequencing identifies *LRP1* as a pathogenic gene in autosomal recessive keratosis pilaris atrophicans *J Klar, J Schuster, T N Khan, M Jameel, K Mäbert, L Forsberg, S A Baig, S M Baig, N Dahl*

- 607** Recessive *DEAF1* mutation associates with autism, intellectual disability, basal ganglia dysfunction and epilepsy *A Rajab, M Schuelke, E Gill, A Zwirner, F Seifert, S M Gonzalez, E Ktnerim*

- 612** Continued lessons from the *INS* gene: an intronic mutation causing diabetes through a novel mechanism *D Carmody, S-Y Park, H Ye, M E Perrone, G Alkorta-Aranburu, H M Highland, C L Hanis, L H Philipson, G I Bell, S A W Greeley*

Genotype-phenotype correlations

- 617** A *CASQ1* founder mutation in three Italian families with protein aggregate myopathy and hyperCKaemia *C D Blasi, S Sansanelli, A Ruggieri, M Moriggi, M Vasso, A P D'Adamo, F Blasevich, S Zanotti, C Paolini, F Protasi, F Tezzon, C Gelfi, L Morandi, M Pessia, M Mora*

Phenotypes

- 627** Mutations in *COQ4*, an essential component of coenzyme Q biosynthesis, cause lethal neonatal mitochondrial encephalomyopathy *W K Chung, K Martin, C Jalas, S R Braddock, J Juusola, K G Monaghan, B Warner, S Franks, M Yudkoff, L Lulis, R H Rhodes, V Prasad, E Tori, M T Cho, M Shinawi*

- 636** Combined mineralocorticoid and glucocorticoid deficiency is caused by a novel founder nicotinamide nucleotide transhydrogenase mutation that alters mitochondrial morphology and increases oxidative stress *A Weinberg-Shukron, A Abu-Libdeh, F Zhadeh, L Carmel, A Kogot-Levin, L Kamal, M Kanaan, S Zeligson, P Renbaum, E Levy-Lahad, D Zangen*

Cancer genetics

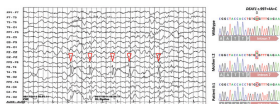
- 642** The *BRCA2* polymorphic stop codon: stuff or nonsense? *J E Higgs, E F Harkness, N L Bowers, E Howard, A J Wallace, F Laloo, W G Newman, D G Evans*

Book review

- 646** Scientific Writing for Impact Factor Journals *M Alriyami, C Polychronakos*

September 2015 Volume 52 Issue 9

JMG
Journal of Medical Genetics



jmg.bmj.com



BMJ

Cover credit: Epileptiform discharges due to *DEAF1* mutations, from Rajab *et al.*, pg 607.



Adopted as the official Journal of the Canadian College of Medical Geneticists

Receive regular table of contents by email. Register using this QR code.



This article has been chosen by the Editor to be of special interest or importance and is freely available online.



This article has been made freely available online under the BMJ Journals Open Access scheme. See <http://jmg.bmj.com/site/about/guidelines.xhtml#open>

C O P E COMMITTEE ON PUBLICATION ETHICS

This journal is a member of and subscribes to the principles of the Committee on Publication Ethics <http://publicationethics.org/>



When you have finished with this please recycle it

MCQs The online version of this article contains multiple choice questions hosted on BMJ Learning.