

## Contents

### Review

- 361** Hereditary diffuse gastric cancer: updated clinical guidelines with an emphasis on germline *CDH1* mutation carriers *R S van der Post, I P Vogelaar, F Carneiro, P Guilford, D Huntsman, N Hoogerbrugge, C Caldas, K E C Schreiber, R H Hardwick, M G E M Ausems, L Bardram, P R Benusiglio, T M Bisseling, V Blair, E Bleiker, A Boussioutas, A Cats, D Coit, L DeGregorio, J Figueiredo, J M Ford, E Heijkoop, R Hermens, B Humar, P Kaurah, G Keller, J Lai, M J L Ligtenberg, M O'Donovan, C Oliveira, H Pinheiro, K Ragnath, E Rasenberg, S Richardson, F Roviello, H Schackert, R Seruca, A Taylor, A ter Huurne, M Tischkowitz, S T A Joe, B van Dijk, N C T van Grieken, R van Hillegersberg, J W van Sandick, R Vehof, J H van Krieken, R C Fitzgerald*

### Complex traits

- 375** Progressive influence of body mass index-associated genetic markers in rural Gambians *A J Fulford, K K Ong, C E Elles, A M Prentice, B J Hennig*

### Developmental defects

- 381** Nonsense mutation in the *WDR73* gene is associated with Galloway-Mowat syndrome *T Ben-Omran, S Fahiminiya, N Sorfazlian, M Almurieki, Z Nawaz, J Nadaf, K A Khadija, S Zaineddin, H Kamel, J Majewski, V Tropepe*
- 391** Minichromosome maintenance complex component 8 (MCM8) gene mutations result in primary gonadal failure *Y Tenenbaum-Rakover, A Weinberg-Shukron, P Renbaum, O Lobel, H Eideh, S Gulsuner, D Dahary, A Abu-Rayyan, M Kanaan, E Levy-Lahad, D Bercovich, D Zangen*

### New loci

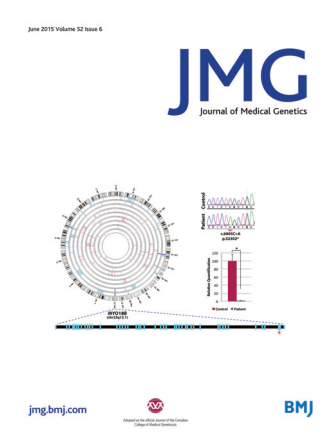
- 400** A novel syndrome of Klippel-Feil anomaly, myopathy, and characteristic facies is linked to a null mutation in *MYO18B* *A M Alazami, A Y Kentab, E Faqeih, J Y Mohamed, H Alkhalidi, H Hijazi, F S Alkuraya*

### Genotype-phenotype correlations

- 405** Familial periventricular nodular heterotopia, epilepsy and Melnick-Needles Syndrome caused by a single *FLNA* mutation with combined gain-of-function and loss-of-function effects *E Parrini, D Mei, M A Pisanti, S Catarzi, D Pucatti, C Bianchini, M Mascalchi, E Bertini, A Morrone, M L Cavaliere, R Guerrini*
- 413** Rare variants in *SOS2* and *LZTR1* are associated with Noonan syndrome *G L Yamamoto, M Agüena, M Gos, C Hung, J Pilch, S Fahiminiya, A Abramowicz, I Cristian, M Buscarilli, M S Naslavsky, A C Malaquias, M Zatz, O Bodamer, J Majewski, A A L Jorge, A C Pereira, C A Kim, M R Passos-Bueno, D R Bertola*

### Cancer genetics

- 422** Bilateral vestibular schwannomas in older patients: NF2 or chance? *D G Evans, S Freeman, C Gokhale, A Wallace, S K Lloyd, P Axon, C L Ward, S Rutherford, A King, S M Huson, R T Ramsden, on Behalf of the Manchester NF2 service*
- 426** A germline mutation in *PBRM1* predisposes to renal cell carcinoma *P R Benusiglio, S Couvé, B Gilbert-Dussardier, S Deveaux, H Le Jeune, M Da Costa, G Fromont, F Memeteau, M Yacoub, I Coupier, D Leroux, A Méjean, B Escudier, S Giraud, A-P Gimenez-Roqueplo, C Blondel, E Frouin, B T Teh, S Ferlicot, B Bressac-de Pailletets, S Richard, S Gad*



Cover credit: Homozygosity mapping of the disease locus to *MYO18B* from Alazami *et al*, pg 400.



Adopted as the official Journal of the Canadian College of Medical Geneticists

Receive regular table of contents by email. Register using this QR code.



This article has been chosen by the Editor to be of special interest or importance and is freely available online.



This article has been made freely available online under the BMJ Journals Open Access scheme. See <http://jmg.bmj.com/site/about/guidelines.xhtml#open>

C O P E COMMITTEE ON PUBLICATION ETHICS

This journal is a member of and subscribes to the principles of the Committee on Publication Ethics <http://publicationethics.org/>



MCQs The online version of this article contains multiple choice questions hosted on BMJ Learning.