



OPEN ACCESS

ORIGINAL ARTICLE

# TBX4 mutations (small patella syndrome) are associated with childhood-onset pulmonary arterial hypertension

Wilhelmina S Kerstjens-Frederikse,<sup>1</sup> Ernie M H F Bongers,<sup>2</sup> Marcus T R Roofthoof,<sup>3</sup> Edward M Leter,<sup>4</sup> J Menno Douwes,<sup>3</sup> Arie Van Dijk,<sup>5</sup> Anton Vonk-Noordegraaf,<sup>6</sup> Krista K Dijk-Bos,<sup>1</sup> Lies H Hoefsloot,<sup>2</sup> Elke S Hoendermis,<sup>7</sup> Johan J P Gille,<sup>4</sup> Birgit Sikkema-Raddatz,<sup>1</sup> Robert M W Hofstra,<sup>1</sup> Rolf M F Berger<sup>3</sup>

► Additional material is published online only. To view please visit the journal online (<http://dx.doi.org/10.1136/jmedgenet-2012-101152>).

For numbered affiliations see end of article.

## Correspondence to

Dr Wilhelmina S Kerstjens-Frederikse, Department of Genetics, University of Groningen, University Medical Center Groningen, UMCG, P.O. Box 30.001, 9700RB Groningen, The Netherlands; [w.s.kerstjens@umcg.nl](mailto:w.s.kerstjens@umcg.nl)

RMWH and RMFB contributed equally.

Received 5 December 2012  
Revised 13 March 2013  
Accepted 19 March 2013  
Published Online First  
16 April 2013



Open Access  
Scan to access more  
free content

**To cite:** Kerstjens-Frederikse WS, Bongers EMHF, Roofthoof MTR, et al. *J Med Genet* 2013;**50**:500–506.

## ABSTRACT

**Background** Childhood-onset pulmonary arterial hypertension (PAH) is rare and differs from adult-onset disease in clinical presentation, with often unexplained mental retardation and dysmorphic features (MR/DF). Mutations in the major PAH gene, *BMPR2*, were reported to cause PAH in only 10–16% of childhood-onset patients. We aimed to identify more genes associated with childhood-onset PAH.

**Methods** We studied 20 consecutive cases with idiopathic or heritable PAH. In patients with accompanying MR/DF (n=6) array-comparative genomic hybridisation analysis was performed, with the aim of finding common deletion regions containing candidate genes for PAH. Three patients had overlapping deletions of 17q23.2. *TBX2* and *TBX4* were selected from this area as candidate genes and sequenced in all 20 children. After identifying *TBX4* mutations in these children, we subsequently sequenced *TBX4* in a cohort of 49 adults with PAH. Because *TBX4* mutations are known to cause small patella syndrome (SPS), all patients with newly detected *TBX4* mutations were screened for features of SPS. We also screened a third cohort of 23 patients with SPS for PAH.

**Results** *TBX4* mutations (n=3) or *TBX4*-containing deletions (n=3) were detected in 6 out of 20 children with PAH (30%). All living patients and two parents with *TBX4* mutations appeared to have previously unrecognised SPS. In the adult PAH-cohort, one *TBX4* mutation (2%) was detected. Screening in the cohort of (predominantly adult) SPS patients revealed no PAH.

**Conclusions** These data indicate that *TBX4* mutations are associated with childhood-onset PAH, but that the prevalence of PAH in adult *TBX4* mutation carriers is low.

## INTRODUCTION

Pulmonary arterial hypertension (PAH) is an intrinsic vascular disease of the lungs, which leads to high pulmonary vascular resistance and increased pulmonary artery pressure. These result in right ventricular hypertrophy and, eventually, death from right ventricular failure. The histological findings in PAH include medial hypertrophy, intimal fibrosis and plexiform lesions. Thrombosis, inflammation and a disrupted balance between proliferation and

apoptosis have been suggested to play a role in this typical vascular remodelling process.<sup>1</sup>

PAH is classified as group 1 in the five groups of the Updated Clinical Classification of Pulmonary Hypertension (PH) (Dana Point, 2008).<sup>2</sup> PAH may be idiopathic (IPAH, subgroup 1.1) or heritable (HPAH, mutations in *BMPR2*, *ALK1*, or *ENG*, subgroup 1.2), associated with drugs or toxins (subgroup 1.3), connective tissue disorders or several other diseases (subgroup 1.4), or a specific disease of the newborn (persistent PH, subgroup 1.5).<sup>2</sup>

This study focuses on children in subgroups 1.1 and 1.2. Our aim was to identify genes associated with PAH in children.

PAH is a genetically heterogeneous disease, but the major gene identified for PAH is *BMPR2*, a gene of the *TGF-β* family involved in BMP-SMAD signaling.<sup>3</sup> Mutations in two other members of the *TGF-β* super family (*ALK1* and *ENG*) may also cause PAH, which in most patients is associated with hereditary haemorrhagic telangiectasia (HHT).<sup>4–5</sup> Several infrequent mutations in genes of the SMAD-family are reported to be associated with PAH,<sup>6–7</sup> and recently a *CAV1* mutation was detected by exome sequencing in a three-generation family with PAH.<sup>8</sup> Epigenetic factors may also contribute to the disease.<sup>9</sup>

Mutations in *BMPR2* were reported to cause PAH in 10–16% of childhood-onset PAH patients,<sup>10–12</sup> compared with 21–26% of adult-onset sporadic PAH patients and 69% of familial PAH patients,<sup>13–14</sup> so the genetic aetiology of the disease may be different in childhood-onset.<sup>14–15</sup>

Childhood-onset PAH is rare, with a prevalence estimated at 0.7 cases per million.<sup>16</sup>

There are, thus, no large cohorts available. It presents with more pulmonary vascular medial hypertrophy, and has a higher proportion of responders to acute pulmonary vascular dilatation tests than adult-onset PAH.<sup>17–18</sup> PAH in children is frequently associated with mental retardation and/or dysmorphic features (MR/DF), without a syndrome diagnosis.<sup>12</sup> This observation led to the strategy we chose for looking for PAH candidate genes. We performed array-comparative genomic hybridisation (aCGH) screening of all children with PAH and MR/DF, with the aim of detecting deletion regions harbouring candidate genes for PAH.

## PATIENTS AND METHODS

## Patients

## Initial study population

## Childhood-onset PAH patients

In the National Referral Center for Pediatric PH in The Netherlands, DNA was collected from 20 consecutive patients (10 male, 10 female), diagnosed with childhood-onset PAH (IPAH/HPAH, subgroups 1.1 and 1.2 in the 2008 Dana Point Classification)<sup>2</sup> and enrolled at the referral centre between 2003 and 2010. Patient characteristics are shown in table 1.

None of the patients had affected relatives, and six patients had unexplained MR/DF (patients 1, 2, 3, 15, 19, 20). Three patients had previously identified *BMP2* mutations (patients 7, 8 and 9; table 1), but were included because *BMP2* mutations have a low penetrance for PAH and the modifiers might be genetic.

No haemodynamic data were available for three patients because they died before cardiac catheterisation could be performed. Echocardiography and autopsy were performed in all three, and advanced pulmonary vascular lesions were present, including intima fibrosis and plexiform lesions. In one patient, histopathological features of pulmonary veno-occlusive disease (PVOD) were present, leading to the diagnosis being revised from PAH to PVOD postmortem.

## Additional patient cohorts

After identifying *TBX4* deletions and mutations, two additional cohorts were screened:

## Adult-onset PAH patients

An additional cohort of 49 adult-onset PAH patients was tested for *TBX4* mutations. The cohort included 40 IPAH and 9

HPAH patients with *BMP2* mutations; all diagnoses were confirmed with right heart catheterisation (RHC).

## Small patella syndrome patients

Because *TBX4* mutations are known to cause small patella syndrome (SPS), a highly variable lower limb malformation syndrome, a group of 23 patients with SPS was screened for clinical and echocardiographical signs of PAH; RHC was performed if indicated by the criteria proposed in the European guidelines for PH.<sup>19</sup> This cohort included the two carrier parents and came from 11 families. They were aged 11–67 years (one patient was 11 years old, all the others were older than 20 years). They all carried disease-causing mutations in *TBX4* but did not have known symptoms of PAH. Three of the families were described in the original paper on *TBX4* mutations causing SPS.<sup>20</sup>

## Genetic analyses

Technical details of the analyses are provided in the online supplementary data appendix S1.

## aCGH analysis: screening for deletions

Of the 20 patients with childhood-onset PAH, six also had unexplained MR/DF. We performed aCGH analysis in these six patients (patients 1, 2, 3, 15, 19, 20), which is a standard diagnostic procedure in patients with MR/DF in our hospital. If a deletion or duplication was detected, their parents were also tested.

Mutation and deletion screening of *TBX2* and *TBX4* by direct sequencing and multiplex ligation-dependent probe amplification

From the six known genes detected by aCGH and located in overlapping 17q23.2 deletion regions, we selected *TBX2* and *TBX4* as candidate genes for PAH, based on their function

**Table 1** Clinical characteristics and results of molecular analyses of 20 childhood-onset PAH patients

Patient number	Age <sup>dx</sup>	Sex	mPAP (10–20)	PVRi (<2.5)	mPCWP (<15)	CI (3.0–5.5)	MR/DF	Mutation	Parents Mo/Fa
1	2.2	m	41	11	6	3.5	+	Del 17q23.2 (55.5–57.7 Mb)	no/no
2	7.0	m	43	7	10	2.7	+	Del 17q23 (56.7–58.7 Mb)	no/n.a.
3	2.8	m	26	6	6	–	+	Del 17q23.2 (55.6–57.7 Mb)	no/no
4	2.4	f	31	–	7	–	–	<i>TBX4</i> exon 3 c.355_356het_insA;p.Ile119Asn fsX6	yes/no
5	15.4	f	84	27	10	2.7	–	<i>TBX4</i> exon 8 c.1164_1165het_insC;p.Arg389Gln fsX30	no/yes
6†	8.1	m	65	25	4	2.4	–	<i>TBX4</i> exon 8 c.1145A>C;p.Tyr382Ser	n.a./n.a.
7†	10.2	m	–	–	–	–	–	<i>BMP2</i> c.399del T;p.Pro134Leu fsX18	no/no
8	7.0	f	66	27	8	2.1	–	<i>BMP2</i> c.47G>A;p.Trp16X	no/no
9	15.8	f	57	20	10	3.2	–	<i>BMP2</i> c.2695C>T;p.Arg899X	no/no
10	13.7	m	82	31	7	1.4	–	–	–
11	4.4	f	34	12	5	4.3	–	–	–
12	14.2	m	91	47	13	1.7	–	–	–
13	3.1	f	33	10	10	2.9	–	–	–
14	2.1	m	55	18	8	2.8	–	–	–
15	0.5	f	28	5	10	2.8	+	–	–
16	12.8	f	47	36	9	2.1	–	–	–
17†	1.3	m	–	–	–	–	–	–	–
18†	6.1	f	57	12	11	4.0	–	–	–
19†	8.0	m	64	12	6	2.7	+	–	–
20†	0.3	f	–	–	–	–	+	–	–

Patients 7, 17 and 20 died before right heart catheterisation could be performed, but echocardiography and autopsy confirmed a diagnosis of idiopathic PAH in all three.

†, deceased; age<sup>dx</sup>, age at diagnosis (in years); sex: m, male/f, female; mPAP, mean pulmonary arterial pressure (mm Hg, normal value between brackets); PVRi, pulmonary vascular resistance indexed for body surface area (Wood's Units times m<sup>2</sup>, normal value between brackets); mPCWP, mean pulmonary capillary wedge pressure (mm Hg), CI, cardiac index (l/min/m<sup>2</sup>, normal value between brackets); MR/DF, mental retardation/dysmorphic features. parents: Mo, mother; Fa, father; no/no, both parents tested, no mutation; yes, mutation also present in parent; n.a., parent not available for testing.

and data in the literature. T-box genes are transcription factors known to be involved in several developmental and cardiovascular diseases and are connected with the BMP/SMAD pathway.<sup>21–23</sup> All 20 childhood-onset PAH patients, regardless of whether we had previously identified a deletion or mutation in them, were then screened for mutations in *TBX2* and *TBX4*. For patients in whom we found a mutation in one of these genes, we also screened the parents for the same mutation. Intragenic deletion detection for the *TBX2* and *TBX4* genes was performed by multiplex ligation-dependent probe amplification (MLPA).

**Clinical evaluation of *TBX4* mutation carriers**

Patients with a *TBX4* mutation, or with deletions including *TBX4*, were physically examined by a clinical geneticist and radiographs of the pelvis, knees and feet were made to study pelvic and lower limb malformations associated with SPS.

**RESULTS**

**aCGH in six childhood-onset PAH patients with unexplained MR/DF**

aCGH was performed in six childhood-onset PAH patients because of associated but unexplained MR/DF (table 1). In three of these (patients 1–3), we detected a microdeletion in 17q23.2 which was not present in either of their parents and was, therefore, considered to be causative. This deletion was not reported in the Database of Genomic Variants or in our departmental reference database of 800 healthy persons, but it was reported in the literature as associated with mental retardation and congenital malformations.<sup>24 25</sup> The smallest region of overlap in these three patients was 1 Mb and contained six

genes: *TBX2*, *TBX4*, *NACA2*, *BRIP1*, *INTS2* and *MED13* (figure 1A).

**Direct sequencing and MLPA of *TBX2* and *TBX4* in childhood-onset PAH patients**

No mutations were detected in *TBX2*. Three *TBX4* mutations (figure 1B) were identified in three unrelated patients with normal intelligence and without previously detected SPS features (patients 4–6; table 1). Two mutations were insertions causing a frameshift, leading to a premature stop codon, which are predicted to lead to a truncated protein, and one was a non-synonymous mutation (Tyr382Ser), which is predicted to affect the protein function (see online supplementary data appendix S2). These mutations were not present in 1000 control chromosomes in our departmental database.

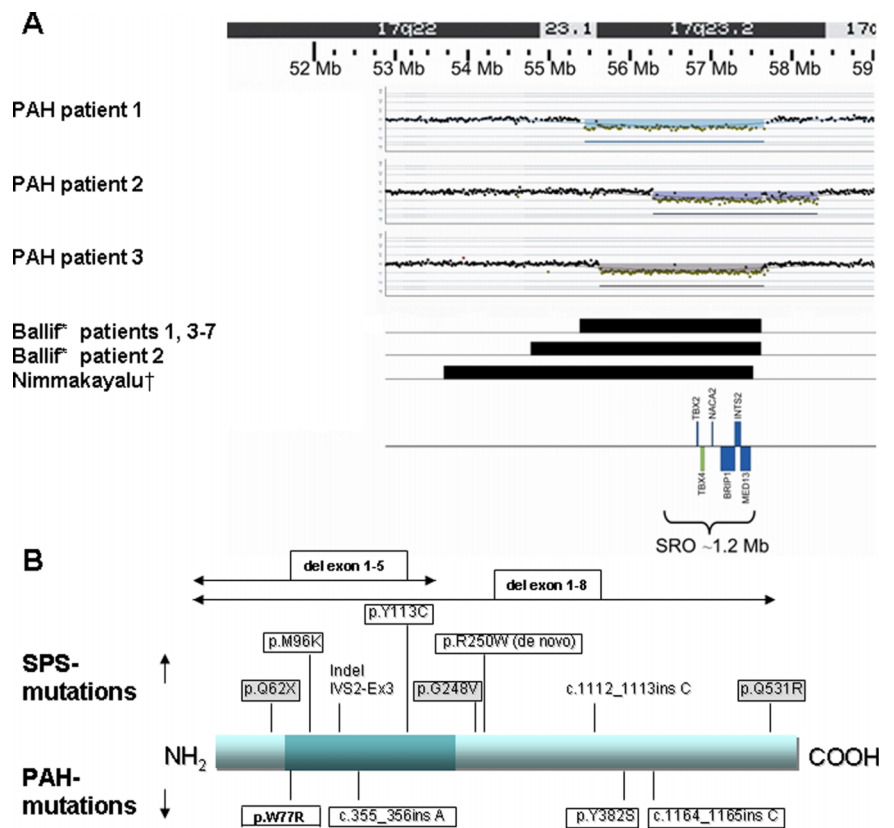
The parents of two of the three patients with a *TBX4* mutation were available for testing; the mutation in patient 4 was maternally derived, while that in patient 5 was paternally derived. None of the patients with a *TBX4* deletion/mutation also had a *BMPR2* mutation.

Results of aCGH and sequencing are summarised in table 1.

**Clinical evaluation of *TBX4* deletion and mutation carriers**

Since *TBX4* mutations are known to cause SPS, a clinical geneticist (WSK-F) physically examined the childhood-onset PAH patients with a *TBX4* mutation or deletion and their carrier parents for clinical and radiological features of SPS. In all the five patients still alive, and in the two carrier parents, skeletal malformations were found characteristic for SPS, including a history of patella luxation, a hypoplastic or absent patellae, a large gap between the first and second toes, and relatively long second and

**Figure 1** Position of deletions in 17q23.2 and mutations in *TBX4*. (A) Position of breakpoints in 17q23.2 deletions in three childhood-onset PAH patients compared with eight patients with 17q23.2 deletions reported in the literature. Childhood-onset PAH patient 1: 55.4–57.6 Mb; childhood-onset PAH patient 2: 56.7–58.7 Mb; childhood-onset PAH patient 3: 55.6–57.6 Mb; Ballif<sup>24</sup>: patients 1, 3–7: 55.4–57.6 Mb; Ballif<sup>24</sup>: patient 2: 54.8–57.6 Mb; Nimmakayalu<sup>25</sup>: one patient: 53.7–57.5 Mb; SRO, smallest region of overlap. (B) The *TBX4* protein, represented by a blue bar, with the dark part representing the T-box. The positions of *TBX4* mutations in three childhood-onset PAH patients (mutations in boxes) and one adult-onset patient (p.W77R) are depicted on the lower side of the protein bar. The positions of *TBX4* mutations in SPS patients from our SPS cohort (mutations in boxes, grey background if reported before in the literature), and from patients reported in the literature (no boxes) are depicted on the upper side of the protein bar.<sup>20</sup> The mutation R250W was detected de novo in two unrelated SPS patients.



third rays of the feet. There were also absent or irregular ossification of the ischiopubic junction of the pelvis, axe-cut notches in the acetabulum, and a broad neck of the talus (figure 2A,B). The SPS features had not been recognised earlier because this syndrome is rare, is not associated with mental retardation, and the skeletal findings are only recognised after a thorough examination and x-rays of the pelvis and lower limbs.

As for all 20 patients, these six SPS-PAH patients fulfilled the Dana Point criteria for PAH groups 1.1 (idiopathic) or 1.2 (hereditary). In one of our PAH patients with a *TBX4* mutation, post-mortem examination of lung tissue revealed features of PVOD. This observation is comparable with what is seen in patients with *BMP2* mutations who have also been reported with PVOD, and it confirms the similarities between the genetic backgrounds of PAH and PVOD suggested previously.<sup>26 27</sup>

#### *TBX4* mutation screening of 49 adult-onset PAH patients

In our cohort of adult-onset PAH patients, we detected one probably disease-causing mutation (c.229T>C, p.W77R), and one variant of uncertain significance (c.104C>T, p.A35V) in *TBX4* (see online supplementary data). Both patients are dead, and no symptoms of SPS had been recognised. Although both patients had PAH diagnosed in adulthood, an undetected, mildly progressive childhood onset of the disease in these patients cannot be ruled out retrospectively.

#### Echocardiographic screening of 23 SPS patients

Echocardiographic screening of 23 SPS patients (including the two carrier parents of patients 4 and 5) from 11 families, without clinical symptoms of PAH, revealed a tricuspid regurgitation velocity of 3.3 m/s ('PH possible') in a 57-year-old patient (not a parent of a childhood-onset PAH patient), that could not be explained by associated conditions. RHC revealed that she

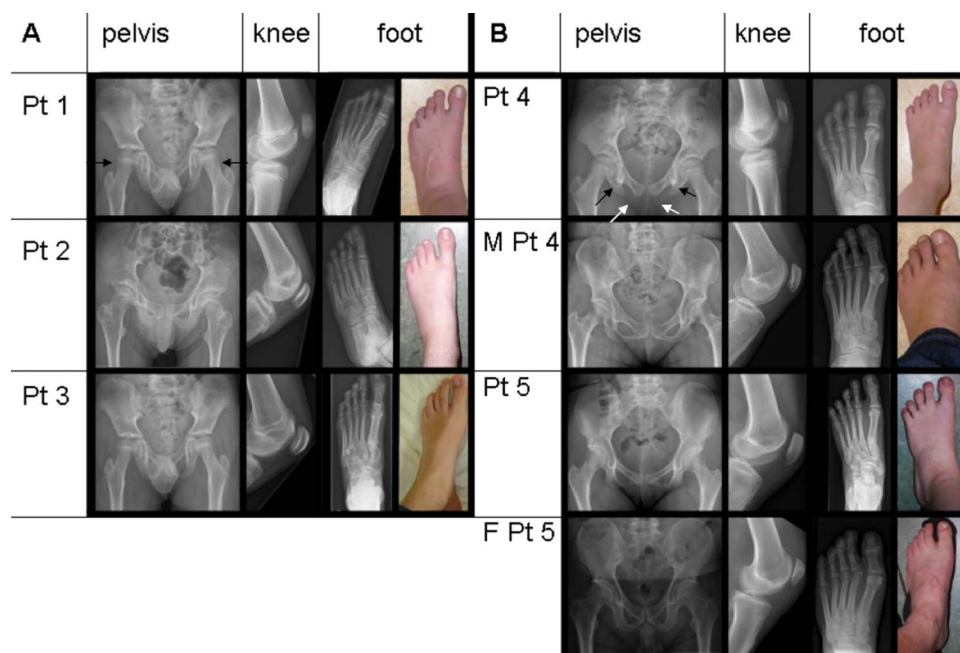
did not fulfil the criteria for PAH. In two patients, both older than 60 years of age, a tricuspid regurgitation velocity of 2.8 m/s and 3.1 m/s respectively ('PH possible') was attributed to chronic obstructive pulmonary disease (COPD) in one patient and left ventricular dysfunction in the other. Finally, in 20 patients, a tricuspid regurgitation velocity <2.8 m/s ('PH is unlikely') was measured.

#### DISCUSSION

In our cohort of patients with childhood-onset PAH, we detected a deletion of 17q23.2 harbouring the *TBX4* gene or a *TBX4* point mutation in 30% of the patients (6/20). Mutations in *TBX4* have been reported as the cause of SPS.<sup>20</sup> We detected features of SPS in all the living *TBX4* mutation carriers. As SPS is an autosomal dominant disease with an offspring recurrence risk of 50%, we consider that SPS families should be informed about this evident association with childhood-onset PAH.

Although our study is descriptive, and we have no functional data, the finding of deletions and mutations in 30% of a childhood-onset PAH cohort indicates an association and is unlikely to be a coincidence, since these deletions and mutations are not detected in healthy controls. The small size of the cohort of patients with childhood-onset PAH is a major limitation of our study, but is a direct consequence of the rarity of this disease.

The three PAH patients with 17q23.2 deletions had mild mental retardation, all in addition to PAH and SPS, possibly caused by haploinsufficiency of other genes in the deletion region. The three patients with point mutations in *TBX4* had normal intelligence. In this small patient series, we could not determine significant differences between PAH patients with or without *TBX4* mutations, with regard to age at PAH diagnosis (2.2–15.4 years vs 0.3–15.8 years), or pulmonary vascular



**Figure 2** Pelvic and lower limb malformations characteristic for small patella syndrome. Radiographs and photographs showing variable expression of pelvic and lower limb malformations associated with *TBX4* deletions (A) and mutations (B) in five childhood-onset PAH patients (patients 1–5) and in two mutation carrier parents (M, mother, F, father). Radiographs of the pelvis showing long femoral necks, especially in patient 1 (black arrows), axe-cut notches (black arrows in patient 4) and lack of or abnormal ossification of the ischio-pubic junction (unblackened arrows in patient 4) in all patients. x-rays of left knees showing small patellae, and x-rays and photographs of left feet, showing long toes in patient 3, and a large gap between digits I and II and relatively long second and third rays in all patients.



disease characteristics. Mortality (1/6 vs 6/14) appears lower in the *TBX4*-group, but the numbers are too small to draw any conclusions.

Microdeletions on chromosome 17q23.2, including the *TBX4* gene, have been reported previously, with patients having pelvic and lower limb malformations and PH.<sup>24 25</sup> However, there was no clear link between the loss of *TBX4* and PH in these patients. Our identification of mutations in the *TBX4* gene suggests that *TBX4* is a PAH-associated gene.

PAH has not been reported in human SPS patients previously, but the total number of reported SPS patients is low. We demonstrated that none of our 23 predominantly adult SPS patients with heterozygous *TBX4* mutations had PAH. These results indicate that the variable expressivity of SPS does not often include PAH in *TBX4* mutation carriers, similar to the low frequency of PAH in families with HHT caused by *ALK1* and *ENG* mutations. The low penetrance of PAH in *BMPR2* mutation carriers (20%) also indicates that PAH is not a purely monogenic disease.<sup>28 29</sup>

In our relatively small paediatric cohort, *TBX4* mutations were more frequent (6/20; 30%) than *BMPR2* mutations (3/20; 15%). In adult patients, this frequency appeared to be lower: *TBX4* mutations in 1/49 (2%) versus *BMPR2* mutations in 9/49 (18%). From these data, it is clear that PAH is a heterogeneous disease. It is unclear, however, why *TBX4* mutations are apparently less frequent in adult-onset PAH. One obvious reason could be that most *TBX4* mutation carriers do not survive till adulthood. However, the family histories of the SPS patients did not indicate unexplained deaths in childhood (data not shown). Different pathogenic mechanisms may indeed underlie PAH in adults and in children, as suggested previously.<sup>15</sup> A second potential explanation for the early onset of PAH in *TBX4* mutation carriers could be that *TBX4* is only expressed in embryonic and, maybe, childhood pulmonary vasculature, but not in aged pulmonary vasculature, but unfortunately, insufficient data on *TBX4* expression are available to confirm or reject this hypothesis. A third potential explanation could be that in *TBX4* mutation carriers, as in *BMPR2*, *ALK1* and *ENG* mutation carriers, unknown modifying factors play a role which ultimately trigger (or silence) the disease, and that these factors are age-specific.

*TBX4* belongs to the T-box gene family. Mutations in T-box genes have been found to be associated with several developmental disorders.<sup>30–34</sup> T-box genes are transcription factors involved in the establishment of cell-type-specific gene expression patterns, probably by epigenetic mechanisms through interaction with histone-modifying enzymes.<sup>35</sup> Epigenetic mechanisms are also believed to play a role in PAH.<sup>9 36</sup>

The expression of *Tbx4* is reported in zebrafish, chicken, mouse, dog and other animals.<sup>37–42</sup> During early mouse development *Tbx4* is expressed in the body wall, the genital papilla, the atrium of the heart, the limbs (predominantly the hindlimbs), in the mesenchym of the lung, mandible and trachea and in the tail mesoderm.<sup>37</sup>

Most animal studies focus on the role of *Tbx4* in limb development. *Tbx4* is reported to play a crucial role in lower limb development in both chickens and mice, and is reported to influence the activity of members of the FGF, BMP and Wnt pathways, which are known to be implicated in vertebrate limb outgrowth.<sup>37</sup> Ectopic *Tbx4* activation appears to initiate differentiation into legs and is, therefore, suggested to play a role in determining hindlimb identity.<sup>38 43 44</sup> Furthermore, an association with clubfeet has been reported in humans with *TBX4* containing microduplications.<sup>45</sup> However, clubfeet are not a feature of SPS. The precise mechanism leading to skeletal malformations in SPS patients with *TBX4* mutations has not yet been elucidated.<sup>20 46</sup>

In addition to expression in the limbs, *Tbx4* is also reported to be expressed at the position where the lung buds form in chicken, and to be expressed at high levels in the lung mesenchyme during organogenesis in the mouse.<sup>37 47 48</sup> Mouse models studying the development of the respiratory system indicate an important role for *Tbx4* and *Tbx5* in lung branching through interaction with *Fgf10*.<sup>49 50</sup> Decreased *Tbx4* activity leads to a decrease in foci expressing *Fgf10*, a known inducer of *Bmp4*. In normal lung development, *Fgf10* and *Bmp4* expression lead to activation of the BMP pathway.<sup>51</sup>

Although *Tbx4* governs multiple processes during respiratory tract development, its role in the development of pulmonary vasculature is insufficiently known. *Tbx4*-null mice are embryonic lethal due to allantois failure, and since PAH is a postnatal diagnosis, these studies do not allow conclusions regarding associated PAH in these animals. However, *Tbx4*-mutant embryos are reported to show failure of endothelial cells to form vessels in the allantois.<sup>43</sup>

Since it now appears that mutations in *BMPR2*, *ALK1*, *ENG* and *TBX4* are associated with PAH, there may be a common mechanism leading to PAH developing. *BMPR2*, *ALK1* and *ENG* are involved in the BMP/TGF- $\beta$ /SMAD signalling pathways. The balance between the BMP/TGF- $\beta$ /SMAD signalling pathways probably influences whether a cell type is directed more towards a differentiating or a proliferating state. In particular, the BMP pathway may promote differentiation, whereas the TGF- $\beta$  pathway may push the system towards a higher proliferation status. A disrupted balance between these two pathways, that is, towards a more proliferative state, may result in PAH.<sup>1</sup> A decreased activation of the BMP pathway through *FGF10* and *BMP4*, as reported in animal models focusing on lung and limb development, might link *TBX4* mutations in humans to the BMP/TGF- $\beta$ /SMAD signalling pathways involved in PAH.

More research is needed to elucidate modifying factors and downstream targets of *TBX4*, which could eventually lead to the development of novel therapeutic interventions.

## CONCLUSIONS AND RECOMMENDATIONS

We conclude that SPS is associated with childhood-onset PAH, since we detected whole-gene deletions and point mutations of *TBX4* in 6/20 patients (30%). In contrast with childhood-onset PAH, adult-onset patients showed a low frequency of *TBX4* mutations (2%). Signs of SPS should be carefully looked for and asked about in patients with PAH, especially in the young, and *TBX4* analysis and aCGH can be considered in patients with extrapulmonary features.

*TBX4* mutations appear to have a variable expressivity, which seems age-dependent, because 23 SPS patients (22 adults, one child) with *TBX4* mutations did not show PAH at screening. Nevertheless, in young patients with SPS, we feel screening for PAH should be considered.

*TBX4* mutations might contribute to PAH through a decreased activation of the BMP pathway. Future studies on the expression of *TBX4* and on the histopathology of lung vasculature in animal models or studies in inducible pluripotent stem cells may explain the mechanism underlying this association of *TBX4* mutations and childhood-onset PAH.

## Author affiliations

<sup>1</sup>Department of Genetics, University of Groningen, University Medical Center Groningen, Groningen, The Netherlands

<sup>2</sup>Department of Human Genetics, Institute for Genetic and Metabolic Disease, Radboud University Nijmegen Medical Centre, Nijmegen, The Netherlands

<sup>3</sup>Department of Pediatric Cardiology, National Referral Center for Pediatric Pulmonary Hypertension, Center for Congenital Heart Diseases, Beatrix Children's Hospital, University of Groningen, University Medical Centre Groningen, Groningen, The Netherlands

<sup>4</sup>Department of Genetics, VU Medical Center, Amsterdam, The Netherlands

<sup>5</sup>Department of Cardiology, Radboud University Nijmegen Medical Centre, Nijmegen, The Netherlands

<sup>6</sup>Department of Respiratory Medicine, VU Medical Center, Amsterdam, The Netherlands

<sup>7</sup>Department of Cardiology, Center for Congenital Heart Diseases University of Groningen, University Medical Center Groningen, Groningen, The Netherlands

**Acknowledgements** We thank Jackie Senior, of the Department of Genetics, University of Groningen, for editing the manuscript, Rianne Kinds, Lennart Johansson and Eddy de Boer of the Department of Genetics, University of Groningen for performing the sequencing, aCGH and MLPA and Pieter Neerinx of the Department of Genetics, University of Groningen for evaluating the control samples.

**Contributors** WSK-F, RMWH and RFMB conceived the study, WSK-F wrote the paper. WSK-F, EMHFB, MTRR, EML, JMD, AV/D, AV-N and ESH phenotyped the patients, KKD-B, LHH, JJP and BS-R performed and interpreted array CGH and sequencing of *BMPR2*, *TBX2* and *TBX4*. All authors read, revised and approved the final version of the manuscript.

**Competing interests** None.

**Patient consent** Obtained.

**Ethics approval** The clinical screening of 23 SPS patients for signs of PAH was approved for by the Regional Committee on Research Involving Human Subjects Nijmegen-Arnhem (0006-0119/2011/054). All further clinical data and DNA samples were obtained in the course of routine clinical care, no new patient samples were required.

**Provenance and peer review** Not commissioned; externally peer reviewed.

**Open Access** This is an Open Access article distributed in accordance with the Creative Commons Attribution Non Commercial (CC BY-NC 3.0) license, which permits others to distribute, remix, adapt, build upon this work non-commercially, and license their derivative works on different terms, provided the original work is properly cited and the use is non-commercial. See: <http://creativecommons.org/licenses/by-nc/3.0/>

## REFERENCES

- Archer SL, Weir EK, Wilkins MR. Basic science of pulmonary arterial hypertension for clinicians: new concepts and experimental therapies. *Circulation* 2010;121:2045–66.
- Simonneau G, Robbins IM, Beghetti M, Channick RN, Delcroix M, Denton CP, Elliott CG, Gaine SP, Gladwin MT, Jing ZC, Krowka MJ, Langleben D, Nakanishi N, Souza R. Updated clinical classification of pulmonary hypertension. *J Am Coll Cardiol* 2009;54:543–54.
- Lane KB, Machado RD, Pauciuolo MW, Thomson JR, Phillips JA III, Loyd JE, Nichols WC, Trembath RC. Heterozygous germline mutations in *BMPR2*, encoding a TGF-beta receptor, cause familial primary pulmonary hypertension. *Nat Genet* 2000;26:81–4.
- Trembath RC, Thomson JR, Machado RD, Morgan NV, Atkinson C, Winship I, Simonneau G, Galie N, Loyd JE, Humbert M, Nichols WC, Morrell NW, Berg J, Manes A, McGaughan J, Pauciuolo M, Wheeler L. Clinical and molecular genetic features of pulmonary hypertension in patients with hereditary hemorrhagic telangiectasia. *N Engl J Med* 2001;345:325–34.
- Trembath RC. Mutations in the TGF-beta type 1 receptor, *ALK1*, in combined primary pulmonary hypertension and hereditary haemorrhagic telangiectasia, implies pathway specificity. *J Heart Lung Transplant* 2001;20:175.
- Shintani M, Yagi H, Nakayama T, Saji T, Matsuoaka R. A new nonsense mutation of *SMAD8* associated with pulmonary arterial hypertension. *J Med Genet* 2009;46:331–7.
- Nasim MT, Ogo T, Ahmed M, Randall R, Chowdhury HM, Snape KM, Bradshaw TY, Southgate L, Lee GJ, Jackson I, Lord GM, Gibbs JS, Wilkins MR, Ohta-Ogo K, Nakamura K, Girerd B, Coulet F, Soubrier F, Humbert M, Morrell NW, Trembath RC, Machado RD. Molecular genetic characterization of *SMAD* signaling molecules in pulmonary arterial hypertension. *Hum Mutat* 2011;32:1385–9.
- Austin ED, Ma L, Leduc C, Berman Rosenzweig E, Borczuk A, Phillips JA III, Palomero T, Sumazin P, Kim HR, Talati MH, West J, Loyd JE, Chung WK. Whole Exome Sequencing to Identify a Novel Gene (*Caveolin-1*) Associated with Human Pulmonary Arterial Hypertension. *Circ Cardiovasc Genet* 2012;5:336–43.
- Archer SL, Marsboom G, Kim GH, Zhang HJ, Toth PT, Svensson EC, Dyck JR, Gombert-Maitland M, Thebaud B, Husain AN, Cipriani N, Rehman J. Epigenetic attenuation of mitochondrial superoxide dismutase 2 in pulmonary arterial hypertension: a basis for excessive cell proliferation and a new therapeutic target. *Circulation* 2010;121:2661–71.
- Rosenzweig EB, Morse JH, Knowles JA, Chada KK, Khan AM, Roberts KE, McElroy JJ, Juskiw NK, Mallory NC, Rich S, Diamond B, Barst RJ. Clinical implications of determining *BMPR2* mutation status in a large cohort of children and adults with pulmonary arterial hypertension. *J Heart Lung Transplant* 2008;27:668–74.
- Harrison RE, Berger R, Haworth SG, Tulloh R, Mache CJ, Morrell NW, Aldred MA, Trembath RC. Transforming growth factor-beta receptor mutations and pulmonary arterial hypertension in childhood. *Circulation* 2005;111:435–41.
- van Loon RL, Roofthoof MT, van Osch-Gevers M, Delhaas T, Strengers JL, Blom NA, Backx A, Berger RM. Clinical characterization of pediatric pulmonary hypertension: complex presentation and diagnosis. *J Pediatr* 2009;155:176–82.
- Aldred MA, Vijayakrishnan J, James V, Soubrier F, Gomez-Sanchez MA, Mattensson G, Galie N, Manes A, Corris P, Simonneau G, Humbert M, Morrell NW, Trembath RC. *BMPR2* gene rearrangements account for a significant proportion of mutations in familial and idiopathic pulmonary arterial hypertension. *Hum Mutat* 2006;27:212–13.
- Thomson JR, Machado RD, Pauciuolo MW, Morgan NV, Humbert M, Elliott GC, Ward K, Yacoub M, Mikhail G, Rogers P, Newman J, Wheeler L, Higenbottam T, Gibbs JS, Egan J, Crozier A, Peacock A, Allcock R, Corris P, Loyd JE, Trembath RC, Nichols WC. Sporadic primary pulmonary hypertension is associated with germline mutations of the gene encoding *BMPR-II*, a receptor member of the TGF-beta family. *J Med Genet* 2000;37:741–5.
- Grunig E, Koehler R, Miltenberger-Miltenyi G, Zimmermann R, Gorenflo M, Mereles D, Arnold K, Naust B, Wilkens H, Benz A, von Hippel A, Ulmer HE, Kubler W, Katus HA, Bartram CR, Schranz D, Janssen B. Primary pulmonary hypertension in children may have a different genetic background than in adults. *Pediatr Res* 2004;56:571–8.
- van Loon RL, Roofthoof MT, Hillege HL, Ten Harkel AD, van Osch-Gevers M, Delhaas T, Kapusta L, Strengers JL, Rammeloo L, Clur SA, Mulder BJ, Berger RM. Pediatric pulmonary hypertension in the Netherlands: epidemiology and characterization during the period 1991 to 2005. *Circulation* 2011;124:1755–64.
- Barst RJ, Ertel SI, Beghetti M, Ivy DD. Pulmonary arterial hypertension: a comparison between children and adults. *Eur Respir J* 2011;37:665–77.
- Berger RM, Beghetti M, Humpl T, Raskob GE, Ivy DD, Jing ZC, Bonnet D, Schulze-Neick I, Barst RJ. Clinical features of paediatric pulmonary hypertension: a registry study. *Lancet* 2012;379:537–46.
- Galie N, Hoeper MM, Humbert M, Torbicki A, Vachiery JL, Barbera JA, Beghetti M, Corris P, Gaine S, Gibbs JS, Gomez-Sanchez MA, Jondeau G, Klepetko W, Opitz C, Peacock A, Rubin L, Zellweger M, Simonneau G, Vahanian A, Auricchio A, Bax J, Ceconi C, Dean V, Filippatos G, Funck-Brentano C, Hobbs R, Kearney P, McDonagh T, McGregor K, Popescu BA, Reiner Z, Sechtem U, Sirtes PA, Tendera M, Vardas P, Widimsky P, Sechtem U, Al AN, Andreotti F, Aschermann M, Asteggiano R, Benza R, Berger R, Bonnet D, Delcroix M, Howard L, Kitsiou AN, Lang I, Maggioni A, Nielsen-Kudsk JE, Park M, Perrone-Filardi P, Price S, Domenech MT, Vonk-Noordegraaf A, Zamorano JL. Guidelines for the diagnosis and treatment of pulmonary hypertension: The Task Force for the Diagnosis and Treatment of Pulmonary Hypertension of the European Society of Cardiology (ESC) and the European Respiratory Society (ERS), endorsed by the International Society of Heart and Lung Transplantation (ISHLT). *Eur Heart J* 2009;30:2493–537.
- Bongers EM, Duijff PH, van Beersum SE, Schoots J, van KA, Burckhardt A, Hamel BC, Losan F, Hoefsloot LH, Yntema HG, Knoers NV, van BH. Mutations in the human *TBX4* gene cause small patella syndrome. *Am J Hum Genet* 2004;74:1239–48.
- Mandel EM, Kaltenbrun E, Callis TE, Zeng XX, Marques SR, Yelon D, Wang DZ, Conlon FL. The BMP pathway acts to directly regulate *Tbx20* in the developing heart. *Development* 2010;137:1919–29.
- Stennard FA, Harvey RP. T-box transcription factors and their roles in regulatory hierarchies in the developing heart. *Development* 2005;132:4897–910.
- Hoogaars WM, Barnett P, Moorman AF, Christoffels VM. T-box factors determine cardiac design. *Cell Mol Life Sci* 2007;64:646–60.
- Ballif BC, Theisen A, Rosenfeld JA, Traylor RN, Gastier-Foster J, Thrush DL, Astbury C, Bartholomew D, McBride KL, Pyatt RE, Shane K, Smith WE, Banks V, Gallentine WB, Brock P, Rudd MK, Adam MP, Keene JA, Phillips JA III, Pfotenhauser JP, Gowans GC, Stankiewicz P, Bejjani BA, Shaffer LG. Identification of a recurrent microdeletion at 17q23.1q23.2 flanked by segmental duplications associated with heart defects and limb abnormalities. *Am J Hum Genet* 2010;86:454–61.
- Nimmakayalu M, Major H, Sheffield V, Solomon DH, Smith RJ, Patil SR, Shchelochkov OA. Microdeletion of 17q22q23.2 encompassing *TBX2* and *TBX4* in a patient with congenital microcephaly, thyroid duct cyst, sensorineural hearing loss, and pulmonary hypertension. *Am J Med Genet A* 2011;155A:418–23.
- Runo JR, Loyd JE. Primary pulmonary hypertension. *Lancet* 2003;361:1533–44.
- Montani D, Jais X, Price LC, Achouh L, Depiano B, Mercier O, Mussot S, Fadel E, Dartevielle P, Sitbon O, Simonneau G, Humbert M. Cautious epoprostenol therapy is a safe bridge to lung transplantation in pulmonary veno-occlusive disease. *Eur Respir J* 2009;34:1348–56.
- Newman JH, Phillips JA III, Loyd JE. Narrative review: the enigma of pulmonary arterial hypertension: new insights from genetic studies. *Ann Intern Med* 2008;148:278–83.

- 29 Girerd B, Montani D, Coulet F, Szyrmf B, Yaici A, Jais X, Tregouet D, Reis A, Drouin-Garraud V, Fraisse A, Sitbon O, O'Callaghan DS, Simonneau G, Soubrier F, Humbert M. Clinical outcomes of pulmonary arterial hypertension in patients carrying an ACVRL1 (ALK1) mutation. *Am J Respir Crit Care Med* 2010;181:851–61.
- 30 Kirk EP, Sunde M, Costa MW, Rankin SA, Wolstein O, Castro ML, Butler TL, Hyun C, Guo G, Otway R, Mackay JP, Waddell LB, Cole AD, Hayward C, Keogh A, Macdonald P, Griffiths L, Fatkin D, Sholler GF, Zorn AM, Feneley MP, Winlaw DS, Harvey RP. Mutations in cardiac T-box factor gene TBX20 are associated with diverse cardiac pathologies, including defects of septation and valvulogenesis and cardiomyopathy. *Am J Hum Genet* 2007;81:280–91.
- 31 Yagi H, Furutani Y, Hamada H, Sasaki T, Asakawa S, Minoshima S, Ichida F, Joo K, Kimura M, Imamura S, Kamatani N, Momma K, Takao A, Nakazawa M, Shimizu N, Matsuoka R. Role of TBX1 in human del22q11.2 syndrome. *Lancet* 2003;362:1366–73.
- 32 Bamshad M, Lin RC, Law DJ, Watkins WC, Krakowiak PA, Moore ME, Franceschini P, Lala R, Holmes LB, Gebuhr TC, Bruneau BG, Schinzel A, Seidman JG, Seidman CE, Jorde LB. Mutations in human TBX3 alter limb, apocrine and genital development in ulnar-mammary syndrome. *Nat Genet* 1997;16:311–15.
- 33 Basson CT, Bachinsky DR, Lin RC, Levi T, Elkins JA, Soultz J, Grayzel D, Kroumpouzou E, Traill TA, Leblanc-Straceski J, Renault B, Kucherlapati R, Seidman JG, Seidman CE. Mutations in human TBX5 [corrected] cause limb and cardiac malformation in Holt-Oram syndrome. *Nat Genet* 1997;15:30–5.
- 34 Packham EA, Brook JD. T-box genes in human disorders. *Hum Mol Genet* 2003;12 (Spec no 1):R37–44.
- 35 Miller SA, Weinmann AS. An essential interaction between T-box proteins and histone-modifying enzymes. *Epigenetics* 2009;4:85–8.
- 36 Kim GH, Ryan JJ, Marsboom G, Archer SL. Epigenetic mechanisms of pulmonary hypertension. *Pulm Circ* 2011;1:347–56.
- 37 Chapman DL, Garvey N, Hancock S, Alexiou M, Agulnik SI, Gibson-Brown JJ, Cebra-Thomas J, Bollag RJ, Silver LM, Papaioannou VE. Expression of the T-box family genes, Tbx1-Tbx5, during early mouse development. *Dev Dyn* 1996;206:379–90.
- 38 Rodriguez-Esteban C, Tsukui T, Yonei S, Magallon J, Tamura K, Izpisua Belmonte JC. The T-box genes Tbx4 and Tbx5 regulate limb outgrowth and identity. *Nature* 1999;398:814–8.
- 39 Ruvinsky I, Oates AC, Silver LM, Ho RK. The evolution of paired appendages in vertebrates: T-box genes in the zebrafish. *Dev Genes Evol* 2000;210:82–91.
- 40 Tanaka M, Munsterberg A, Anderson WG, Prescott AR, Hazon N, Tickle C. Fin development in a cartilaginous fish and the origin of vertebrate limbs. *Nature* 2002;416:527–31.
- 41 Onbe K, Nishida S, Sone E, Kanda N, Goto M, Pastene LA, Tanabe S, Koike H. Sequence variation in the Tbx4 gene in marine mammals. *Zool Sci* 2007;24:449–64.
- 42 Andelfinger G, Etter L, Dyment M, Hitte C, Galibert F, Kirkness E, Benson DW. Radiation hybrid mapping and genomic organization of canine TBX2 and TBX4. *Anim Genet* 2003;34:307–9.
- 43 Naiche LA, Papaioannou VE. Loss of Tbx4 blocks hindlimb development and affects vascularization and fusion of the allantois. *Development* 2003;130:2681–93.
- 44 Takeuchi JK, Koshihara-Takeuchi K, Suzuki T, Kamimura M, Ogura K, Ogura T. Tbx5 and Tbx4 trigger limb initiation through activation of the Wnt/Fgf signaling cascade. *Development* 2003;130:2729–39.
- 45 Alvarado DM, Aferol H, McCall K, Huang JB, Teych M, Buchan J, Cady J, Gonzales PR, Dobbs MB, Gurnett CA. Familial isolated clubfoot is associated with recurrent chromosome 17q23.1q23.2 microduplications containing TBX4. *Am J Hum Genet* 2010;87:154–60.
- 46 Bongers EM, van KA, van BH, Knoers NV. Human syndromes with congenital patellar anomalies and the underlying gene defects. *Clin Genet* 2005;68:302–19.
- 47 Sakiyama J, Yamagishi A, Kuroiwa A. Tbx4-Fgf10 system controls lung bud formation during chicken embryonic development. *Development* 2003;130:1225–34.
- 48 Sekine K, Ohuchi H, Fujiwara M, Yamasaki M, Yoshizawa T, Sato T, Yagishita N, Matsui D, Koga Y, Itoh N, Kato S. Fgf10 is essential for limb and lung formation. *Nat Genet* 1999;21:138–41.
- 49 Cebra-Thomas JA, Bromer J, Gardner R, Lam GK, Sheipe H, Gilbert SF. T-box gene products are required for mesenchymal induction of epithelial branching in the embryonic mouse lung. *Dev Dyn* 2003;226:82–90.
- 50 Arora R, Metzger RJ, Papaioannou VE. Multiple roles and interactions of Tbx4 and Tbx5 in development of the respiratory system. *PLoS Genet* 2012;8:e1002866.
- 51 Sountoulidis A, Stavropoulos A, Giaglis S, Apostolou E, Monteiro R, Chuva de Sousa Lopes SM, Chen H, Stripp BR, Mummery C, Andreacos E, Sideras P. Activation of the canonical Bone Morphogenetic Protein (BMP) pathway during lung morphogenesis and adult lung tissue repair. *PLoS ONE* 2012;7:e41460.

## Appendix 1

### Supplementary data to manuscript “TBX4 mutations (Small Patella Syndrome) are associated with childhood-onset Pulmonary Arterial Hypertension ”

by Kerstjens-Frederikse W.S. et al.

#### Genetic analysis

##### *aCGH analysis*

Array-comparative genomic hybridization (aCGH) analysis was performed using the 180K oligo array from Agilent (custom design ID: 23363; Agilent Technologies Inc., Santa Clara, CA, USA). A mixture of 40 healthy male or 40 female DNA samples was used as reference (sex-matched). Procedures were performed according to the manufacturer’s protocol. Data were extracted using Feature Extraction V.9.1 software.

##### *Mutation analysis of TBX2 and TBX4*

Mutation analysis of all coding exons and flanking intronic sequences of the *TBX4* gene was carried out using flanking intronic primers (primer sequences are available upon request). The forward primer was designed with a PT1 tail (5’-TGTAACGACGGCCAGT-3’) and the reverse primer was designed with a PT2 tail (5’-CAGGAAACAGCTATGACC-3’). PCR was performed in a total volume of 15 µl containing 10 µl AmpliTag Gold ®Fast PCR Master Mix (Applied Biosystems), 1.5 pmol/µl of each primer (Eurogentec, Serian, Belgium) and 2 µl genomic DNA. The samples were PCR amplified on a Perkin-Elmer (ABI) Geneamp 9700 using the following PCR program: an initial denaturation at 94°C for 1 minute, followed by 5 cycles of denaturation at 94°C for 5 seconds, annealing starting at 65°C for 30 seconds with a stepdown of 1°C every cycle, and elongation at 72°C for 1 minute, followed by 20 cycles of denaturation at 94°C for 5 seconds, annealing at 60°C for 30 seconds, and elongation at 72°C for 1 minute, followed by another 15 cycles of denaturation at 94°C for 5 seconds, annealing at 55°C for 30 seconds, and elongation at 72°C for 1 minute with a final step at 72°C for 5 minutes, after which the samples were cooled down to 20°C. 5 µl of the PCR products were loaded with 5 µl loading buffer and run on a 2% agarose gel with a FastRuler Low Range DNA Ladder (Fermentas) for comparison. The remainders of all PCR products were purified with ExoSAP-IT (Amersham Pharmacia Biotech, Biscataway, NY, USA) and subjected to direct sequencing on an ABI 3730 automated sequencer, using PT1 and PT2 primers.

##### *MLPA deletion screening of TBX2 and TBX4*

For both genes, two uniquely sized probes were developed in accordance with a protocol provided by MRC Holland, The Netherlands). Ten probes were combined in one MLPA assay together with a quantity of DNA and a DNA denaturation control mix (EK-1 kit, MRC Holland). The procedure was further carried out as described by De Vries BB, Pfundt R, Leisink M et al. Diagnostic genome profiling in mental retardation. *Am J Hum Genet* 2005; 77(4):606-616.



## Appendix 2

### Supplementary data to manuscript

**“TBX4 mutations (Small Patella Syndrome) are associated with childhood-onset Pulmonary Arterial Hypertension ”** by Kerstjens-Frederikse W.S. et al.

### Prediction of pathogenicity of missense mutations in *TBX4*

#### 1. childhood onset PAH patients

Patient 6: c.1145A>C; p.Y382S

Highly conserved nucleotide (score 1.0, [0-1]), highly conserved amino acid (considering 11 species); Grantham distance 144; Polyphen score 0,531 (possibly damaging); SIFT score 0,00 (not tolerated). Mutation is not detected in 1000 control chromosomes. Conclusion: pathogenic

#### 2. adult onset PAH patients:

Patient A1: c.229T>C, p.W77R highly conserved nucleotide (score 1.0, [0-1]); highly conserved amino acid (considering 11 species); Grantham distance 101; Polyphen score 1,00 (probably damaging); SIFT score 0,00 (not tolerated). Mutation is not detected in 1000 control chromosomes. Conclusion: probably disease causing.

Patient A2: c.104C>T, p.A35V: weakly conserved nucleotide (score 0.31, [0-1]); moderately conserved amino acid (considering 11 species); Grantham distance 64; Polyphen score 0,480 (possibly damaging); SIFT score 0,02 (not tolerated). The mutation is not detected in 1000 control chromosomes. Conclusion: unclassified variant

-SIFT algorithm (Sorting Intolerant From Tolerant) is available at <http://sift.jcvi.org>

-Polyphen-2 (Polymorphism Phenotyping program version 2 is available at <http://genetics.bwh.harvard.edu/pph/>