

Contents

Immune genetics

- 349** Inheritance of autoinflammatory diseases: shifting paradigms and nomenclature
I Touitou

Cancer genetics

- 360** Evaluating the performance of the breast cancer genetic risk models BOADICEA, IBIS, BRCAPRO and Claus for predicting *BRCA1/2* mutation carrier probabilities: a study based on 7352 families from the German Hereditary Breast and Ovarian Cancer Consortium
C Fischer, K Kuchenbäcker, C Engel, S Zachariae, K Rhiem, A Meindl, N Rahner, N Dikow, H Plendl, I Debatin, T Grimm, D Gadzicki, R Flöttmann, J Horvath, E Schröck, F Stock, D Schäfer, I Schwaab, C Kartsonaki, N Mavaddat, B Schlegelberger, A C Antoniou, R Schmutzler, on behalf of the German Consortium for Hereditary Breast and Ovarian Cancer
- 368** Ovarian cancer among 8005 women from a breast cancer family history clinic: no increased risk of invasive ovarian cancer in families testing negative for *BRCA1* and *BRCA2*
S L Ingham, J Warwick, I Buchan, S Sahin, C O'Hara, A Moran, A Howell, D G Evans
- 373** Risk of thyroid cancer in first-degree relatives of patients with non-medullary thyroid cancer by histology type and age at diagnosis: a joint study from five Nordic countries
M Fallah, E Pukkala, L Tryggvadottir, J H Olsen, S Tretli, K Sundquist, K Hemminki

Therapeutics

- 383** Troponin activator augments muscle force in nemaline myopathy patients with nebulin mutations
J M de Winter, D Buck, C Hidalgo, J R Jasper, F I Malik, N F Clarke, G J M Stienen, M W Lawlor, A H Beggs, C A C Ottenheijm, H Granzier

Clinical guidelines

- 393** Impact of direct-to-consumer genomic testing at long term follow-up
C S Bloss, N E Wineinger, B F Darst, N J Schork, E J Topol

Genotype-phenotype correlations

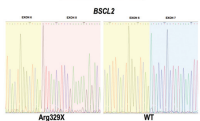
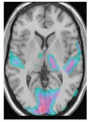
- 401** A new seipin-associated neurodegenerative syndrome
E Guillén-Navarro, S Sánchez-Iglesias, R Domingo-Jiménez, B Victoria, A Ruiz-Riquelme, A Rábano, L Loidi, A Beiras, B González-Méndez, A Ramos, V López-González, M J Ballesta-Martínez, M Garrido-Pumar, P Aguiar, A Ruibal, J R Requena, D Araújo-Vilar

Genome-wide studies

- 410** Identification of chromosome 3q28 and *ALPK1* as susceptibility loci for chronic kidney disease in Japanese individuals by a genome-wide association study
Y Yamada, T Nishida, S Ichihara, K Kato, T Fujimaki, M Oguri, H Horibe, T Yoshida, S Watanabe, K Satoh, Y Aoyagi, M Fukuda, M Sawabe

June 2013 Volume 50 Issue 6

JMG
Journal of Medical Genetics



BMJ

jmg.bmj.com

Cover credit: A new seipin-associated neurodegenerative syndrome from Guillén-Navarro *et al* in this issue. (page 401)

Receive regular table of contents by email. Register using this QR code.



This article has been chosen by the Editor to be of special interest or importance and is freely available online.



This article has been made freely available online under the BMJ Journals Open Access scheme. See <http://jmg.bmj.com/site/about/guidelines.xhtml#open>

C O P E COMMITTEE ON PUBLICATION ETHICS

This journal is a member of and subscribes to the principles of the Committee on Publication Ethics
www.publicationethics.org.uk

equator
network

recycle

When you have finished with this please recycle it