



OPEN ACCESS

Open Access
Scan to access more
free content

► Additional material is published online only. To view please visit the journal online (<http://dx.doi.org/10.1136/jmedgenet-2012-101442>).

For numbered affiliations see end of article.

Correspondence to

Dr Indra Rani Gupta, Department of Pediatrics, Division of Nephrology, Montreal Children's Hospital and McGill University, 2300, rue Tupper—E222, Montreal, Quebec, Canada H3H 1P3; indra.gupta@muhc.mcgill.ca; Dr Tomoko Takano, Division of Nephrology, McGill University Health Centre, 3775 University Street, Room 236, Montreal, Quebec, Canada H3H 1P3; tomoko.takano@mcgill.ca

CB, DA, KCH, JEA and SF contributed equally.

Received 22 November 2012
Revised 24 January 2013
Accepted 31 January 2013
Published Online First
22 February 2013

To cite: Gupta IR, Baldwin C, Auguste D, et al. *J Med Genet* 2013;**50**:330–338.

ORIGINAL ARTICLE

ARHGDI1: a novel gene implicated in nephrotic syndrome

Indra Rani Gupta,^{1,2,3} Cindy Baldwin,⁴ David Auguste,^{4,5} Kevin C H Ha,^{3,6} Jasmine El Andaloussi,² Somayyeh Fahiminiya,^{3,6} Martin Bitzan,^{1,2} Chantal Bernard,⁷ Mohammad Reza Akbari,^{8,9} Steven A Narod,^{8,9} David S Rosenblatt,^{1,3,4} Jacek Majewski,^{3,6} Tomoko Takano^{2,4,5}

ABSTRACT

Background Congenital nephrotic syndrome arises from a defect in the glomerular filtration barrier that permits the unrestricted passage of protein across the barrier, resulting in proteinuria, hypoalbuminaemia, and severe oedema. While most cases are due to mutations in one of five genes, in up to 15% of cases, a genetic cause is not identified. We investigated two sisters with a presumed recessive form of congenital nephrotic syndrome.

Methods and results Whole exome sequencing identified five genes with diallelic mutations that were shared by the sisters, and Sanger sequencing revealed that *ARHGDI1* that encodes Rho GDP (guanosine diphosphate) dissociation inhibitor α (RhoGDI α , OMIM 601925) was the most likely candidate. Mice with targeted inactivation of *ARHGDI1* are known to develop severe proteinuria and nephrotic syndrome, therefore this gene was pursued in functional studies. The sisters harbour a homozygous in-frame deletion that is predicted to remove a highly conserved aspartic acid residue within the interface where the protein, RhoGDI α , interacts with the Rho family of small GTPases (c.553_555del(p.Asp185del)). Rho-GTPases are critical regulators of the actin cytoskeleton and when bound to RhoGDI α , they are sequestered in an inactive, cytosolic pool. In the mouse kidney, RhoGDI α was highly expressed in podocytes, a critical cell within the glomerular filtration barrier. When transfected in HEK293T cells, the mutant RhoGDI α was unable to bind to the Rho-GTPases, RhoA, Rac1, and Cdc42, unlike the wild-type construct. When RhoGDI α was knocked down in podocytes, RhoA, Rac1, and Cdc42 were hyperactivated and podocyte motility was impaired. The proband's fibroblasts demonstrated mislocalisation of RhoGDI α to the nucleus, hyperactivation of the three Rho-GTPases, and impaired cell motility, suggesting that the in-frame deletion leads to a loss of function.

Conclusions Mutations in *ARHGDI1* need to be considered in the aetiology of heritable forms of nephrotic syndrome.

INTRODUCTION

Congenital nephrotic syndrome is a rare kidney disorder characterised by the presence of massive proteinuria, hypoalbuminaemia, and generalised oedema in the first 3 months of life. It arises from a defect in the glomerular filtration barrier that permits the unrestricted passage of protein across

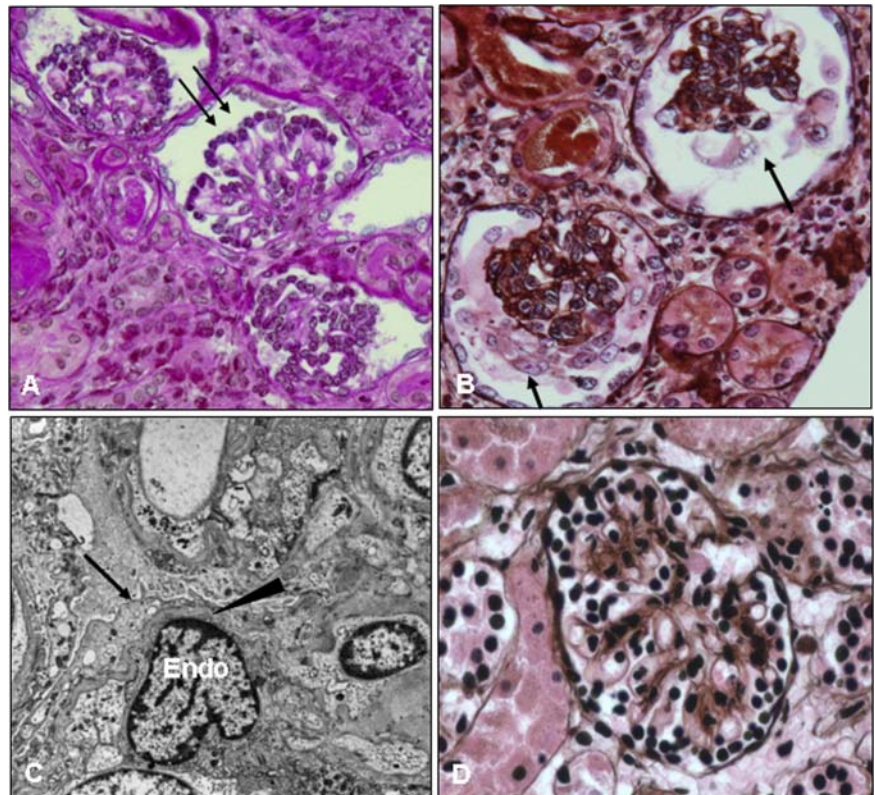
the barrier into the urine. The glomerular filtration barrier consists of fenestrated endothelial cells, the acellular glomerular basement membrane that is about 300 nm thick, and specialised epithelial cells called podocytes. The majority of children with congenital nephrotic syndrome have a monogenic basis for their disease due to mutations in genes that affect the structure and function of the actin cytoskeleton within podocytes.¹ In a large survey, ~85% of cases of congenital nephrotic syndrome were attributed to mutations in *NPHS1* (nephrin), *NPHS2* (podocin), *LAMB2* (laminin β 2), or *WT1* (Wilms tumour suppressor 1), while the remaining 15% were genetically uncharacterised.¹ Subsequent to this report, mutations in *PLCE1* (phospholipase C ϵ) were also identified in cases of congenital nephrotic syndrome, more frequently in the presence of a renal biopsy showing diffuse mesangial sclerosis.^{2–3} Establishing a genetic diagnosis has important implications for the treatment of congenital nephrotic syndrome; most of the heritable forms do not respond to immunosuppressive therapy, leaving bilateral nephrectomy followed by dialysis and transplantation as the only therapeutic option.⁴

We report two sisters with congenital nephrotic syndrome who were born to consanguineous parents of Pakistani origin. Since no coding mutations were identified in the five aforementioned genes, we hypothesised that the girls had a novel recessive form of congenital nephrotic syndrome. Using whole exome sequencing, we discovered that both girls have an in-frame deletion in *ARHGDI1* that encodes the protein known as Rho GDP (guanosine diphosphate) dissociation inhibitor α (RhoGDI α , OMIM 601925).

CASE HISTORY

The proband presented at 3 weeks of age with generalised oedema and was found to have severe hypoalbuminaemia and proteinuria and was diagnosed with congenital nephrotic syndrome. The family history revealed that the parents were Pakistani in origin and consanguineous. A renal biopsy was performed at 1 month of age and this showed severe glomerular changes consistent with diffuse mesangial sclerosis (figure 1A–D). The patient rapidly deteriorated and developed end stage renal failure at 3 months of age that was treated by haemodialysis. She received a cadaveric

Figure 1 Kidney biopsy of the proband at the age of 1 month. Kidney tissue was processed and stained with periodic acid Schiff (PAS) (A) and PAS methenamine (PASM) silver (B, D) for light microscopy or for electron microscopy (C). The patient's glomeruli are notably abnormal; they are small for her age and show hypercellularity, increased extracellular matrix, and contracted/collapsed glomerular tufts that are surrounded by cuboidal/immature podocytes (A, arrows) or by vacuolated/hypertrophic podocytes (B, arrows). These changes are consistent with diffuse mesangial sclerosis. A normal glomerulus from an age matched infant is shown for comparison (D). Electron micrograph images from the patient's kidney biopsy (C) show diffuse foot process effacement (arrow), thinning of the glomerular basement membrane (arrowhead), and swollen endothelial cells (Endo). This figure is only reproduced in colour in the online version.



renal transplant at the age of 2 years, but the graft never functioned due to venous thrombosis in the transplant, and so the patient remains on dialysis. The second child was diagnosed with congenital nephrotic syndrome on day 16 of life when her laboratory studies revealed severe hypoalbuminaemia with proteinuria (figure 2A). The mother requested no further treatment for this baby who subsequently died at the age of 2 months.

METHODS

Ethics approval

Sequencing analyses, human fibroblast cultures and experiments were approved by the Research Ethics Board of the Montreal Children's Hospital/McGill University Health Center. Parental written informed consent was obtained for the outlined studies.

Whole exome sequencing analysis

A total of 3 µg of genomic DNA from each affected sister was used for whole exome sequencing. The DNA of patient 1, the proband, was subjected to the Agilent Sure-Select Human All Exon V2 Kit (Santa Clara, California, USA) which targets approximately 44 Mb of the human exome defined by the National Center for Biotechnology Information (NCBI) consensus coding sequence database (CCDS, version September 2008) and additional RefSeq sequences (CCDS version September 2009). The captured exons were sequenced using two different platforms: Illumina GAIx (San Diego, California, USA) and Illumina HiSeq2000, generating approximately 38 M (76 bp length) and 84 M (50 bp length) single-end reads, respectively. The whole exome of patient 2 was captured using the Illumina TruSeq Exome Enrichment Kit (San Diego, California, USA), which targets 62 Mb of exonic sequences including 5'UTR, 3'UTR, microRNA and other non-coding RNAs and was subsequently sequenced by Illumina HiSeq2000, producing 34 M paired-end reads with 100 bp lengths.

The bioinformatics analysis of exome sequencing data was carried out as previously described.^{5 6} Briefly, high quality trimmed reads were aligned to the human reference genome (hg19 assembly) by Burrows-Wheeler Aligner (V0.5.9),⁷ producing a coverage at $>5\times$ read depth for 86% and 82% of exomes in patient 1 and patient 2, respectively.

Variants were determined using SAMtools V0.1.7, mpileup and varFilter.⁸ For each called position, a minimum of two variant reads and $>20\%$ single nucleotide variants or $>15\%$ indels (small insertions or deletions) variant reads were considered. Common polymorphisms and systematic false positives were removed by filtering the variants against our in-house exome database, containing more than 500 individuals. Functional annotation of the remaining variants, those previously seen in less than five individuals in our in-house exome database, was carried out using ANNOVAR,⁹ which cross-references variants against public databases (dbSNP132 and the 1000 Genomes project) and annotates them according to the type of mutations (intronic, exonic, untranslated region (UTR), etc) and the score of SIFT, PolyPhen-2 and PHASTCONS tools.^{10 11} Novel variants had an allele frequency $<0.5\%$ in the 1000 Genomes dataset and were predicted to be non-synonymous (ie, missense, nonsense, frameshift, or canonical splice site changes). Candidate genes having homozygous or two potentially compound heterozygous variants were considered for further study and were manually examined using the Integrative Genomics Viewer (IGV).¹²

Sanger sequencing analysis

Exon 6 of *ARHGDI1* was amplified from gDNA in 96 ethnically matched controls using the following primers ARHGDI1E06F: AAGGCGTCAAGAGTGAGTGG and ARHGDI1E06R: GGGA CACATCCGCCTGTC based on the GenBank ref seq no. NM_001185077.1.

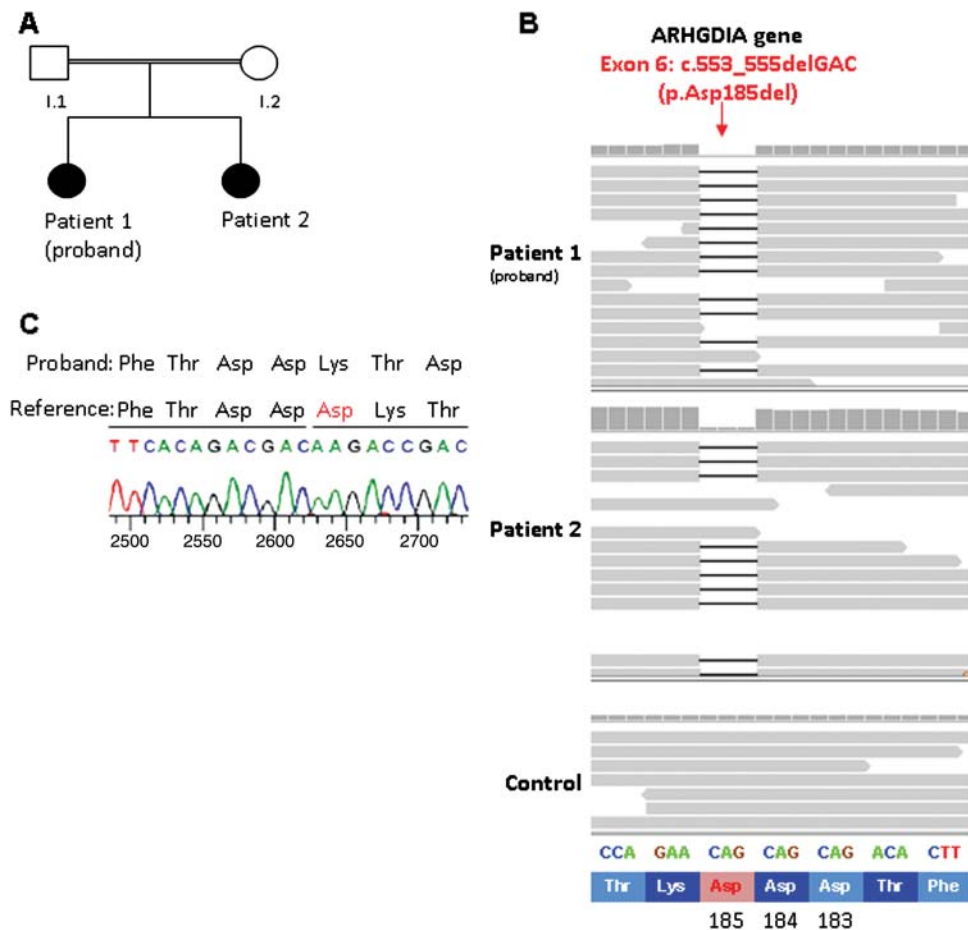


Figure 2 Family pedigree and sequencing results. (A) The parents are first cousins and have two affected daughters. (B) Whole exome sequencing results reveal the in-frame deletion in *ARGHDIA* in the proband and her sister, patient 2. (C) Sequencing results from the proband are shown and demonstrate that the homozygous deletion encodes one of the three consecutive aspartic acid residues (183–185) of RhoGDI α . It is not possible to determine which of the three residues is deleted and we call this mutation (c.553_555del(p.Asp185del), Δ D185). The three aspartic acid (183–185) residues are highly conserved in vertebrates. This figure is only reproduced in colour in the online version.

Cell lines

A skin biopsy was performed on the proband to obtain fibroblasts for culture as described.¹³ Two fibroblast lines from paediatric patients without nephrotic syndrome were used as controls, MCH058 and MCH065, respectively and were obtained from the Canadian Repository for Mutant Human Cell Strains, Montreal Children's Hospital, Montreal, Quebec, Canada. All fibroblasts were maintained in α minimal essential media (α MEM) supplemented with 10% fetal bovine serum (FBS) and were serum-starved (0.5% FBS) overnight before experiments. All cell lines used were between passage 2–12. Immortalised mouse podocytes were kindly provided by Dr Shankland (University of Washington)¹⁴ and were differentiated for at least 9 days and serum-starved overnight for experiments.

Antibodies

Rabbit anti-RhoGDI α (sc-360), mouse anti-GFP (sc-9996), and rabbit anti-Myc (sc-789) were from Santa Cruz (Santa Cruz, California, USA); mouse anti-synaptopodin was from Progen Biotechnik (Heidelberg, Germany), mouse anti-RhoA, mouse anti-Rac1, and mouse anti-Cdc42 were from Upstate Biotechnologies (Lake Placid, New York, USA); rabbit anti- α -tubulin was from Abcam (Cambridge, Massachusetts, USA); Alexa Fluor 568-phalloidin was from Sigma-Aldrich (Mississauga, Ontario, Canada); 4',6-diamidino-2-phenylindole (DAPI) was from Invitrogen (Burlington, Ontario, Canada);

Alexa Fluor 488 anti-rabbit IgG was from Molecular Probes (Eugene, Oregon, USA); and Alexa Fluor 555 anti-mouse IgG was from Invitrogen (Burlington, Ontario, Canada).

Immunohistochemistry of the kidney

Kidneys from outbred adult CD1 mice were used for immunohistochemistry experiments. Kidneys were fixed in 100% methanol for 1 h at -20°C and then paraffin embedded and sectioned at 4 μm thickness. Sections were treated with citrate for antigen retrieval and stained with RhoGDI α antibody (1 : 50) and Alexa Fluor 488 anti-rabbit IgG (1 : 100). Co-staining was performed using the synaptopodin antibody (1 : 50) and Alexa Fluor 555 anti-mouse IgG (1 : 500). Photographs were taken using a Zeiss Axiophot microscope.

Plasmids

The coding sequence of human RhoGDI α was obtained by reverse transcriptase PCR (RT-PCR) using RNA from HEK293T cells and cloned into pEGFP-C1 (Clontech) using Bgl II and Hind III. The Δ D185 mutation was introduced by PCR based mutagenesis. Final sequences were confirmed by sequencing.

Immunofluorescence staining of the cells

Cells were plated on glass coverslips. For mouse podocytes, coverslips were coated with type I collagen (Sigma-Aldrich, 0.1 mg/ml, 1 h at 37°C). Cells were serum-starved overnight before the

experiments, fixed in 4% paraformaldehyde, permeabilised in 0.1% Triton X-100 in phosphate buffered saline (PBS), and blocked in 3% bovine serum albumin (BSA) in PBS. Immunofluorescent detection of RhoGDI α protein was performed using RhoGDI α antibody (1 : 100) and Alexa Fluor 488 anti-rabbit IgG (1 : 500). DAPI (4', 6-diamidino-2-phenylindole) was used at 0.06 μ g/ml. Photographs were taken at 630 \times magnification using a Zeiss LSM 780 confocal microscope.

Rho-GTPase pull-down assay

The pull-down assay was performed as described previously using the rhotekin Rho-binding domain fused to GST (glutathione S-transferase) (GST-RBD) for RhoA and the Cdc42/Rac interactive binding domain fused to GST (GST-CRIB) for Rac1 and Cdc42.¹⁵ These fusion proteins bind specifically to the active (GTP bound), but not the inactive (GDP bound) form of Rho-GTPases, thus the assay is used to quantify the active form of Rho-GTPases.

Wound healing assay

The wound healing assay was performed under non-proliferative conditions as described previously.¹⁶ Briefly, cells were serum-starved (0.5% FBS) overnight before the experiment. Fibroblasts and mouse podocytes do not proliferate under these conditions (not shown). A scratch was created in a confluent monolayer of cells using a sterile 10 μ l pipette tip. Loosely adherent cells were washed away by two vigorous washes with PBS. The cells were transferred to culture medium and photographs were taken at various time points. The percentage of wound closure was measured in four different areas, averaged, and used to quantify cell motility.

RhoGDI α knockdown

shRNAs directed to human RhoGDI α (clone ID TRCN 0000106160, figure 3B(a), clone ID TRCN0000106162-4, figure 3B(b–d)) and control shRNA (Cntl) were obtained from Thermo Scientific (Rockford, Illinois, USA). Lentivirus was packaged in HEK293T cells using a standard protocol. Virus-containing medium was added to the culture medium of mouse podocytes (in permissive conditions) for 16 h and puromycin was added 48 h later. Puromycin-resistant cells were pooled and used for further experiments. The shRNA that showed the most effective knockdown (figure 4B(a)) anneals to the 3' non-coding region of the RhoGDI α mRNA transcript.

Statistics

Data are presented as mean \pm SEM. The t statistic was used to determine significant differences between two groups. One-way analysis of variance was used to determine significant differences among groups. When significant differences were found, individual comparisons were made between groups using the t statistic and by adjusting the significance threshold according to the Bonferroni method.

RESULTS

Mutation in *ARHGDI* leads to congenital nephrotic syndrome

Whole exome sequencing was performed and after filtering out common and non-protein coding variants, 438 rare variants were identified in the proband (see Methods) (figure 2B). Based on parental consanguinity, the mode of inheritance was assumed to be autosomal recessive, thus only candidate genes having homozygous or two or more potentially compound heterozygous variants were considered for further study. Due to the

poor quality of the archived DNA, we were only able to perform partial whole exome sequencing in patient 2 such that the exome coverage was 10 \times . However, this result in combination with manual visualisation of the data was sufficient to exclude most of the candidates, and reduce the list to five genes. Further targeted Sanger sequencing of regions that could not be resolved in the low coverage exome sequencing excluded three additional variants and resulted in a list of two candidate genes: one homozygous variant, *ARHGDI*, and one compound heterozygous variant, *TSGA10*, shared between the proband and her sister. We did not pursue *TSGA10* since one of the alleles (c.G568A) was not predicted to be damaging by PolyPhen2 and SIFT algorithms, and the gene did not appear to explain the renal phenotype. Several lines of evidence clearly pointed to *ARHGDI* as the gene responsible for the observed phenotype. Mice lacking *ARHGDI* develop massive proteinuria and nephrotic syndrome and die from renal failure as adults.^{17–18} Furthermore, mutations in *ARHGDI* were recently identified in two unrelated children with glucocorticoid-resistant nephrotic syndrome.¹⁹

Both sisters harbour a homozygous in-frame deletion of a single amino acid at chr17 : 79826812-79826814 genomic position, corresponding to c.553_555del (p.Asp185del) by HGVS (Human Genome Variation Society) annotation (figure 2B). The in-frame deletion has not been previously detected in our exome database (>500 exomes), dbSNP, 1000 Genome Project or the EVS (Exome Variant Server) databases, and was subsequently confirmed by Sanger sequencing in both sisters (figure 2C). The deletion is predicted to remove one of three consecutive highly conserved aspartic acid residues, D183, 184, or 185 in the protein, Rho GDP dissociation inhibitor α (RhoGDI α). The girls' mother is healthy and was found to be a heterozygous carrier for this deletion. The father's DNA was unavailable for analysis. The deletion was not found in 96 ethnically matched subjects that were sequenced (data not shown).

RhoGDI α is ubiquitously expressed with high levels in the lung, the thymus, the spleen, the small intestine, and the kidney.²⁰ It regulates small GTP binding proteins of the Rho/Rac/Cdc42 family which are critical for the function of the actin cytoskeleton.^{21–22} We therefore embarked on further studies to establish that the c.553_555del in *ARHGDI*, referred to as Δ D185 in the subsequent functional studies, was responsible for congenital nephrotic syndrome in the two sisters.

RhoGDI α is expressed in podocytes in the adult kidney

To determine if RhoGDI α protein was expressed within podocytes, a highly specialised cell that is critical for the function of the glomerular filtration barrier,²³ immunohistochemistry was performed. RhoGDI α protein was strongly expressed in the glomerulus of the adult mouse kidney, where it co-localised with synaptopodin, a specific marker of podocytes²⁴ (figure 3). RhoGDI α protein was also detected in other cell types within the glomerulus, including mesangial cells, as reported previously.²⁵

RhoGDI α Δ D185 leads to loss-of-function

Structural analysis of the RhoGDI α protein indicates that D184 and D185 are located at the interface where RhoGDI α interacts with Rho-GTPases, suggesting that the Δ D185 protein would generate a loss-of-function phenotype.²⁶ DNA constructs encoding the wild-type and the Δ D185 proteins were transiently transfected in HEK293T cells. The wild-type RhoGDI α protein co-immunoprecipitated with the three Rho-GTPases, RhoA, Rac1, and Cdc42, while the mutant failed to do so, supporting

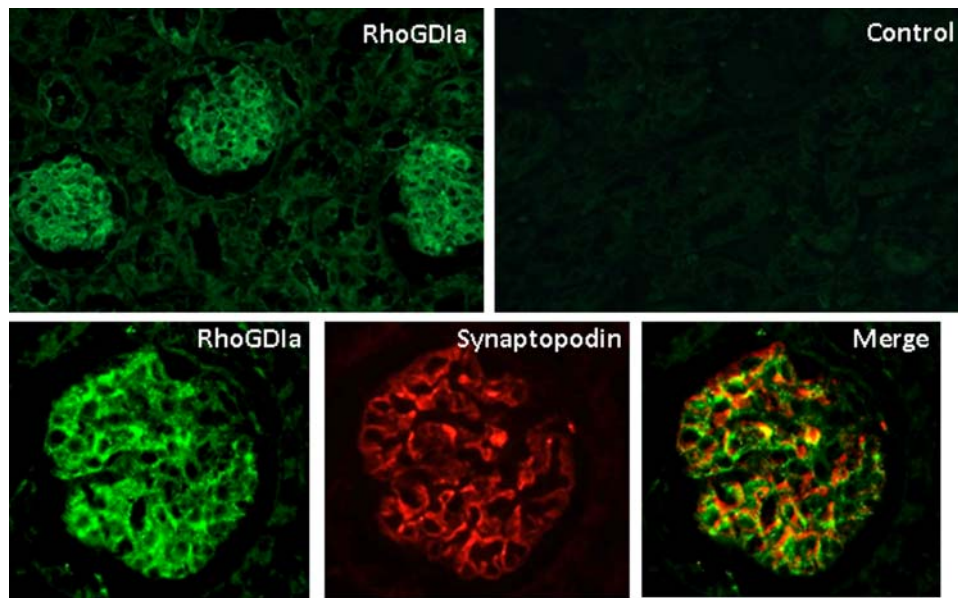


Figure 3 RhoGDI α is expressed in the glomerulus and in podocytes in the adult mouse kidney. Adult mouse kidney sections (methanol fixed and paraffin embedded) were stained for RhoGDI α . Sections processed with the secondary antibody alone reveal no signal (Control). Top panel, magnification 200 \times , bottom panel, magnification 630 \times . RhoGDI α is predominantly expressed in the glomerulus and in all cell types (top). However, RhoGDI α protein (green) co-localises with the podocyte protein, synaptopodin (red) as shown in the merged images (yellow signal), indicating it is expressed in podocytes. This figure is only reproduced in colour in the online version.

the hypothesis that the Δ D185 deletion results in a loss-of-function (figure 4A).

Loss-of-function of RhoGDI α causes hyperactivation of Rho-GTPases and impairs podocyte motility

To determine the effect of the loss-of-function of RhoGDI α in podocytes, we knocked down the endogenous protein in cultured mouse podocytes using shRNA (figure 4B). Podocyte cells with knockdown of RhoGDI α protein demonstrated much higher levels of activated RhoA, Rac1, and Cdc42 as compared to control cells, demonstrating that in the absence of functional RhoGDI α , Rho-GTPases were no longer maintained in their inactive state (figure 4C). A global decrease in the amount of total RhoA, Rac1, and Cdc42 was also noted with the knockdown of RhoGDI α (figure 4C), consistent with a recent report demonstrating that Rho-GTPases undergo rapid proteosomal degradation in the absence of RhoGDIs.²⁷ Altered podocyte cell motility has been shown to correlate with the development of proteinuria.^{28–30} To determine if hyperactivation of RhoA, Rac1, and Cdc42 affected cell motility, wound healing assays were performed. Podocyte cells with knockdown of RhoGDI α demonstrated impaired wound healing when compared with control cells (figure 4D). In summary, a loss-of-function of RhoGDI α results in hyperactivation of RhoA, Rac1, and Cdc42 and leads to impaired podocyte motility, likely via altered actin dynamics.

RhoGDI α Δ D185 leads to hyperactivation of Rho-GTPases and impairs fibroblast cell motility

To evaluate the function of the endogenous wild-type and Δ D185 proteins, we obtained skin fibroblasts from the proband. Fibroblast cell lines from a healthy boy (MCH058) and girl (MCH065) were used as controls. In the proband's fibroblasts, RhoGDI α protein was expressed at a similar level as compared with control cells (figure 5A). Levels of activated RhoA, Rac1, and Cdc42 were notably higher in the proband's fibroblasts as

shown by pull-down assay, when compared with control cells (figure 5A), indicating hyperactivation of all three Rho-GTPases, due to the lack of function of the Δ D185 protein. Immunofluorescent detection of the RhoGDI α protein revealed that it was distributed predominantly in the cytosol in control fibroblasts, consistent with previous reports,^{21 22} whereas in the proband's fibroblasts, the protein was also detected in the nucleus, indicating that the Δ D185 protein was mislocalised (figure 5B and online supplementary figure S1). Similar nuclear mislocalisation was observed when Δ D185 was overexpressed in podocytes (data not shown). Cell motility was quantified using the wound healing assay. Similar to what was observed in podocytes with RhoGDI α knockdown, the proband's fibroblasts migrated more slowly, as compared with control cells (figure 5C). Taken together, the in-frame deletion in *ARHGDI α* observed in the two patients leads to a loss-of-function phenotype characterised by hyperactivation of Rho-GTPases and impaired cell motility.

DISCUSSION

The current study has identified *ARHGDI α* as a new gene implicated in the pathogenesis of autosomal recessive congenital nephrotic syndrome. The mutation leads to a loss-of-function of RhoGDI α , which results in the hyperactivation of Rho-GTPases and impaired cell motility as shown in the proband's fibroblasts and in podocytes when RhoGDI α was knocked-down. Our findings are consistent with the phenotype of RhoGDI α knockout mice that develop heavy proteinuria and progressive kidney failure, leading to death at 1 year of age.¹⁸ Histologically, the glomeruli of these mice show a variable degree of glomerular sclerosis with obliteration of the capillary loops, accumulation of extracellular matrix and podocyte injury manifested as foot process effacement.¹⁸ All of these histological features were also observed in the proband's renal biopsy (figure 1). The mouse model, in combination with our findings in the two patients, demonstrates that RhoGDI α is critical for the function of the

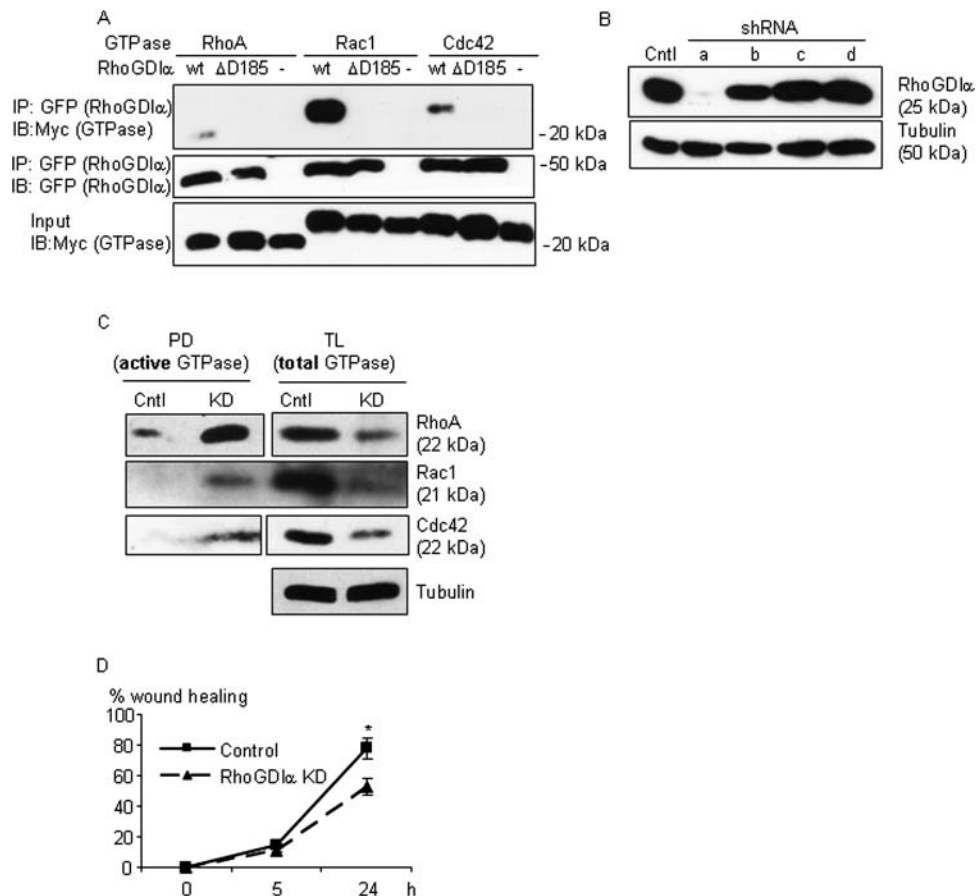


Figure 4 The Δ D185 protein leads to a loss-of-function and RhoGDI α knockdown (KD) leads to hyperactivation of Rho-GTPases and impaired migration of podocytes. (A) HEK293T cells were transfected with DNA constructs encoding the wild-type protein, the Δ D185 RhoGDI α proteins (GFP-tagged), or no construct (-) with Rho-GTPases, RhoA, Rac1, or Cdc42 (Myc-tagged) as indicated. Cell lysates were immunoprecipitated with anti-GFP antibody, and the precipitates and total lysates were immunoblotted for Myc (GTPases) or GFP (RhoGDI α). Wild-type RhoGDI α , but not the Δ D185 protein, co-immunoprecipitated with the three GTPases (representative of three experiments). (B) Immortalised mouse podocytes were transduced with four RhoGDI α shRNAs or control shRNA. Cells were selected with puromycin and pooled, lysed, and immunoblotted for RhoGDI α . One of the four shRNAs tested (a) showed effective KD. (C) Levels of active RhoA, Rac1, and Cdc42 detected by pull-down assay (PD, Methods) were increased, whereas the amounts of total Rho-GTPase proteins were decreased in KD cells. Representative blots of at least three experiments for each GTPase are shown. (D) The wound healing assay showed impaired cell motility of the KD cells. * $p < 0.02$ vs KD, $n = 4$.

glomerular filtration barrier. We propose that loss-of-function of RhoGDI α disturbs the balance of Rho-GTPases within podocytes and this causes derangement of the actin cytoskeleton, podocyte injury, and nephrotic syndrome.

The history of parental consanguinity and the absence of disease in either parent suggests that the disease is being transmitted in an autosomal recessive inheritance pattern. While we cannot completely rule out the possibility that there are parent-of-origin effects like imprinting or sex-limited expression or that the disease is being transmitted via the X chromosome with X inactivation, the recent discovery by Gee *et al*¹⁹ of two unrelated children with homozygous mutations in *ARHGDI* and nephrotic syndrome leads us to believe that the recessive transmission of c.553_555del in *ARHGDI* is the causal gene defect in the two sisters.

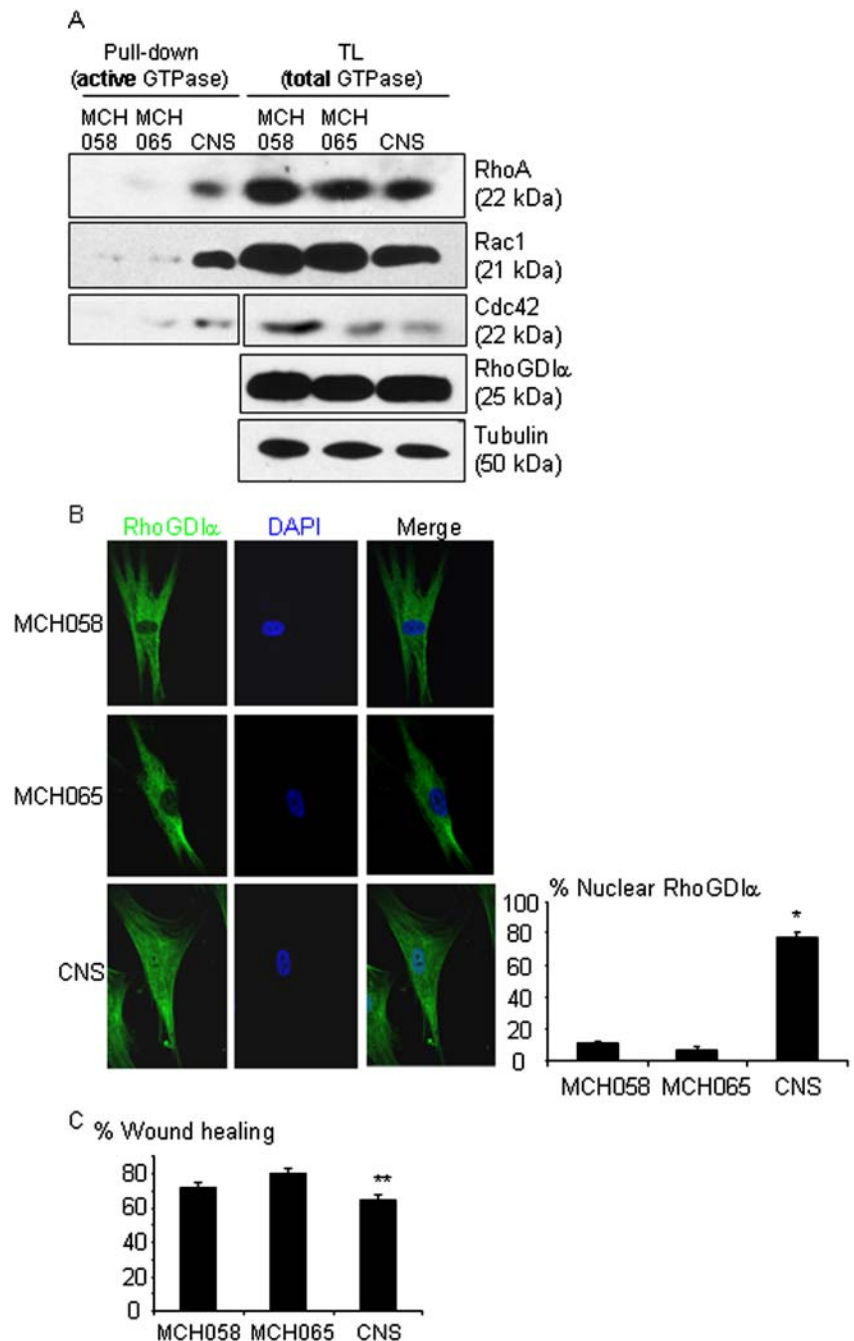
The link between Rho-GTPase dysregulation, podocyte injury and nephrotic syndrome is well established. In mice, inducible expression in podocytes of a constitutively active or a dominant negative RhoA both induced proteinuria,^{31 32} while podocyte specific deletion of Cdc42 caused congenital nephrotic syndrome.³³ The urokinase receptor (suPAR), whose soluble form is a potential candidate for the permeability factor believed to cause idiopathic focal segmental sclerosis (FSGS), induces

actin cytoskeletal derangement via Rac1 and Cdc42 activation.^{34 35} Rac1 activation in podocytes has been implicated in the pathogenesis of HIV associated nephropathy,³⁶ and a loss-of-function mutation of *ARHGAP24* that encodes a Rac-1 GTPase activating protein was recently reported to cause adult onset FSGS, likely via hyperactivation of Rac1 in podocytes.²⁸ It is therefore plausible that Rho-GTPases contribute not only to the pathogenesis of hereditary forms of nephrotic syndrome, but also to other forms including idiopathic minimal change disease and FSGS. Further studies that examine individual Rho-GTPases will be important pursuits to elucidate the relationship between the actin cytoskeleton and podocyte function in these disorders.

Approximately 15% of children with congenital nephrotic syndrome fail to demonstrate protein altering variants in *NPHS1*, *NPHS2*, *WT1*, and *LAMB2*, suggesting that mutations in additional genes need to be considered, such as *ARHGDI*.¹ Although our patients presented with congenital nephrotic syndrome associated with a critical deletion in the interface region where RhoGDI α binds to Rho-GTPases, it is possible that other mutations in this gene might present with later onset forms of nephrotic syndrome as has been reported for *NPHS1*, *NPHS2*, and *LAMB2*.³⁷⁻³⁹

In summary, we have identified *ARHGDI* as a new gene implicated in congenital nephrotic syndrome. Mutations in

Figure 5 The $\Delta D185$ protein leads to a loss-of-function, hyperactivation of Rho-GTPases and impaired migration in fibroblasts from the proband. Control human skin fibroblasts (MCH058 and MCH065) and the proband's skin fibroblasts (CNS) were compared. (A) RhoA, Rac1 and Cdc42 activities detected by pull-down assay were notably increased in the proband's fibroblasts, compared with control cells. (B) Immunostaining of RhoGDI α showed a predominantly cytosolic distribution in control cells and nuclear mislocalisation in the proband's fibroblasts. The graph shows the percentage of cells with nuclear staining of RhoGDI α . Approximately 40 cells were counted in each experiment for each cell line. n=4 experiments, *p<0.01 versus two control cells. (C) The wound healing assay showed impaired cell motility of the proband's fibroblasts. The graph is the average of four independent experiments. **p<0.01 vs MCH065 and p=0.06 vs MCH058. This figure is only reproduced in colour in the online version.



ARHGDI185 are predicted to cause an imbalance in the active and inactive forms of Rho-GTPases leading to derangements in the actin cytoskeleton within podocytes and nephrotic syndrome that may present in the first year of life or later, depending on the biological impact of the mutation. Thus, we believe that genetic screening for *ARHGDI185* mutations should be considered in children with nephrotic syndrome when there is a family history suggesting recessive inheritance.

Author affiliations

¹Department of Pediatrics, Division of Nephrology, McGill University, Montreal, Quebec, Canada

²Research Institute of McGill University Health Centre, Montréal, Québec, Canada

³Department of Human Genetics, McGill University, Montreal, Quebec, Canada

⁴Department of Medicine, Division of Nephrology, McGill University, Montreal, Quebec, Canada

⁵Department of Physiology, McGill University, Montreal, Quebec, Canada

⁶McGill University and Genome Québec Innovation Centre, Montreal, Quebec, Canada

⁷Department of Pathology, Montreal Children's Hospital, McGill University, Montreal, Quebec, Canada

⁸Women's College Research Institute, Women's College Hospital, University of Toronto, Toronto, Ontario, Canada

⁹Faculty of Medicine, Dalla Lana School of Public Health, University of Toronto, Toronto, Ontario, Canada

Acknowledgements We thank the family for agreeing to this study. This work was supported by grants from the Canadian Institute of Health Research (MOP-53335 to TT) and the Montreal Children's Hospital Research Institute (to IRG and MB). We acknowledge the contribution of the high-throughput sequencing platform of the McGill University and Genome Québec Innovation Centre (Montréal, Canada). Exome sequencing for this work was supported by RaDiCAL.⁴⁰ JM is a recipient of a Canada Research Chair. IRG and TT hold scholarship awards from the Fonds de la Recherche en Santé du Québec. The authors thank all of the paediatric nephrologists, the geneticist Dr L Russell, the genetic counsellor Ms R Vanneste, and all nursing staff, especially Ms S Champoux, who were involved in the care of these patients.

Contributors IRG oversaw the study, was involved in conceptual design, drafting and editing the manuscript and is a guarantor of the work; CB generated the data and created the following figures: figure 4–C, and figure 5A; DA generated the data and created the following figures: figure 4D, figure 5B, 5C, and supplementary figure S1; KH analysed the original WES data on the proband and identified a candidate list of homozygous variants; JEA cultured the patient's fibroblasts and generated the data used to create figure 3; SF compared the WES data for the two sisters, analysed the Sanger sequencing performed on the proband, the sister and the mother, and created figure 2; MB recruited the proband, initiated the original genetic analysis for candidate genes, and was involved in manuscript editing; CB analysed the patient's kidney biopsy and created figure 1; MRA performed the sequencing of 96 ethnically matched controls for *ARHGDI2*; SAN oversaw the sequencing and was responsible for recruiting this cohort; DSR was involved in editing the manuscript; JM oversaw the WES analysis, the sequencing, and was involved in conceptual design and in editing the manuscript; TT oversaw the study, was involved in conceptual design, wrote the first draft of the manuscript, and was involved in editing the manuscript and is a guarantor of the work.

Competing interests None.

Ethics approval Research Ethics Board of the Montreal Children's Hospital/McGill University Health Center.

Provenance and peer review Not commissioned; externally peer reviewed.

Open Access This is an Open Access article distributed in accordance with the Creative Commons Attribution Non Commercial (CC BY-NC 3.0) license, which permits others to distribute, remix, adapt, build upon this work non-commercially, and license their derivative works on different terms, provided the original work is properly cited and the use is non-commercial. See: <http://creativecommons.org/licenses/by-nc/3.0/>

REFERENCES

- Hinkes BG, Mucha B, Vlangos CN, Gbadegesin R, Liu J, Hasselbacher K, Hangan D, Ozaltin F, Zenker M, Hildebrandt F. Nephrotic syndrome in the first year of life: two thirds of cases are caused by mutations in 4 genes (NPHS1, NPHS2, WT1, and LAMB2). *Pediatrics* 2007;119:e907–19.
- Hinkes B, Wiggins RC, Gbadegesin R, Vlangos CN, Seelow D, Nurnberg G, Garg P, Verma R, Chaib H, Hoskins BE, Ashraf S, Becker C, Hennies HC, Goyal M, Wharram BL, Schachter AD, Mudumana S, Drummond I, Kerjaschki D, Waldherr R, Dietrich A, Ozaltin F, Bakaloglu A, Cleper R, Basel-Vanagaite L, Pohl M, Griebel M, Tsygin AN, Soylu A, Muller D, Sorli CS, Bunney TD, Katan M, Liu J, Attanasio M, O'Toole JF, Hasselbacher K, Mucha B, Otto EA, Airik R, Kispert A, Kelley GG, Smrcka AV, Gudermann T, Holzman LB, Nurnberg P, Hildebrandt F. Positional cloning uncovers mutations in *PLCE1* responsible for a nephrotic syndrome variant that may be reversible. *Nat Genet* 2006;38:1397–405.
- Gbadegesin R, Hinkes BG, Hoskins BE, Vlangos CN, Heeringa SF, Liu J, Loirat C, Ozaltin F, Hashmi S, Ulmer F, Cleper R, Ettenger R, Antignac C, Wiggins RC, Zenker M, Hildebrandt F. Mutations in *PLCE1* are a major cause of isolated diffuse mesangial sclerosis (IDMS). *Nephrol Dial Transplant* 2008;23:1291–7.
- Jalanko H. Congenital nephrotic syndrome. *Pediatr Nephrol* 2009;24:2121–8.
- Kim JC, Lee NC, Hwu PW, Chien YH, Fahimiya S, Majewski J, Watkins D, Rosenblatt DS. Late onset of symptoms in an atypical patient with the *cbj1* inborn error of vitamin B(12) metabolism: diagnosis and novel mutation revealed by exome sequencing. *Mol Genet Metab* 2012;107:664–8.
- Schwartzentruber J, Korshunov A, Liu XY, Jones DT, Pfaff E, Jacob K, Sturm D, Fontebasso AM, Quang DA, Tonjes M, Hovestadt V, Albrecht S, Kool M, Nantel A, Konermann C, Lindroth A, Jager N, Rausch T, Ryzhova M, Korbel JO, Hielscher T, Hauser P, Garami M, Klekner A, Bogner L, Ebinger M, Schuhmann MU, Scheurle W, Pekrun A, Fruhwald MC, Roggendorf W, Kramm C, Durken M, Atkinson J, Lepage P, Montpetit A, Zakrzewska M, Zakrzewski K, Liberski PP, Dong Z, Siegel P, Kulozik AE, Zapatka M, Guha A, Malkin D, Felsberg J, Reifenberger G, von Deimling A, Ichimura K, Collins VP, Witt H, Milde T, Witt O, Zhang C, Castelo-Branco P, Lichter P, Faury D, Tabori U, Plass C, Majewski J, Pfister SM, Jabado N. Driver mutations in histone H3.3 and chromatin remodelling genes in paediatric glioblastoma. *Nature* 2012;482:226–31.
- Li H, Durbin R. Fast and accurate short read alignment with Burrows-Wheeler transform. *Bioinformatics* 2009;25:1754–60.
- Li H, Handsaker B, Wysoker A, Fennell T, Ruan J, Homer N, Marth G, Abecasis G, Durbin R. The Sequence Alignment/Map format and SAMtools. *Bioinformatics* 2009;25:2078–9.
- Wang K, Li M, Hakonarson H. ANNOVAR: functional annotation of genetic variants from high-throughput sequencing data. *Nucleic Acids Res* 2010;38:e164.
- Adzhubei IA, Schmidt S, Peshkin L, Ramensky VE, Gerasimova A, Bork P, Kondrashov AS, Sunyaev SR. A method and server for predicting damaging missense mutations. *Nat Methods* 2010;7:248–9.
- Kumar P, Henikoff S, Ng PC. Predicting the effects of coding non-synonymous variants on protein function using the SIFT algorithm. *Nat Protoc* 2009;4:1073–81.
- Robinson JT, Thorvaldsdottir H, Winkler W, Guttman M, Lander ES, Getz G, Mesirov JP. Integrative genomics viewer. *Nat Biotechnol* 2011;29:24–6.
- Villegas J, McPhaul M. Establishment and culture of human skin fibroblasts. *Curr Protoc Mol Biol* 2005;Chapter 28:Unit 28.3.
- Shankland SJ, Pippin JW, Reiser J, Mundel P. Podocytes in culture: past, present, and future. *Kidney Int* 2007;72:26–36.
- Zhang H, Cybulsky AV, Aoudjit L, Zhu J, Li H, Lamarche-Vane N, Takano T. Role of Rho-GTPases in complement-mediated glomerular epithelial cell injury. *Am J Physiol* 2007;293:F148–56.
- Ma H, Togawa A, Soda K, Zhang J, Lee S, Ma M, Yu Z, Ardito T, Czyzyk J, Diggs L, Joly D, Hatakeyama S, Kawahara E, Holzman L, Guan JL, Ishibe S. Inhibition of podocyte FAK protects against proteinuria and foot process effacement. *J Am Soc Nephrol* 2010;21:1145–56.
- Shibata S, Nagase M, Yoshida S, Kawarazaki W, Kurihara H, Tanaka H, Miyoshi J, Takai Y, Fujita T. Modification of mineralocorticoid receptor function by Rac1 GTPase: implication in proteinuric kidney disease. *Nat Med* 2008;14:1370–6.
- Togawa A, Miyoshi J, Ishizaki H, Tanaka M, Takakura A, Nishioka H, Yoshida H, Doi T, Mizoguchi A, Matsuura N, Niho Y, Nishimune Y, Nishikawa S, Takai Y. Progressive impairment of kidneys and reproductive organs in mice lacking Rho GDIalpha. *Oncogene* 1999;18:5373–80.
- Gee HY, Ashraf S, Saisawat P, Hurd TW, Vega-Warner V, Fang H, Weber LT, Hoefele J, Beck BB, Antignac C, Hildebrandt F. The novel nephrotic syndrome-causing gene products, *ARHGDI2* and *KANK2* interact with and regulate Rho family small GTPases in podocytes (abstract). *Kidney Week* 2012;FR:PO663.
- Fukumoto Y, Kaibuchi K, Hori Y, Fujioka H, Araki S, Ueda T, Kikuchi A, Takai Y. Molecular cloning and characterization of a novel type of regulatory protein (GDI) for the rho proteins, ras p21-like small GTP-binding proteins. *Oncogene* 1990;5:1321–8.
- DerMardirossian C, Bokoch GM. GDIs: central regulatory molecules in Rho GTPase activation. *Trends Cell Biol* 2005;15:356–63.
- Garcia-Mata R, Boulter E, Burrige K. The 'invisible hand': regulation of RHO GTPases by RHOGDIs. *Nat Rev Mol Cell Biol* 2011;12:493–504.
- Ly J, Alexander M, Quaggin SE. A podocentric view of nephrology. *Curr Opin Nephrol Hypertens* 2004;13:299–305.
- Asanuma K, Yanagida-Asanuma E, Faul C, Tomino Y, Kim K, Mundel P. Synaptopodin orchestrates actin organization and cell motility via regulation of RhoA signalling. *Nat Cell Biol* 2006;8:485–91.
- Bielek H, Anselmo A, Dermardirossian C. Morphological and proliferative abnormalities in renal mesangial cells lacking RhoGDI. *Cell Signal* 2009;21:1974–83.
- Hoffman GR, Nassar N, Cerione RA. Structure of the Rho family GTP-binding protein Cdc42 in complex with the multifunctional regulator RhoGDI. *Cell* 2000;100:345–56.
- Boulter E, Garcia-Mata R, Guilluy C, Dubash A, Rossi G, Brenwald PJ, Burrige K. Regulation of Rho GTPase crosstalk, degradation and activity by RhoGDI1. *Nat Cell Biol* 2010;12:477–83.
- Akilesh S, Suleiman H, Yu H, Stander MC, Lavin P, Gbadegesin R, Antignac C, Pollak M, Kopp JB, Winn MP, Shaw AS. *Arhgap24* inactivates Rac1 in mouse podocytes, and a mutant form is associated with familial focal segmental glomerulosclerosis. *J Clin Invest* 2011;121:4127–37.
- Mele C, Iatropoulos P, Donadelli R, Calabria A, Maranta R, Cassis P, Buelli S, Tomasoni S, Piras R, Krendel M, Bettoni S, Morigi M, Delledonne M, Pecoraro C, Abbate I, Capobianchi MR, Hildebrandt F, Otto E, Schaefer F, Macciardi F, Ozaltin F, Emre S, Ibsirlioglu T, Benigni A, Remuzzi G, Noris M. MYO1E mutations and childhood familial focal segmental glomerulosclerosis. *N Engl J Med* 2011;365:295–306.
- Reiser J, Oh J, Shirato I, Asanuma K, Hug A, Mundel TM, Honey K, Ishidoh K, Kominami E, Kreidberg JA, Tomino Y, Mundel P. Podocyte migration during nephrotic syndrome requires a coordinated interplay between cathepsin L and $\alpha 3$ integrin. *J Biol Chem* 2004;279:34827–32.
- Wang L, Ellis MJ, Gomez JA, Eisner W, Fennell W, Howell DN, Ruiz P, Fields TA, Spurney RF. Mechanisms of the proteinuria induced by Rho GTPases. *Kidney Int* 2012;81:1075–85.
- Zhu L, Jiang R, Aoudjit L, Jones N, Takano T. Activation of RhoA in podocytes induces focal segmental glomerulosclerosis. *J Am Soc Nephrol* 2011;22:1621–30.
- Scott RP, Hawley SP, Ruston J, Du J, Brakebusch C, Jones N, Pawson T. Podocyte-specific loss of *cdc42* leads to congenital nephropathy. *J Am Soc Nephrol* 2012;23:1149–54.
- Wei C, El Hindi S, Li J, Fornoni A, Goes N, Sageshima J, Maiguel D, Karumanchi SA, Yap HK, Saleem M, Zhang Q, Nikolic B, Chaudhuri A, Daftarian P, Salido E, Torres A, Salifu M, Sarwal MM, Schaefer F, Morath C, Schwenger V, Zeier M, Gupta V, Roth D, Rastaldi MP, Burke G, Ruiz P, Reiser J. Circulating urokinase receptor as a cause of focal segmental glomerulosclerosis. *Nat Med* 2011;17:952–60.
- Wei C, Moller CC, Altintas MM, Li J, Schwarz K, Zaccagna S, Xie L, Henger A, Schmid H, Rastaldi MP, Cowan P, Kretzler M, Parrilla R, Bendayan M, Gupta V, Nikolic B, Kalluri R, Carmeliet P, Mundel P, Reiser J. Modification of kidney barrier function by the urokinase receptor. *Nat Med* 2008;14:55–63.

- 36 Lu TC, He JC, Wang ZH, Feng X, Fukumi-Tominaga T, Chen N, Xu J, Iyengar R, Klotman PE. HIV-1 Nef disrupts the podocyte actin cytoskeleton by interacting with diaphanous interacting protein. *J Biol Chem* 2008;283:8173–82.
- 37 Hildebrandt F, Heeringa SF. Specific podocin mutations determine age of onset of nephrotic syndrome all the way into adult life. *Kidney Int* 2009;75:669–71.
- 38 Santin S, Garcia-Maset R, Ruiz P, Gimenez I, Zamora I, Pena A, Madrid A, Camacho JA, Fraga G, Sanchez-Moreno A, Cobo MA, Bernis C, Ortiz A, de Pablos AL, Pintos G, Justa ML, Hidalgo-Barquero E, Fernandez-Llama P, Ballarin J, Ars E, Torra R. Nephtrin mutations cause childhood- and adult-onset focal segmental glomerulosclerosis. *Kidney Int* 2009;76:1268–76.
- 39 Matejas V, Hinkes B, Alkandari F, Al-Gazali L, Annestad E, Aytac MB, Barrow M, Blahova K, Bockenhauer D, Cheong HI, Maruniak-Chudek I, Cochat P, Dotsch J, Gajjar P, Hennekam RC, Janssen F, Kagan M, Kariminejad A, Kemper MJ, Koenig J, Kogan J, Kroes HY, Kuwertz-Broking E, Lewanda AF, Medeira A, Muscheites J, Niaudet P, Pierson M, Saggat A, Seaver L, Suri M, Tsygin A, Wuhl E, Zurowska A, Uebe S, Hildebrandt F, Antignac C, Zenker M. Mutations in the human laminin beta2 (LAMB2) gene and the associated phenotypic spectrum. *Hum Mutat* 2010;31:992–1002.
- 40 Rosenblatt DS. A RaDiCAL approach to gene discovery. *J Med Genet* 2011;48:577–8.