

## Contents

### Reviews

- 1** Non-heritable genetics of human disease: spotlight on post-zygotic genetic variation acquired during lifetime *L A Forsberg, D Absher, J P Dumanski*
- 11** Human diseases versus mouse models: insights into the regulation of genomic imprinting at the human 11p15/mouse distal chromosome 7 region *M E Shmela, C F Gicquel*

### Genotype-phenotype correlations

- 21** Osteogenesis imperfecta type V: marked phenotypic variability despite the presence of the *IFITM5* c.-14C>T mutation in all patients *F Rauch, P Moffat, M Cheung, P Roughley, L Lalic, A M Lund, N Ramirez, S Fahiminiya, J Majewski, F H Glorieux*

### Complex traits

- 25** Identification of a functional variant in the *KIF5A-CYP27B1-METTL1-FAM119B* locus associated with multiple sclerosis *A Alcina, M Fedetz, Ó Fernández, A Saiz, G Izquierdo, M Lucas, L Leyva, J-A García-León, M del Mar Abad-Grau, I Alloza, A Antigüedad, M J García-Barcina, K Vandenbroeck, J Varadé, B de la Hera, R Arroyo, M Comabella, X Montalban, N Petit-Marty, A Navarro, D Otaegui, J Olascoaga, Y Blanco, E Urcelay, F Matesanz*
- 34** *IL12B* SNPs and copy number variation in *IL23R* gene associated with susceptibility to leprosy *S Ali, A K Srivastava, R Chopra, S Aggarwal, V K Garg, S N Bhattacharya, R N K Bamezai*

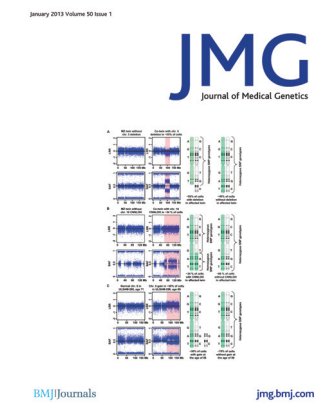
- 43** An Italian association study and meta-analysis with previous GWAS confirm *WNT4*, *CDKN2BAS* and *FN1* as the first identified susceptibility loci for endometriosis *L Pagliardini, D Gentilini, P Vignolo, P Panina-Bordignon, M Busacca, M Candiani, A M Di Blasio*

### New disease loci

- 47** Whole exome sequencing identified a novel zinc-finger gene *ZNF141* associated with autosomal recessive postaxial polydactyly type A *U-e- Kalsoom, E Klopocki, N Wasif, M Tariq, S Khan, J Hecht, P Krawitz, S Mundlos, W Ahmad*
- 54** Mutation in *MPDZ* causes severe congenital hydrocephalus *M S Al-Dosari, M Al-Owain, M Tulbah, W Kurdi, N Adly, A Al-Hemidan, T A Masoodi, B Albash, F S Alkuraya*

### Screening

- 59** Pancreatic cancer risk in Peutz-Jeghers syndrome patients: a large cohort study and implications for surveillance *S E Korse, F Harinck, M G F van Lier, K Biermann, G J A Offerhaus, N Krak, C W N Looman, W van Veelen, E J Kuipers, A Wagner, E Dekker, E M H Mathus-Vliegen, P Fockens, M E van Leerdam, M J Bruno*



Cover credit: Mosaic copy-number variants, indicating post-zygotic events in Forsberg *et al*; in this issue pg 2.

Receive regular table of contents by email. Register using this QR code.



This article has been chosen by the Editor to be of special interest or importance and is freely available online.



This article has been made freely available online under the BMJ Journals Open Access scheme. See <http://jmg.bmj.com/site/about/guidelines.xhtml#open>

C O P E COMMITTEE ON PUBLICATION ETHICS

This journal is a member of and subscribes to the principles of the Committee on Publication Ethics  
[www.publicationethics.org.uk](http://www.publicationethics.org.uk)

equator network

recycle  
When you have finished with this please recycle it