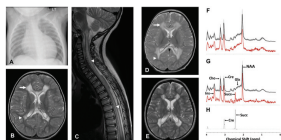


September 2012 Volume 49 Issue 9

JMG
Journal of Medical Genetics



BMJ Journals

jmg.bmj.com

Cover credit: Imaging and magnetic resonance spectrometry in a novel mitochondrial disorder, Taylor *et al*, in this issue (page 569).

Contents

Chromosomal rearrangements

- 547** Clinical significance of copy number variations in the 11p15.5 imprinting control regions: new cases and review of the literature *M Begemann, S Spengler, M Gogiel, U Grasshoff, M Bonin, R C Betz, A Dufee, I Spier, T Eggemann*

Complex traits

- 554** Gene expression as a quantitative trait: what about translation? *C Polychronakos*
- 558** Closing the case of *APOE* in multiple sclerosis: no association with disease risk in over 29 000 subjects *C M Lill, T Liu, B-M M Schjeide, J T Roehr, D A Akkad, V Damotte, A Alcina, M A Ortiz, R Arroyo, A L de Lapuente, P Blaschke, A Winkelmann, L-A Gerdes, F Luessi, O Fernandez, G Izquierdo, A Antigüedad, S Hoffjan, I Courmu-Rebeix, S Gromöller, H Faber, M Liebsch, E Meissner, C Chanvillard, E Touze, F Pico, P Corcia, ANZgene Consortium, T Dörner, E Steinhagen-Thiessen, L Baeckman, H R Heekeren, S-C Li, U Lindenberger, A Chan, H-P Hartung, O Aktas, P Lohse, T Kümpfel, C Kubisch, J T Epplen, U K Zettl, B Fontaine, K Vandenbroecke, F Maesanz, E Urcelay, L Bertram, F Zipp*

New disease loci

- 563** Exome sequencing identifies a *COL14A1* mutation in a large Chinese pedigree with punctate palmoplantar keratoderma *B-R Guo, X Zhang, G Chen, J-G Zhang, L-D Sun, W-d Du, Q Zhang, Y Cui, J Zhu, X-F Tang, R Xiao, Y Liu, M Li, H-Y Tang, X Yang, H Cheng, M Li, M Gao, P Li, J-B Wang, F-P Xu, X-B Zuo, X-D Zheng, X-G Zhang, L Yang, J-J Liu, J Wang, S Yang, X-J Zhang*

Genotype-phenotype correlations

- 569** Recessive germline *SDHA* and *SDHB* mutations causing leukodystrophy and isolated mitochondrial complex II deficiency *C L Alston, J E Davison, F Meloni, F H van der Westhuizen, L He, H-T Hornig-Do, A C Peet, P Gissen, P Goffrini, I Ferrero, E Wassmer, R McFarland, R W Taylor*

September 2012 Volume 49 Issue 9

Mitochondrial genetics

- 578** Complex I deficiency: clinical features, biochemistry and molecular genetics *E Fassone, S Rahman*

Therapeutics

- 591** Miglustat as a therapeutic agent: prospects and caveats *R E Venier, S A Igdowna*

Copy-number variation

- 598** Deletion of the 3q26 region including the *EV11* and *MDS1* genes in a neonate with congenital thrombocytopenia and subsequent aplastic anaemia *M Nielsen, C L Vermont, E Aten, C A L Ruivenkamp, F van Herrewegen, G W E Santen, M H Breuning*

Cancer genetics

- 601** Prediction of breast cancer risk by genetic risk factors, overall and by hormone receptor status *A Hüsing, F Canzian, L Beckmann, M Garcia-Closas, W R Diver, M J Thun, C D Berg, R N Hoover, R G Ziegler, J D Figueroa, C Isaacs, A Olsen, V Viallon, H Boeing, G Masala, D Trichopoulos, P H M Peeters, E Lund, E Ardanaz, K-T Khaw, P Lenner, L N Kolonel, D O Stram, L L Marchand, C A McCarty, J E Buring, I-M Lee, S Zhang, S Lindström, S E Hankinson, E Riboli, D J Hunter, B E Henderson, S J Chanock, C A Haiman, P Kraft, R Kaaks, on behalf of the BPC3*

Miscellaneous

- 597** Correction

This article has been chosen by the Editor to be of special interest or importance and is freely available online.

Articles carrying the Unlocked Logo are freely available online under the BMJ Journals unlocked scheme.
See <http://jmg.bmj.com/info/unlocked.dt>

C O P E COMMITTEE ON PUBLICATION ETHICS

This journal is a member of and subscribes to the principles of the Committee on Publication Ethics

www.publicationethics.org.uk

equator network

recycle
When you have finished with this please recycle it