

Contents

September 2014 Volume 51 Issue 9

Epigenetics

- 563** Human transgenerational responses to early-life experience: potential impact on development, health and biomedical research *M Pembrey, R Saffery, L O Bygren, Network in Epigenetic Epidemiology*

Cancer genetics

- 573** Long-term prospective clinical follow-up after *BRCA1/2* presymptomatic testing: *BRCA2* risks higher than in adjusted retrospective studies *D G Evans, E Harkness, F Lalloo, A Howell*

Phenotypes

- 581** TRMT10A dysfunction is associated with abnormalities in glucose homeostasis, short stature and microcephaly *D Gillis, A Krishnamohan, B Yaacov, A Shaag, J E Jackman, O Elpeleg*
- 587** Expansion of the clinical phenotype associated with mutations in *activity-dependent neuroprotective protein* *M F Pescosolido, M Schwede, A J Harrison, M Schmidt, E D Gamsiz, W S Chen, J P Donahue, N Shur, B A Jerskey, C Phornphutkul, E M Morrow*
- 590** A novel missense mutation in *CCDC88C* activates the JNK pathway and causes a dominant form of spinocerebellar ataxia *H Tsoi, A C S Yu, Z S Chen, N K N Ng, A Y Y Chan, L Y P Yuen, J M Abrigo, S Y Tsang, S K W Tsui, T M F Tong, I F M Lo, S T S Lam, V C T Mok, L K S Wong, J C K Ngo, K-F Lau, T-F Chan, H Y E Chan*

Genome-wide studies

- 596** Meta-analysis identifies loci affecting levels of the potential osteoarthritis biomarkers sCOMP and uCTX-II with genome wide significance *Y F M Ramos, S Metrustry, N Arden, A C Bay-Jensen, M Beekman, A J M de Craen, L A Cupples, T Esko, E Evangelou, D T Felson, D J Hart, J P A Ioannidis, M Karsdal, M Kloppenburg, F Laféber, A Metspalu, K Panoutsopoulou, P E Slagboom, T D Spector, E W E van Spil, A G Uitterlinden, Y Zhu, arcOGEN consortium, TreatOA collaborators, A M Valdes, J B J van Meurs, I Meulenbelt*

Chromosomal rearrangements

- 605** Neurodevelopmental disorders associated with dosage imbalance of *ZBTB20* correlate with the morbidity spectrum of *ZBTB20* candidate target genes *M B Rasmussen, J V Nielsen, C M Lourenço, J B Melo, C Halgren, C V L Gerald, W Marques Jr, G R Rodrigues, M Thomassen, M Bak, C Hansen, S I Ferreira, M Venâncio, K F Henriksen, A Lind-Thomsen, I M Carreira, N A Jensen, N Tommerup*

Functional genomics

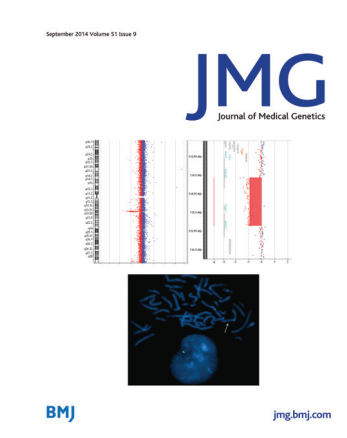
- 614** Genetic architectures of ADME genes in five Eurasian admixed populations and implications for drug safety and efficacy *J Li, H Lou, X Yang, D Lu, S Li, L Jin, X Pan, W Yang, M Song, D Mamatyusup, S Xu*

Genotype-phenotype correlations

- 623** Comprehensive genotype-phenotype correlations between *NLRP7* mutations and the balance between embryonic tissue differentiation and trophoblastic proliferation *N M P Nguyen, L Zhang, R Reddy, C Déry, J Arseneau, A Cheung, U Surti, L Hoffner, M Seoud, G Zaatari, R Bagga, R Srinivasan, P Coullin, A Ao, R Slim*

Miscellaneous

- 613** Correction



Cover credit: Molecular cytogenetics demonstrating Chr3q microdeletion, from Rasmussen *et al.* pg 605.

Receive regular table of contents by email. Register using this QR code.



EDITOR'S CHOICE This article has been chosen by the Editor to be of special interest or importance and is freely available online.

OPEN ACCESS This article has been made freely available online under the BMJ Journals Open Access scheme. See <http://jmg.bmj.com/site/about/guidelines.xhtml#open>

C O P E COMMITTEE ON PUBLICATION ETHICS

This journal is a member of and subscribes to the principles of the Committee on Publication Ethics <http://publicationethics.org/>

equator network

recycle When you have finished with this please recycle it