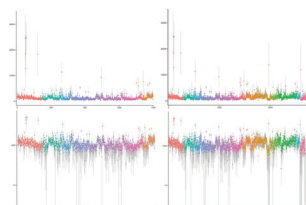


# Journal of Medical Genetics

February 2018 Volume 55 Issue 2

**JMG**  
Journal of Medical Genetics


jmg.bmj.com



BMJ


Cover credit: Coverage profile of different exon panels for diagnostics in inherited retinal disease from Ellingford JM *et al.*, supplementary figure S2.



Adopted as the official Journal of the Canadian College of Medical Geneticists

## Contents

### Neurogenetics

- 73** Genetics of Parkinson's disease and related disorders  
 *P-L Zhang, Y Chen, C-H Zhang, Y-X Wang, P Fernandez-Funez*

### Somatic mosaicism

- 81** Two patients with MIRAGE syndrome lacking haematological features: role of somatic second-site reversion SAMD9 mutations  
*H Shima, K Koehler, Y Nomura, K Sugimoto, A Satoh, T Ogata, M Fukami, R Jühlen, M Schuelke, K Mohriike, A Huebner, S Narumi*


### Clinical guidelines

- 86** Choosing Wisely Canada: The Canadian College of Medical Geneticists' (CCMG) list of five items physicians and patients should question  
*E Goh, A Guerin, J Lazier, S Goobie, T N Nelson, R Agatep, V M Siu, K Y Niederhoffer, J Richer*

### Cancer genetics

- 89** CNVs affecting cancer predisposing genes (CPGs) detected as incidental findings in routine germline diagnostic chromosomal microarray (CMA) testing  
*J Innes, L Reali, J Clayton-Smith, G Hall, D H K Lim, G J Burghel, K French, U Khan, D Walker, F Laloo, D G R Evans, D McMullan, E R Maher, E R Woodward*
- 97** Inherited mutations in *BRCA1* and *BRCA2* in an unselected multiethnic cohort of Asian patients with breast cancer and healthy controls from Malaysia  
*W X Wen, J Allen, K N Lai, S Mariapun, S N Hasan, P S Ng, D Shin-C Lee, S Y Lee, S-Y Yoon, J Lim, S Y Lau, B Decker, K Pooley, L Dorling, C Luccarini, C Baynes, D M Conroy, P Harrington, J Simard, C H Yip, N A Mohd Taib, W K Ho, A C Antoniou, A M Dunning, D F Easton, S H Teo*


### Phenotypes

- 104** PURA syndrome: clinical delineation and genotype-phenotype study in 32 individuals with review of published literature  
 *M R F Reijnders, R Janowski, M Alvi, J E Self, T J van Essen, M Vreeburg, R P W Rouhl,*

## February 2018 Volume 55 Issue 2

*S J C Stevens, A P A Stegmann, J Schieving, R Pfundt, K van Dijk, E Smeets, C T R M Stumpel, L A Bok, J M Cobben, M Engelen, S Mansour, M Whiteford, K E Chandler, S Douzgou, N S Cooper, E-C Tan, R Foo, A H M Lai, J Rankin, A Green, T Lönnqvist, P Isohanni, S Williams, I Ruhoy, K S Carvalho, J J Dowling, D L Lev, K Sterbova, P Lassuthova, J Neupauerová, J L Waugh, S Keros, J Clayton-Smith, S F Smithson, H G Brunner, C van Hoeckel, M Anderson, V E Clowes, V M Siu, T DDD study, P Selber, R J Leventer, C Nellaker, D Niessing, D Hunt, D Baralle*

### Copy-number variation

- 114** Assessment of the incorporation of CNV surveillance into gene panel next-generation sequencing testing for inherited retinal diseases  
 *J M Ellingford, B Horn, C Campbell, G Arno, S Barton, C Tate, S Bhaskar, P I Sergouniotis, R L Taylor, K J Carss, L F L Raymond, M Michaelides, S C Ramsden, A R Webster, G C M Black*

### New disease loci


- 122** Defect in phosphoinositide signalling through a homozygous variant in *PLCB3* causes a new form of spondylometaphyseal dysplasia with corneal dystrophy  
*S Ben-Salem, S M Robbins, N L M Sobreira, A Lyon, A M Al-Shamsi, B K Islam, N A Akawi, A John, P Thachillath, S Al Hamed, D Valle, B R Ali, L Al-Gazali*

### Diagnostics

- 131** Segregation of mitochondrial DNA mutations in the human placenta: implication for prenatal diagnosis of mtDNA disorders  
*P Vachin, E Adda-Herzog, G Chalouhi, C Elie, M Rio, S Rondeau, N Gigarel, F J Hanin, S Monnot, R Borghese, J Bengoa, Y Ville, A Rotig, A Munnich, J-P Bonnefont, J Steffann*

### Genotype-phenotype correlations

- 137** Hypothesis: lobe A (COG1–4)-CDG causes a more severe phenotype than lobe B (COG5–8)-CDG  
*H A Hajjes, J Jaeken, F Foulquier, P M van Hasselt*

 This article has been chosen by the Editor to be of special interest or importance and is freely available online.

EDITOR'S CHOICE

 This article has been made freely available online under the BMJ Journals Open Access scheme. See <http://authors.bmj.com/open-access/>

OPEN ACCESS

**C O P E** This journal is a member of and subscribes to the principles of the Committee on Publication Ethics <http://publicationethics.org/>  
 Member since 2008 JM00012

 equator network

 recycle  
When you have finished with this please recycle it

**MCQs** The online version of this article contains multiple choice questions hosted on BMJ Learning.



**55 (2)**

*J Med Genet* 2018 55: 73-142

---

Updated information and services can be found at:  
<http://jmg.bmj.com/content/55/2>

---

**Email alerting  
service**

*These include:*

Receive free email alerts when new articles cite this article. Sign up in the box at the top right corner of the online article.

---

**Notes**

---

To request permissions go to:  
<http://group.bmj.com/group/rights-licensing/permissions>

To order reprints go to:  
<http://journals.bmj.com/cgi/reprintform>

To subscribe to BMJ go to:  
<http://group.bmj.com/subscribe/>